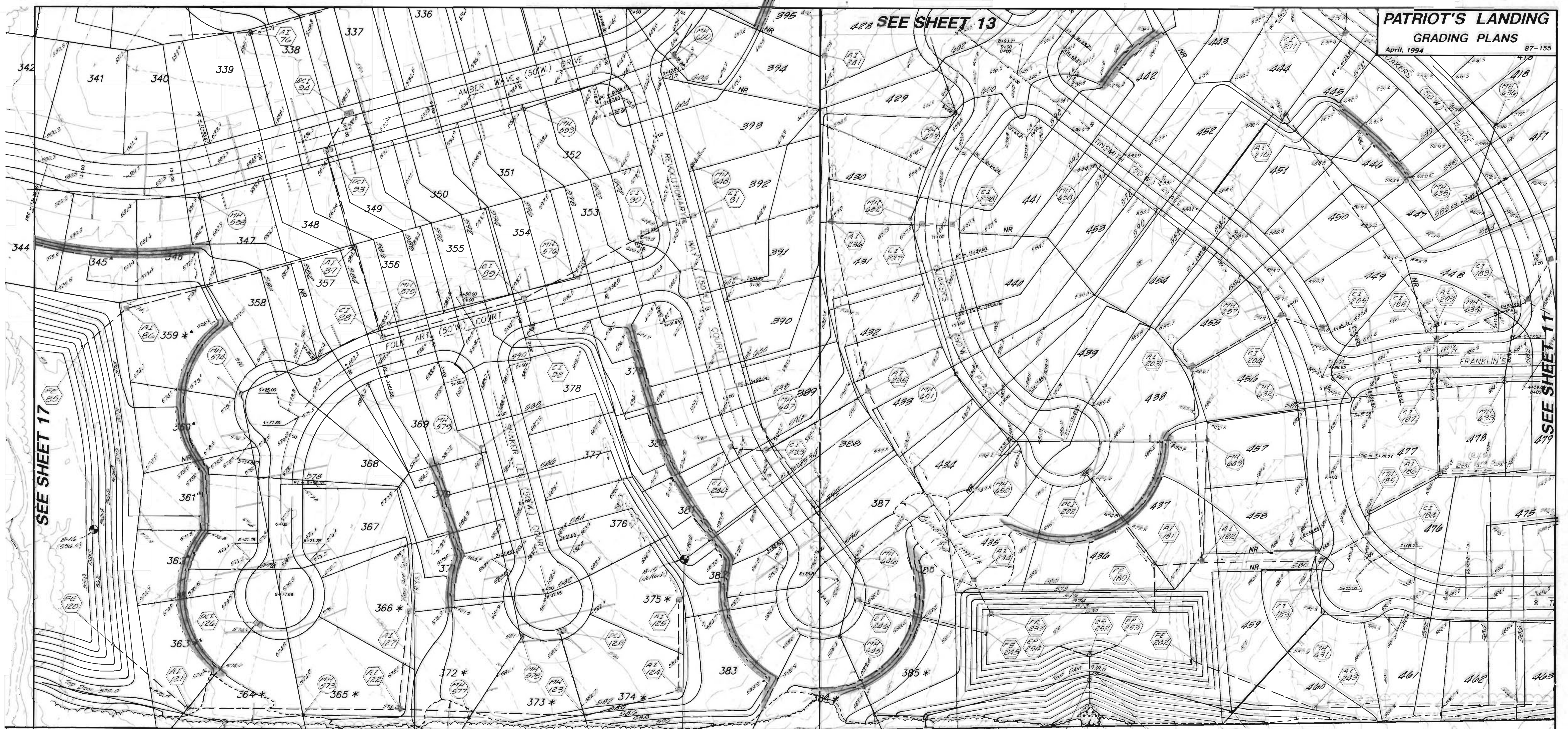


SEE SHEET 13

SEE SHEET 17

SEE SHEET 11



1269.66'(R)(S)

128.93'(R)(S)
 500°58'13"E

500°56'27"E

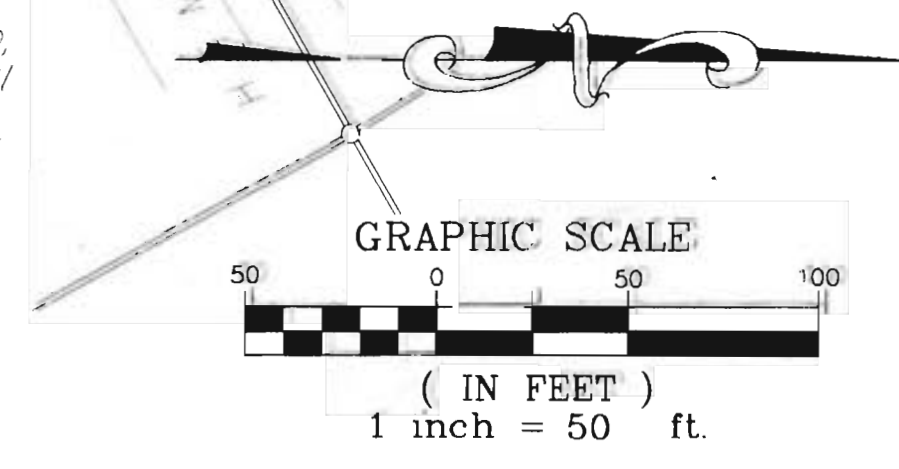
To be removed
 (C.O.)
 (MH 510)

Grading Limits (Typ.)

FAIRVIEW MANOR
 PLAT 7 PB. 22 PG. 30

Grouted Riprap
 or Energy Dissipator
 See detail sheet 51
 (34 to 36 in length)

*Note: Lots 291, 292, 317, 318, 319, 320, 345, 357, 310, 301, 302, & 303, shall maintain a minimum lowest sill elevation of 571.2



NOTE: SEE PREVIOUSLY APPROVED GRADING PLANS FOR SOIL & EROSION CONTROL