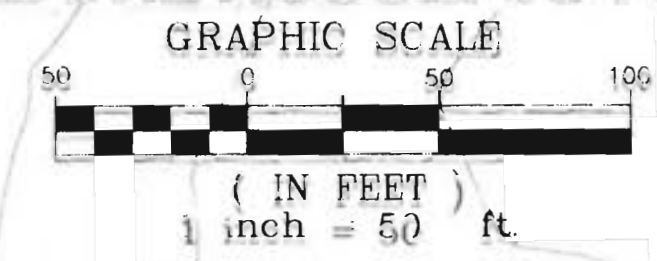
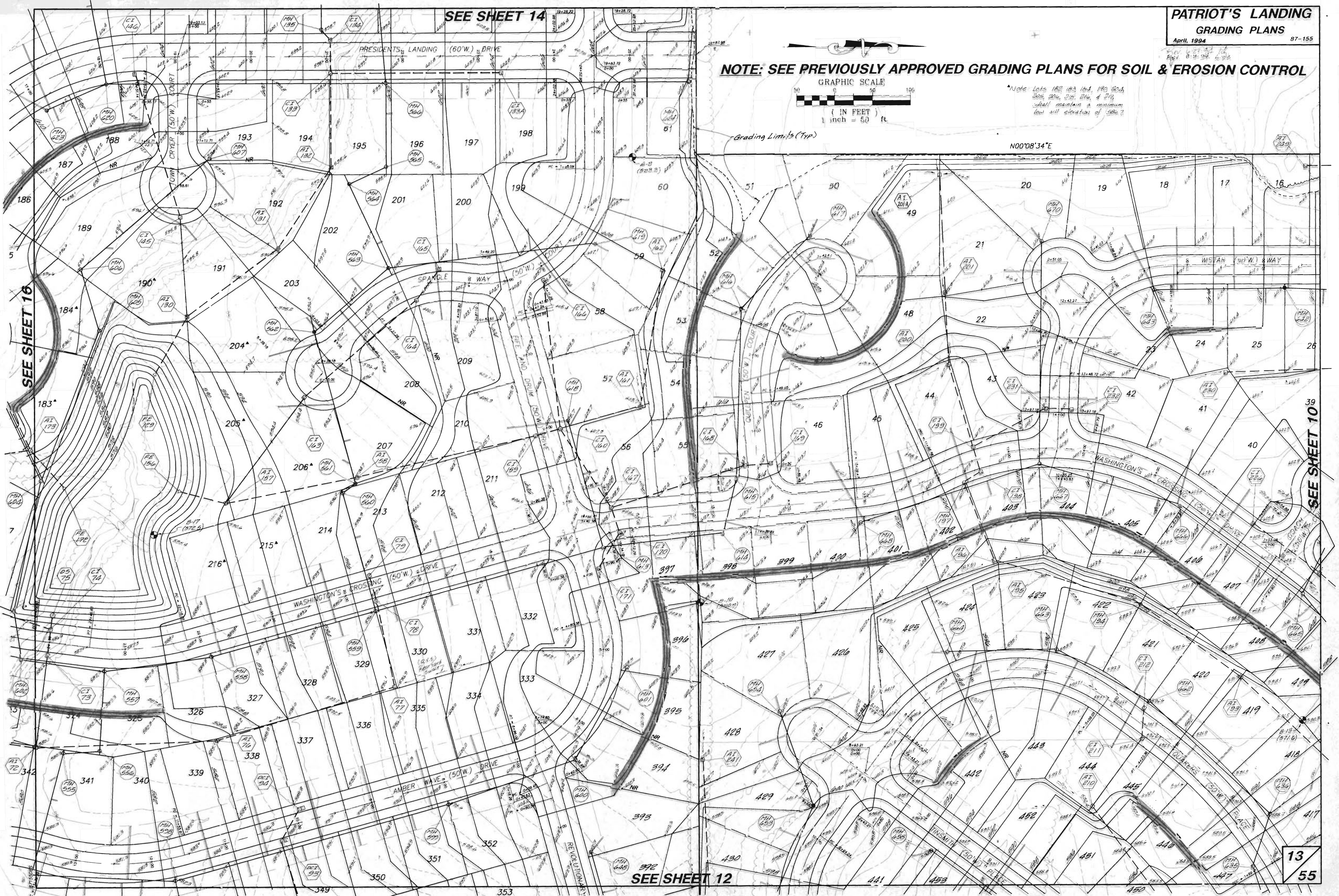


NOTE: SEE PREVIOUSLY APPROVED GRADING PLANS FOR SOIL & EROSION CONTROL



*Note: Lots 182, 183, 184, 193, 203, 205, 206, 215, 216, & 219 shall maintain a minimum low sill elevation of 586.7



SEE SHEET 16

SEE SHEET 14

SEE SHEET 12

SEE SHEET 10