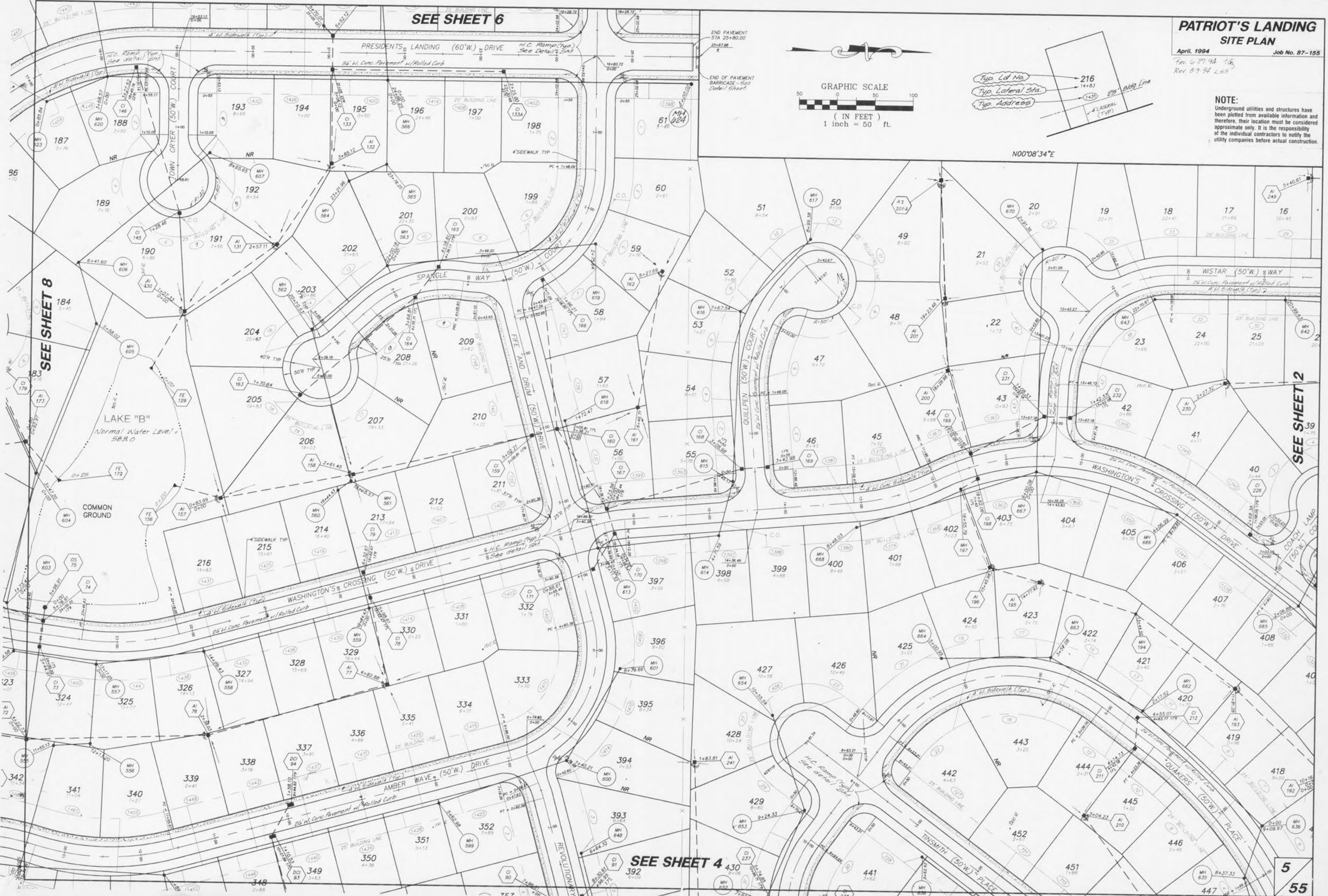
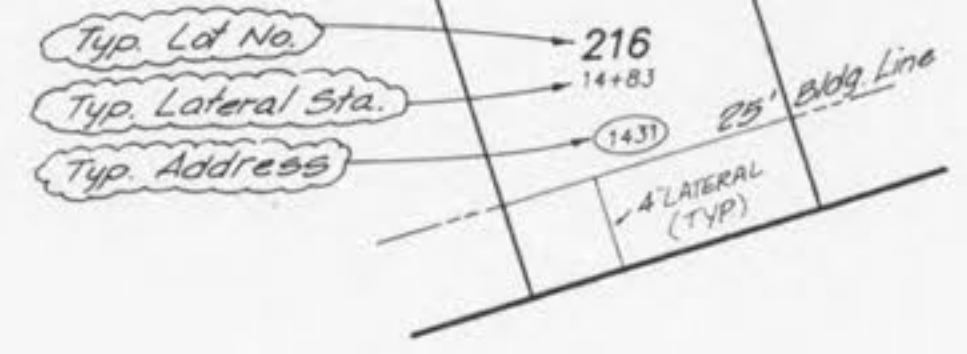
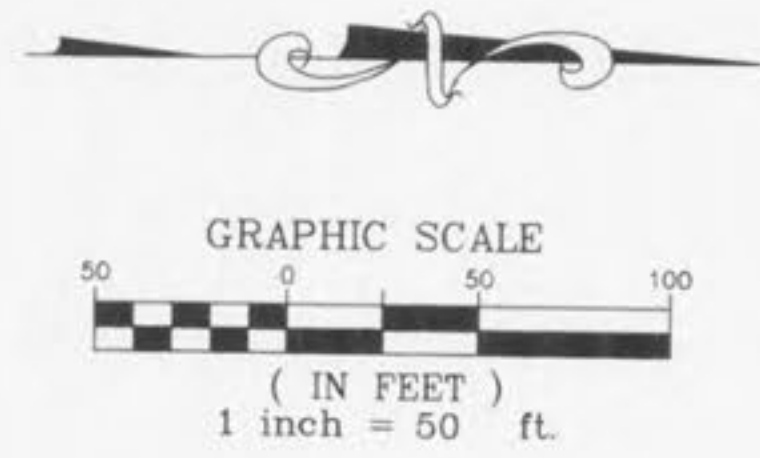


**PATRIOT'S LANDING  
SITE PLAN**

April, 1994 Job No. 87-155

Rev. 6-27-94 1st  
Rev. 8-9-94 2nd

**NOTE:**  
Underground utilities and structures have been plotted from available information and therefore, their location must be considered approximate only. It is the responsibility of the individual contractors to notify the utility companies before actual construction.



SEE SHEET 6

SEE SHEET 8

SEE SHEET 2

SEE SHEET 4

5  
55