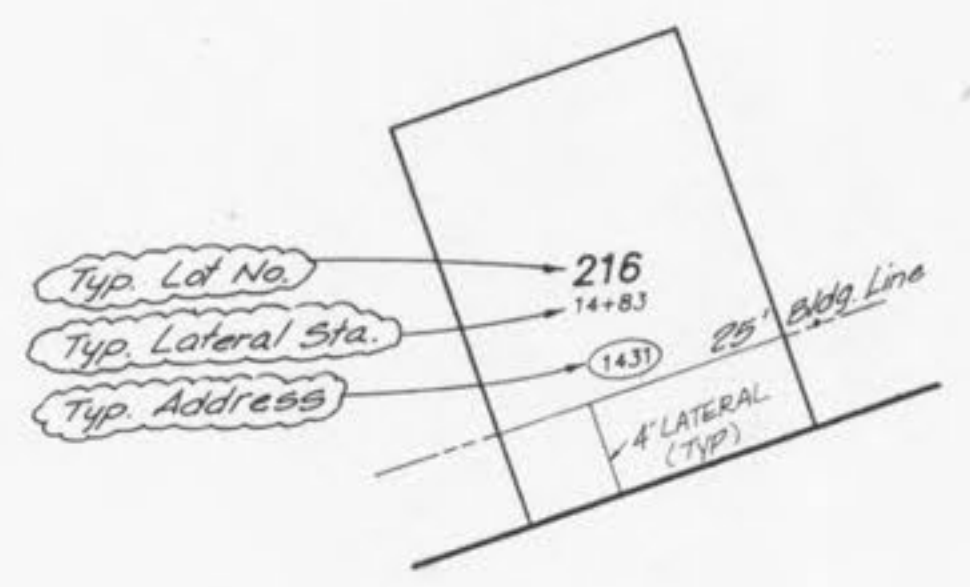
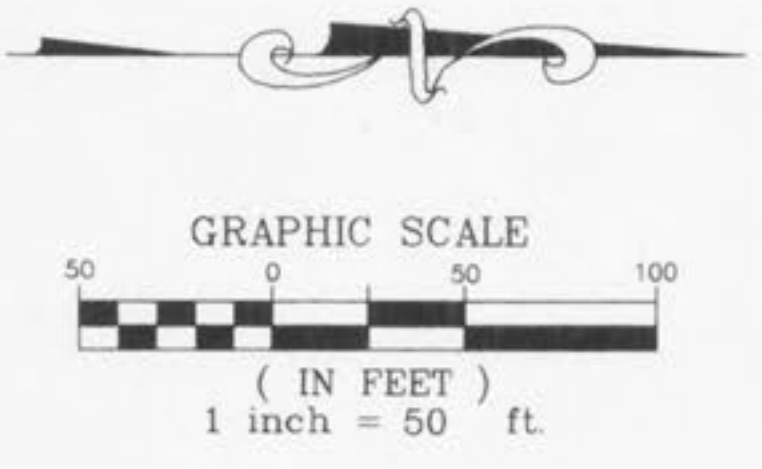
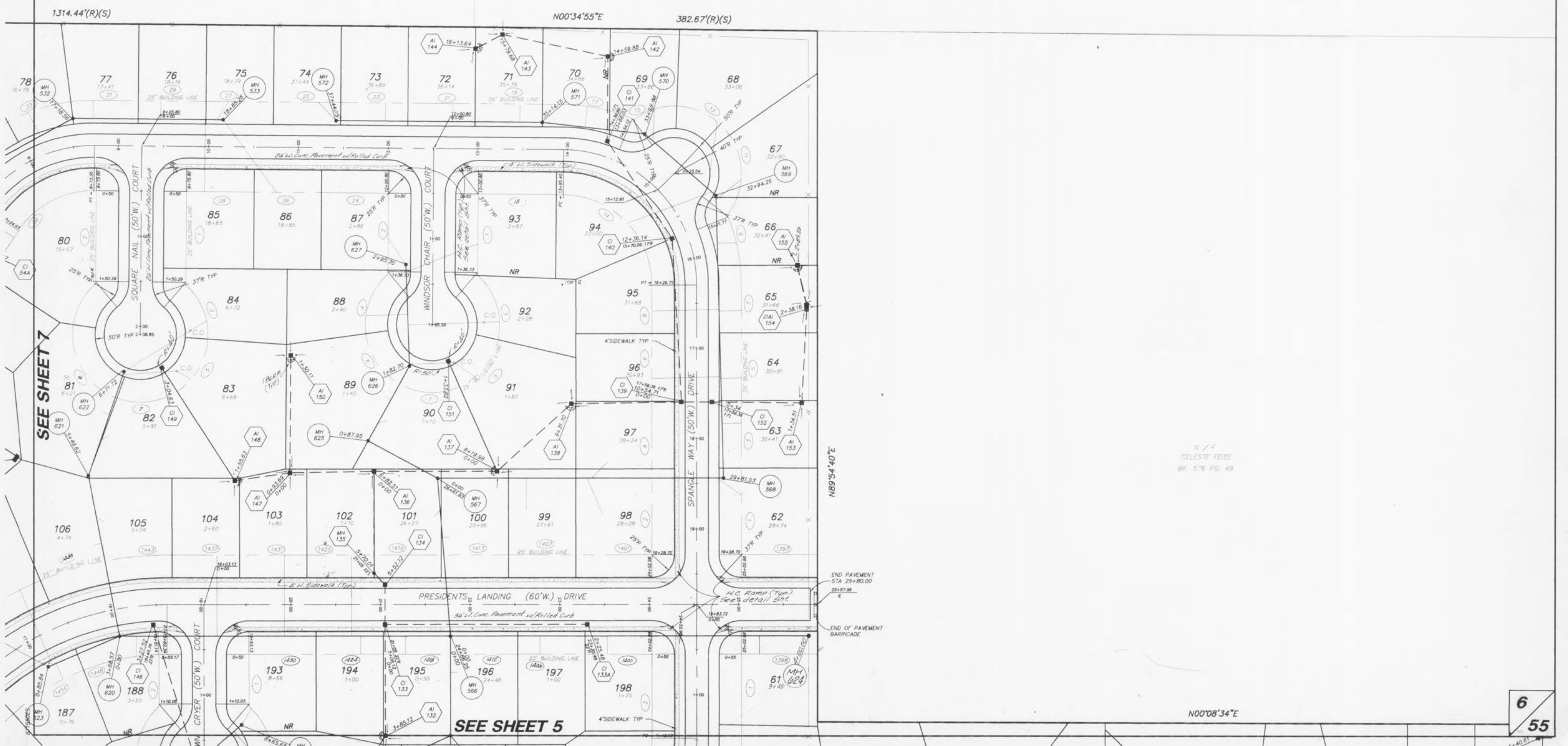


Rev 6-27-94 TCB

NOTE:
 Underground utilities and structures have been plotted from available information and therefore, their location must be considered approximate only. It is the responsibility of the individual contractors to notify the utility companies before actual construction.



N / F
 CELESTE FEISE
 "NO DEED OF RECORD
 PER THE ST. CHARLES
 COUNTY ASSESSORS OFFICE"



SEE SHEET 7

SEE SHEET 5

N / F
 CELESTE FEISE
 BK. 576 PG. 49