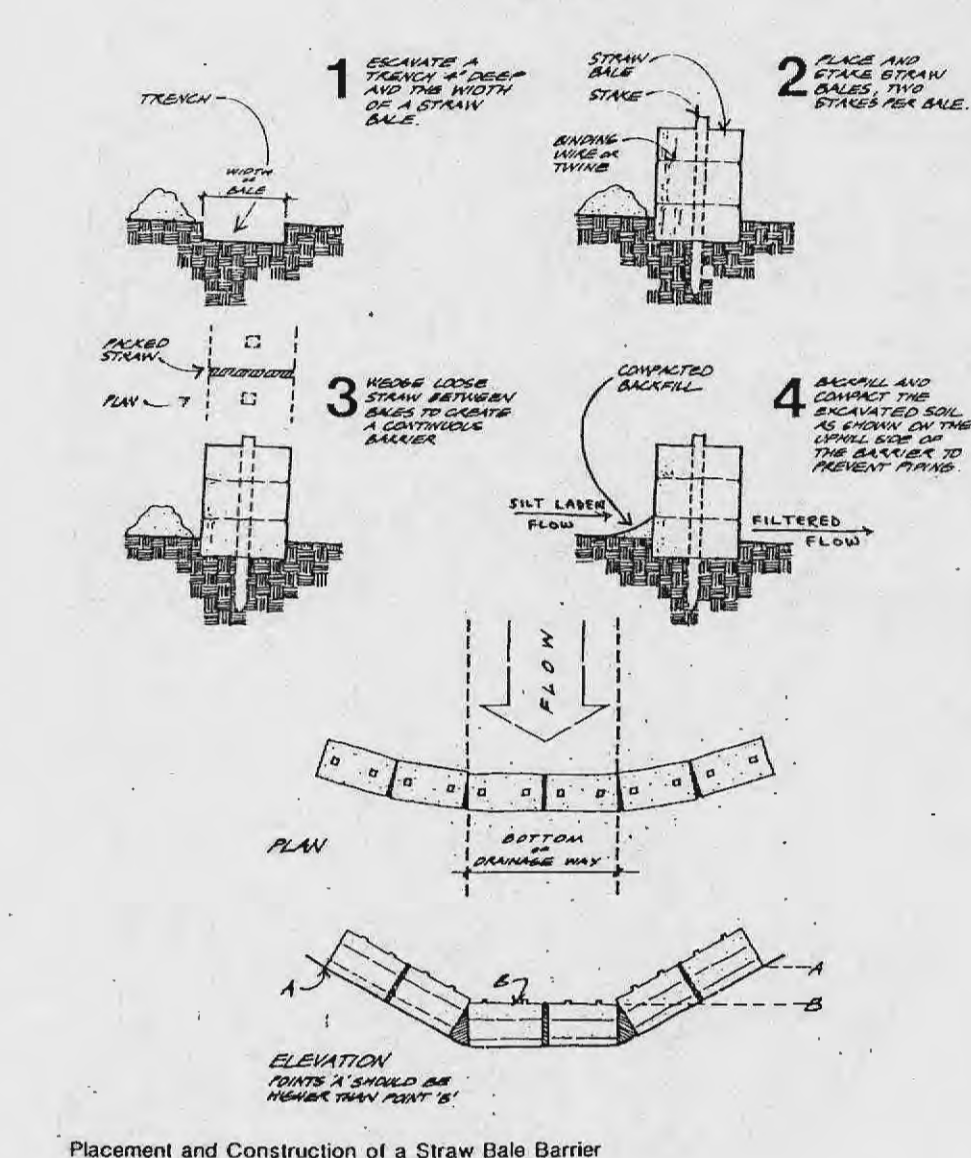
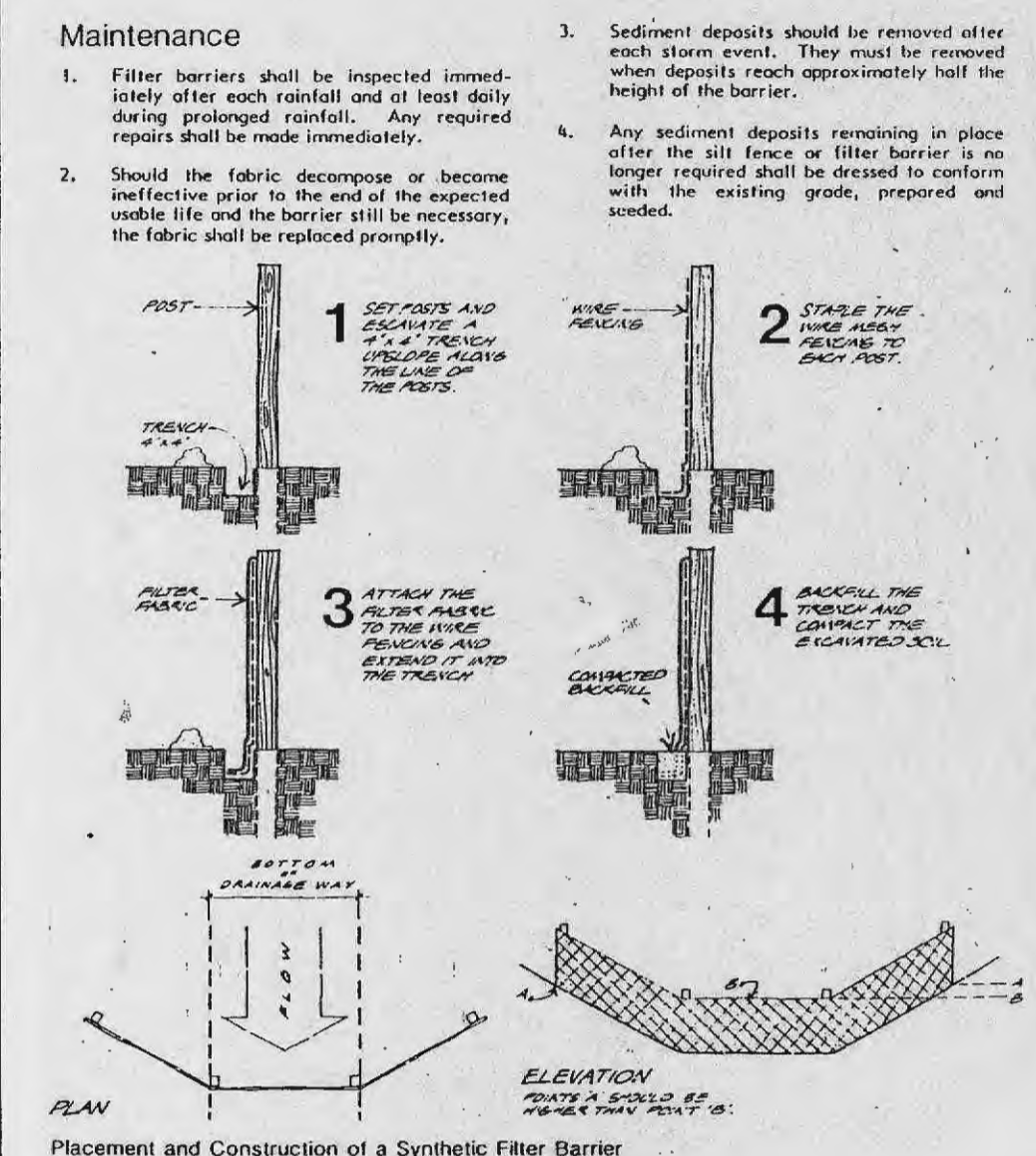


STRAW BALE BARRIERS For Urban Development Sites APPENDIX C



SYNTHETIC FILTER BARRIERS For Urban Development Sites APPENDIX D

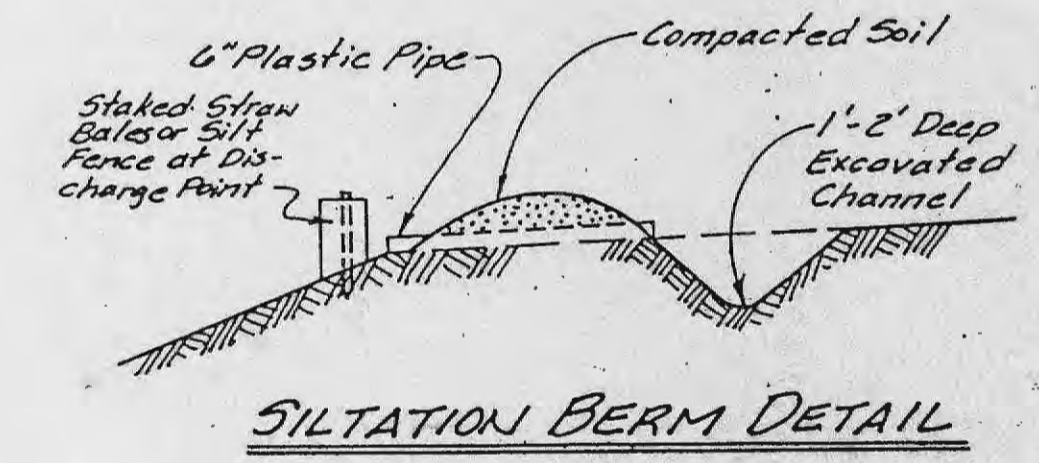


Maintenance
1. Filter barriers shall be inspected immediately after each rainfall and at least daily during prolonged rainfall. Any required repairs shall be made immediately.
2. Should the fabric decompose or become ineffective prior to the end of the expected useful life and the barrier still be necessary, the fabric shall be replaced promptly.

3. Sediment deposits should be removed after each storm event. They must be removed when deposits reach approximately half the height of the barrier.
4. Any sediment deposits remaining in place after the filter barrier is no longer required shall be dressed to conform with the existing grade, prepared and seeded.

Grading by others

Grading Limits (Typ.)



The total yardage for this project is based on a 15% shrinkage factor. This shrinkage factor is subject to change, due to soil conditions, (types and moisture content) weather conditions, and the percent compaction actually achieved. As a result, adjustments in final grades may be required.
Earth quantities obtained from aerial grid map, with contours at two foot intervals, with a tolerance of plus or minus 1 foot, or 1/2 contour interval.
The computed bid yardage is to finish grade and does not include removal of subgrade.