

### VEGETATIVE ESTABLISHMENT FOR URBAN DEVELOPMENT SITES

**APPENDIX A**

**Seeding Rates:**

**Permanent:**  
 Tall Fescue - 30 lbs./ac.  
 Smooth Brome - 20 lbs./ac.  
 Combined: Fescue @ 15 lbs./ac. and Brome @ 10 lbs./ac.

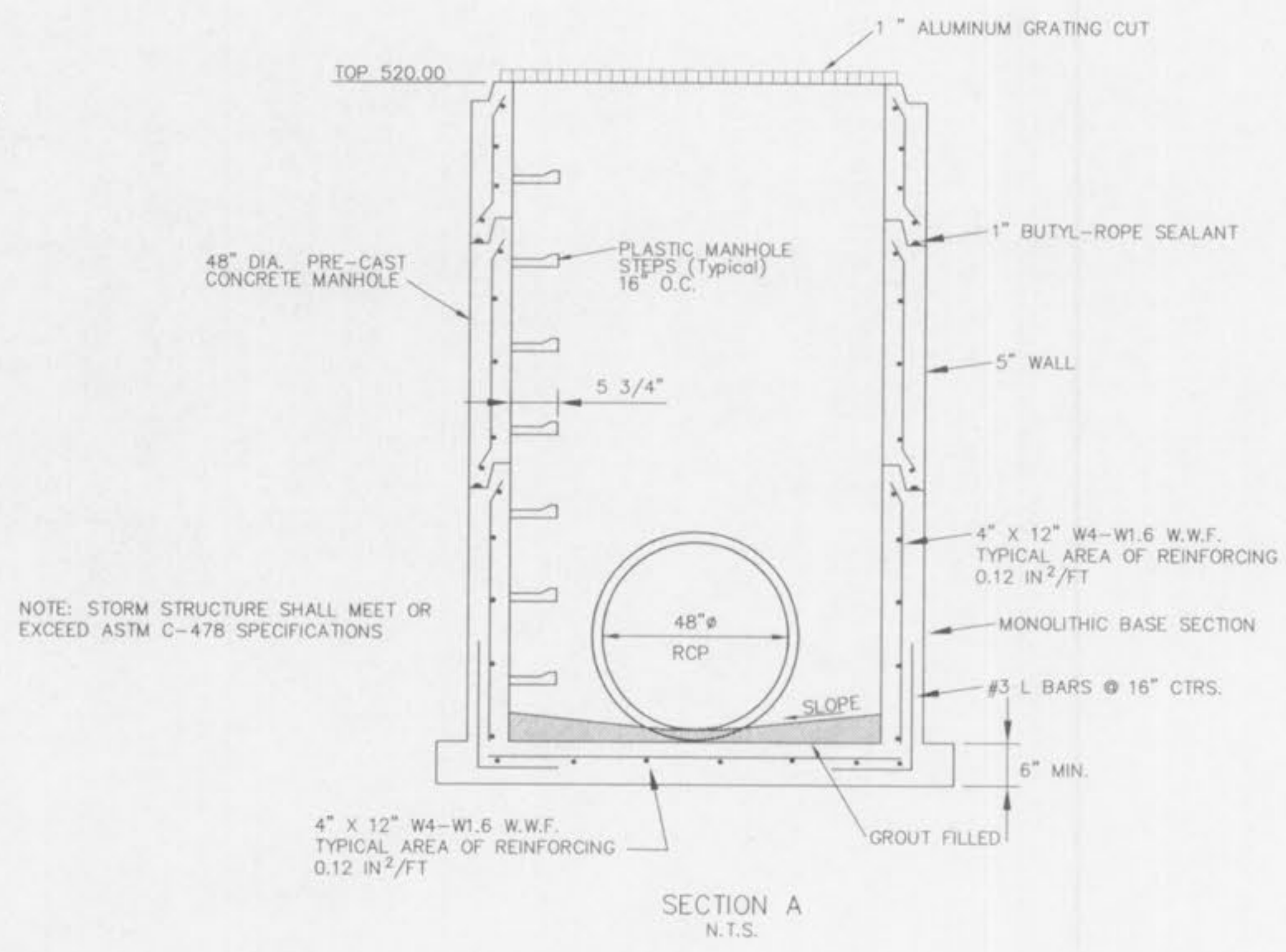
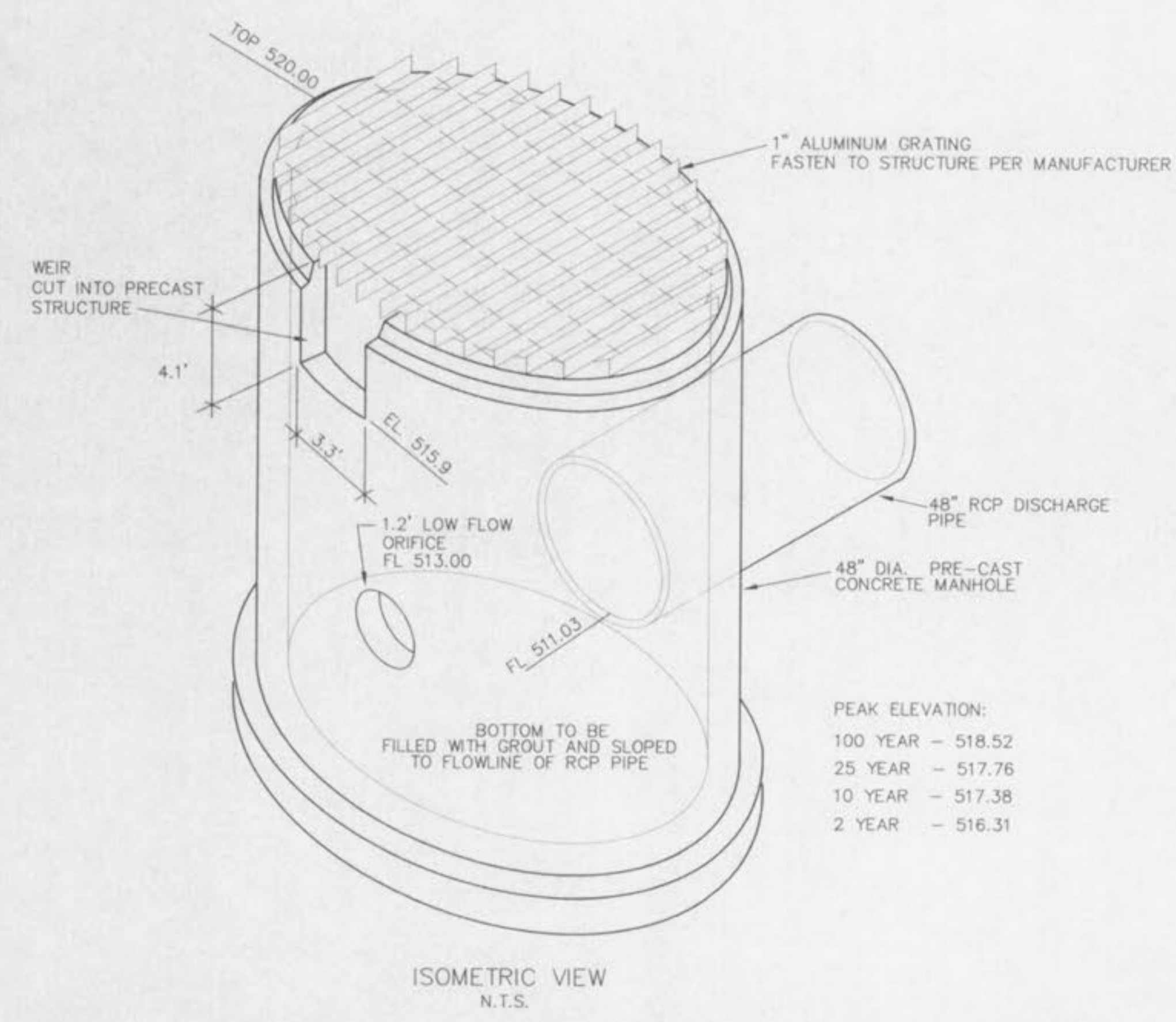
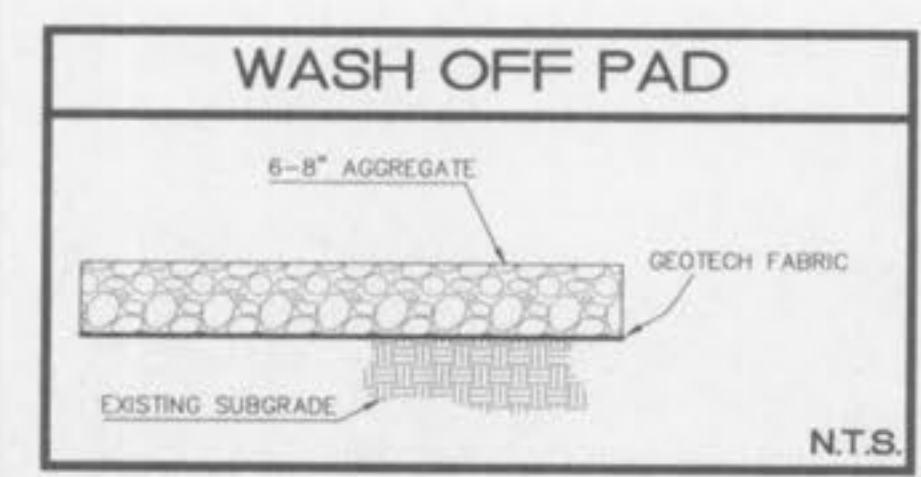
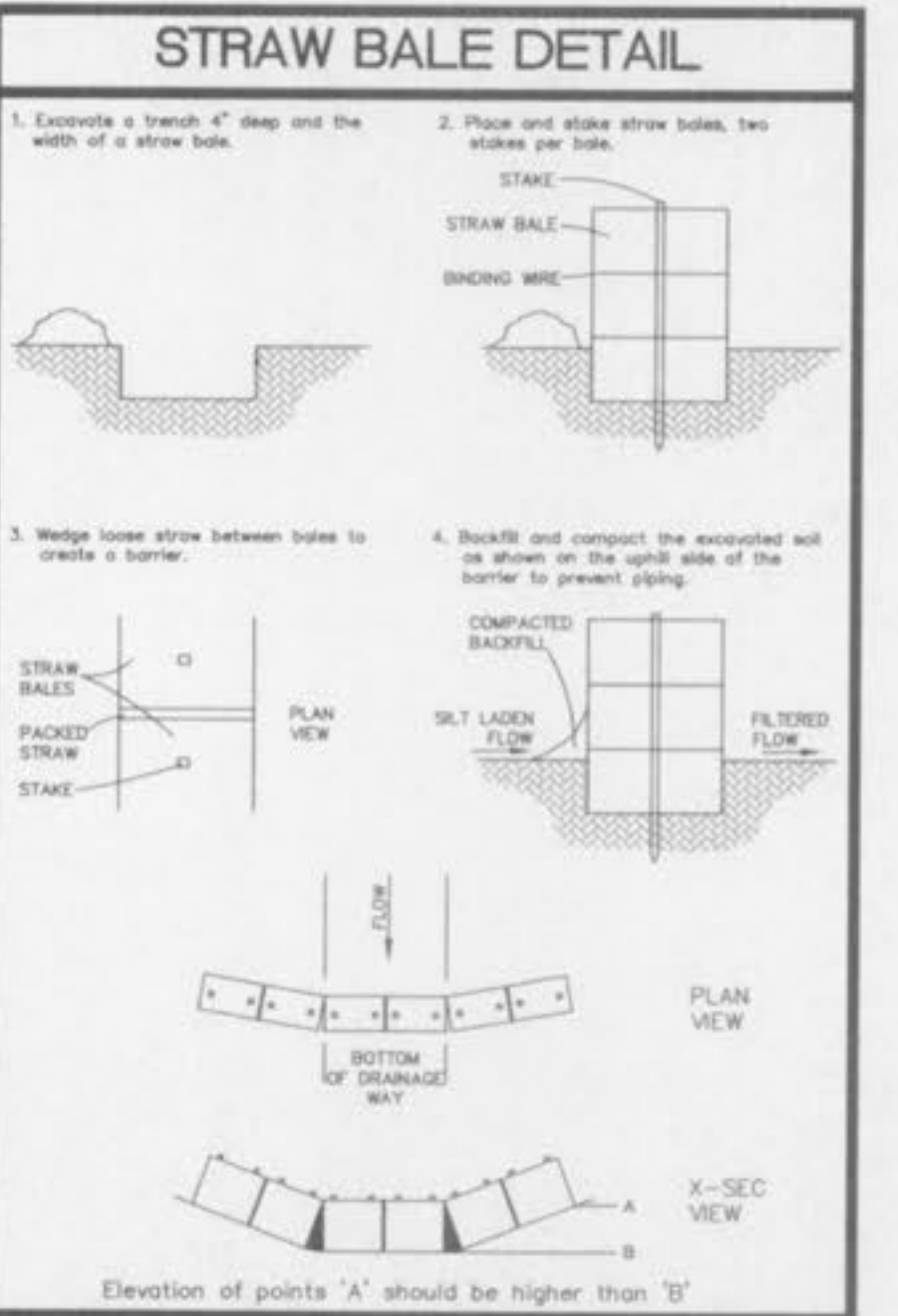
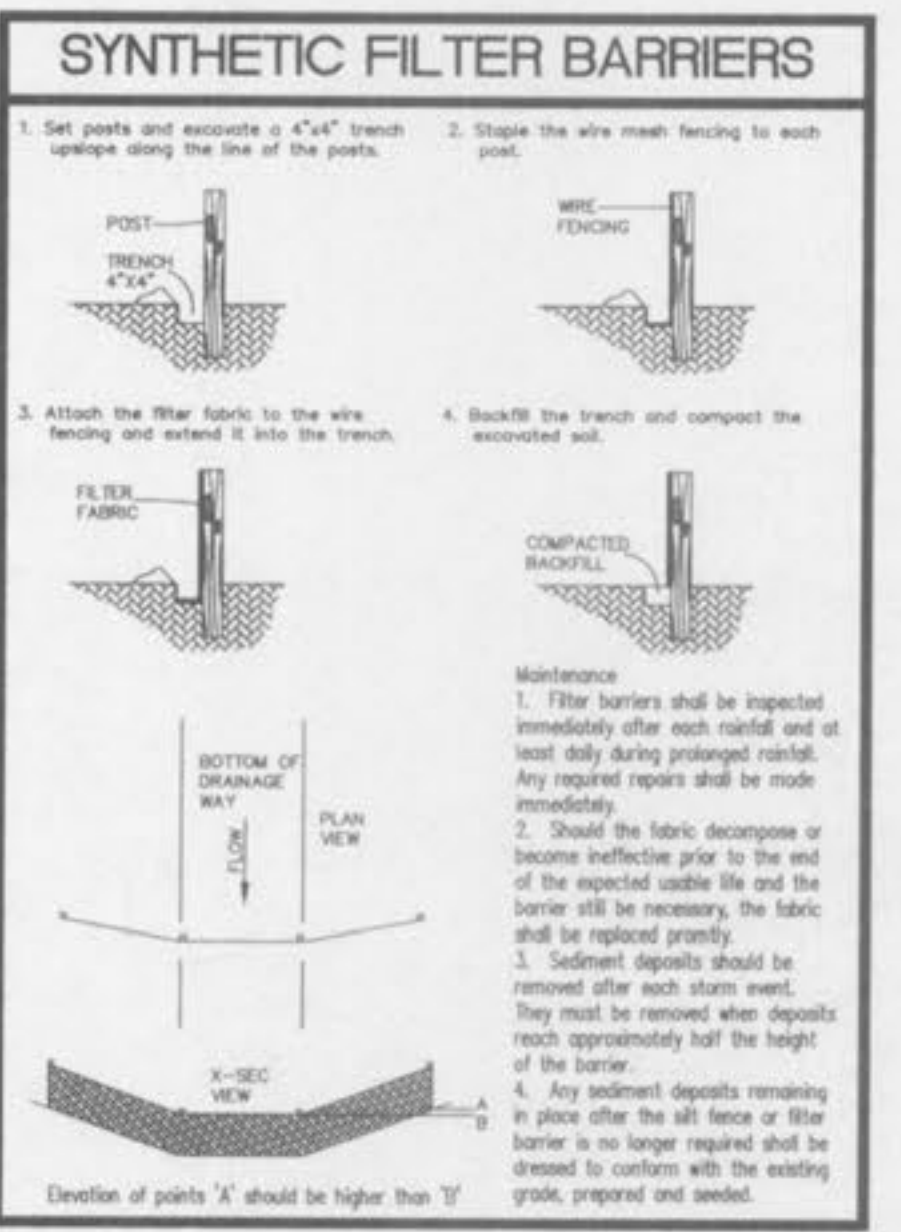
**Temporary:**  
 Wheat or Rye - 150 lbs./ac (3.5 lbs. per 1000 sq. ft.)  
 Oats - 120 lbs./ac (2.75 lbs. per 1000 sq. ft.)

**Seeding Periods:**  
 Fescue or Brome: March 1 to June 1  
 August 1 to October 1  
 Wheat or Rye: March 15 to November 1  
 Oats: March 15 to September 15

**Mulch Rates:**  
 100 lbs. Per 1,000 sq. ft. (4,356 lbs. per acre)

**Fertilizer Rates:**  
 Nitrogen: 30 lbs./ac.  
 Phosphate: 30 lbs./ac.  
 Potassium: 30 lbs./ac.  
 Lime: 600 lbs./ac. ENM\*

\*ENM - Effective Neutralizing Material as per State evaluation of quarried rock.



IMPROVEMENT PLANS  
 PEACEFUL VALLEY  
 OUTFALL STRUCTURE/  
 GENERAL DETAILS

ST. CHARLES ENGINEERING & SURVEYING, INC.  
 801 S. FIFTH STREET, SUITE 202  
 ST. CHARLES, MO 63301  
 TEL: (636) 947-0607 FAX: (636) 947-2448

ORDER NO. 02-0590  
 DATE 07/25/03  
 8