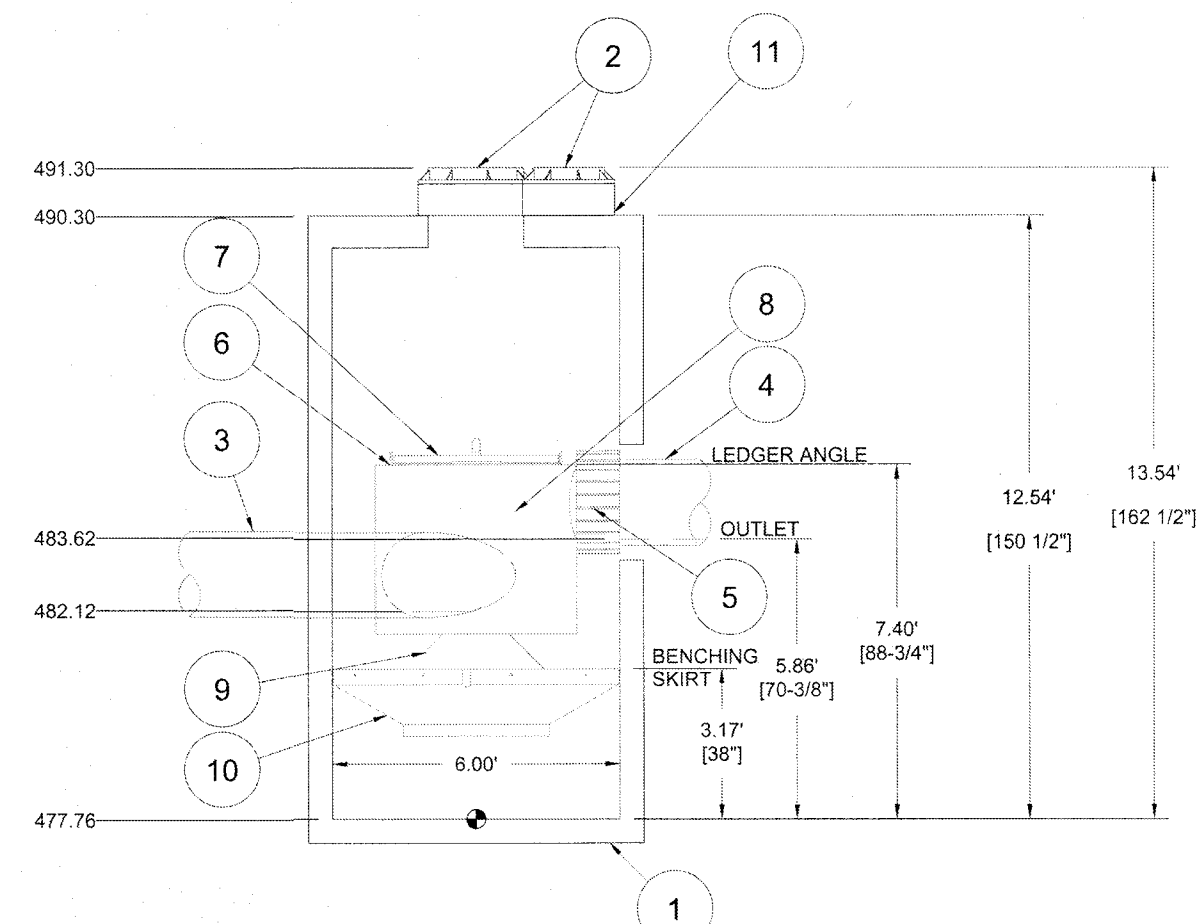


PARTS LIST: 6' DOWNSTREAM DEFENDER

ITEM	SIZE (IN)	MATERIAL	DESCRIPTION
1	72	CONCRETE	I.D. PRECAST MANHOLE
2	18 & 24	-	FRAME & COVER
3	18	PVC	INLET PIPE (BY OTHERS)
4	18	PVC	OUTLET PIPE (BY OTHERS)
5	18	-	PIPE COUPLING (BY OTHERS)
6	-	-	LEDGER ANGLE
7	-	-	SUPPORT FRAME
8	-	-	DIP PLATE
9	-	-	CENTER SHAFT & CONE
10	-	-	BENCHING SKIRT
11	-	-	MATERIALS & LABOR TO ACHIEVE FINAL GRADE (BY OTHERS)

NOTES:

- ENGINEER / CONTRACTOR TO CONFIRM PIPE MATERIALS.
- ALL CONNECTIONS TO DOWNSTREAM DEFENDER TO BE A-LOK CONNECTIONS.

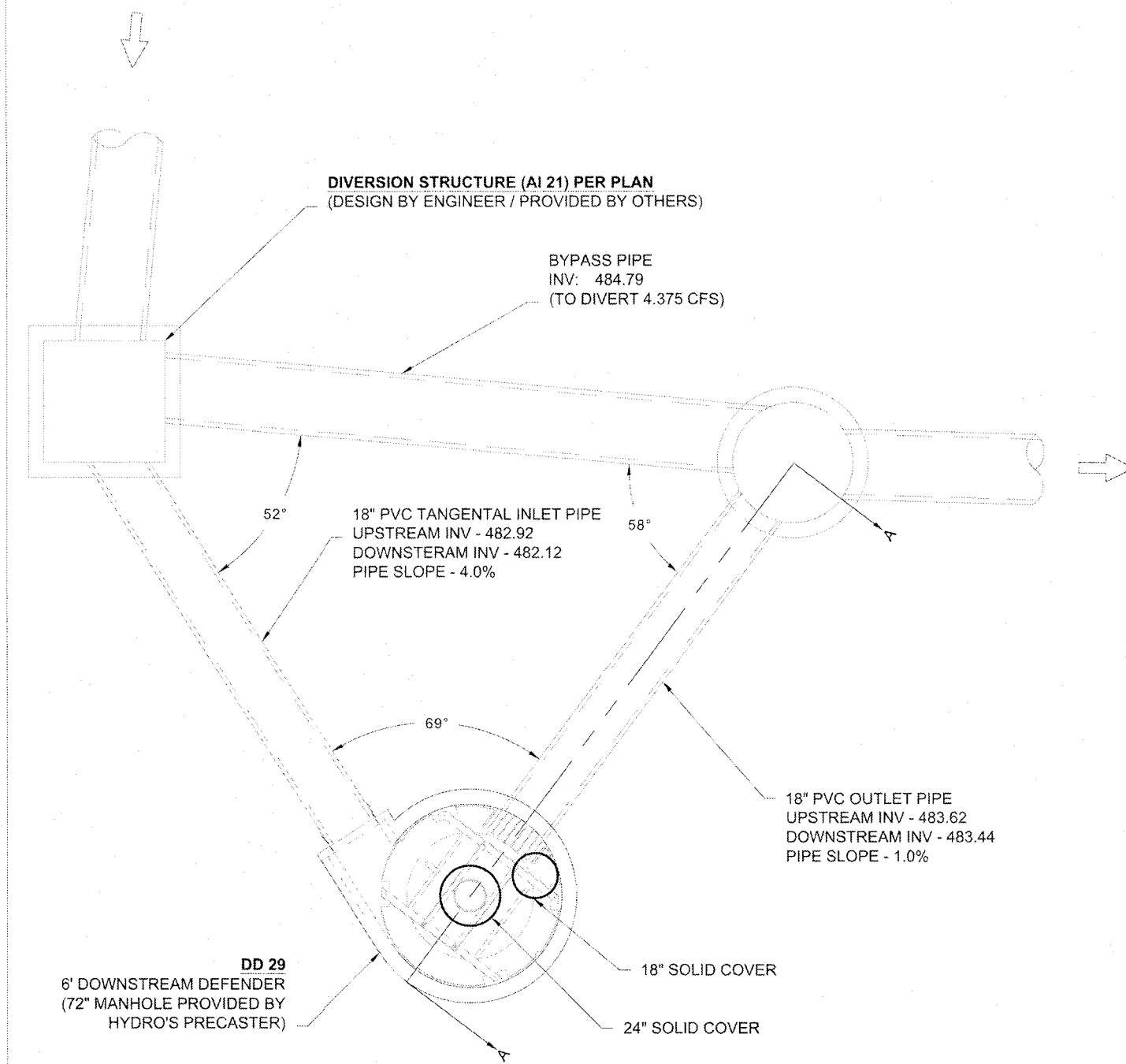


CAPACITIES

- PEAK TREATMENT FLOW: 8.0 CFS (227 L/S)
- SEDIMENT STORAGE CAPACITY: 2.10 YD³ (1.61 m³)
- OIL STORAGE CAPACITY: 216 GALLONS (818 LITERS)

ADDITIONAL DESIGN INFORMATION

- THE OUTLET PIPE STUB IS A ROTO-MOLDED PRODUCT WITH AN I.D. OF 18" THAT CANNOT BE MODIFIED. TO AVOID THE USE OF A REDUCER OR EXPANDER ON THE OUTLET AN 18" OUTLET PIPE SHOULD BE USED IF POSSIBLE.
- ONLY SMALLER INLET PIPES MAY BE USED. THE INLET PIPE INVERT SHOULD BE PLACED ONE INLET PIPE DIAMETER BELOW THE OUTLET PIPE INVERT. THE I.D. OF THE INLET PIPE SHOULD BE PLACED TANGENT TO THE I.D. OF THE MANHOLE. HEADLOSS AT 8.0 CFS WITH AN 18" INLET: 12" (305 mm). HEADLOSS WILL INCREASE WITH SMALLER INLET PIPES.
- SEDIMENT SHALL BE STORED IN A ZONE THAT IS ISOLATED FROM THE MAIN FLOW PATH AND PROTECTED FROM RE-ENTRANCEMENT BY THE BENCHING SKIRT.



PEARL VISTA
OF FALLON, MO

DATE: 07/09/18 DRAWN: SMO
PROJECT #: S091933 CHECKED: GLW

Hydro International
5065 New Baumgartner Road
St. Louis, Missouri 63129
Ph 314-487-0440 Fax 314-487-8944
www.sterling-eng-surf.com

AS NOTED

2 SHEET OF 3

ISSUE REMARKS/DATE

- 7/2/2018 INITIAL SUBMITTAL
- 8/30/2018 REVISED PER CITY COMMENTS
- 8/30/2018 REVISED PER CITY COMMENTS

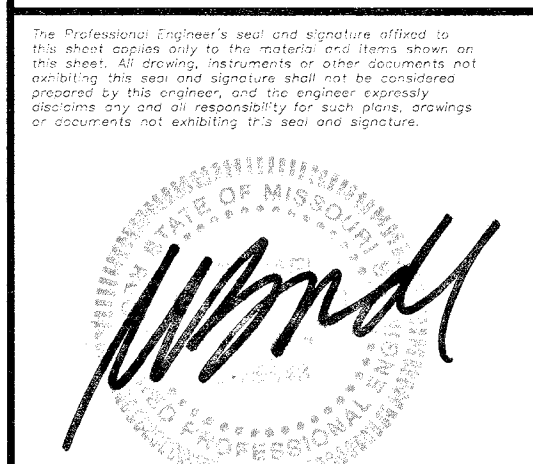
PROJECT TITLE

PEARL VISTA
OF FALLON, MISSOURI

THE STERLING CO.
ENGINEERS & SURVEYORS

5065 New Baumgartner Road
St. Louis, Missouri 63129
Ph 314-487-0440 Fax 314-487-8944
www.sterling-eng-surf.com

Corporate Certificate of Authority #001348



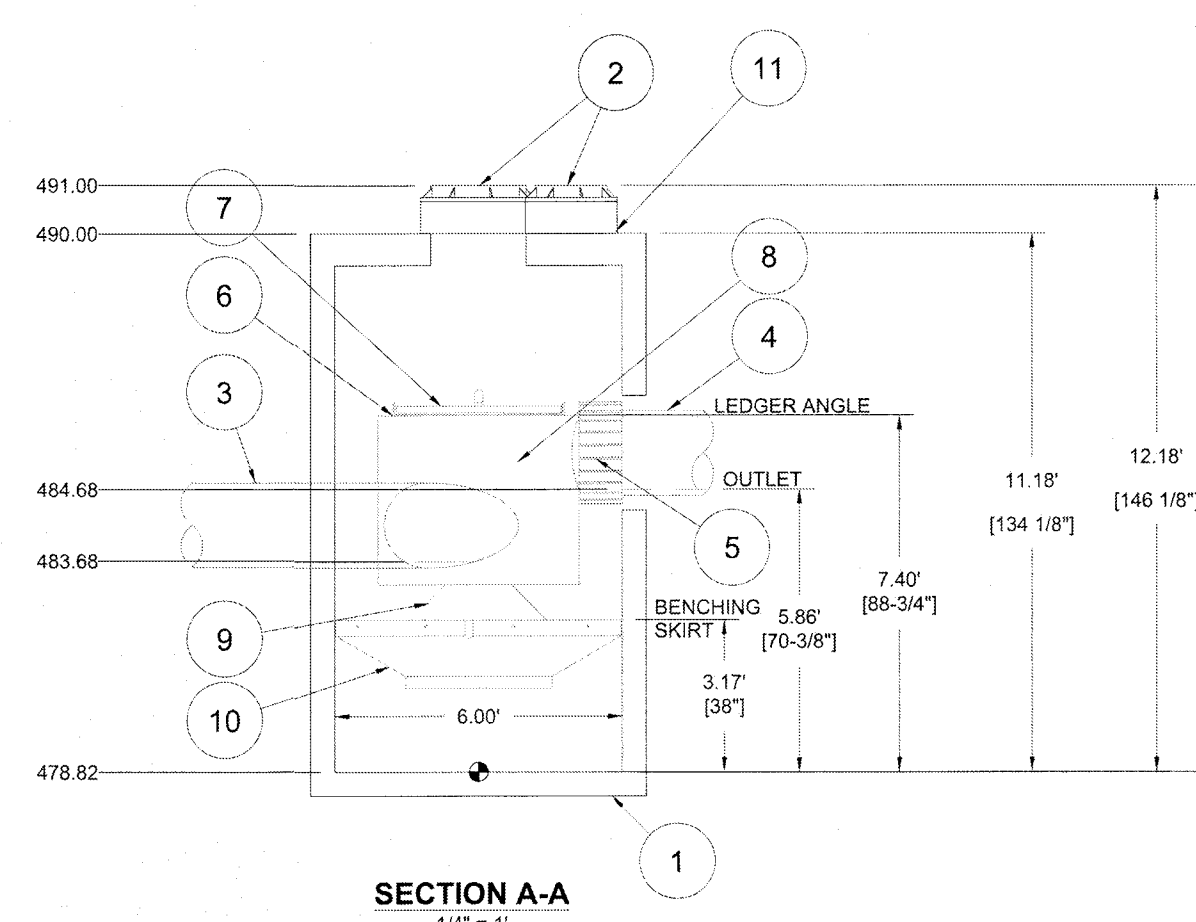
Date: 8/30/2018
Michael G. Boering
License No. MO E-28643
Professional Engineer

PARTS LIST: 6' DOWNSTREAM DEFENDER

ITEM	SIZE (IN)	MATERIAL	DESCRIPTION
1	72	CONCRETE	I.D. PRECAST MANHOLE
2	18 & 24	-	FRAME & COVER
3	12	PVC	INLET PIPE (BY OTHERS)
4	12	PVC	OUTLET PIPE (BY OTHERS)
5	18	-	PIPE COUPLING (BY OTHERS)
6	-	-	LEDGER ANGLE
7	-	-	SUPPORT FRAME
8	-	-	DIP PLATE
9	-	-	CENTER SHAFT & CONE
10	-	-	BENCHING SKIRT
11	-	-	MATERIALS & LABOR TO ACHIEVE FINAL GRADE (BY OTHERS)

NOTES:

- ENGINEER / CONTRACTOR TO CONFIRM PIPE MATERIALS.
- ALL CONNECTIONS TO DOWNSTREAM DEFENDER TO BE A-LOK CONNECTIONS.

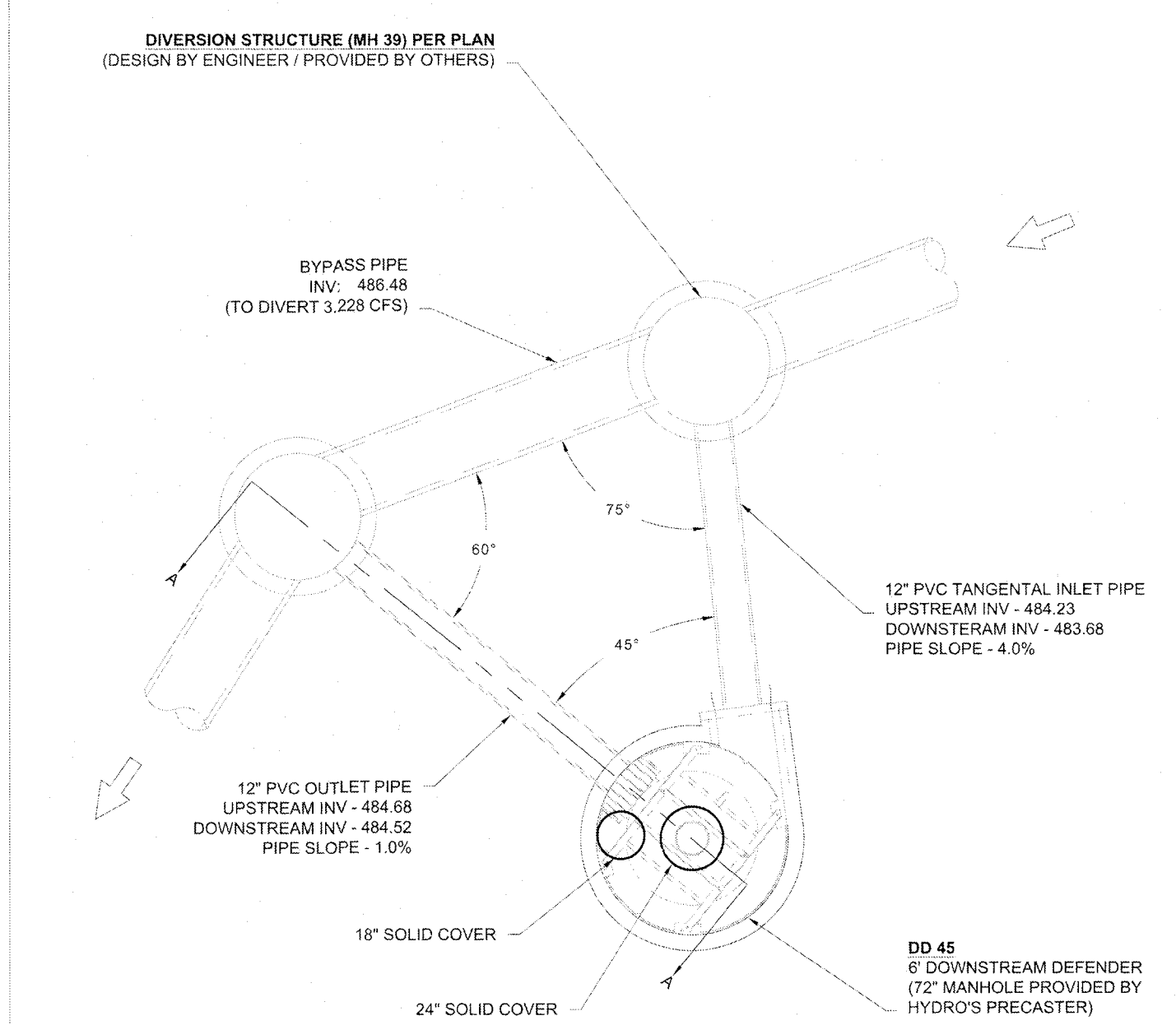


CAPACITIES

- PEAK TREATMENT FLOW: 8.0 CFS (227 L/S)
- SEDIMENT STORAGE CAPACITY: 2.10 YD³ (1.61 m³)
- OIL STORAGE CAPACITY: 216 GALLONS (818 LITERS)

ADDITIONAL DESIGN INFORMATION

- THE OUTLET PIPE STUB IS A ROTO-MOLDED PRODUCT WITH AN I.D. OF 18" THAT CANNOT BE MODIFIED. TO AVOID THE USE OF A REDUCER OR EXPANDER ON THE OUTLET AN 18" OUTLET PIPE SHOULD BE USED IF POSSIBLE.
- ONLY SMALLER INLET PIPES MAY BE USED. THE INLET PIPE INVERT SHOULD BE PLACED ONE INLET PIPE DIAMETER BELOW THE OUTLET PIPE INVERT. THE I.D. OF THE INLET PIPE SHOULD BE PLACED TANGENT TO THE I.D. OF THE MANHOLE. HEADLOSS AT 8.0 CFS WITH AN 18" INLET: 12" (305 mm). HEADLOSS WILL INCREASE WITH SMALLER INLET PIPES.
- SEDIMENT SHALL BE STORED IN A ZONE THAT IS ISOLATED FROM THE MAIN FLOW PATH AND PROTECTED FROM RE-ENTRANCEMENT BY THE BENCHING SKIRT.



PEARL VISTA
OF FALLON, MO

DATE: 07/09/18 DRAWN: SMO
PROJECT #: S091933 CHECKED: GLW

Hydro International
5065 New Baumgartner Road
St. Louis, Missouri 63129
Ph 314-487-0440 Fax 314-487-8944
www.sterling-eng-surf.com

AS NOTED

3 SHEET OF 3

ELITE PEARL VISTA, LLC
5091 BAUMGARTNER ROAD
ST. LOUIS, MO 63129
Ph. 314-487-6717

DOWNSTREAM DEFENDER DETAILS

P+Z No. 18-000083
City No.
Date: Aug. 30, 2018
Job No. 17-08-193

Page No. **8.3**