

PEARL VISTA
DRAINAGE AREAS

Drainage Area	Total Area (AC)	Total 100% Impervious	15 Year, 20 Min. 100% P.I.	Total 15 Year, 20 Min 100% Impervious	Total 5% Impervious	15 Year, 20 Min. 5% P.I.	Total 15 Year, 20 Min 5% Q.	Total 15 YR Q.
1	0.11	0.04	3.85	0.15	0.07	1.87	0.13	0.28
2	0.44	0.12	3.85	0.46	0.32	1.87	0.60	1.06
3	0.11	0.04	3.85	0.15	0.07	1.87	0.13	0.28
4	0.07	0.07	3.85	0.27	0.00	1.87	0.00	0.27
5	0.49	0.49	3.85	1.89	0.00	1.87	0.00	1.89
6	0.20	0.20	3.85	1.12	0.00	1.87	0.00	1.12
7	0.29	0.29	3.85	1.12	0.00	1.87	0.00	1.12
8	0.50	0.50	3.85	1.89	0.00	1.87	0.00	1.89
9	0.93	0.93	3.85	3.58	0.00	1.87	0.00	3.58
10	0.22	0.29	3.85	0.35	0.13	1.87	0.24	0.59
11	0.26	0.26	3.85	1.00	0.00	1.87	0.00	1.00
12	0.24	0.09	3.85	0.35	0.15	1.87	0.28	0.63
13	0.26	0.31	3.85	1.19	-0.05	1.87	-0.09	1.10
14	0.32	0.07	3.85	0.27	0.25	1.87	0.47	0.74
15	0.14	0.14	3.85	0.54	0.00	1.87	0.00	0.54
16	0.16	0.05	3.85	0.19	0.11	1.87	0.21	0.40
17	0.20	0.07	3.85	0.27	0.13	1.87	0.24	0.51
18	0.36	0.10	3.85	0.39	0.26	1.87	0.49	0.88
19	0.61	0.18	3.85	0.69	0.43	1.87	0.80	1.49
20	0.77	0.53	3.85	2.04	0.24	1.87	0.45	2.49
21	0.18	0.10	3.85	0.39	0.08	1.87	0.15	0.54
22	0.10	0.06	3.85	0.23	0.04	1.87	0.07	0.30
23	0.91	0.59	3.85	2.27	0.32	1.87	0.60	2.87
24	0.75	0.48	3.85	1.85	0.27	1.87	0.50	2.35
25	0.38	0.03	3.85	0.12	0.35	1.87	0.65	0.77
26	0.29	0.07	3.85	0.27	0.22	1.87	0.41	0.68
27	1.17	0.15	3.85	0.58	1.02	1.87	1.91	2.49
28	0.12	0.05	3.85	0.19	0.07	1.87	0.13	0.32
28.1	0.15	0.05	3.85	0.19	0.10	1.87	0.19	0.38
29	0.35	0.22	3.85	0.85	0.13	1.87	0.24	1.09
30	0.34	0.22	3.85	0.85	0.12	1.87	0.22	1.07
31	0.32	0.12	3.85	0.46	0.20	1.87	0.37	0.83
32	0.71	0.17	3.85	0.65	0.54	1.87	1.01	1.66
33	0.59	0.34	3.85	1.31	0.25	1.87	0.47	1.78
34	0.52	0.29	3.85	1.12	0.23	1.87	0.43	1.55
35	0.16	0.04	3.85	0.15	0.12	1.87	0.22	0.37
36	0.17	0.03	3.85	0.12	0.14	1.87	0.26	0.38
37	0.45	0.10	3.85	0.39	0.35	1.87	0.65	1.04
38	0.25	0.21	3.85	0.81	0.04	1.87	0.07	0.88
39	0.43	0.10	3.85	0.39	0.33	1.87	0.62	1.01
40	0.28	0.25	3.85	0.96	0.03	1.87	0.06	1.02
41	1.33	0.25	3.85	0.96	1.08	1.87	2.02	2.98
42	0.48	0.31	3.85	1.19	0.17	1.87	0.32	1.51

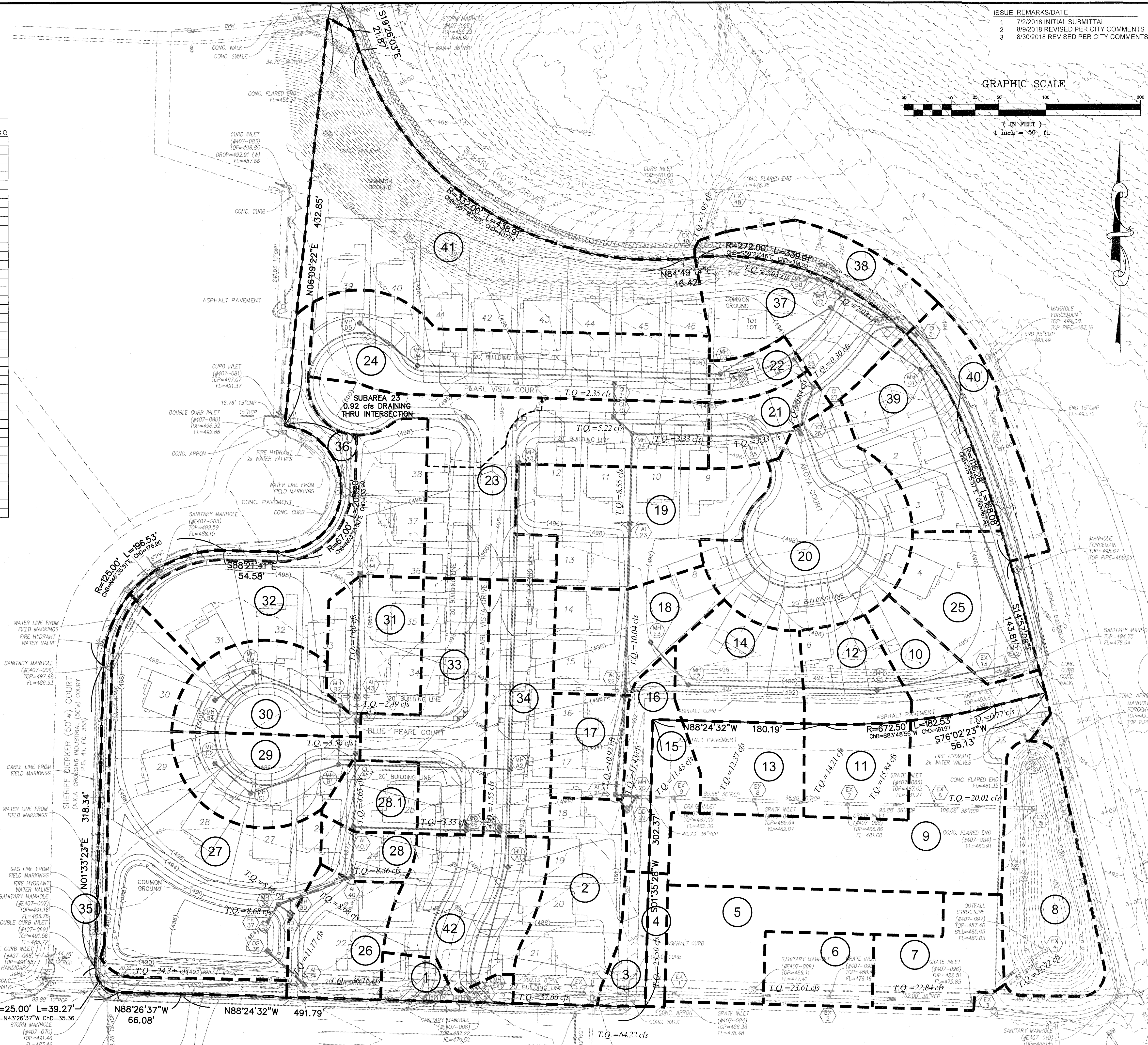
DRAINAGE AREA CALCULATIONS

INLET CAPACITY TABLE

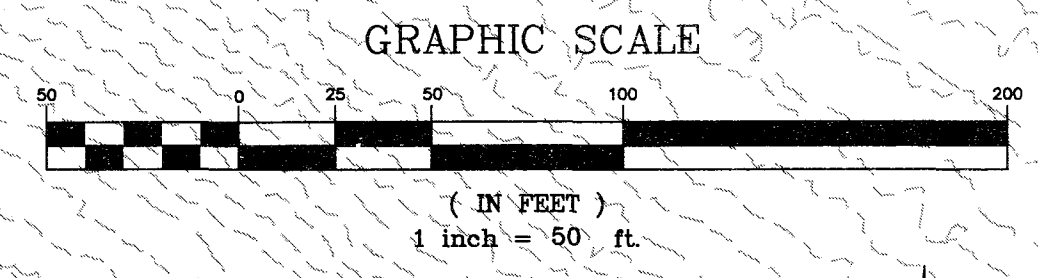
INLET NUMBER	INLET TYPE	STREET GRADE	INLET CAPACITY (CFS)	Q15 (CFS)	Q15 BYPASS FROM UPSTREAM INLET (CFS)	TOTAL Q15 TO INLET (CFS)	Q15 BYPASS (CFS)	NOTES
26	DCI	2.0%	6.60	2.49	0.00	2.49	0.00	BYPASS CI 27
27	CI	4.0%	1.21	0.54	0.00	0.54	0.00	BYPASS EX 49
28	CI	4.0%	1.21	0.30	0.00	0.30	0.00	BYPASS EX 49
30	CI	LOW	4.00	2.87	0.00	2.87	0.00	
31	CI	LOW	4.00	2.35	0.00	2.35	0.00	
41	CI	2.0%	1.93	1.09	0.00	1.09	0.00	BYPASS CI 46
42	CI	2.0%	1.93	1.07	0.00	1.07	0.00	BYPASS CI 46
46	DCI	4.0%	3.56	1.78	0.00	1.78	0.00	BYPASS GI 52
47	DCI	4.0%	3.56	1.55	0.00	1.55	0.00	BYPASS GI 52
51	CI	1.5%	2.11	1.02	0.00	1.02	0.00	BYPASS EX 49
52	GI	1.5%	2.11	1.51	0.00	1.51	0.00	BYPASS OFFSITE

INLET CAPACITY TABLE

THE UNDERGROUND UTILITIES SHOWN HEREON WERE PLOTTED FROM AVAILABLE INFORMATION AND DO NOT NECESSARILY REFLECT THE ACTUAL EXISTENCE, NONEXISTENCE, SIZE, TYPE, NUMBER OR LOCATION OF THESE OR OTHER UTILITIES. THE GENERAL CONTRACTOR SHALL BE RESPONSIBLE FOR VERIFYING THE ACTUAL LOCATION OF ALL UNDERGROUND UTILITIES, SHOWN OR NOT SHOWN, AND SAID UTILITIES SHALL BE LOCATED IN THE FIELD PRIOR TO ANY GRADING, EXCAVATION OR CONSTRUCTION OF IMPROVEMENTS. THESE PROVISIONS SHALL IN NO WAY ABSOLVE ANY PARTY FROM COMPLYING WITH THE UNDERGROUND FACILITY SAFETY AND DAMAGE PREVENTION ACT, CHAPTER 319, RSMo



ISSUE	REMARKS/DATE
1	7/2/2018 INITIAL SUBMITTAL
2	8/9/2018 REVISED PER CITY COMMENTS
3	8/30/2018 REVISED PER CITY COMMENTS



PROJECT TITLE

PEARL VISTA
OF FALLON, MISSOURI

THE STERLING CO.
ENGINEERS & SURVEYORS
5055 New Baumgartner Road
St. Louis, Missouri 63129
Ph 314-487-0440 Fax 314-487-9844
www.sterling-eng-survey.com
Corporate Certificate of Authority #001348



Date: 8/30/2018
Michael G. Boerding
License No. MO E-28643
Professional Engineer

ELITE PEARL VISTA, LLC
5091 BAUMGARTNER ROAD
ST. LOUIS, MO 63129
Ph. 314-487-6717

DRAINAGE AREA MAP

P+Z No. 18-000083
City No.
Date: Aug. 30, 2018
Job No. 17-08-193
Page No.

9.1

IMP