

**LEGEND**

I.D. - NOMINAL PIPE SIZE  
 O.D. - OUTSIDE DIAMETER OF PIPE  
 H - COVER ABOVE TOP OF PIPE  
 A - EMBEDDED BELOW PIPE (SEE TABLE)

**TABLE OF EMBEDDED DEPTHS BELOW PIPE**

I.D.	A MIN. SOIL	A MIN. ROCK
27" & SMALLER	3"	6"

**LEGEND**

▨ TAMPED BACK FILL  
 ▨ COMPACTED BACK FILL  
 ○ GRANULAR BEDDING

GRANULAR BEDDING SHALL BE CRUSHED ROCK OR FEA GRAVEL WITH NOT LESS THAN 95% PASSING 1/2" (95% PASSING 3/4" FOR 30" AND LARGER PIPE) AND NOT LESS THAN 95% RETAINED ON A #4; TO BE PLACED IN NOT MORE THAN 6" LAYERS AND COMPACTED BY SLUING WITH A SHOVEL OR VIBRATING.

COMPACTED BACK FILL SHALL BE FINELY DIVIDED JOB EXCAVATED MATERIAL FREE FROM DEBRIS, ORGANIC MATERIAL, AND STONES, PLACED IN UNIFORM LAYERS NOT MORE THAN 6" THICK, COMPACTED TO 95% MAXIMUM DENSITY AS DETERMINED BY A.S.T.M. D698, OR GRADED AGGREGATE. GRANULAR BACK FILL MATERIAL MAY BE SUBSTITUTED FOR ALL OR PART OF COMPACTED BACK FILL.

TAMPED BACK FILL SHALL BE FINELY DIVIDED JOB EXCAVATED MATERIAL FREE FROM DEBRIS, ORGANIC MATERIAL, AND STONES, HAND PLACED IN UNIFORM LAYERS NOT MORE THAN 8" THICK AND TAMPED AROUND CONDUIT PIPE. GRANULAR BACK FILL MATERIAL MAY BE SUBSTITUTED FOR ALL OR PART OF TAMPED BACK FILL.

TRENCH BACK FILL SHALL BE AS REQUIRED IN THE "LAYING AND BACK FILL" SECTION OF THE DETAILED SPECIFICATIONS.

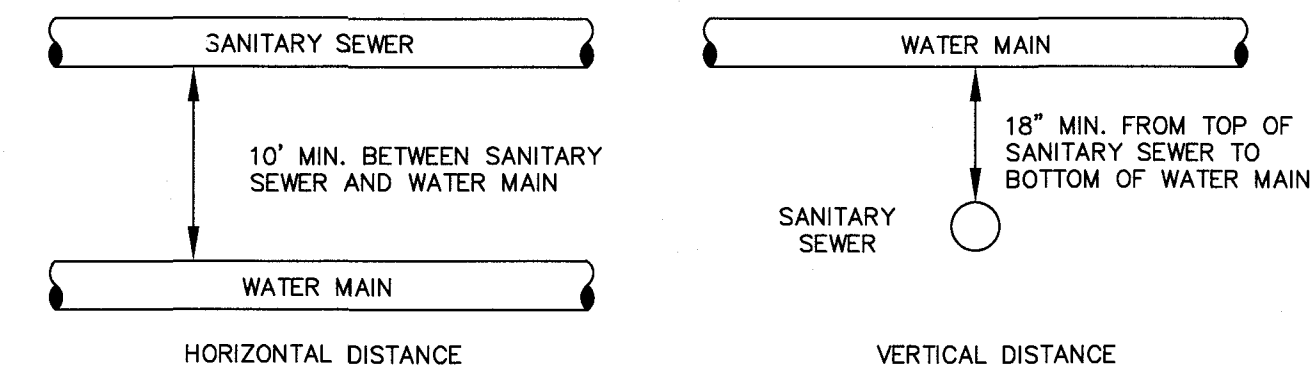
FUNCTION: THE TYPE OF EMBEDDED TO BE USED SHALL BE AS SPECIFIED IN THE PLANS AND SPECIFICATIONS.

TRACER WIRE REQUIRED ON ALL WATER MAINS

**WATER MAIN EMBEDDED**  
NOT TO SCALE

CITY OF O'FALLON  
 ENGINEERING DEPARTMENT  
 O'FALLON, MISSOURI

**WATER MAIN EMBEDDED**

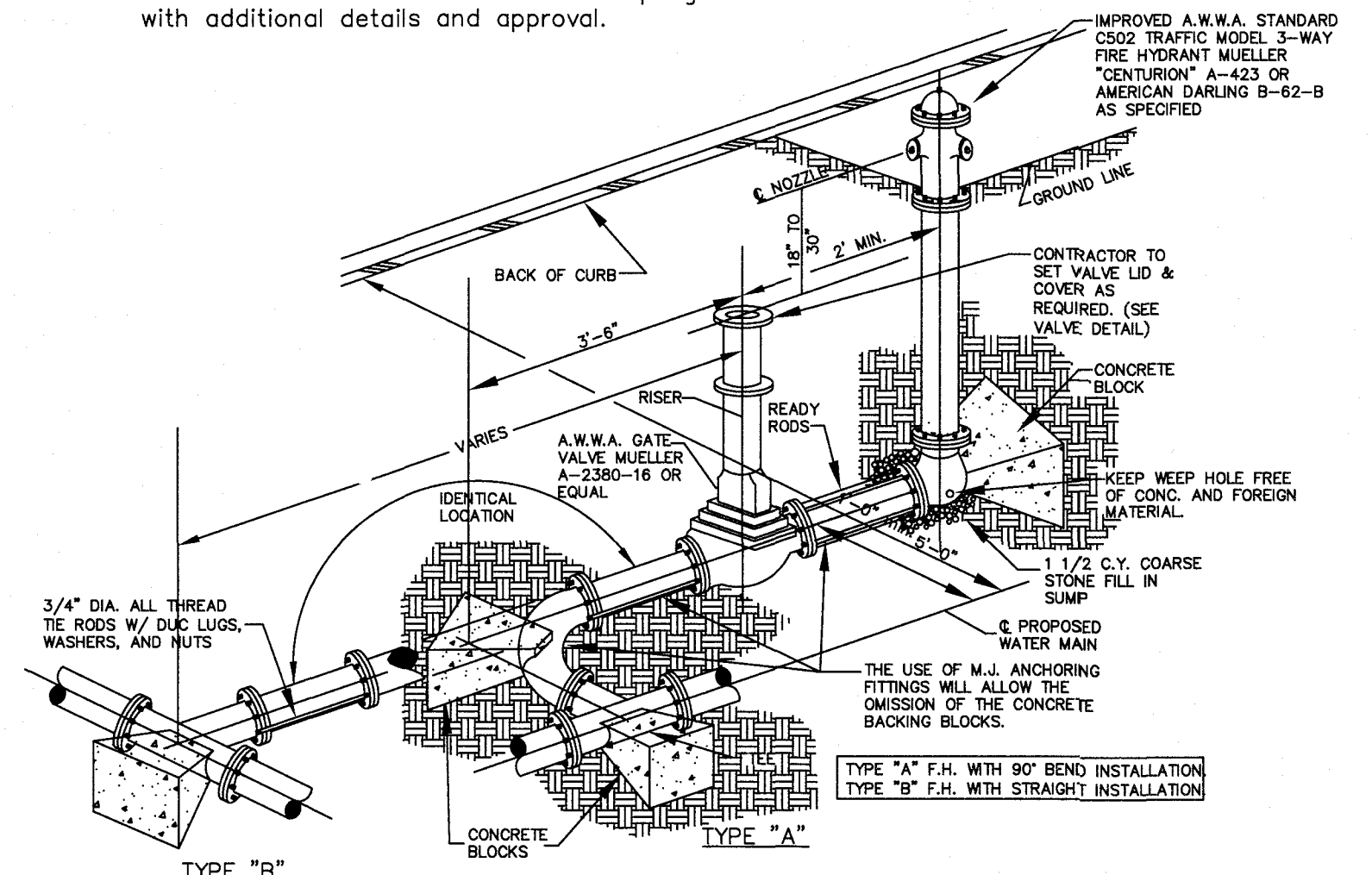


**TYPICAL WATER AND SEWER SEPARATION**  
NOT TO SCALE

CITY OF O'FALLON  
 ENGINEERING DEPARTMENT  
 O'FALLON, MISSOURI

**WATER AND SEWER SEPARATION DETAIL**

Note: Other connections such as anchor coupling are allowable with additional details and approval.



**FIRE HYDRANT DETAIL**  
NOT TO SCALE

CITY OF O'FALLON  
 ENGINEERING DEPARTMENT  
 O'FALLON, MISSOURI

**FIRE HYDRANT DETAILS**

**ISSUE REMARKS/DATE**

1	7/2/2018	INITIAL SUBMITTAL
2	8/9/2018	REVISED PER CITY COMMENTS
3	8/30/2018	REVISED PER CITY COMMENTS

PROJECT TITLE

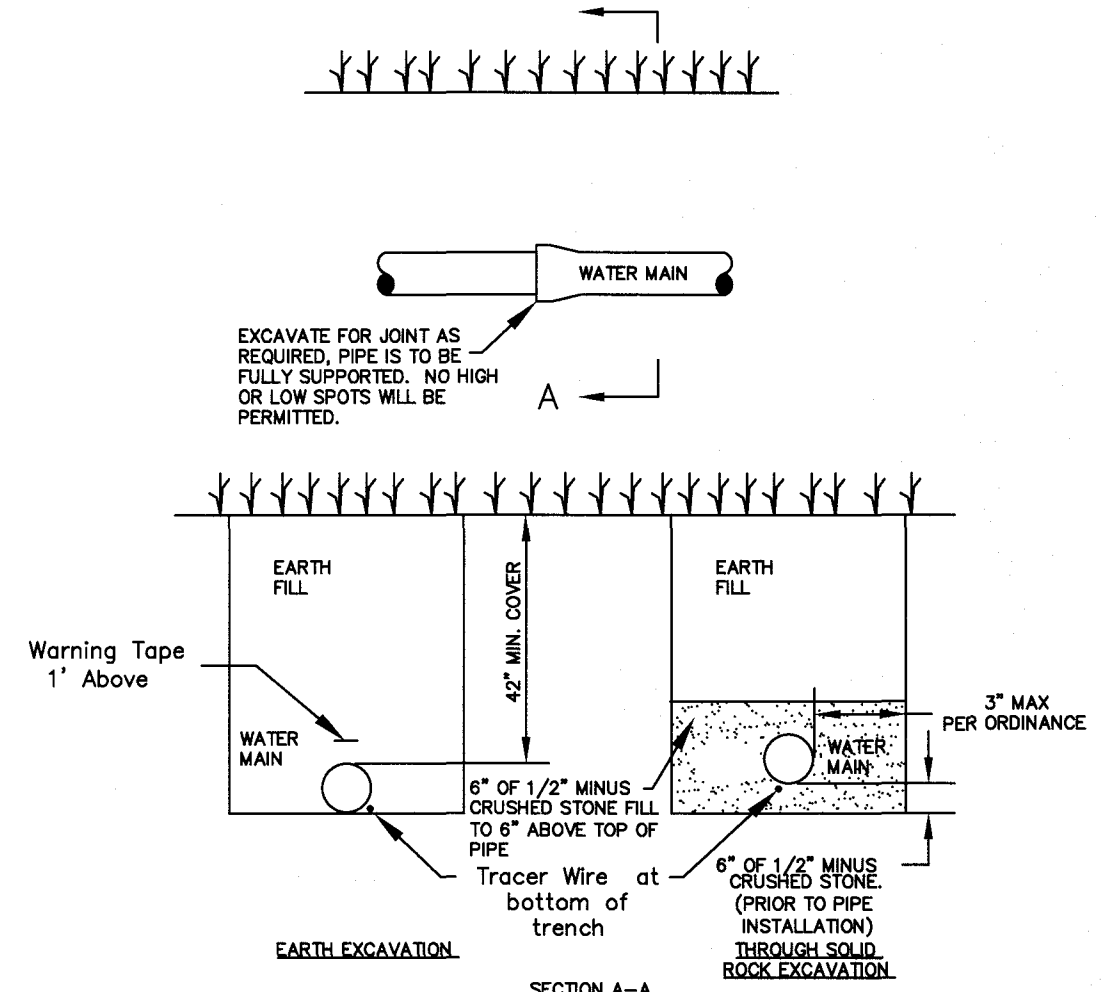
**PEARL VISTA**  
O'FALLON, MISSOURI

**THE STERLING CO.**  
 ENGINEERS & SURVEYORS  
 5055 New Baumgartner Road  
 St. Louis, Missouri 63129  
 Ph. 314-487-0440 Fax 314-487-8944  
 www.sterling-eng-sur.com  
 Corporate Certificate of Authority #001348

The Professional Engineer's seal and signature defined to this sheet appear only on the material and items placed on this sheet. All opening, instruments or other documents not executed by the seal and signature are null and void. The Professional Engineer's seal and signature are not to be used on any other project without the written consent of the Professional Engineer.



Date: 8/30/2018  
 Michael G. Boerding  
 License No. MO E-28643  
 Professional Engineer



**TYPICAL WATER MAIN INSTALLATION DETAILS**  
NOT TO SCALE

CITY OF O'FALLON  
 ENGINEERING DEPARTMENT  
 O'FALLON, MISSOURI

**WATER MAIN INSTALLATION DETAIL**

Ductile Iron Pipe installation shall follow the Ductile Iron Research Association (DIPRA) guide line.  
 The Installation of PVC Pipe shall follow the Uni-Bell PVC Pipe Association Handbook of PVC Design and Construction.

**ELITE PEARL VISTA, LLC**  
 5091 BAUMGARTNER ROAD  
 ST. LOUIS, MO 63129  
 Ph. 314-487-6717

**WATER MAIN DETAILS**

P+Z No. 18-000083  
 City No.  
 Date: Aug. 30, 2018  
 Job No. 17-08-193  
 Page No.

**DTL6**