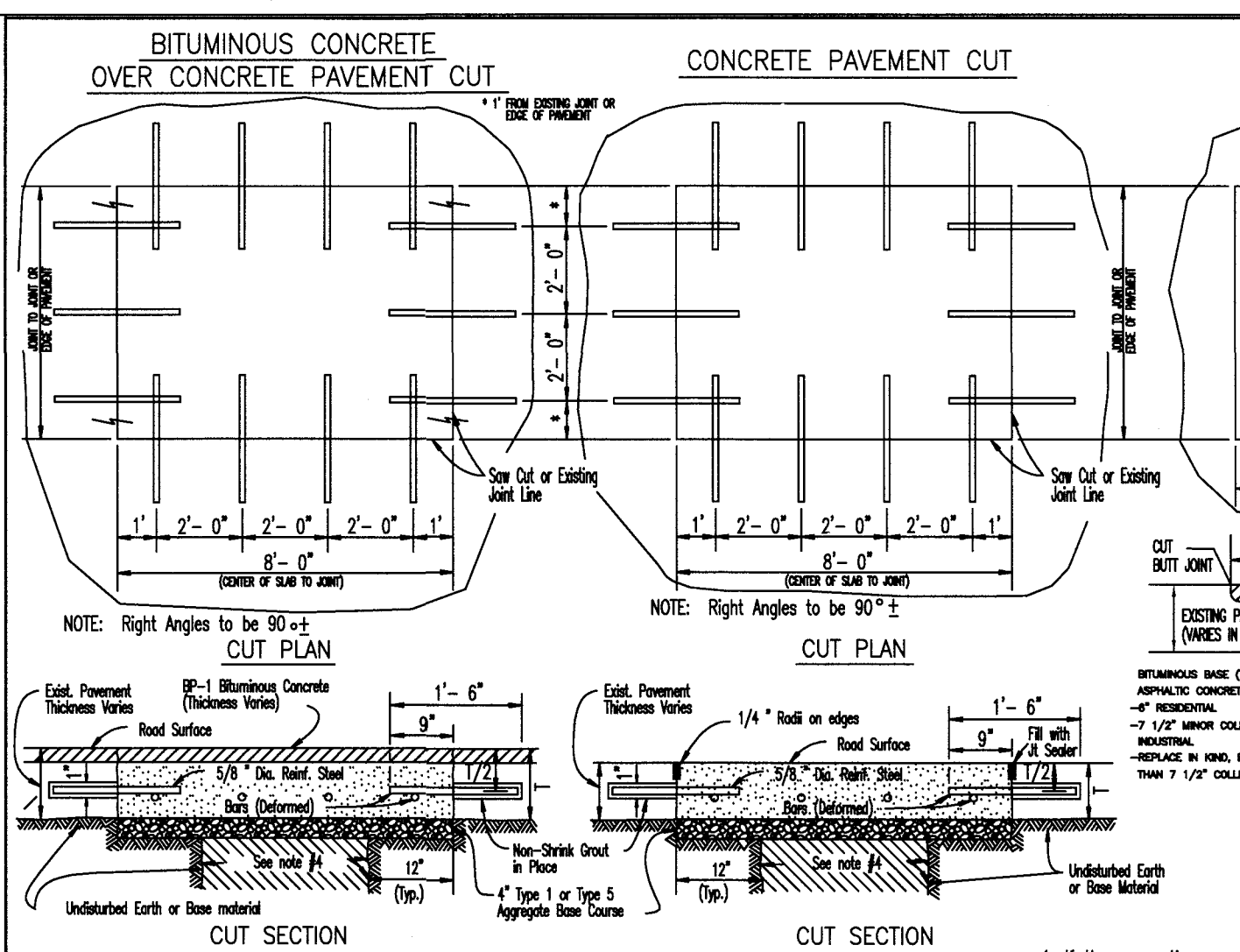


GENERAL NOTES

- Do not scale drawing. Follow dimensions.
- For longitudinal and transverse joints, dowel and tie bar requirements and curb dimensions not shown refer to the Pavement Construction Details for "Sidewalk and Curb".
- All necessary pavement markings shall be as required by City of O'Fallon.
- For roadway cross slopes, pavement types and thickness refer to Standard Typical Sections.
- Permits will not be issued for building construction on lots abutting a temporary turnaround unless and until the turnaround is actually constructed.
- The removal of the temporary turnaround surface, the restoration of the disturbed ground, and the extension of any sidewalk shall be the responsibility of the parties that will be extending the street.
- Other temporary turn around types can be considered depending on type and dimensions.
- Stub streets over two hundred fifty (250) feet shall have a minimum temporary turnaround pavement radius of forty (40) feet, covered by a temporary turnaround easement to remain until the road is extended and plotted. In lieu of turnarounds, the Planning and Zoning Commission may approve a "T" or "Y" shaped paved space on streets which are less than two hundred fifty (250) feet in length and are planned to be extended in the future.

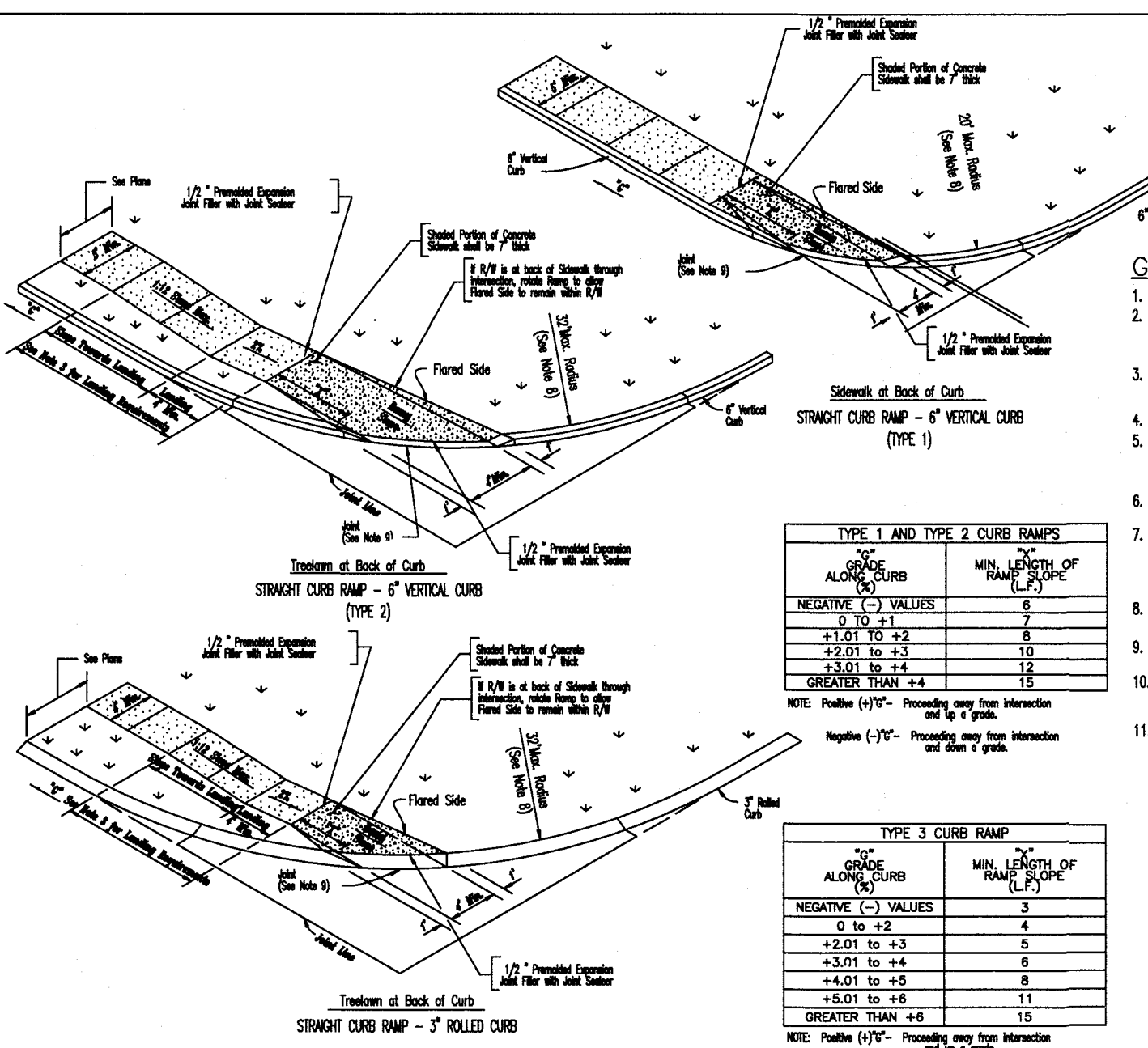
CITY OF O'FALLON
 ENGINEERING DEPARTMENT
 O'FALLON, MISSOURI



GENERAL NOTES

- Minimum thickness for pavement required is CONCRETE (1) BITUMINOUS (1).
- All residential floor and local streets, residential collector, all county and non-residential streets, all arterial streets, all interstates, and all expressways shall require 4" Type 1 or Type 5 Aggregate Base Course, Concrete Base Course, Concrete Base Course, and 8" or greater 1.5 inch concrete slab.
- If the excavations are made in the improved portion of the roadway, the contractor shall be responsible for providing adequate temporary support for the existing pavement. There will be plastic membrane placed between the rock base and the existing pavement. The rock base shall be placed in a minimum of eight (8) days minimum strength, four thousand psi concrete mix.

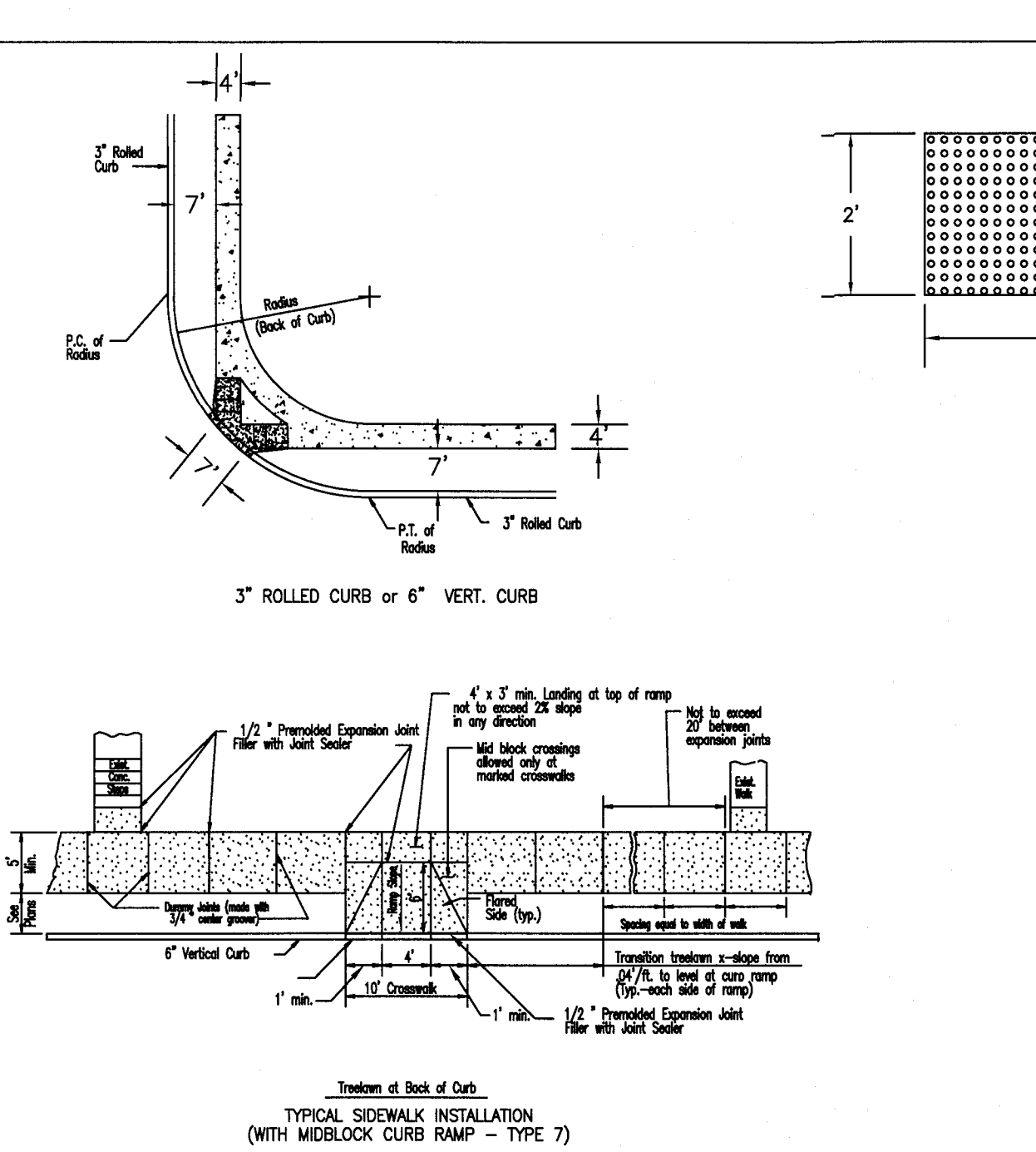
CITY OF O'FALLON
 ENGINEERING DEPARTMENT
 O'FALLON, MISSOURI



GENERAL NOTES

- Do not scale drawing. Follow dimensions.
- Sidewalk and sidewalk curb ramps shall be constructed in accordance with these details and the current approved Americans with Disabilities Act Accessibility Guidelines (ADAAG).
- Minimum sidewalk width along 6" vertical curb shall be 5 feet. Minimum sidewalk width along 3" rolled curb shall be 4 feet.
- Maximum sidewalk cross slope 0.02%/ft.
- All sidewalk sections shall be 4" thick, except where indicated by a note. All sidewalks shall be constructed in accordance with these details and the current approved Americans with Disabilities Act Accessibility Guidelines (ADAAG).
- Where curb ramp meets pavement, bullnose will not be permitted.
- If integral concrete curb is constructed, strike a dummy joint across bottom of ramp at curb line. If a concrete curb is dropped-on, back to pavement to provide full depth curb across ramp from outer point of curb taper to outer point of curb taper.
- For pavement longitudinal and transverse joints and dowel and tie bar requirements and dimensions, refer to the Pavement Construction Details for "Sidewalk and Curb".
- For roadway cross slopes, pavement types, and thickness, refer to Standard Typical Sections.
- The intersection of two sidewalks or the intersection of a sidewalk and a driveway ramp shall be a wheelchair passing space on sidewalks less than 5 feet wide.
- All curb ramps shall have a detectable warning complying with Americans with Disabilities Act Accessibility Guidelines (ADAAG).

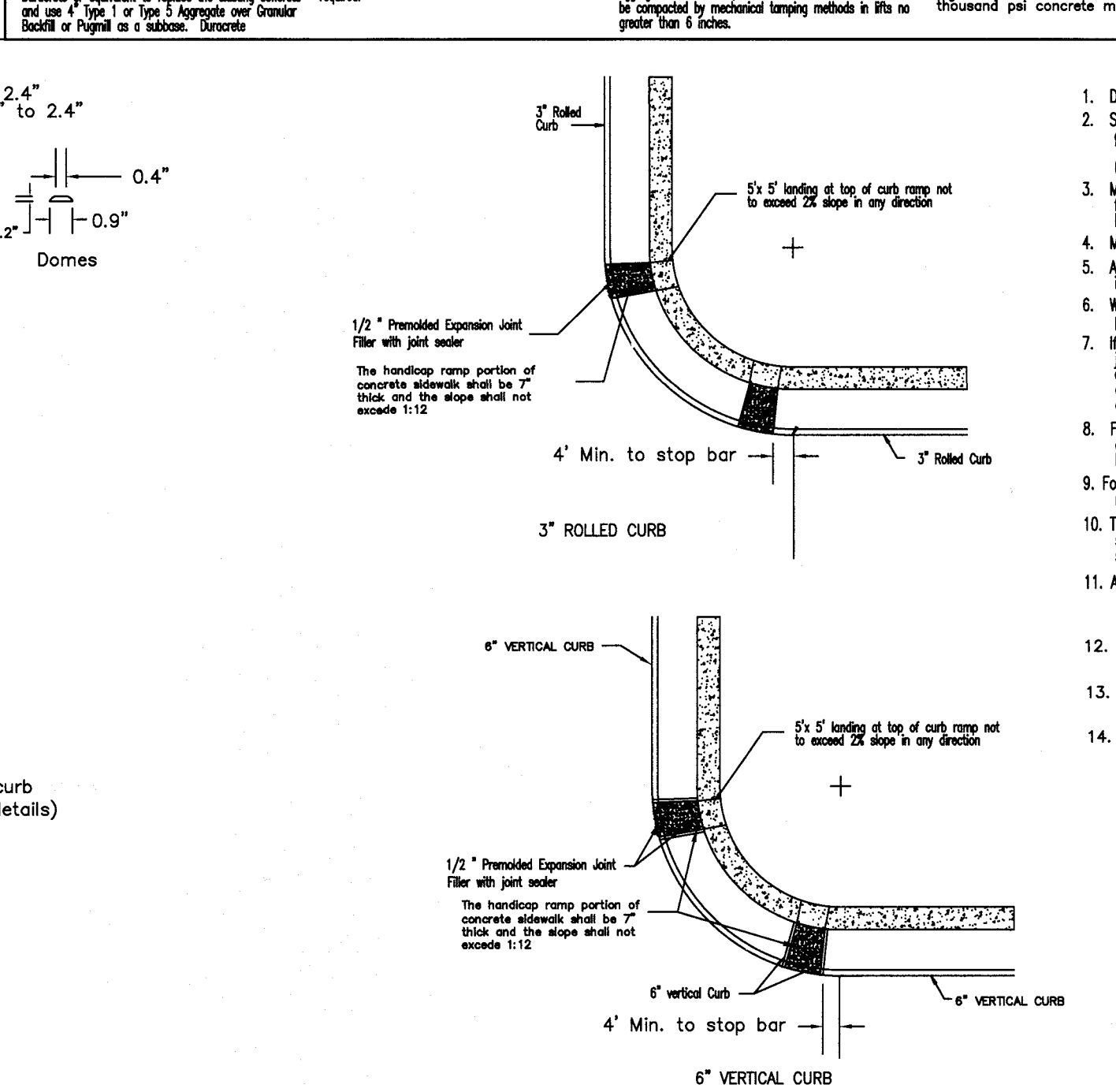
CITY OF O'FALLON
 ENGINEERING DEPARTMENT
 O'FALLON, MISSOURI



GENERAL NOTES

- If a permit is issued to replace the existing asphalt concrete pavement with full depth bituminous concrete pavement and concrete pavement is found under the existing asphalt concrete pavement, the contractor will be required to follow the Detail for Bituminous Concrete over Concrete Pavement. All interstates, expressways, and all other roads or equipment to replace the existing concrete and use of Type 1 or Type 5 Aggregate over Concrete Base Course is required.
- Bituminous Concrete over Concrete Pavement or Concrete Pavement is broken before spreading the concrete. All interstates, expressways, and all other roads or equipment to replace the existing concrete and use of Type 1 or Type 5 Aggregate over Concrete Base Course is required.

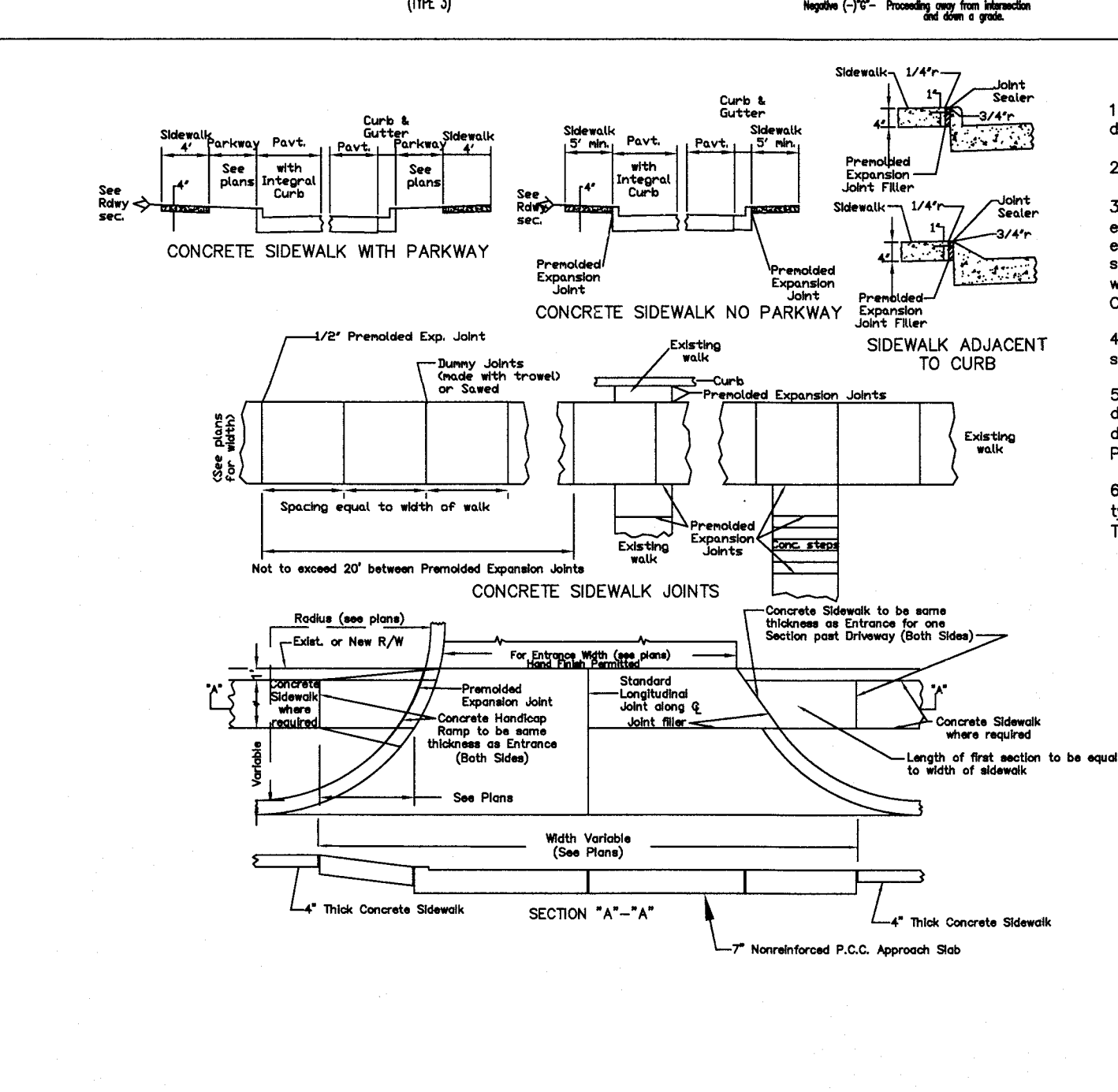
CITY OF O'FALLON
 ENGINEERING DEPARTMENT
 O'FALLON, MISSOURI



GENERAL NOTES

- Do not scale drawing. Follow dimensions.
- Sidewalk and sidewalk curb ramps shall be constructed in accordance with these details and the current approved Americans with Disabilities Act Accessibility Guidelines (ADAAG).
- Minimum sidewalk width along 6" vertical curb shall be 5 feet. Minimum sidewalk width along 3" rolled curb shall be 4 feet.
- Maximum sidewalk cross slope 0.02%/ft.
- All sidewalk sections shall be 4" thick, except where indicated by a note. All sidewalks shall be constructed in accordance with these details and the current approved Americans with Disabilities Act Accessibility Guidelines (ADAAG).
- Where curb ramp meets pavement, bullnose will not be permitted.
- If integral concrete curb is constructed, strike a dummy joint across bottom of ramp at curb line. If a concrete curb is dropped-on, back to pavement to provide full depth curb across ramp from outer point of curb taper to outer point of curb taper.
- For pavement longitudinal and transverse joints and dowel and tie bar requirements and dimensions, refer to the Pavement Construction Details for "Sidewalk and Curb".
- For roadway cross slopes, pavement types, and thickness, refer to Standard Typical Sections.
- The intersection of two sidewalks or the intersection of a sidewalk and a driveway ramp shall be a wheelchair passing space on sidewalks less than 5 feet wide.
- All curb ramps shall have a detectable warning complying with Americans with Disabilities Act Accessibility Guidelines (ADAAG).
- All ramps must line up with the corresponding parking on the other side of the street or intersection.
- All truncated domes shall run parallel to the road that it's crossing.
- Truncated warning domes shall not be stamped and will be a ADA approved product.

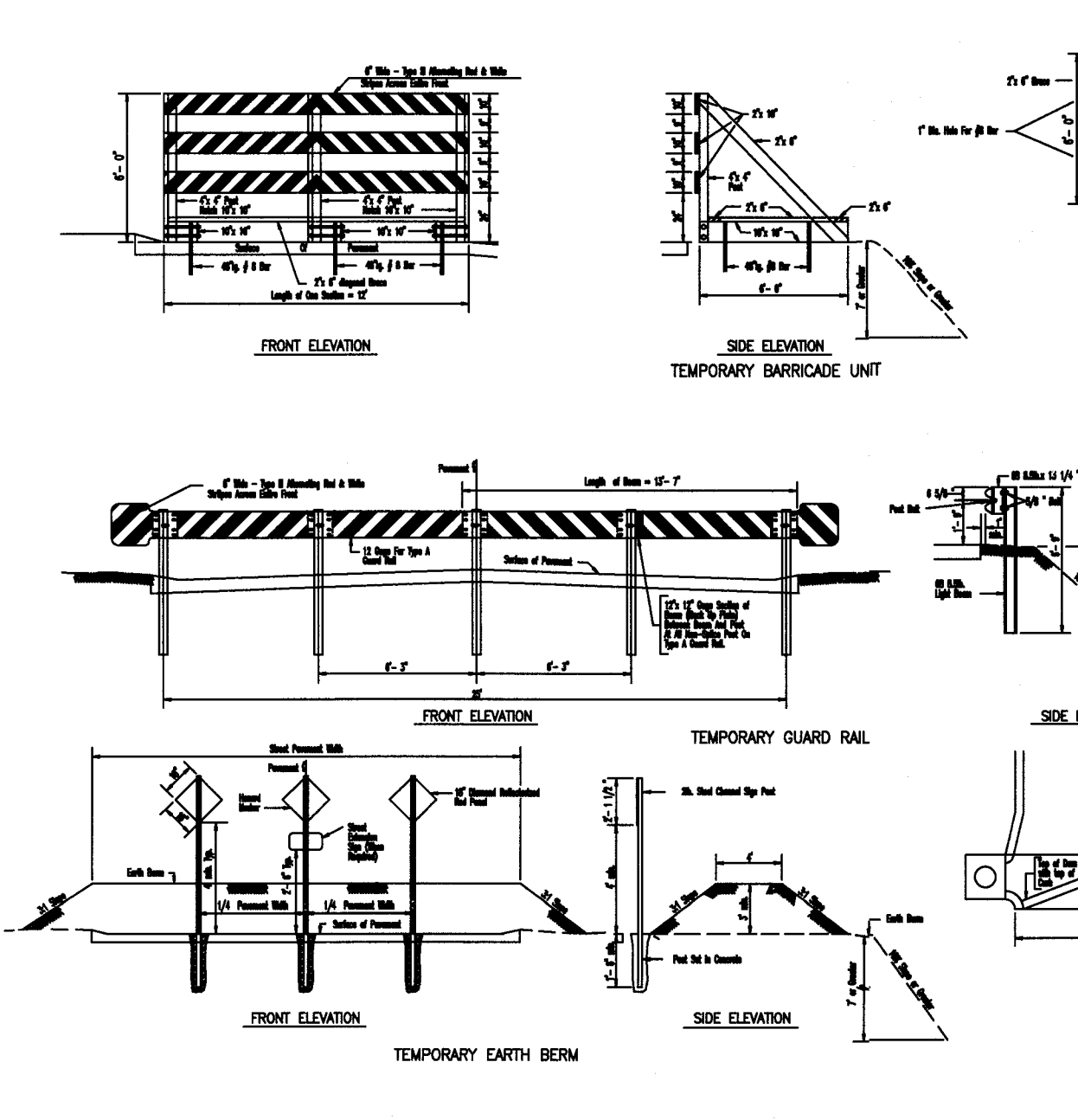
CITY OF O'FALLON
 ENGINEERING DEPARTMENT
 O'FALLON, MISSOURI



GENERAL NOTES

- Do not scale drawing. Follow dimensions.
- Sidewalk cross slope 0.02%/ft.
- Sidewalk thickness increases to 6" on each side of Private Driveways and 7" on each side of Commercial Driveways for one section of sidewalk equal in length to the width of the sidewalk. See "Entrance Construction Details".
- For sidewalk locations on Cui-De-Sacs see "Pavement Construction Details".
- For longitudinal and transverse joints, dowel, and tie bar requirements and dimensions refer to the "Truncated Curb Pavement Typical Sections and Details".
- For roadway cross slopes, pavement types, and thickness, refer to Standard Typical Section".

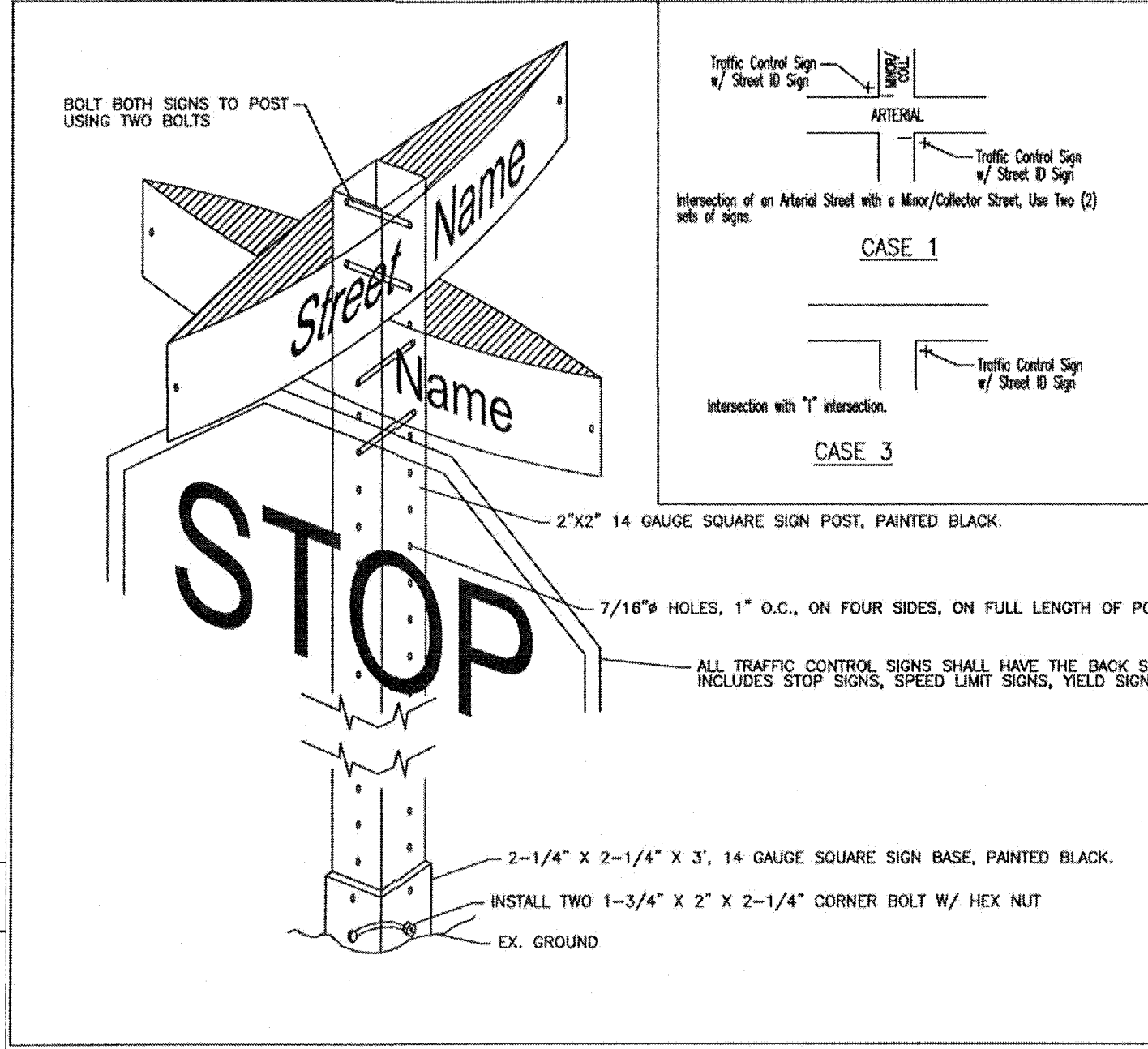
CITY OF O'FALLON
 ENGINEERING DEPARTMENT
 O'FALLON, MISSOURI



GENERAL NOTES

- Temporary Barricades may be required at any hazard as directed by the City Engineer.
- End of Roadway Markers are required at the termination of all pavement unless otherwise directed by the City Engineer.
- Temporary Dams are to be used with all termination conditions when storm water inlets are installed.
- All paint stripes shall conform to Saint Charles County Specification for Reflective Paint.
- The contractor shall be responsible for verification of underground utilities and structures shown and not shown prior to the placement of sign and guardrail posts.
- Street Extension Signs shall be 12" x 18" with green background and white reflective letters reading "This street to be extended as part of future development".

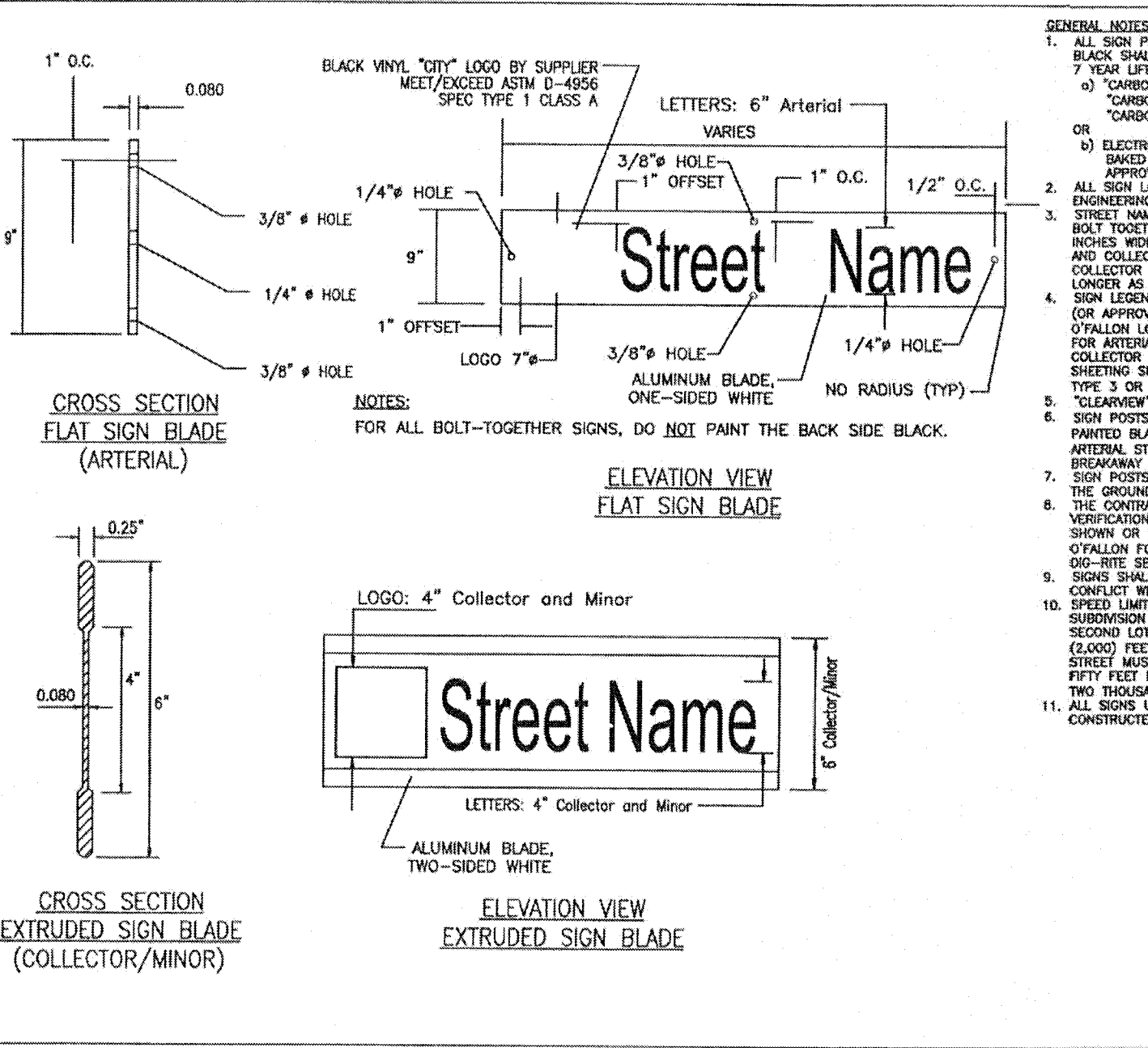
CITY OF O'FALLON
 ENGINEERING DEPARTMENT
 O'FALLON, MISSOURI



GENERAL NOTES

- TRAFFIC CONTROL SIGNS SHALL HAVE THE BACK SIDES PAINTED BLACK. INCLUDES STOP SIGNS, SPEED LIMIT SIGNS, YIELD SIGNS, NO PARKING SIGNS, ETC.

CITY OF O'FALLON
 ENGINEERING DEPARTMENT
 O'FALLON, MISSOURI



GENERAL NOTES

- ALL SIGN POSTS AND BACKS OF SIGNS THAT ARE TO BE PAINTED BLACK SHALL USE A PAINT SYSTEM THAT PROVIDES A MINIMUM 7 YEAR LIFE EXPECTANCY. MAY USE:
 - 1) "CORONA" RUSTPROOF BASE AT 1-2 MILS THICK, "CORONA" 803 50" MID-LAYER AT 3-5 MILS THICK, "CORONA" 133 100" TOP COAT OR APPROVED EQUAL.
 - 2) ELECTROSTATIC APPLIED, BLACK POWDER COATED AND BASED ON PAINT SYSTEM AT 2-3 MILS THICKNESS OR APPROVED EQUAL.
- ALL SIGN LOCATIONS AND SIZES MUST BE APPROVED BY THE ENGINEERING DEPARTMENT PRIOR TO INSTALLATION.
- STREET NAME SIGN PLATES SHALL BE 1/8" THICK FLAT, BOLT TOGETHER FOR ANY ARTERIAL INTERSECTIONS AND ALL MINOR AND COLLECTOR ROADS. TYPICAL LENGTHS FOR MINOR AND COLLECTOR SIGNS SHALL BE 24", 30" OR 36" IN LENGTH, OR LONGER AS NEEDED, TO ACCOMMODATE STREET NAME.
- STREET SIGNS SHALL BE HIGH VISIBILITY (2 LUMINOUS) PAINTED BLACK STEEL POSTS FOR COLLECTOR/MINOR SIGNS. ARTERIAL SIGNS SHALL HAVE 2" SQUARE POSTS WITH SIGNMOUNT ACCESSORIES.
- STREET SIGNS SHALL BE A MINIMUM OF 30 INCHES INTO THE GROUND AND PLUMB.
- THE CONTRACTOR SHALL BE RESPONSIBLE FOR THE VERIFICATION OF ALL UNDERGROUND UTILITIES AND STRUCTURES SHOWN OR NOT SHOWN. PLEASE CONTACT THE CITY OF O'FALLON FOR LOCATION OF CITY UTILITIES NOT FOUND BY SIGN-SET SERVICES.
- SIGNS SHALL NOT CREATE A SIGHT DISTANCE PROBLEM OR CONFLICT WITH MINIMUM TRAVEL SPEEDS.
- SPEED LIMIT SIGNS MUST BE AT EVERY ENTRANCE TO A SUBDIVISION ALONG THE LINE BETWEEN THE FIRST AND SECOND LOT AND APPROXIMATELY EVERY TWO THOUSAND FEET THERE AFTER. ALSO, SPEED LIMIT SIGNS MUST BE AT EVERY ENTRANCE TO A SUBDIVISION ALONG THE LINE BETWEEN THE FIRST AND SECOND LOT AND APPROXIMATELY EVERY TWO THOUSAND FEET THERE AFTER.
- SIGNS UNLESS OTHERWISE SPECIFIED SHOULD BE CONSTRUCTED AND INSTALLED PER MUTCD.

CITY OF O'FALLON
 ENGINEERING DEPARTMENT
 O'FALLON, MISSOURI

CONCRETE NOTE:
 ALL NON-REINFORCED CONCRETE SHALL BE 4,000 PSI AT 28 DAYS