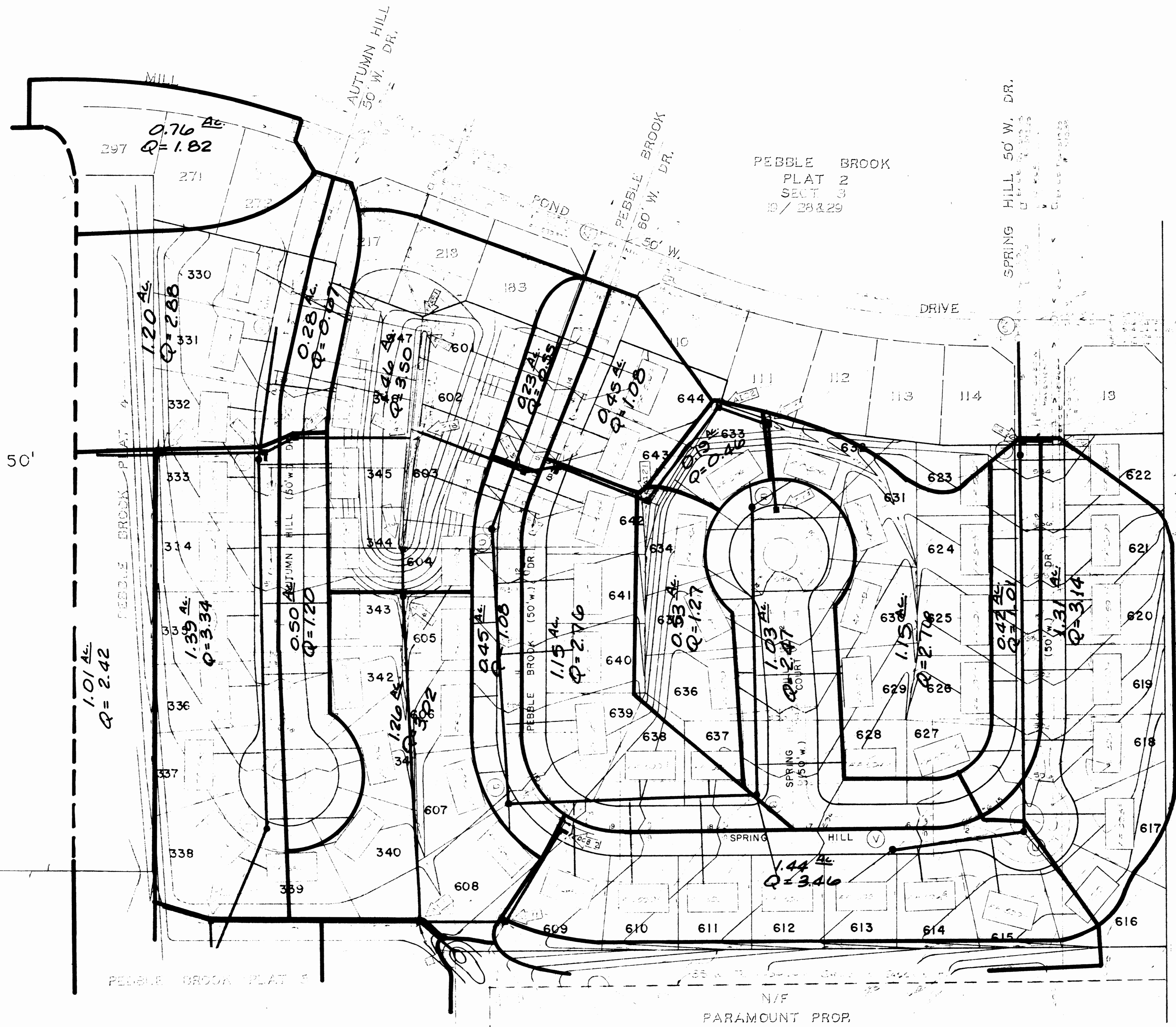
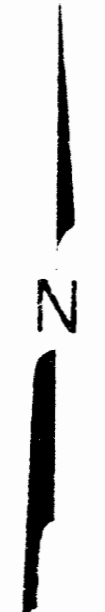


SCALE: 1" = 50'



BENCHMARK:

RM68 L CHISEL ON SOUTH END OF WEST HEADWALL OF STATE HIGHWAY K BRIDGE OVER BELLEAU CREEK.

ELEVATION 509.47

T.B.M. "O" IN OPEN ON FIRE HYDRANT 100' SOUTH OF MILLPOND DRIVE ON WINTER HILL DRIVE

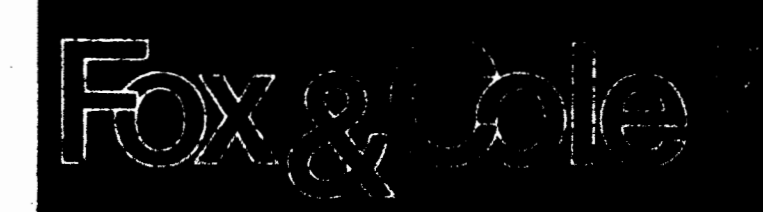
ELEVATION 587.10

ALL UTILITIES EITHER SHOWN OR NOT SHOWN HAVE BEEN LOCATED BY THE ENGINEER FROM AVAILABLE RECORDS. THEIR LOCATIONS SHOULD BE CONSIDERED APPROXIMATE. THE CONTRACTOR HAS THE RESPONSIBILITY TO NOTIFY ALL UTILITY COMPANIES, PRIOR TO CONSTRUCTION, TO HAVE EXISTING UTILITIES FIELD LOCATED.

GENERAL NOTES:

- + = STREET NAME SIGNS
- ⊕ = 1' HIGH EARTH BERRY

**DRAINAGE AREA MAP
PEBBLE BROOK**



Drawn By LRP	Checked By EKP	Project Number 1027	Sheet Number 9 OF 18
Date 12-16-80			
Revisions			