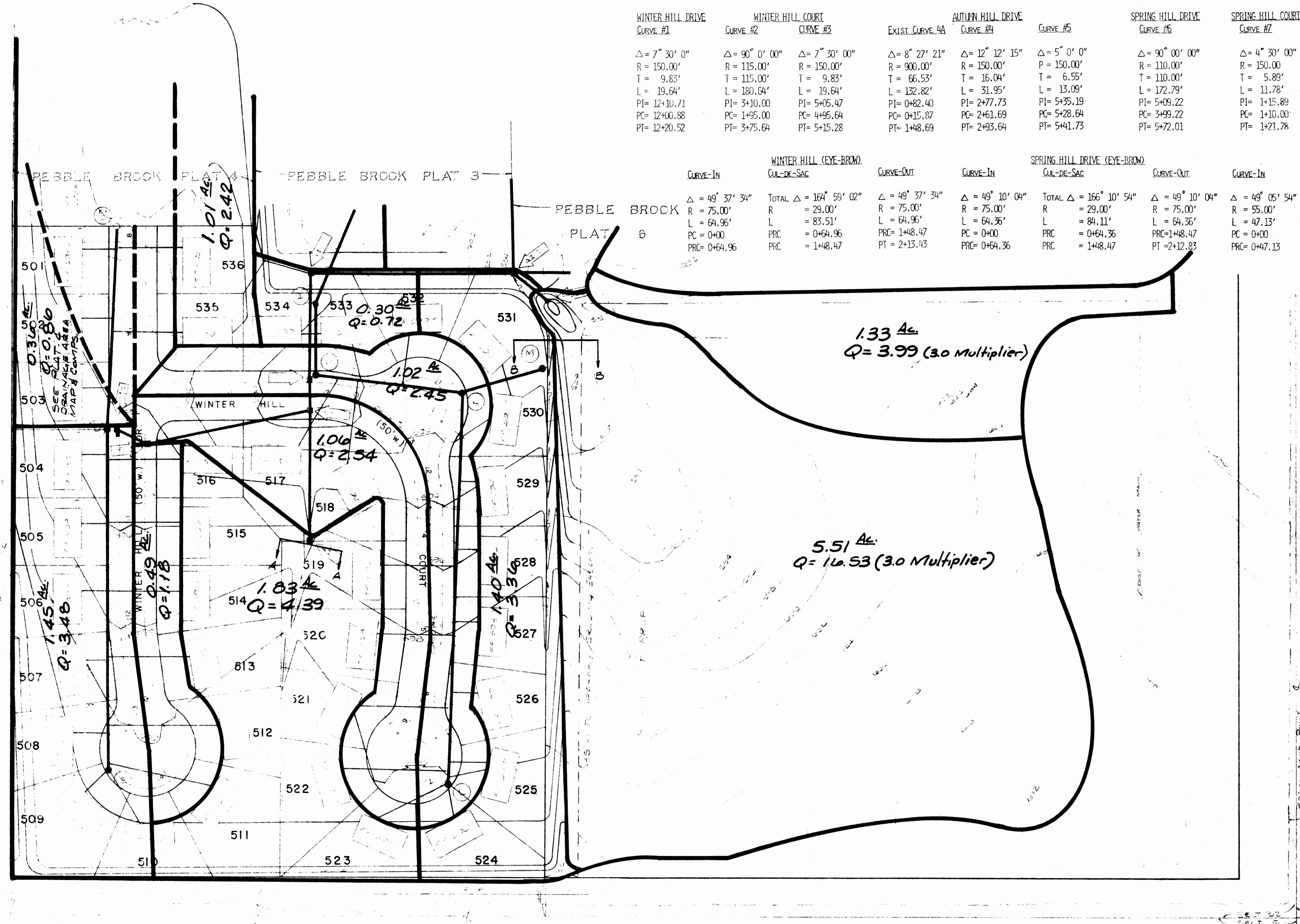


WINTER HILL DRIVE CURVE #1	WINTER HILL COURT CURVE #2	WINTER HILL COURT CURVE #3	EXIST. CURVE 4A	AUTUMN HILL DRIVE CURVE #4	CURVE #5	SPRING HILL DRIVE CURVE #6	SPRING HILL COURT CURVE #7	PEBBLE BROOK DRIVE CURVE #8	PEBBLE BROOK DRIVE CURVE #9
$\Delta = 7^{\circ} 30' 00''$	$\Delta = 90^{\circ} 0' 00''$	$\Delta = 7^{\circ} 30' 00''$	$\Delta = 8^{\circ} 27' 21''$	$\Delta = 12^{\circ} 12' 15''$	$\Delta = 5^{\circ} 0' 0''$	$\Delta = 90^{\circ} 00' 00''$	$\Delta = 4^{\circ} 30' 00''$	$\Delta = 90^{\circ} 21' 09''$	$\Delta = 20^{\circ} 39' 36''$
R = 150.00'	R = 115.00'	R = 150.00'	R = 900.00'	R = 150.00'	P = 150.00'	R = 110.00'	R = 150.00'	R = 100.00'	R = 150.00'
T = 9.83'	T = 115.00'	T = 9.83'	T = 66.53'	T = 16.04'	T = 6.55'	T = 110.00'	T = 5.89'	T = 100.62'	T = 27.34'
L = 19.64'	L = 180.64'	L = 19.64'	L = 132.82'	L = 31.95'	L = 13.09'	L = 172.79'	L = 11.78'	L = 157.70'	L = 54.08'
PI = 12+10.71	PI = 3+10.00	PI = 5+05.47	PI = 0+82.40	PI = 2+77.73	PI = 5+35.19	PI = 5+09.22	PI = 1+15.89	PI = 9+89.15	PI = 12+58.80
PC = 12+00.88	PC = 1+95.00	PC = 4+95.64	PC = 0+15.87	PC = 2+61.69	PC = 5+28.64	PC = 3+99.22	PC = 1+10.00	PC = 8+88.53	PC = 12+51.46
PT = 12+20.52	PT = 3+75.64	PT = 5+15.28	PT = 1+48.69	PT = 2+93.64	PT = 5+41.73	PT = 5+72.01	PT = 1+21.78	PT = 10+46.23	PT = 12+85.55

CURVE-IN	WINTER HILL (EYE-BROW) CUL-DE-SAC	CURVE-OUT	CURVE-IN	SPRING HILL DRIVE (EYE-BROW) CUL-DE-SAC	CURVE-OUT	CURVE-IN	TYPICAL CUL-DE-SAC	CURVE-OUT
$\Delta = 49^{\circ} 37' 34''$	TOTAL $\Delta = 164^{\circ} 59' 02''$	$\Delta = 49^{\circ} 37' 34''$	$\Delta = 49^{\circ} 10' 04''$	TOTAL $\Delta = 166^{\circ} 10' 54''$	$\Delta = 49^{\circ} 10' 04''$	$\Delta = 49^{\circ} 05' 54''$	TOTAL $\Delta = 278^{\circ} 11' 50''$	$\Delta = 49^{\circ} 05' 54''$
R = 75.00'	R = 29.00'	R = 75.00'	R = 75.00'	R = 29.00'	R = 75.00'	R = 55.00'	R = 29.00'	R = 55.00'
L = 64.96'	L = 83.51'	L = 64.96'	L = 64.36'	L = 84.11'	L = 64.36'	L = 47.13'	L = 140.81'	L = 47.13'
PC = 0+00	PRC = 0+64.96	PRC = 1+48.47	PC = 0+00	PRC = 0+64.36	PRC = 1+48.47	PC = 0+00	PRC = 0+47.13	PRC = 1+87.94
PT = 2+13.43	PT = 1+48.47	PT = 2+13.43	PT = 0+64.36	PT = 1+48.47	PT = 2+12.83	PT = 0+47.13	PT = 1+87.94	PT = 2+35.07



SECTION A-A

ACTUAL Q = 4.39

GIVEN $n = 0.035$
 $W = 0$ (V" DITCH)
 $H = 0.50'$
 $S = 0.027$
 Solve for: $Q = 5.13$
 $V = 2.74$

SECTION B-B

ACTUAL Q = 3.36

GIVEN $n = 0.035$
 $W = 0$ (V" DITCH)
 $H = 0.40'$
 $S = 0.04$
 Solve for: $Q = 4.63$
 $V = 2.89$

DRAINAGE AREA MAP
PEBBLE BROOK

Fox & Cole Planning, Civil Engineering, Surveying

1245 Spring Hill Road West
 Suite 200, Springfield, Missouri 65806
 Telephone: (417) 541-1049
 Fax: (417) 541-1055

Drawn By LRP	Checked By EKF	Project Number 1027	Sheet Number 10 OF 18
Date 12-16-00	Revisions		