

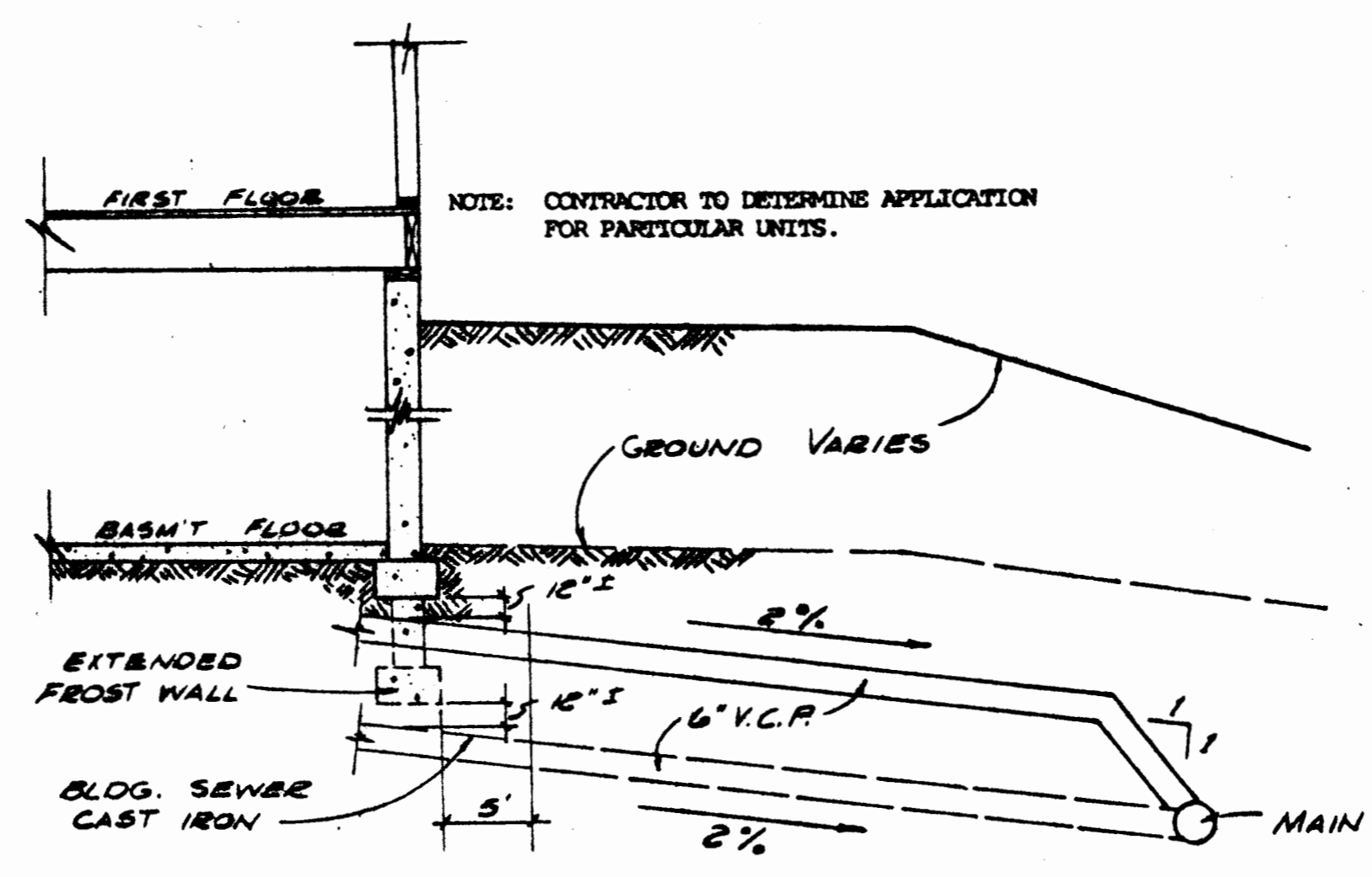
GENERAL NOTES

- Do not scale drawing. Follow dimensions.
- Sections are symmetrical about construction centerline.
- For longitudinal and transverse joints, detail and bar requirements and curb dimensions refer to the Pavement Construction Details for Integral Curb and Concrete Pavement.
- As shown, pavement thicknesses are 4" for concrete and 2" for asphalt concrete.
- Sections shown may not apply at intersections.
- Profile Grade elevations shown do not apply to typical building and "E" elevations.
- All "E" elevations must be used together.
- Subsoil thickness increases to 6" for Private Driveways and 7" for Commercial Driveways. See Entrance Construction Details.
- Excavation when required shall be indicated by hatching, dimension and finished to ST. JOHNS' CO. COUNTY, MO.

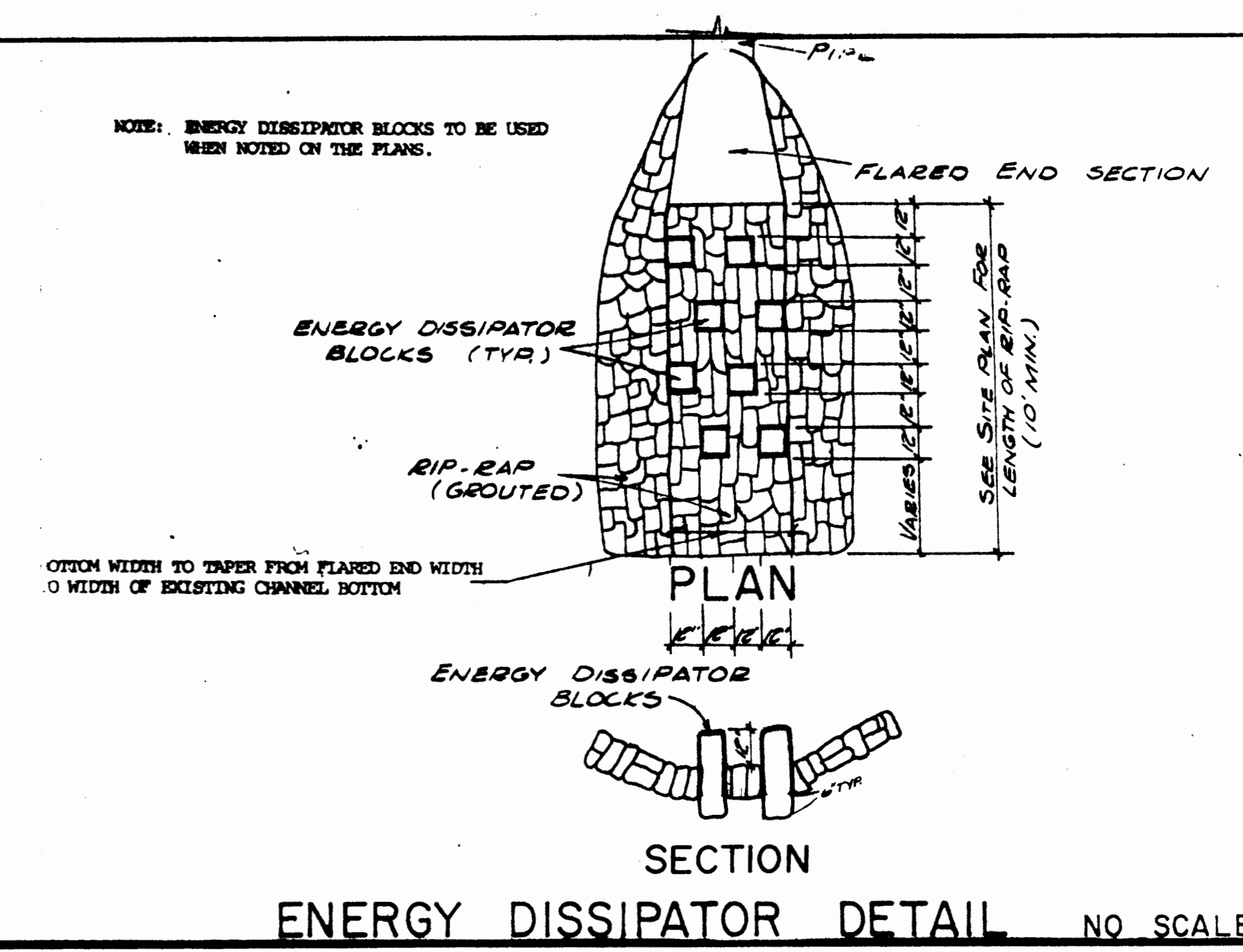
STANDARD TYPICAL SECTION
MINOR RURAL OR URBAN
(PARKING RESTRICTED)

APPROVED: DIRECTOR

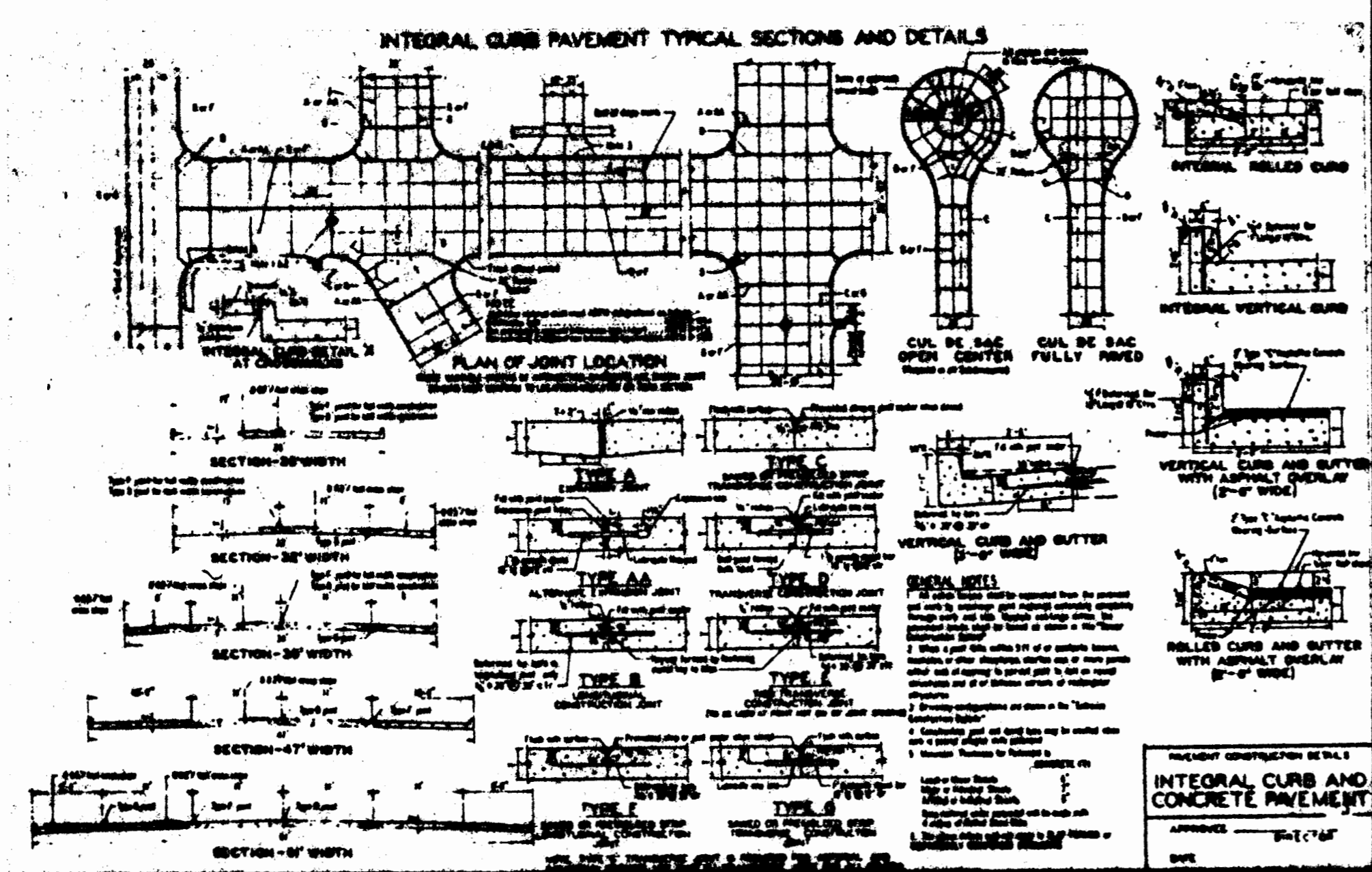
DATE:



HOUSE CONNECTION DETAIL NO SCALE



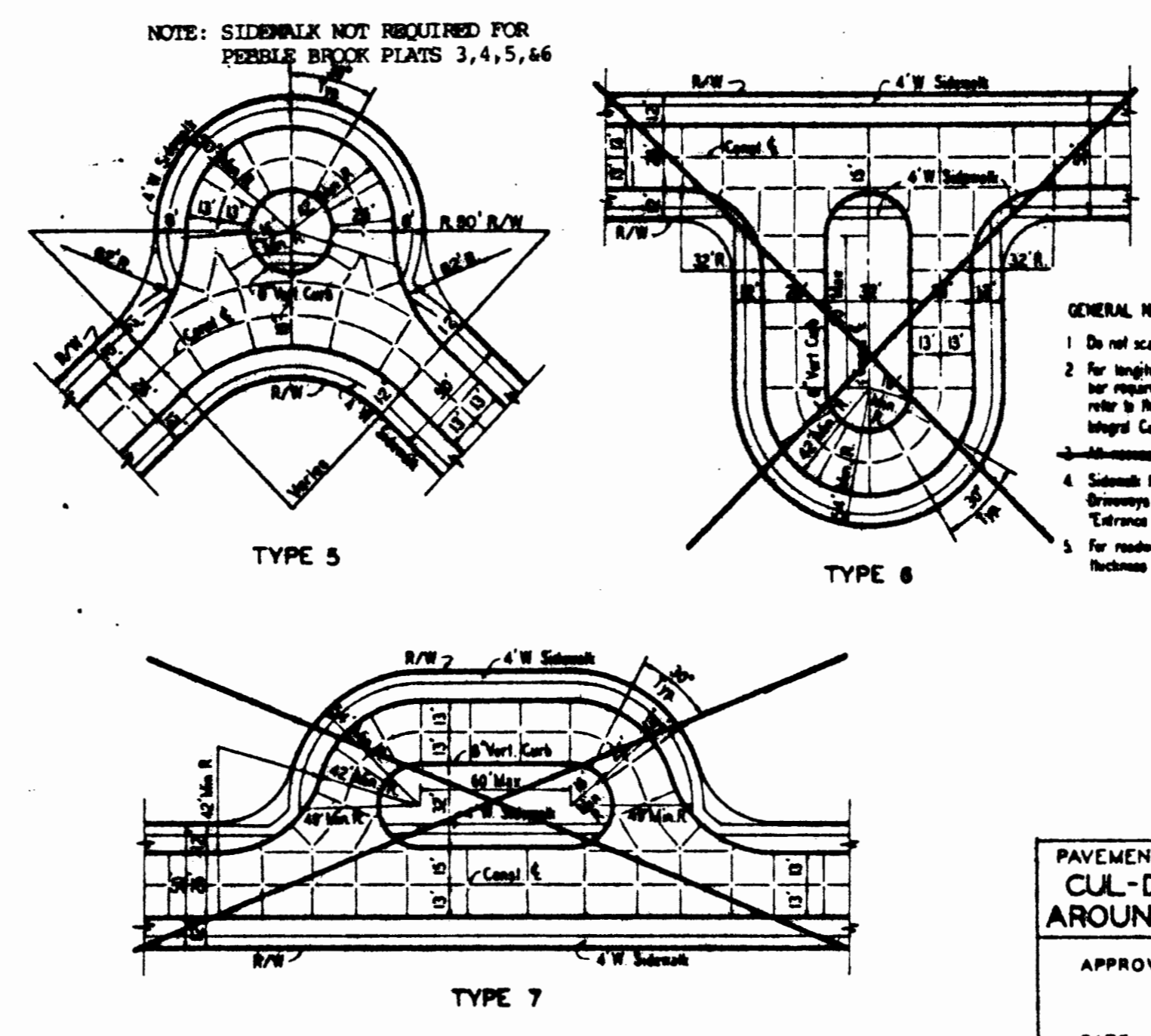
ENERGY DISSIPATOR DETAIL NO SCALE



INTEGRAL CURB AND CONCRETE PAVEMENT

APPROVED: DIRECTOR

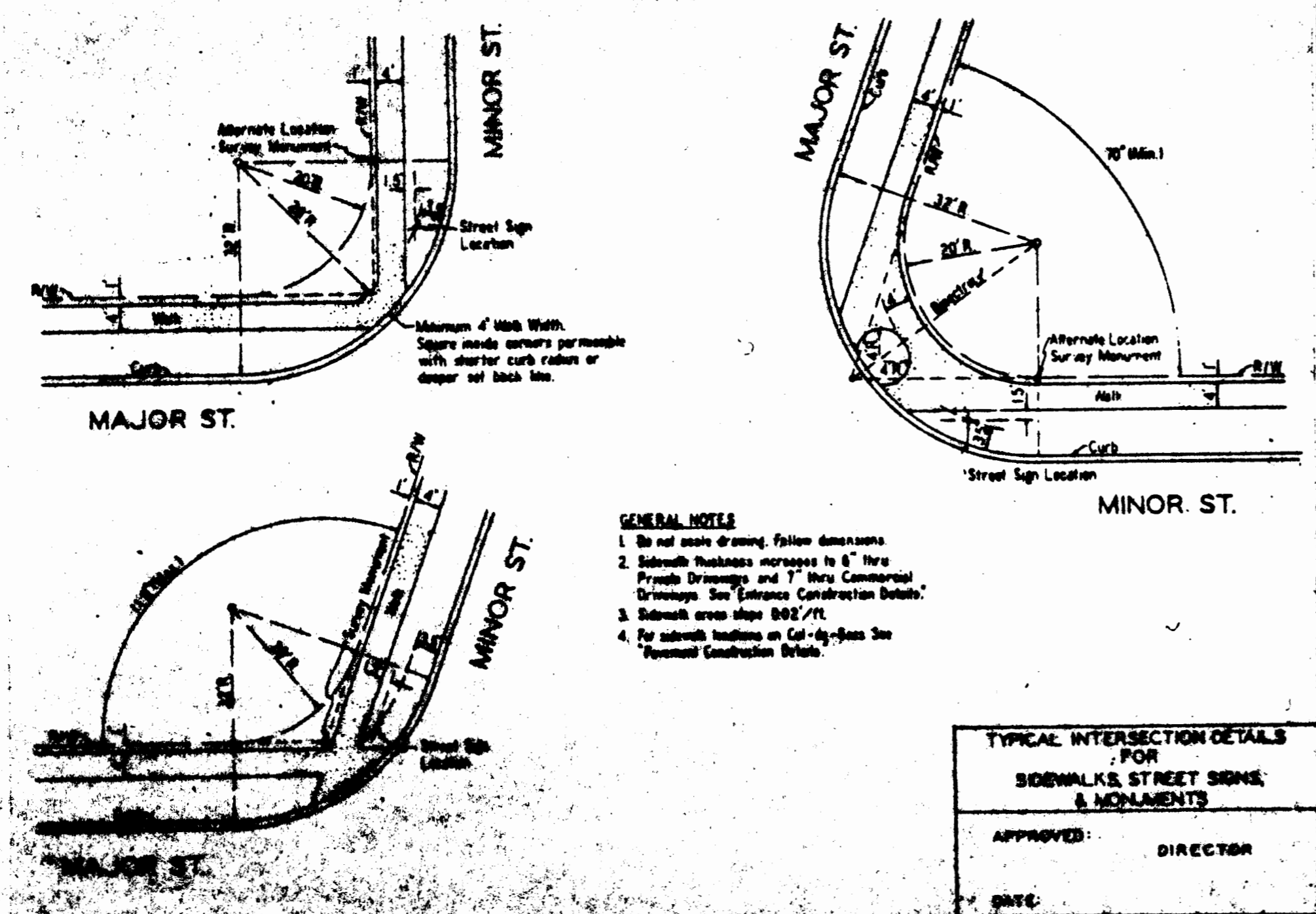
DATE:



PAVEMENT CONSTRUCTION DETAILS
CUL-DE-SAC AND TURN
AROUND CONFIGURATIONS

APPROVED: DIRECTOR

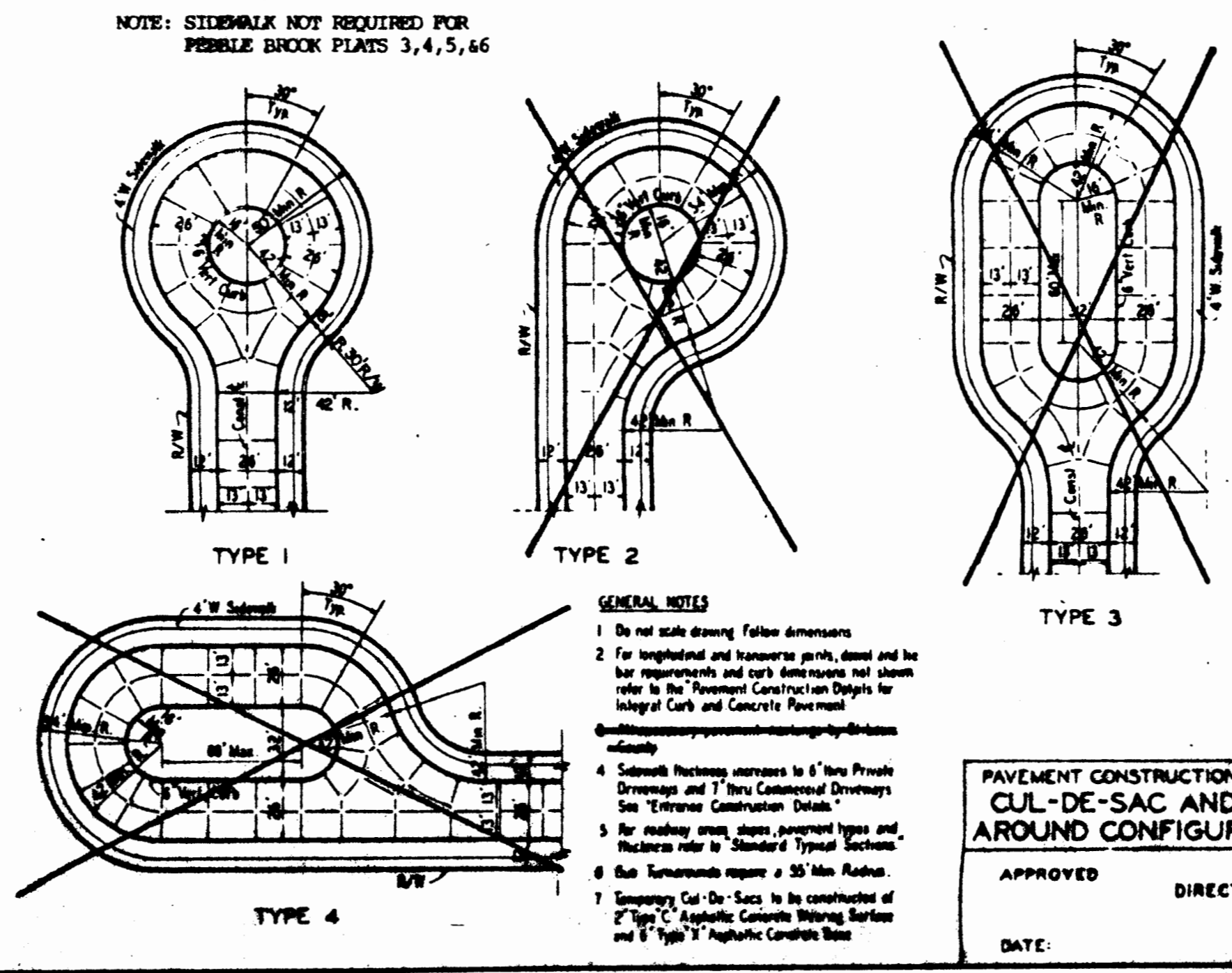
DATE:



TYPICAL INTERSECTION DETAILS
FOR
SIDEWALKS, STREET SIGNS
& MONUMENTS

APPROVED: DIRECTOR

DATE:



PAVEMENT CONSTRUCTION DETAILS
CUL-DE-SAC AND TURN
AROUND CONFIGURATIONS

APPROVED: DIRECTOR

DATE:

DETAILS			
PEBBLE BROOK			
		Project Number	Sheet Number
		1027	16 OF 18
Drawn By	Checked By	Date	
LRP	MTL	12-16-80	
Revisions		3/1/81 COUNTY HWY.	