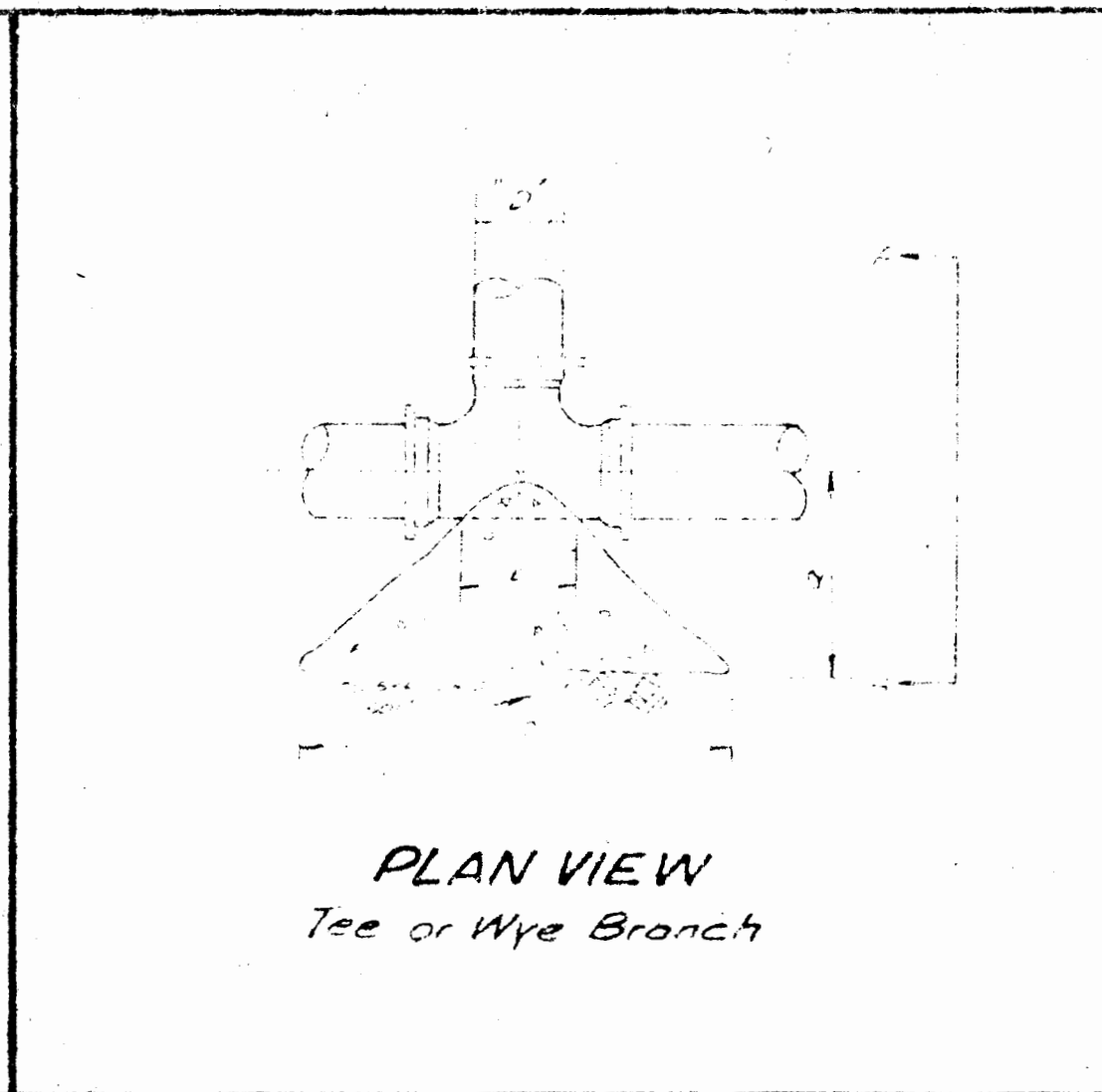
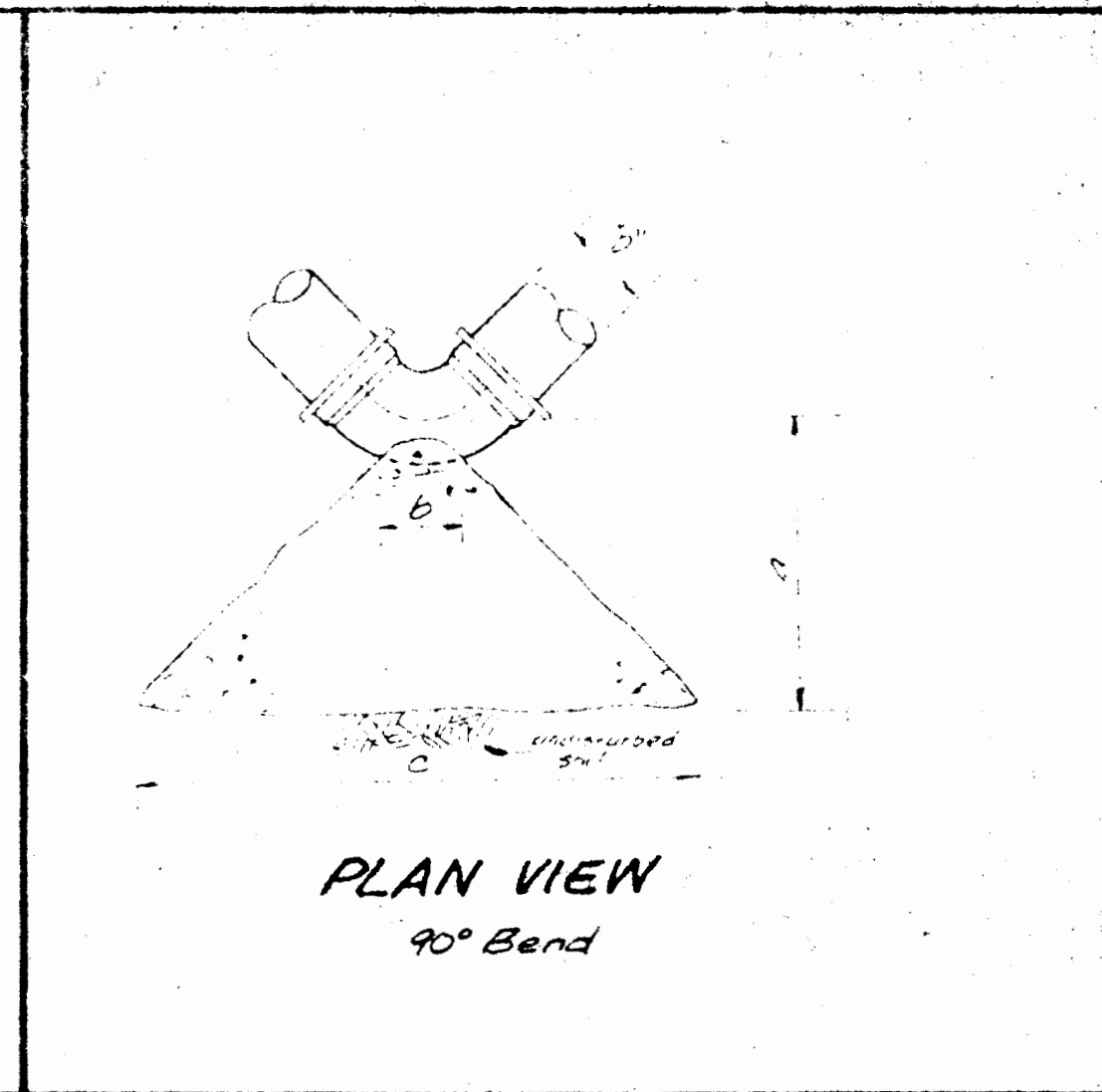


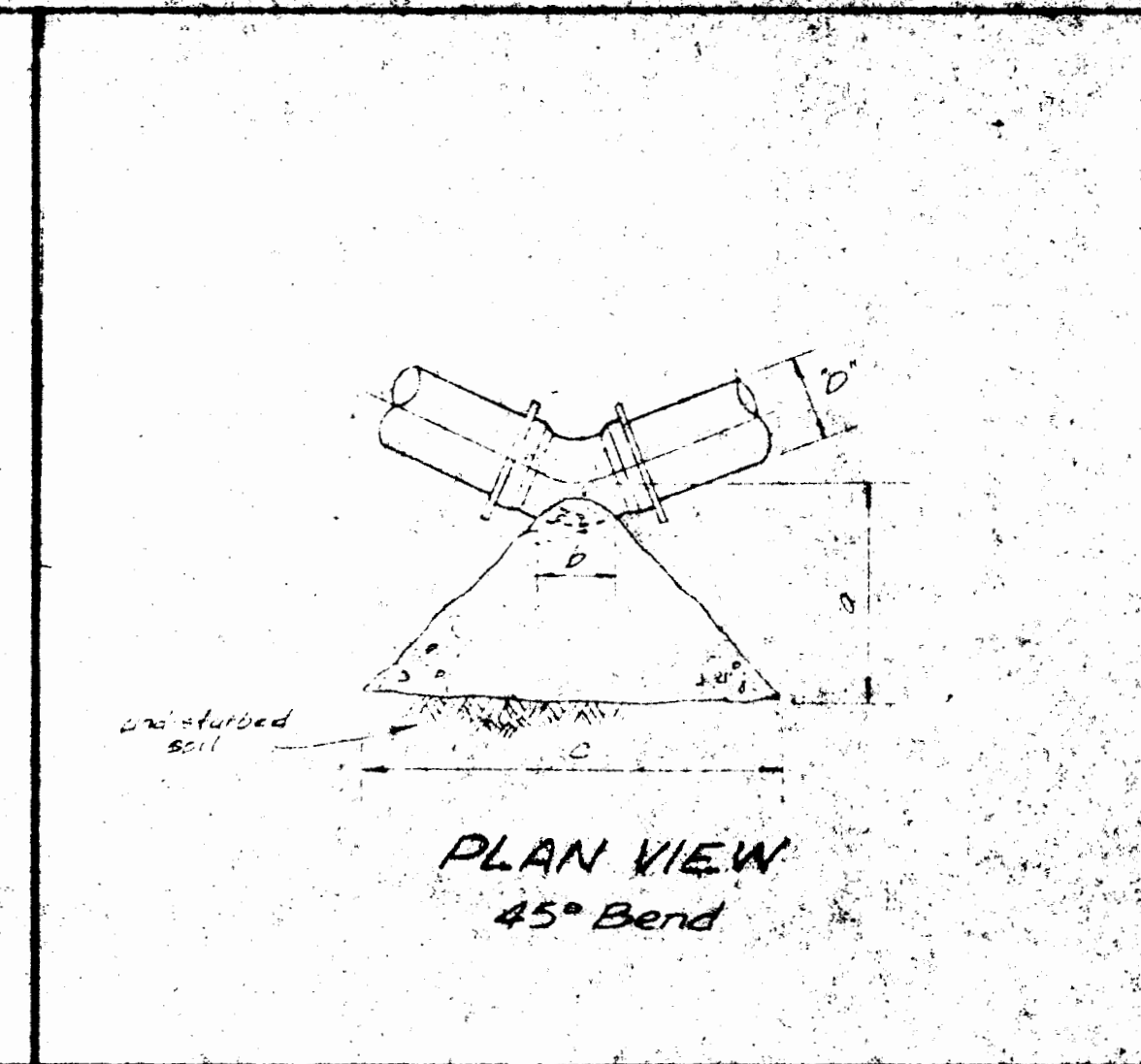
SECTION A-A
Typical for all thrust
blocks except as noted



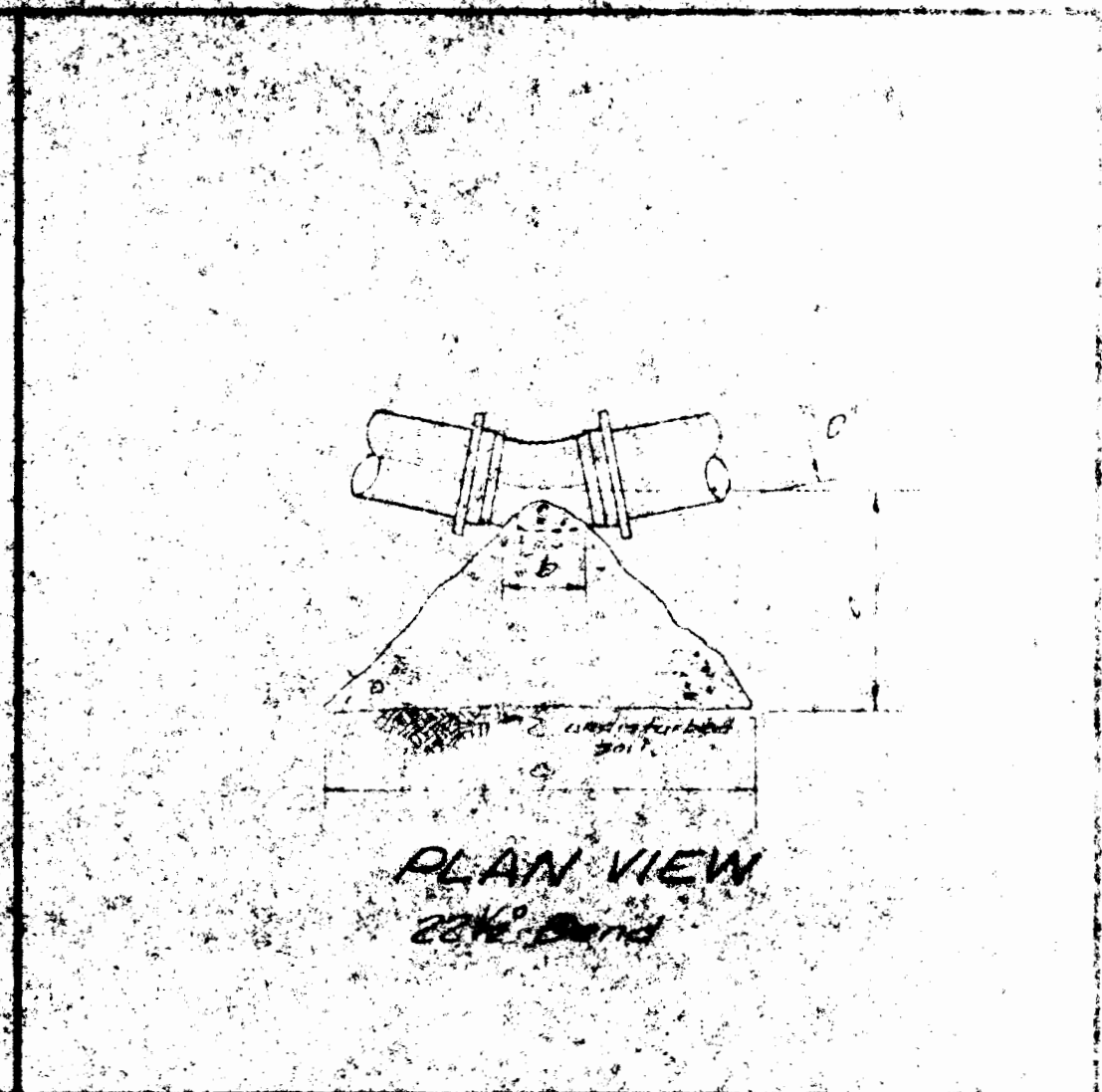
PLAN VIEW
Tee or Wye Branch



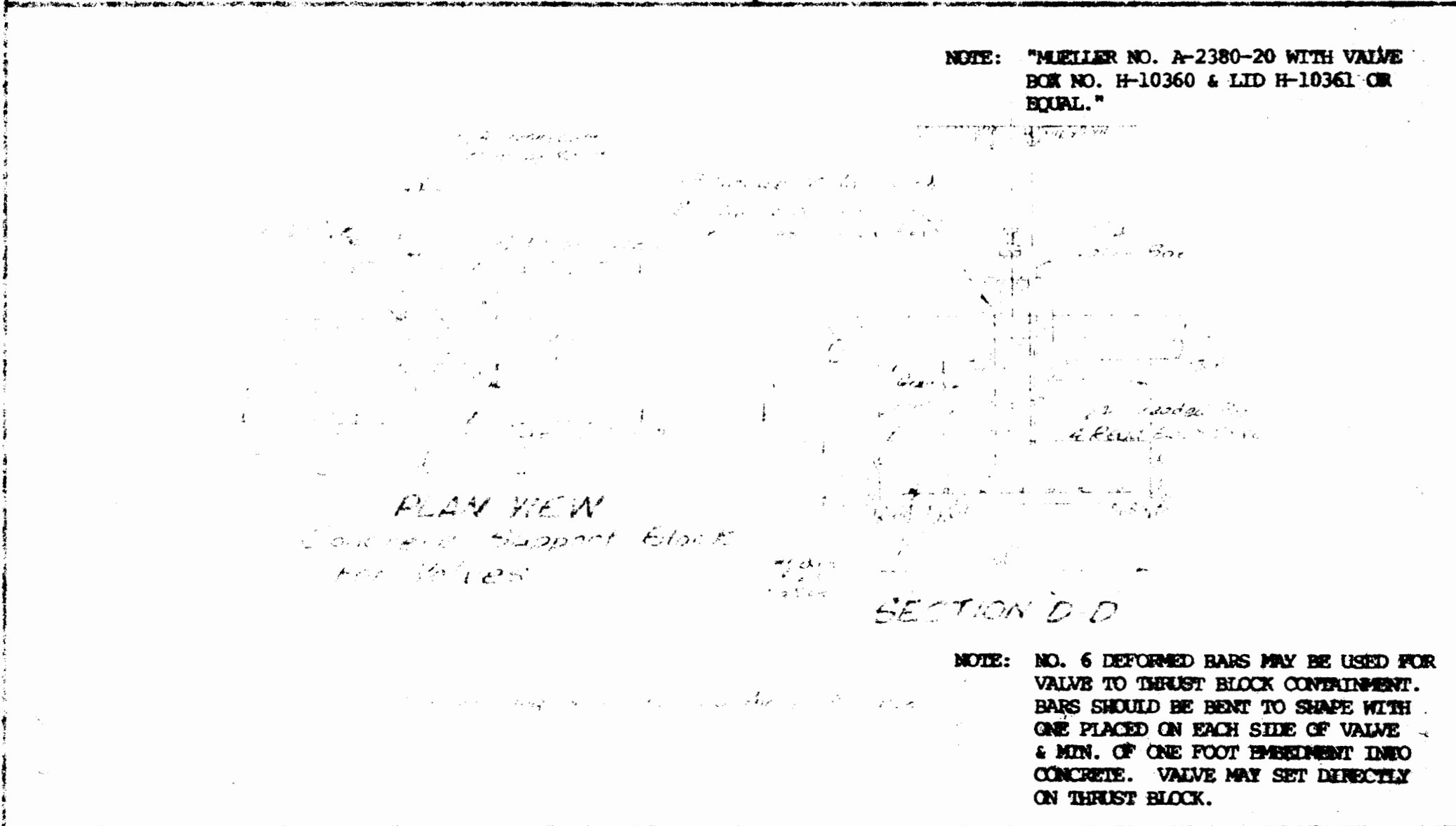
PLAN VIEW
90° Bend



PLAN VIEW
45° Bend



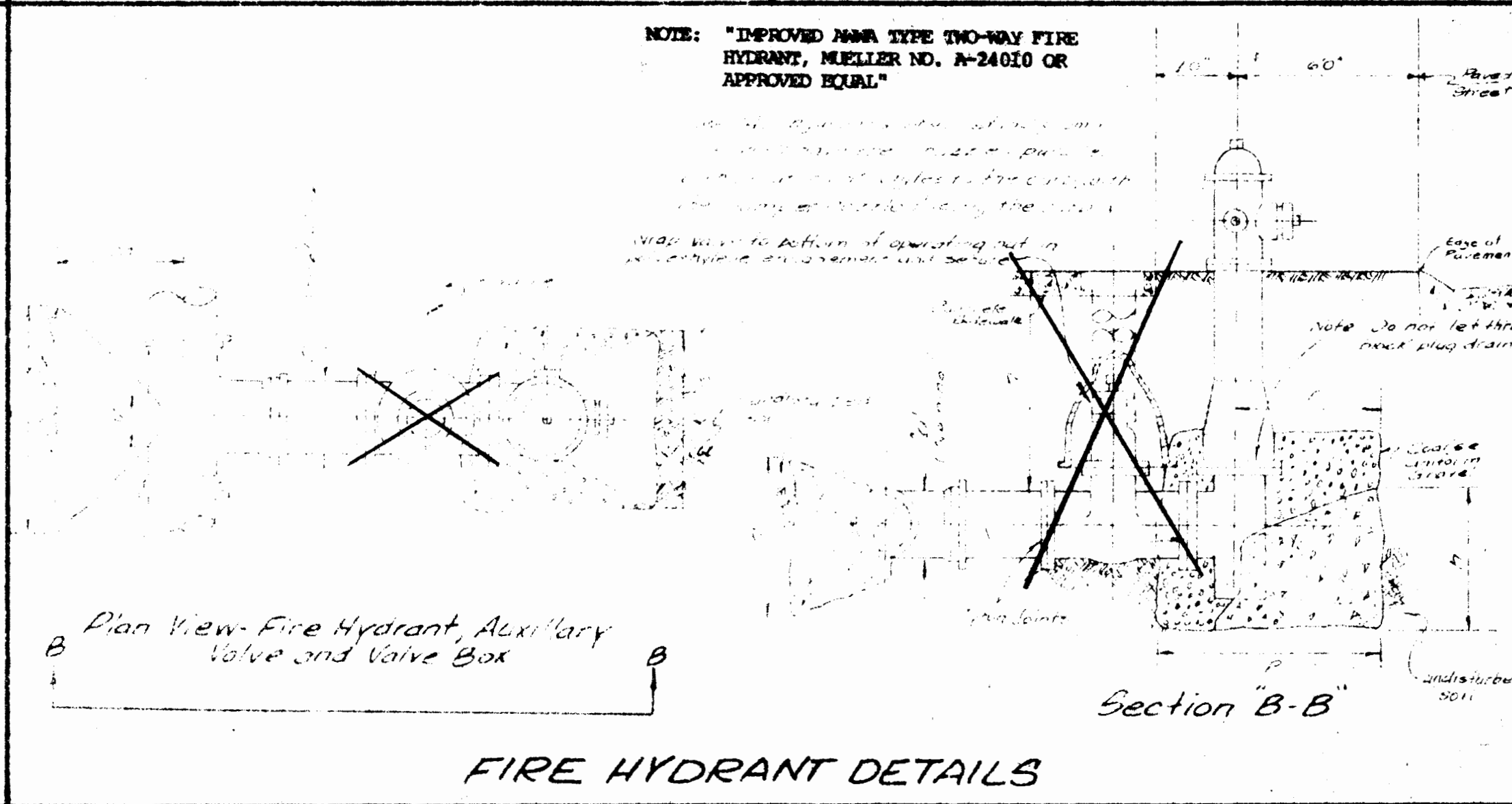
PLAN VIEW
22.5° Bend



NOTE: "MUELLER NO. A-2380-20 WITH VALVE
BOX NO. H-10360 & LID H-10361 OR
EQUAL."

SECTION D-D

NOTE: NO. 6 DEFORMED BARS MAY BE USED FOR
VALVE TO THRUST BLOCK CONNECTION.
BARS SHOULD BE BENT TO SHAPE WITH
ONE PLACED ON EACH SIDE OF VALVE
& MIN. OF ONE FOOT EMBEDMENT INTO
CONCRETE. VALVE MAY SET DIRECTLY
ON THRUST BLOCK.



NOTE: "IMPROVED M&M TYPE TWO-WAY FIRE
HYDRANT, MUELLER NO. A-24010 OR
APPROVED EQUAL"

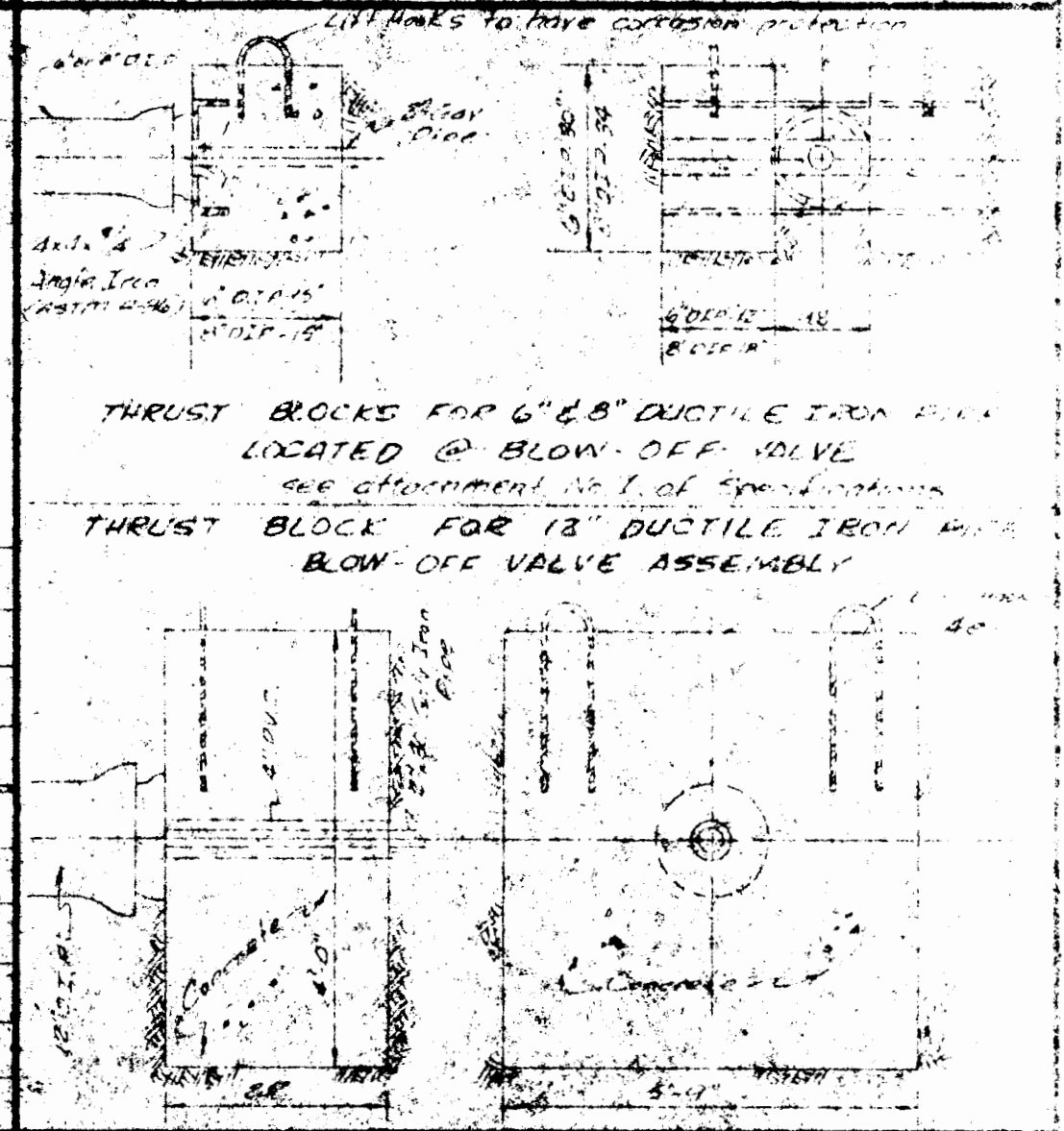
Section B-B

FIRE HYDRANT DETAILS

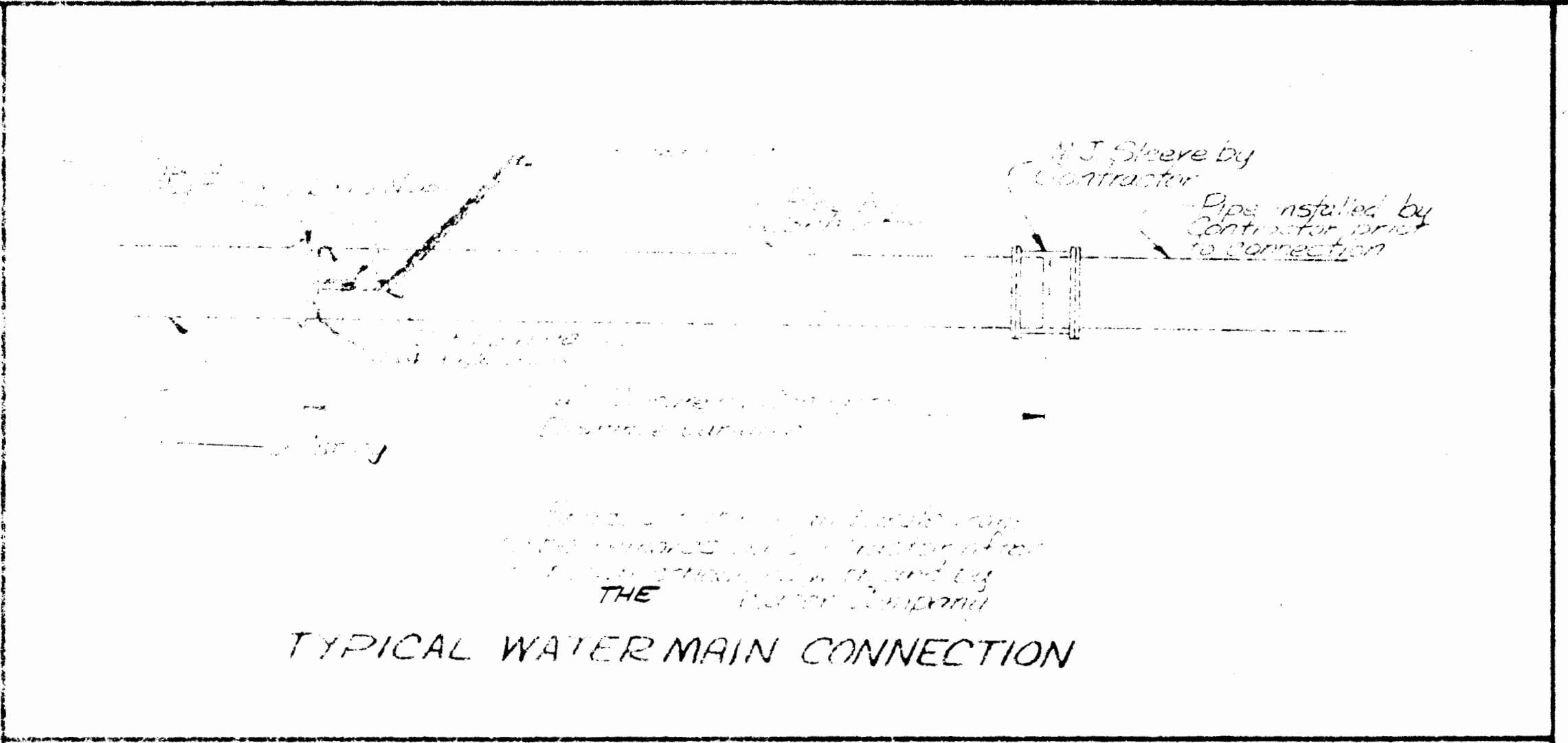
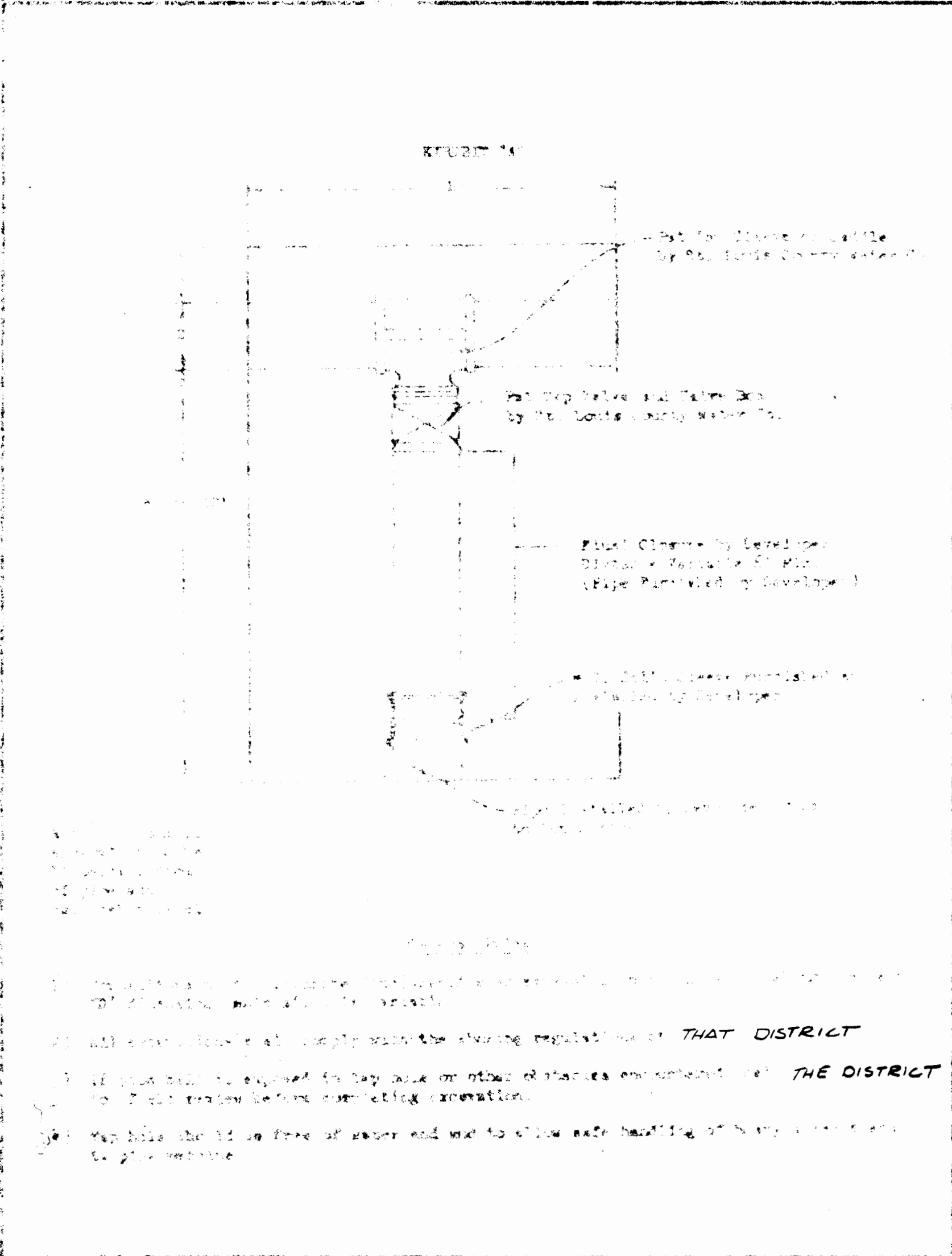
General Notes:
1) No thrust blocks to be placed in
sewer lateral ditches.

Fire Hydrant Thrust Block Dimensions (Inches)									
D	H	V	V	H	H	H	H	H	H
6	28	6	24	24	24	24	24	24	30

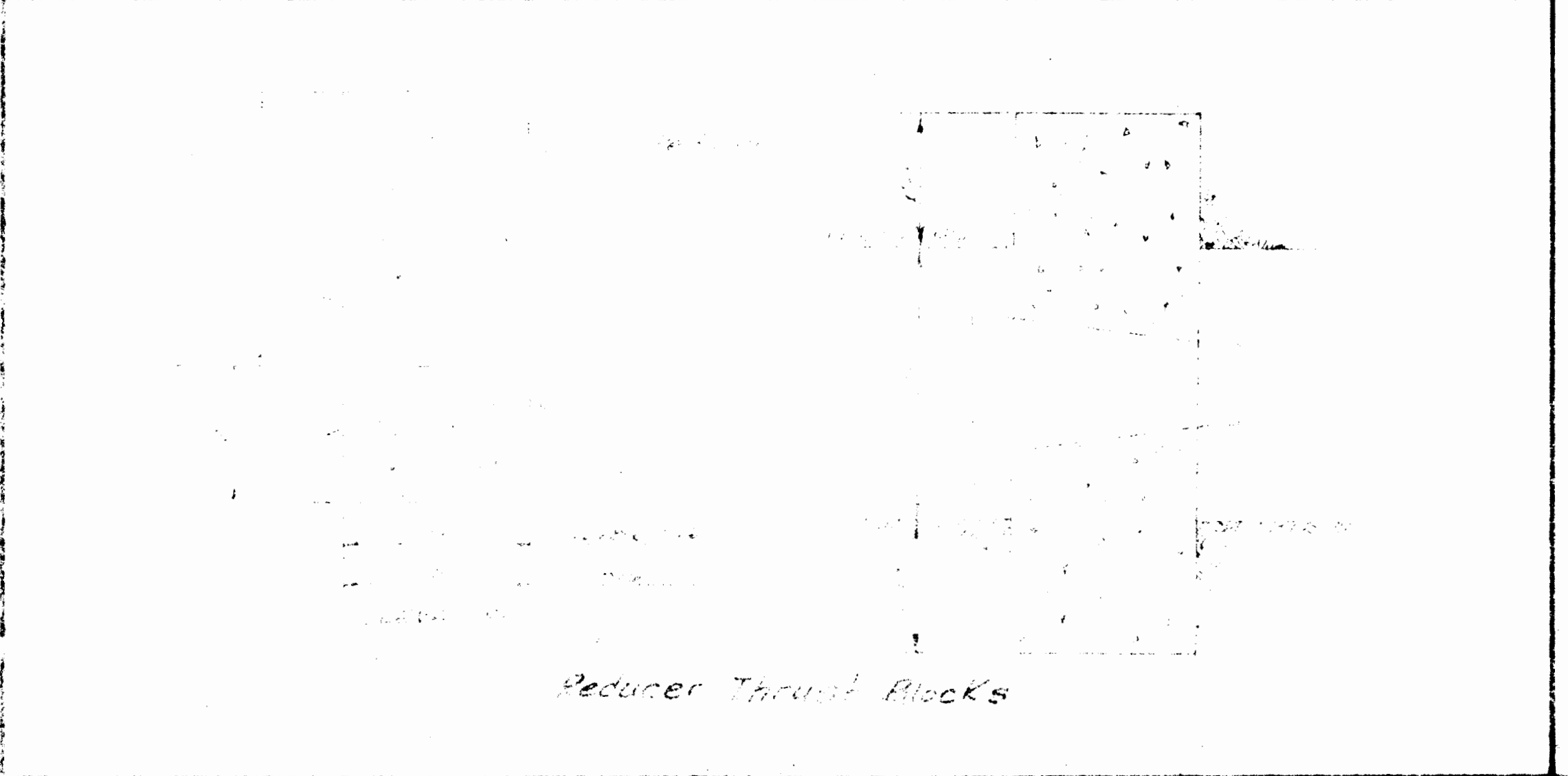
Thrust Block Dimensions (Inches)									
Size	100	40°	15°	22.5°	Wires				
6"	28	24	24	24	24	24	24	24	30
8"	36	30	30	30	30	30	30	30	36
12"	48	42	42	42	42	42	42	42	48



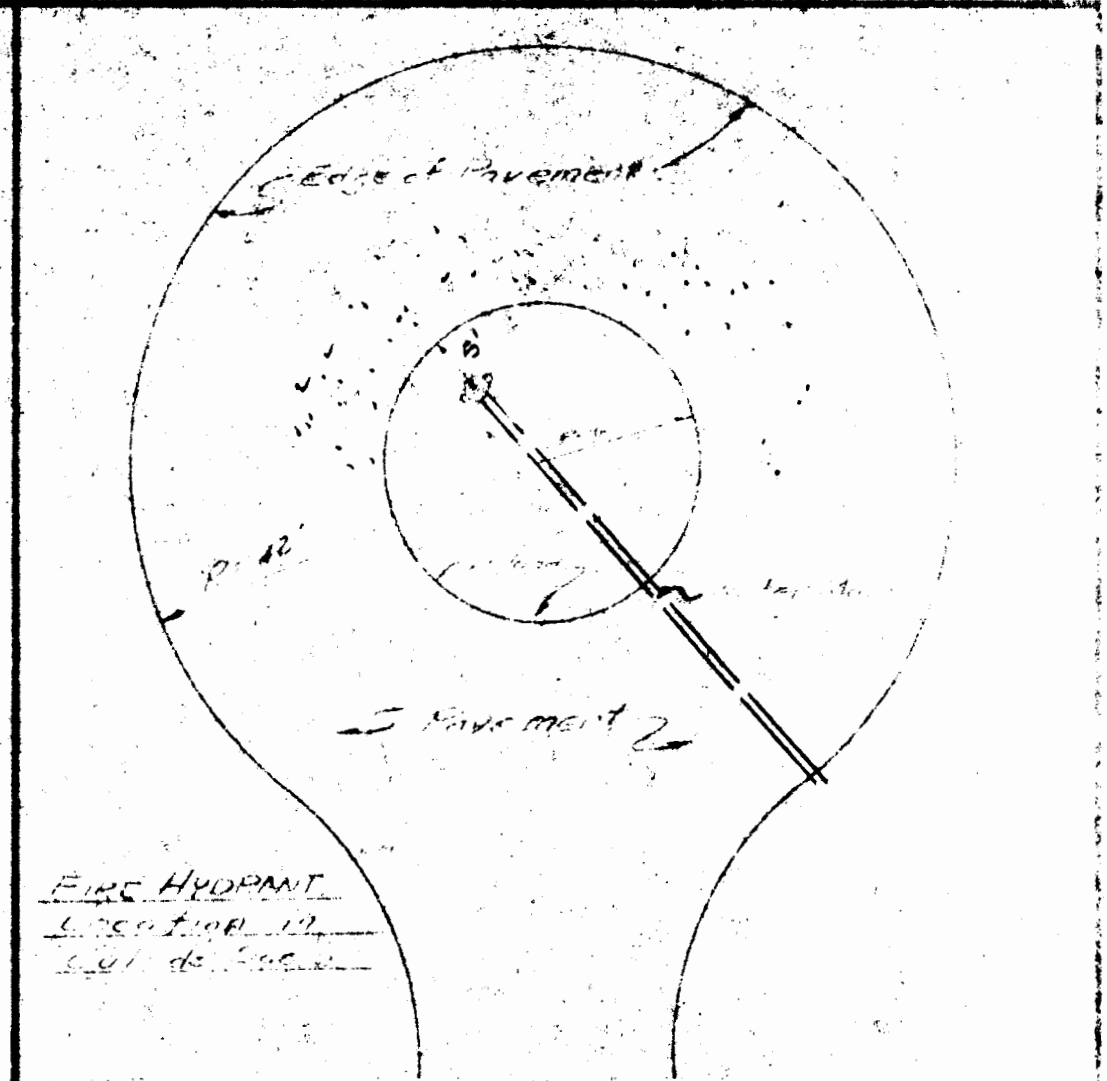
THRUST BLOCKS FOR 6" DUCTILE IRON PIPE
LOCATED @ BLOW-OFF VALVE
see attachment 101 of specifications
THRUST BLOCK FOR 12" DUCTILE IRON PIPE
BLOW-OFF VALVE ASSEMBLY



TYPICAL WATER MAIN CONNECTION



Reducer Thrust Blocks



FIRE HYDRANT
Location

REV. 2/26/01 WATER CO.

PEBBLE BROOK PLAT 3,5 & 6

WATER DETAILS

Fox & Cole

Consulting Engineers

1100 S. 10th Street
Lincoln, Nebraska 68502
Phone: 402-441-4149
Fax: 402-441-4150

Drawn By LRP	Checked By MTG	Project No.	Sheet No. 18 of 18
------------------------	--------------------------	-------------	------------------------------

Date: 2/16/01