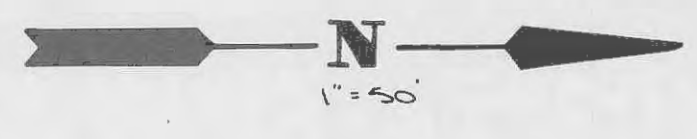
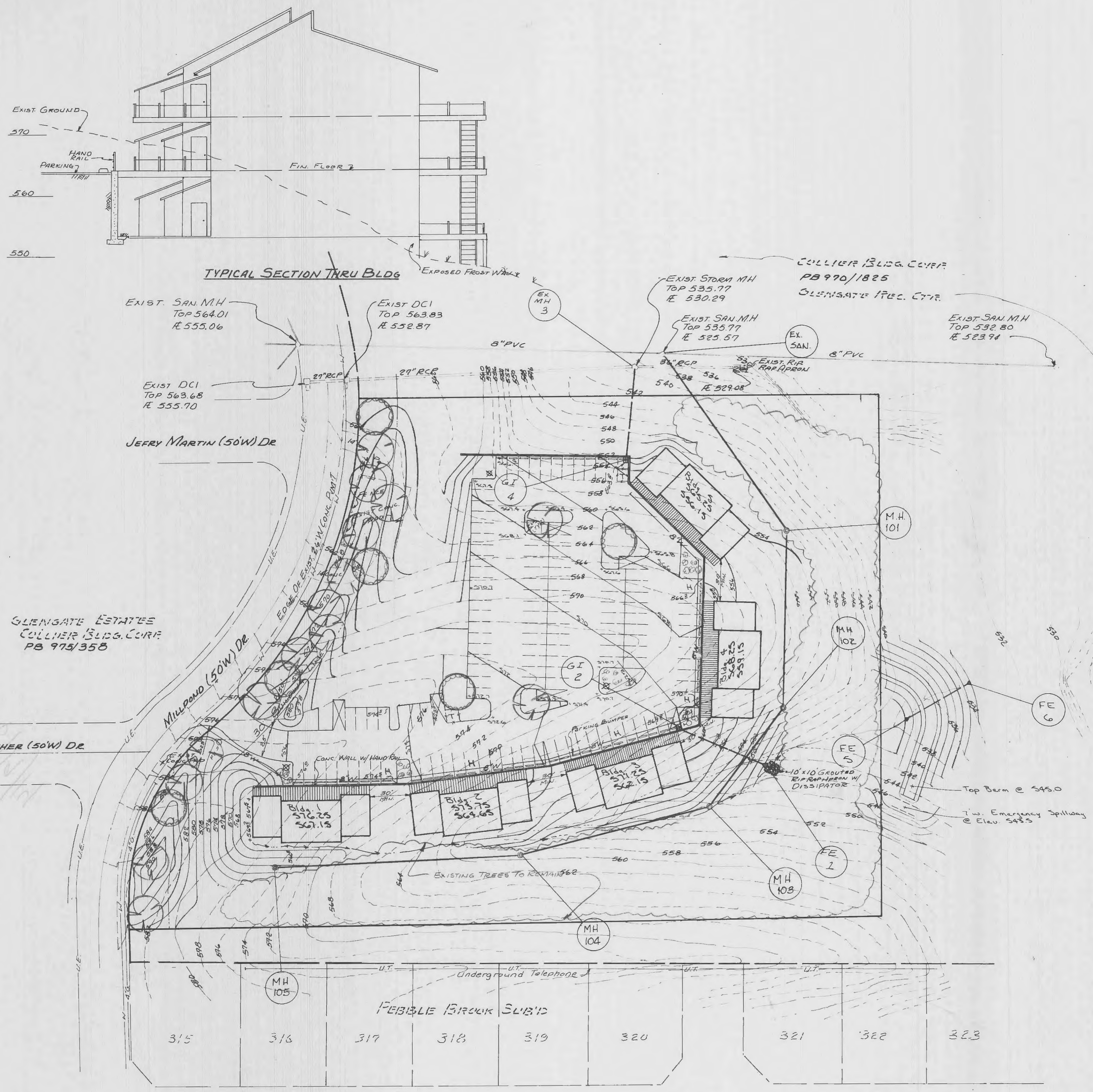
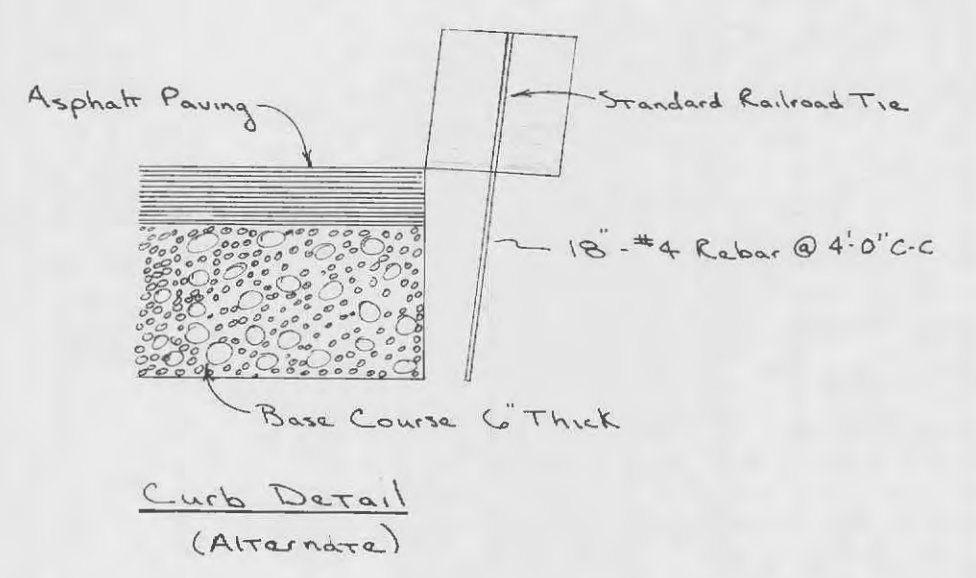


1000  
 Box 202  
 Pebble Creek

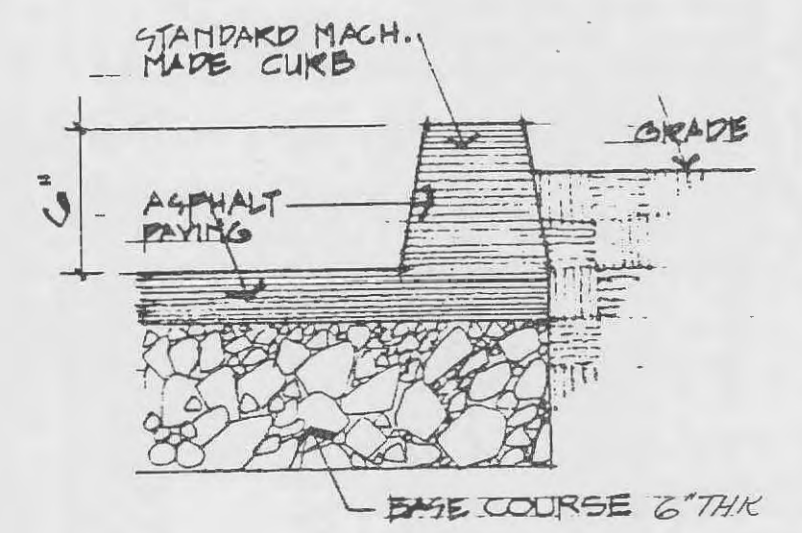


**LANDSCAPING**

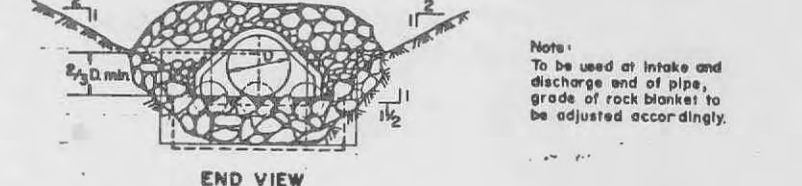
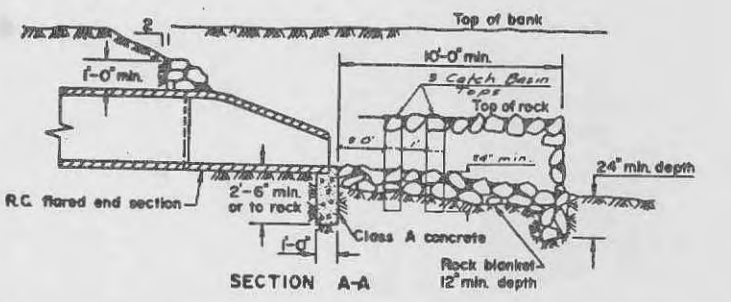
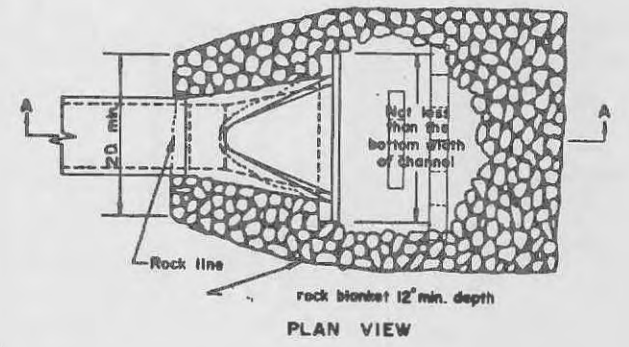
- PIN OAK (*Quercus palustris*) 2 1/2" Cal. Min. 6' Reg'd
- RED MAPLE (*Acer rubrum*) 2 1/2" Cal. Min. 15' Reg'd
- JUNIPER FITLERS (*Juniperus chinensis*) 20' Reg'd
- *Platanus* 18" Dia. Min.



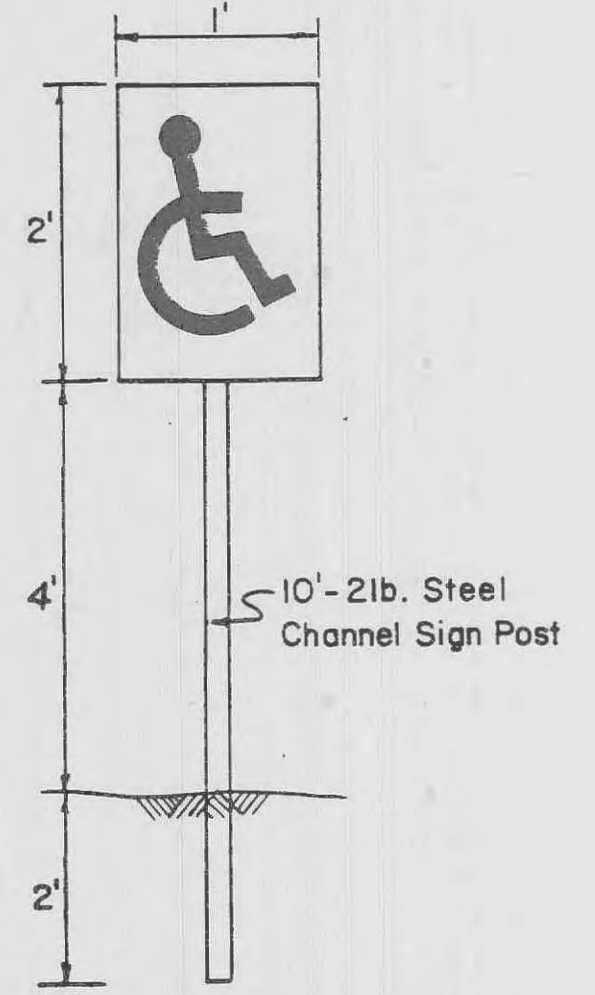
NOTE: CURBING IS REQUIRED AROUND ALL PAVING EXCEPT ALONG THE RETAINING WALL.



**Curb Detail**

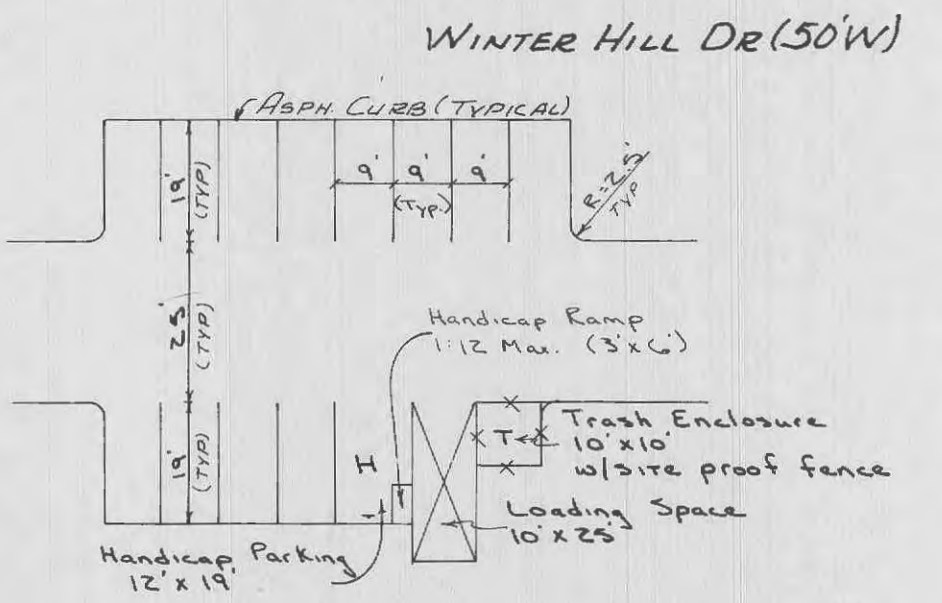


**RIP RAP DISSIPATOR DETAIL**



**HANDICAPPED PARKING SIGN**

One sign to be placed at each handicapped parking place. All handicapped parking spaces shall be level with walks, and the main entrances to a building shall be level with the walks.



**Parking Layout**

(Typical)

NOTE: EXISTING TREES NOT DISTURBED BY CONSTRUCTION ARE TO REMAIN.