

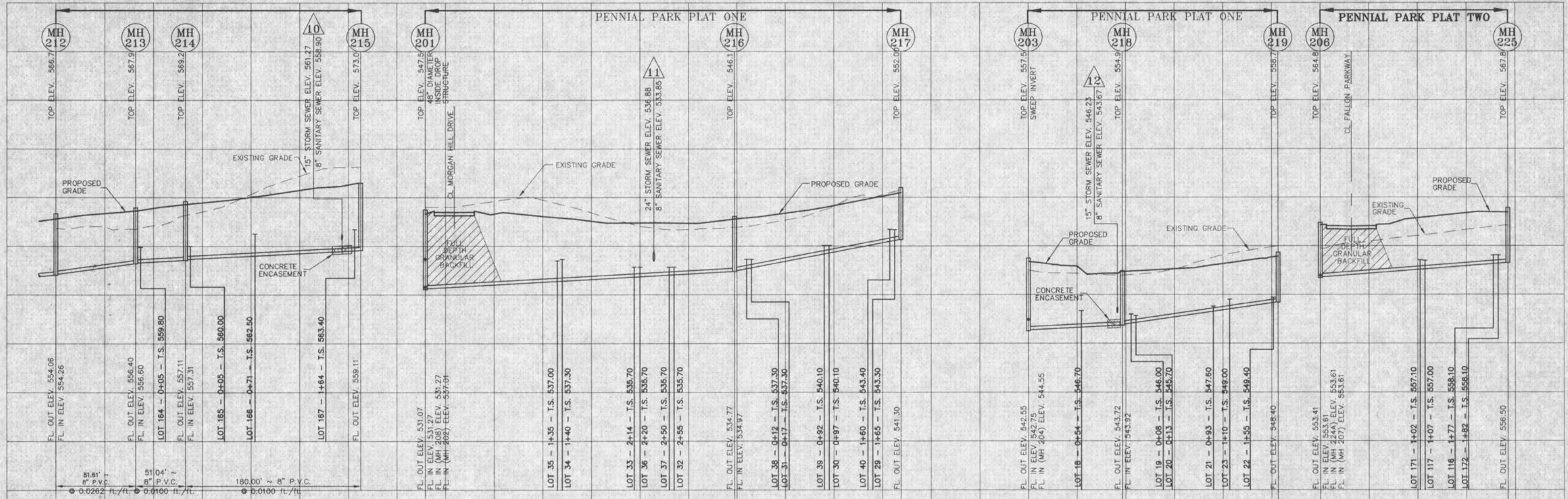
SCALES:  
 1"=50' HORIZONTAL  
 1"=10' VERTICAL

PENNIAL PARK PLAT TWO

PENNIAL PARK PLAT ONE

PENNIAL PARK PLAT ONE

PENNIAL PARK PLAT TWO

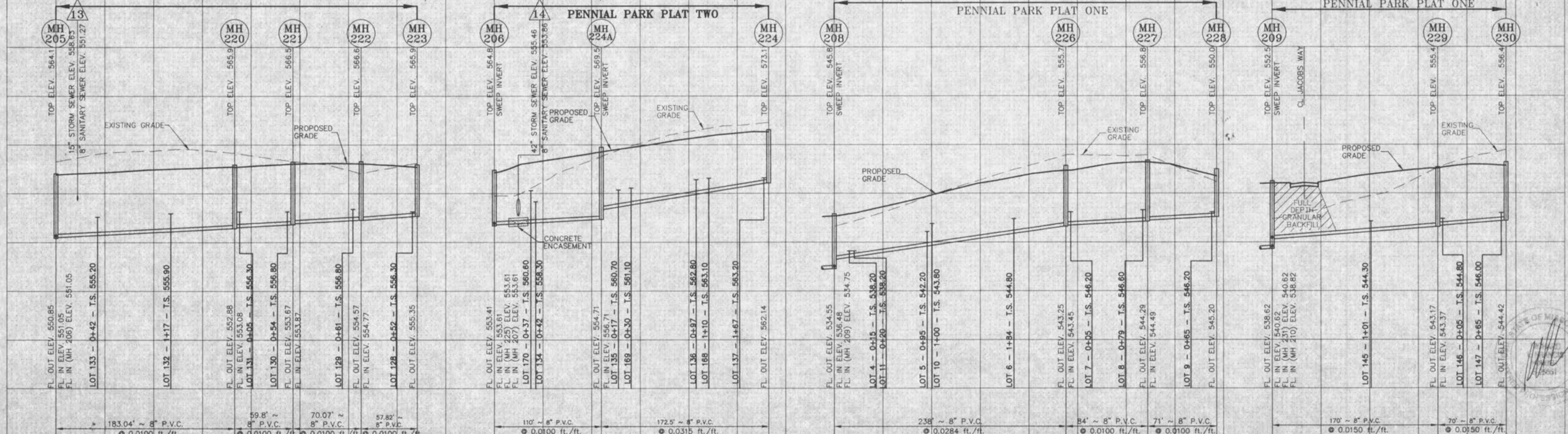


PENNIAL PARK PLAT TWO

PENNIAL PARK PLAT TWO

PENNIAL PARK PLAT ONE

PENNIAL PARK PLAT ONE



Underground utilities have been plotted from available information and, therefore, their locations shall be considered approximate only. The verification of the location of all underground utilities, either shown or not shown, on these plans shall be the responsibility of the Contractor, and shall be located prior to any grading or construction of the improvements.

These engineering plans have been prepared at the request of the developer for construction with some rock data, but not sufficient enough to determine the exact location of all existing rock conditions.

If existing rock conditions are encountered during construction it shall be the responsibility of the developer and his contractor to contact Box Engineering Co., Inc. and the soils engineer for the project at the time of encounter to determine the best design to continue construction.

NOTE: All Sanitary Sewer Lateral Toilets elevations have been designed for an 8.0' basement floor in homes with the Top of Foundation elevation being set 2.5' above the Top of Curb elevation at the driveway.

