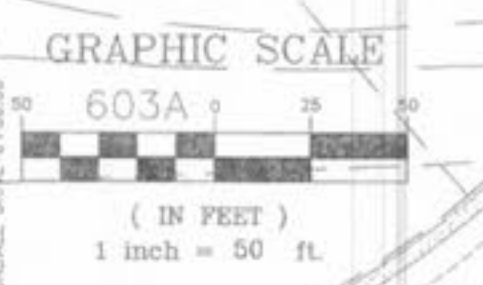
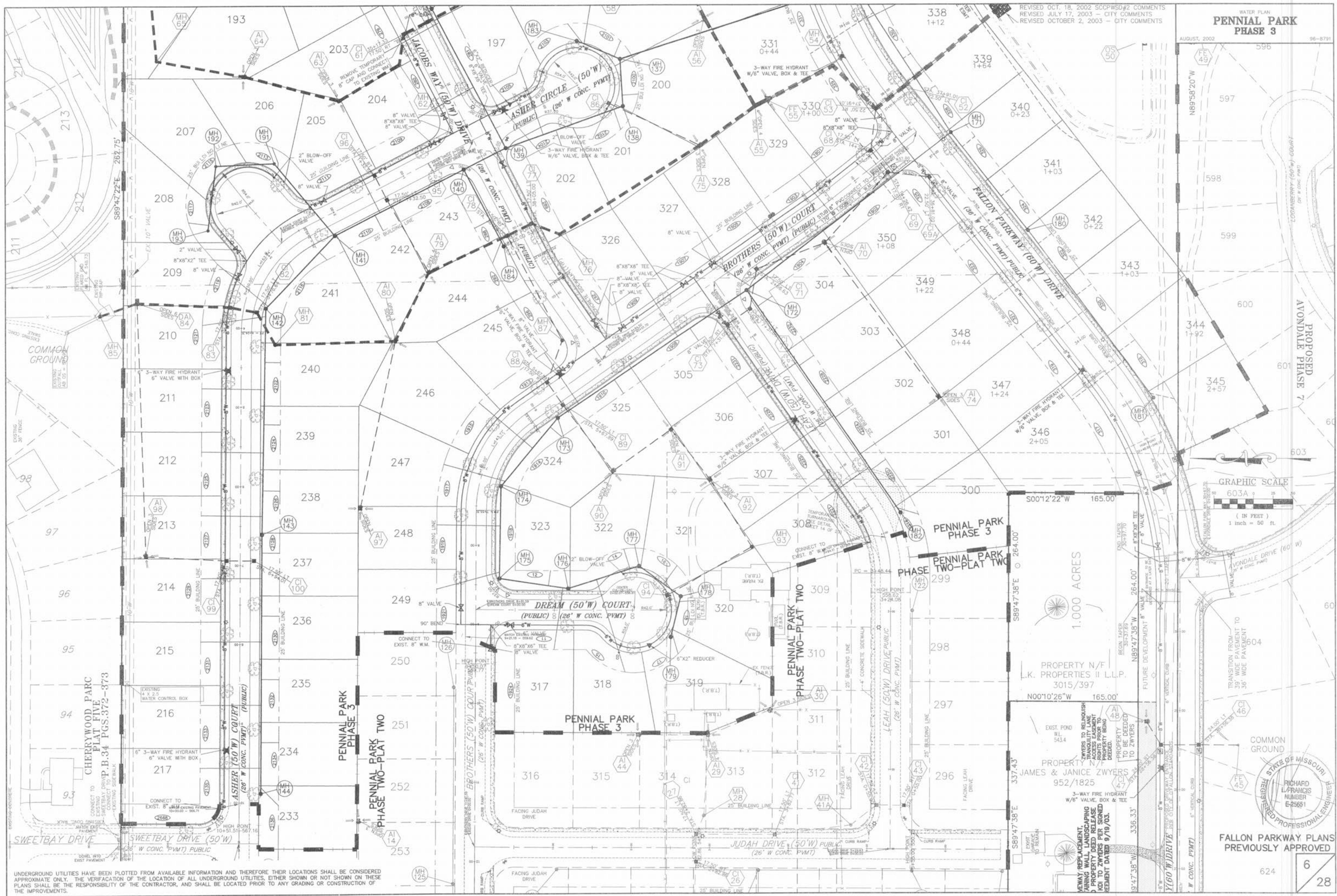


REVISED OCT. 18, 2002 SSCPWS0#2 COMMENTS
 REVISED JULY 17, 2003 - CITY COMMENTS
 REVISED OCTOBER 2, 2003 - CITY COMMENTS

**PENNIAL PARK
 PHASE 3**

AUGUST, 2002 96-8791



1.000 ACRES
 PROPERTY N/F
 L.K. PROPERTIES II L.L.P.
 3015/397
 N00°10'26"W 165.00'

PROPERTY N/F
 JAMES & JANICE ZWYERS
 952/1825
 337.43'



FALLON PARKWAY PLANS
 PREVIOUSLY APPROVED

UNDERGROUND UTILITIES HAVE BEEN PLOTTED FROM AVAILABLE INFORMATION AND THEREFORE THEIR LOCATIONS SHALL BE CONSIDERED APPROXIMATE ONLY. THE VERIFICATION OF THE LOCATION OF ALL UNDERGROUND UTILITIES, EITHER SHOWN OR NOT SHOWN ON THESE PLANS SHALL BE THE RESPONSIBILITY OF THE CONTRACTOR, AND SHALL BE LOCATED PRIOR TO ANY GRADING OR CONSTRUCTION OF THE IMPROVEMENTS.