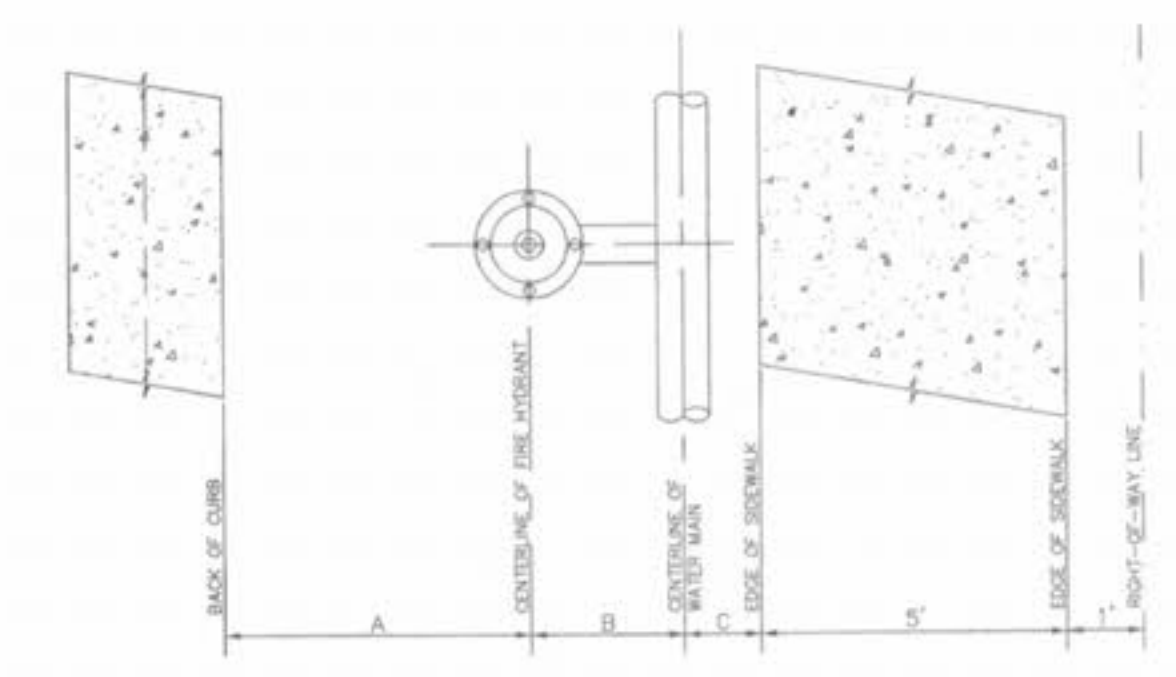


TYPICAL WATER AND SEWER SEPARATION
 NOT TO SCALE



CONFIGURATION

	A	B	C
60' RIGHT-OF-WAY/36" PAVEMENT/WITHOUT SIDEWALK	3'	5'	N/A
60' RIGHT-OF-WAY/36" PAVEMENT/WITH SIDEWALK	3'	5'	1'
50' RIGHT-OF-WAY/26" PAVEMENT/WITHOUT SIDEWALK	3'	3'	N/A
50' RIGHT-OF-WAY/26" PAVEMENT/WITH SIDEWALK	3'	3'	1'

VEGETATIVE ESTABLISHMENT
For Urban Development Sites
APPENDIX A

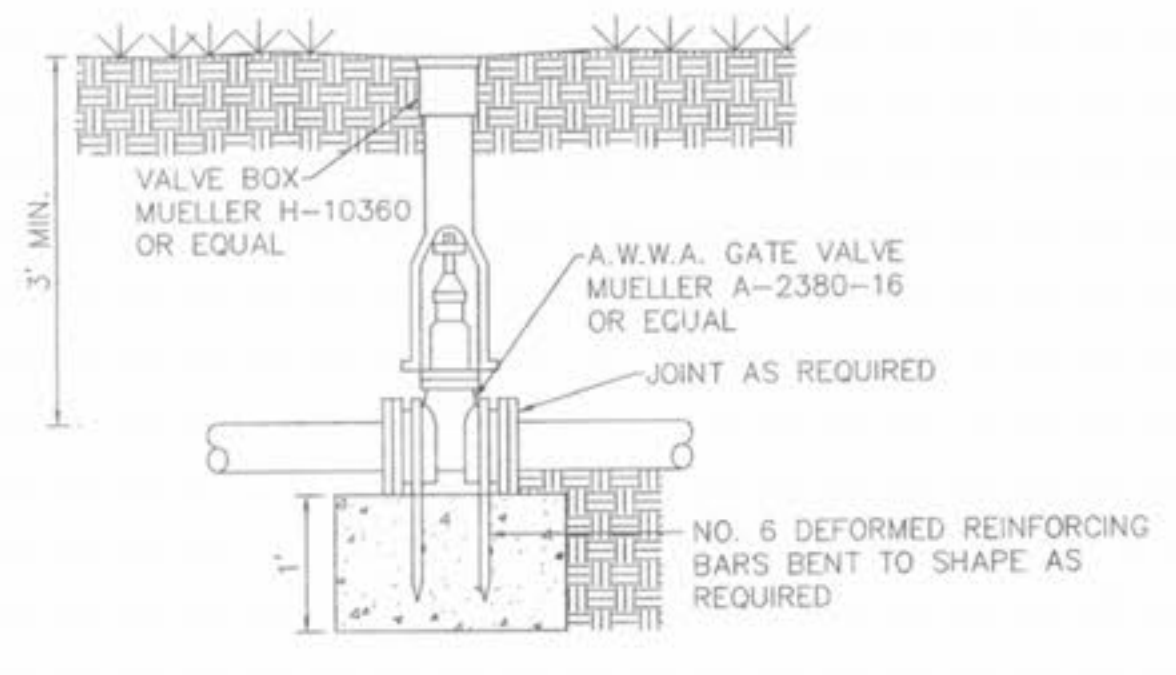
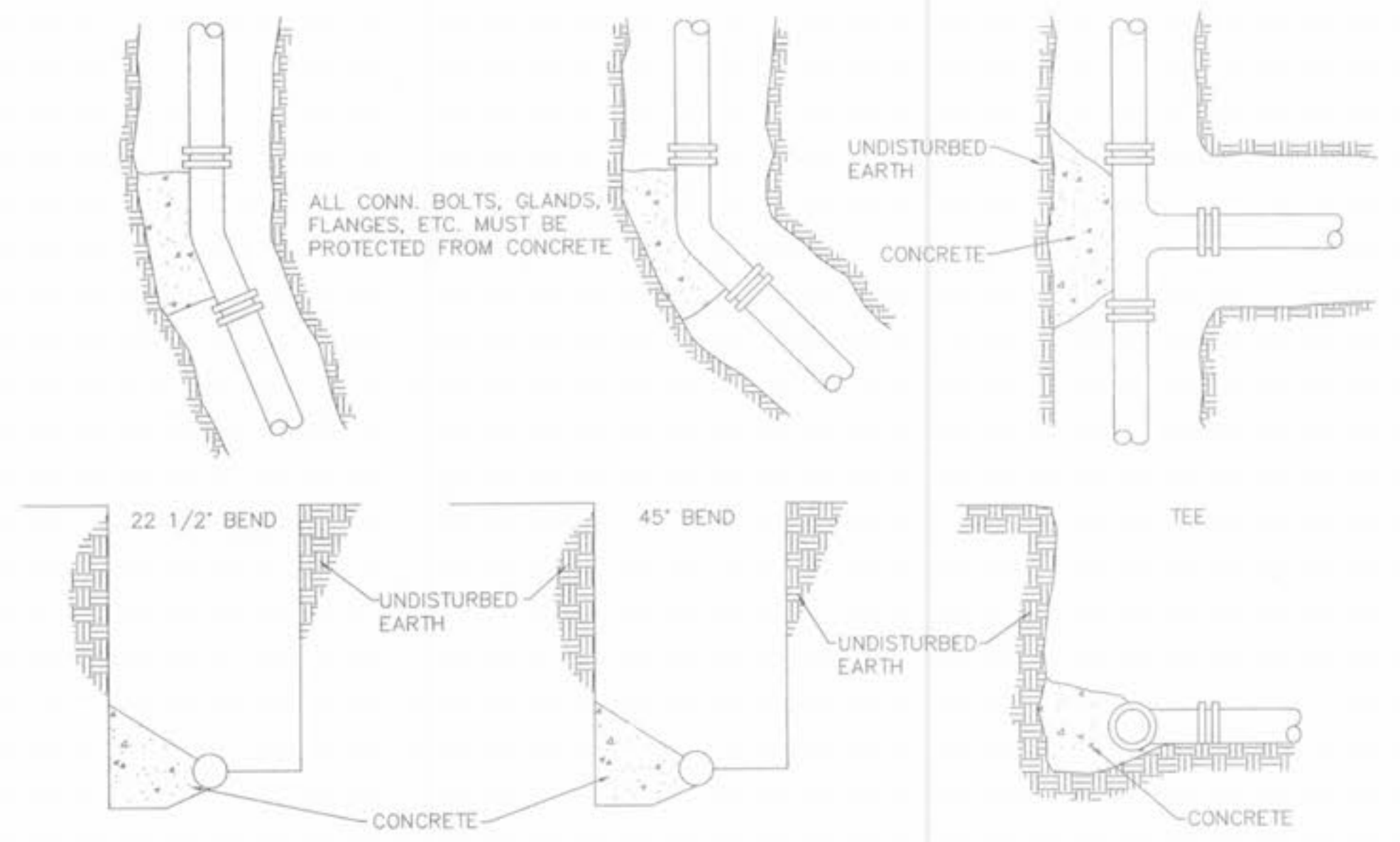
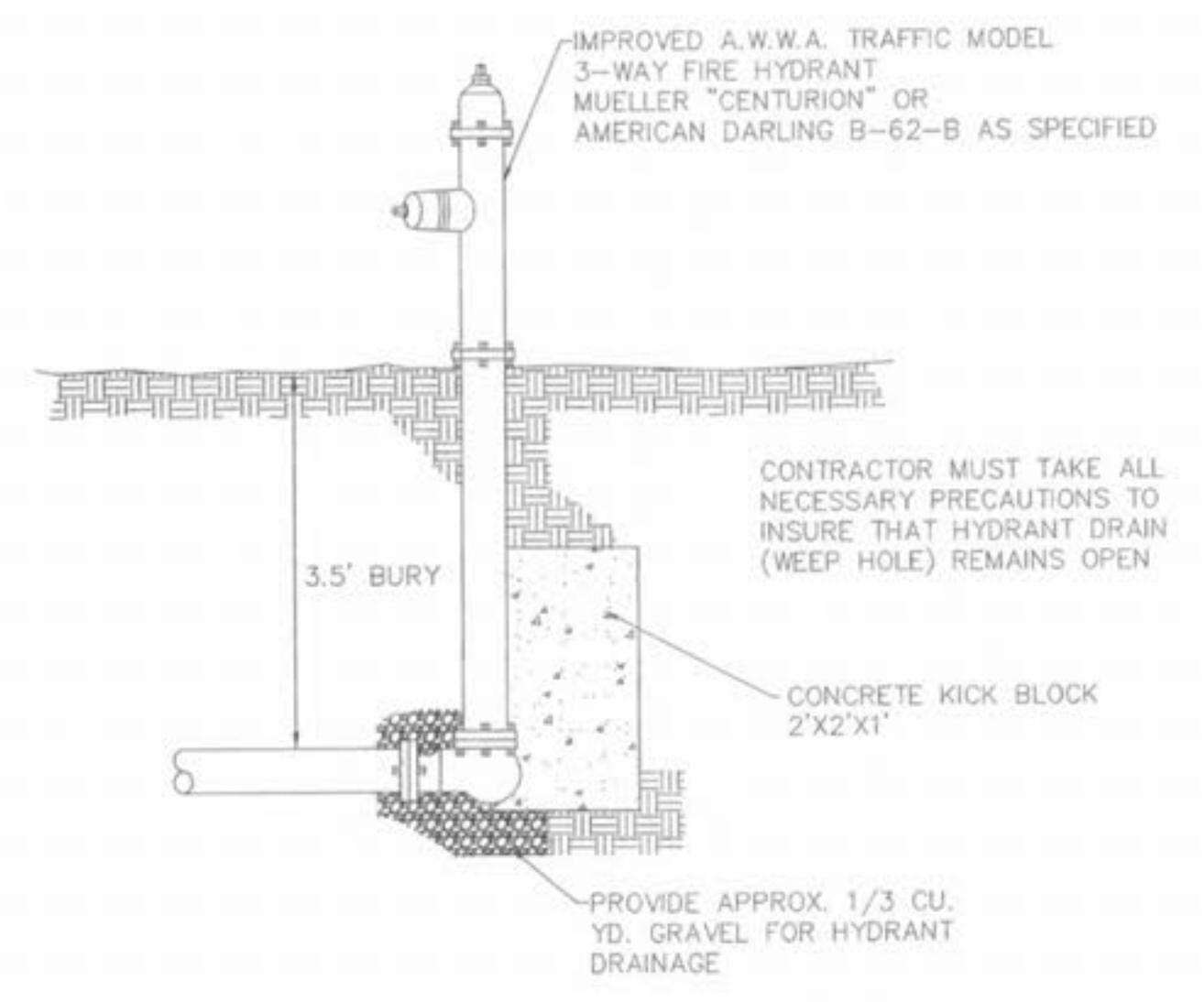
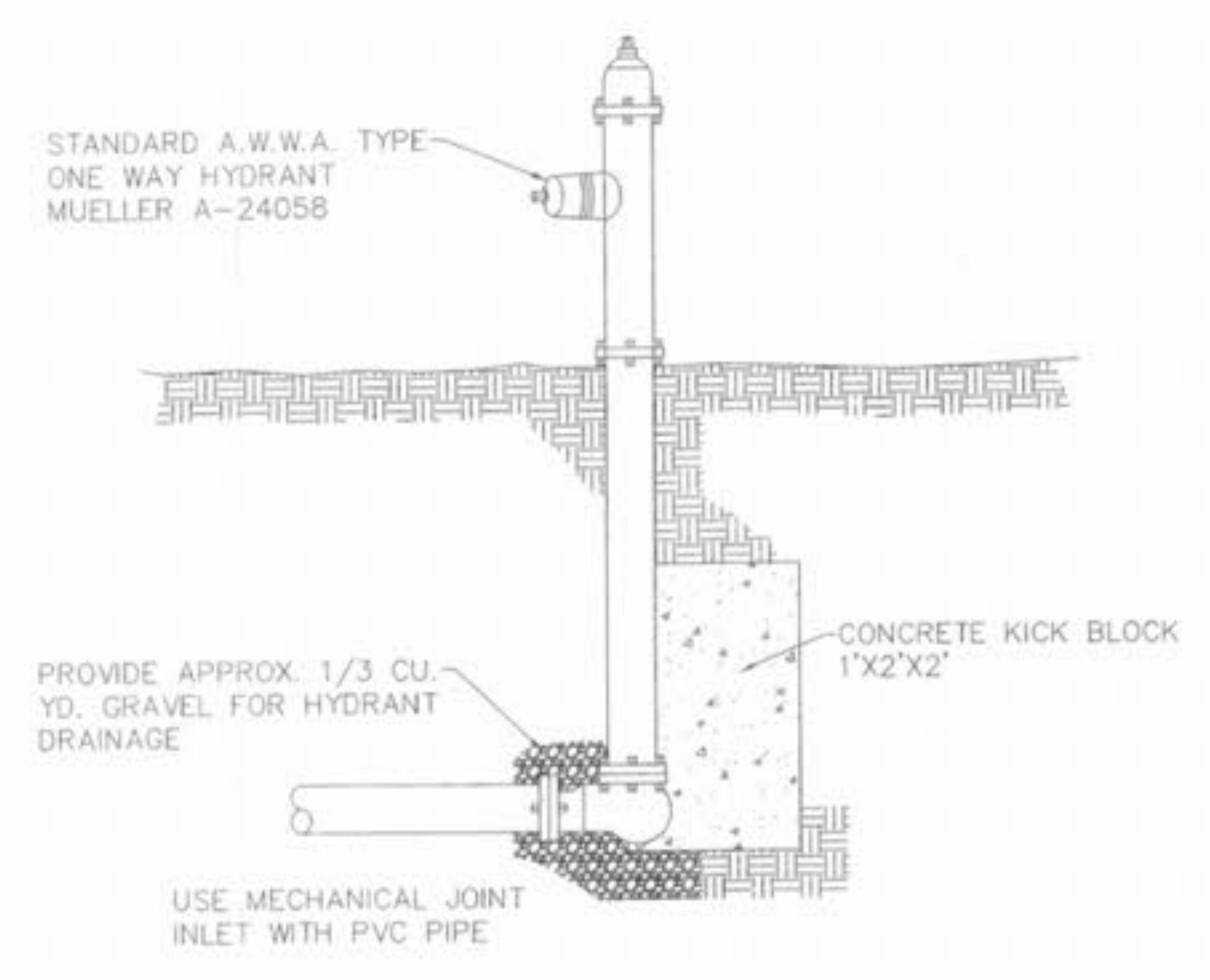
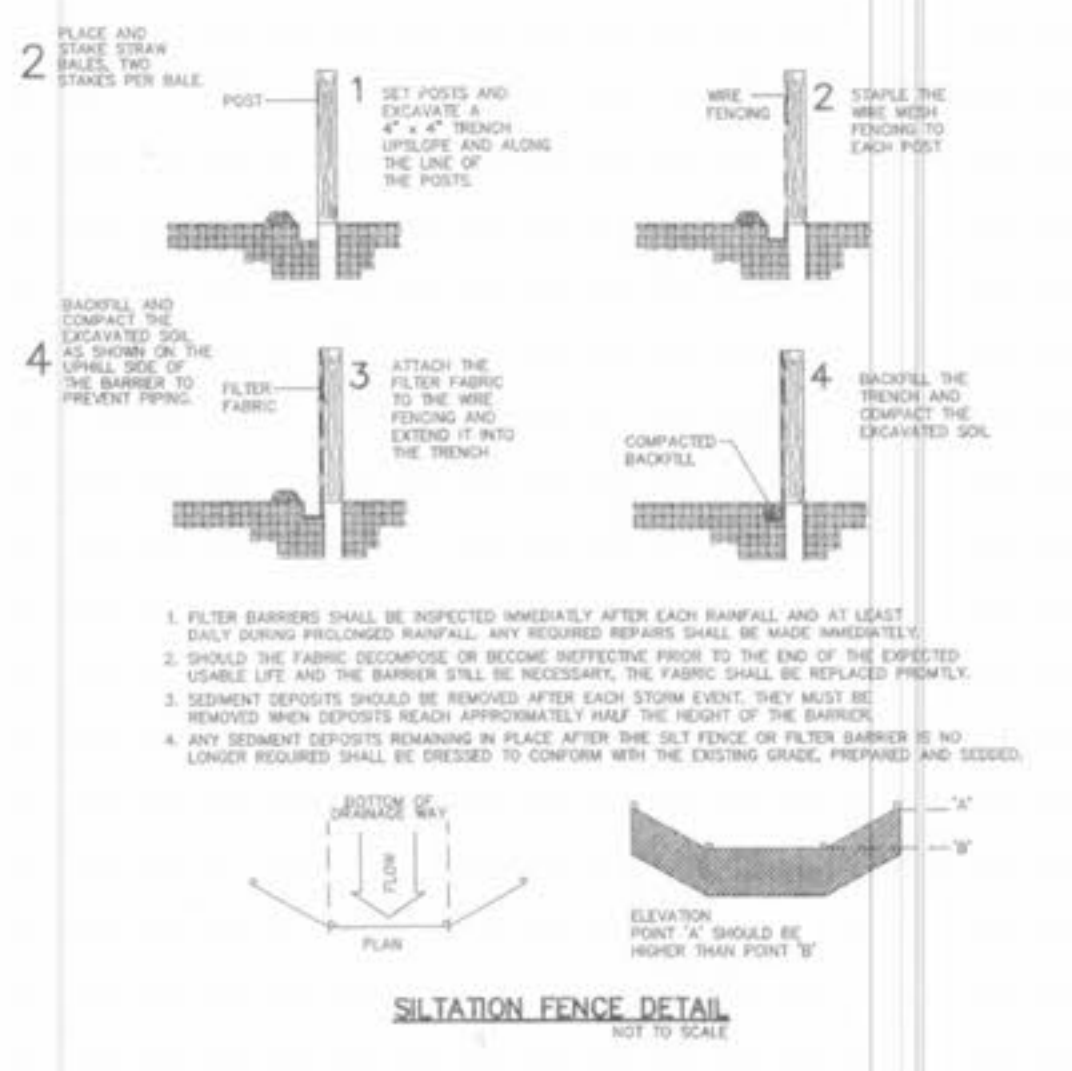
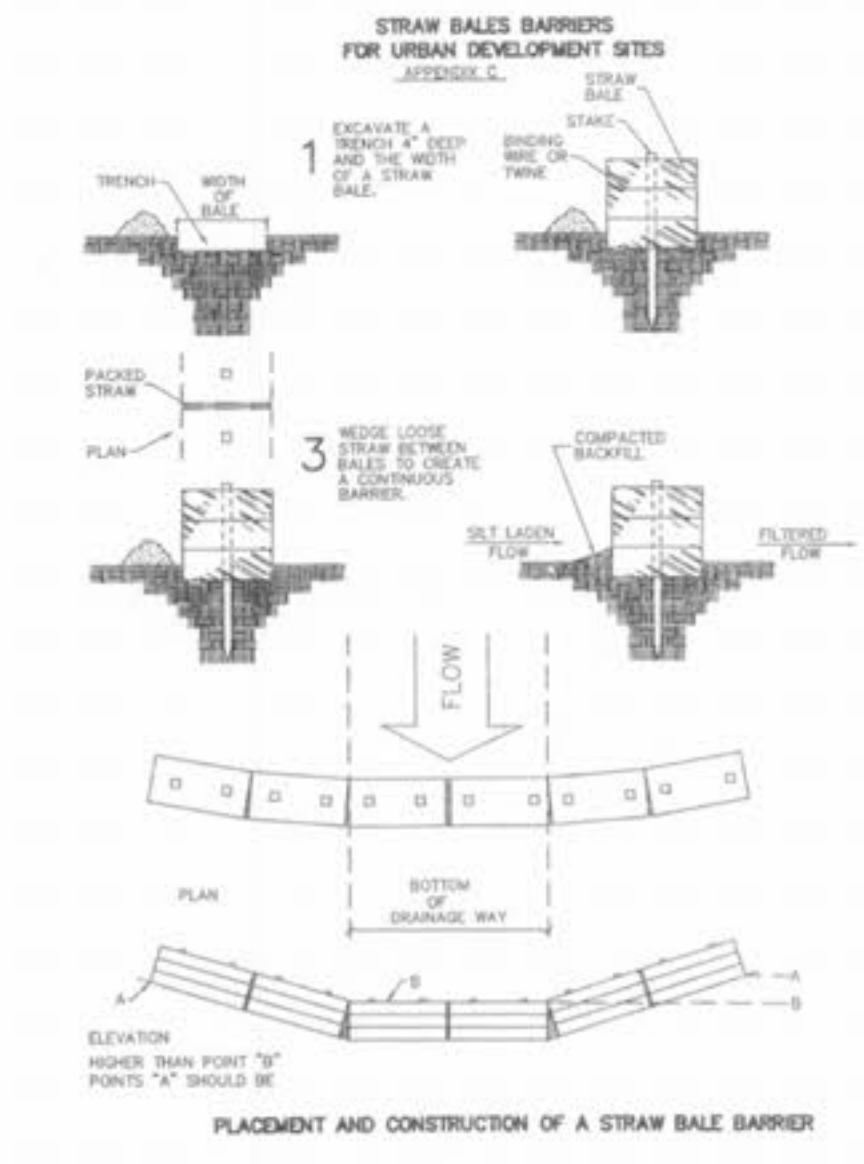
Seeding Rates:
 Permanent:
 Tall Fescue - 30 lbs./ac.
 Smooth Brome - 20 lbs./ac.
 Combined Fescue @ 15 lbs./ac. and Brome @ 10 lbs./ac.
 Temporary:
 Wheat or Rye - 150 lbs./ac. (3.5 lbs. per square foot)
 Oats - 120 lbs./ac. (2.75 lbs. per square foot)

Seeding Periods:
 Fescue or Brome - March 1 to June 1
 August 1 to October 1
 Wheat or Rye - March 15 to November 1
 Oats - March 15 to September 15

Mulch Rates: 100 lbs. per 1,000 sq. feet (4,356 lbs. per acre)

Fertilizer Rates: Nitrogen 30 lbs./ac.
 Phosphate 30 lbs./ac.
 Potassium 30 lbs./ac.
 Lime 600 lbs./ac. ENM*

* ENM = effective neutralizing material as per State evaluation of quarried rock.



MIN. THRUST BLOCK BEARING DIMENSIONS TO BEAR AGAINST UNDISTURBED EARTH

MAIN SIZE (I.D.)	45° BEND	22 1/2° BEND	TEE	VALVE	CROSS
2"	.5' X 1'	.5' X 1'	.5' X 1'	.5' X 1'	.5' X 1'
4"	1' X 1'	1' X 1'	2' X 1'	2' X 1'	1' X 1'
6"	1.5' X 1'	1' X 1'	2' X 1'	2' X 1'	1' X 1'
8"	2' X 1'	1' X 1'	2' X 2.5'	2' X 2'	1' X 1.5'
10"	2' X 2.5'	1.5' X 2'	2' X 3.5'	2' X 3'	2' X 2'
12"	2' X 3.5'	1.5' X 2.5'	3' X 3.5'	3' X 3'	2' X 3'
16"	3' X 4'	2' X 3'	4' X 4.5'	3' X 4.5'	3' X 3.5'

