

SUBDIVISION PLAT

ENGINEERS
ARCHITECTS
SURVEYORS
SCIENTISTS



Farnsworth GROUP

20 ALLEN AVENUE, SUITE 200
ST LOUIS, MISSOURI 63119
(314) 962-7900 / (314) 962-1253 Fax

www.f-w.com

ISSUE:

#	Date:	Description:
1	2/13/04	City of O'Fallon Comments
2	2/13/04	Duckett Creek Sanitary District Comments
3	2/13/04	Cottleville Fire Protection District Comments
4	2/13/04	MoDot Comments
5	2/13/04	Corps of Engineers Comments



CALL BEFORE YOU DIG - DRILL - BLAST
1-800-344-7483
(TOLL FREE)

MISSOURI ONE CALL SYSTEM, INC.

* FIBER OPTIC PRESENT *

MoDOT (314) 340-4100

PROJECT:

PERSIMMON POINTE HOTEL DEVELOPMENT

#4130 HIGHWAY 40-61
O'FALLON, MO

Date: 12-30-04

Design/Drawn: D

Approved: JT

Book No.:

SHEET TITLE:

SUBDIVISION PLAT

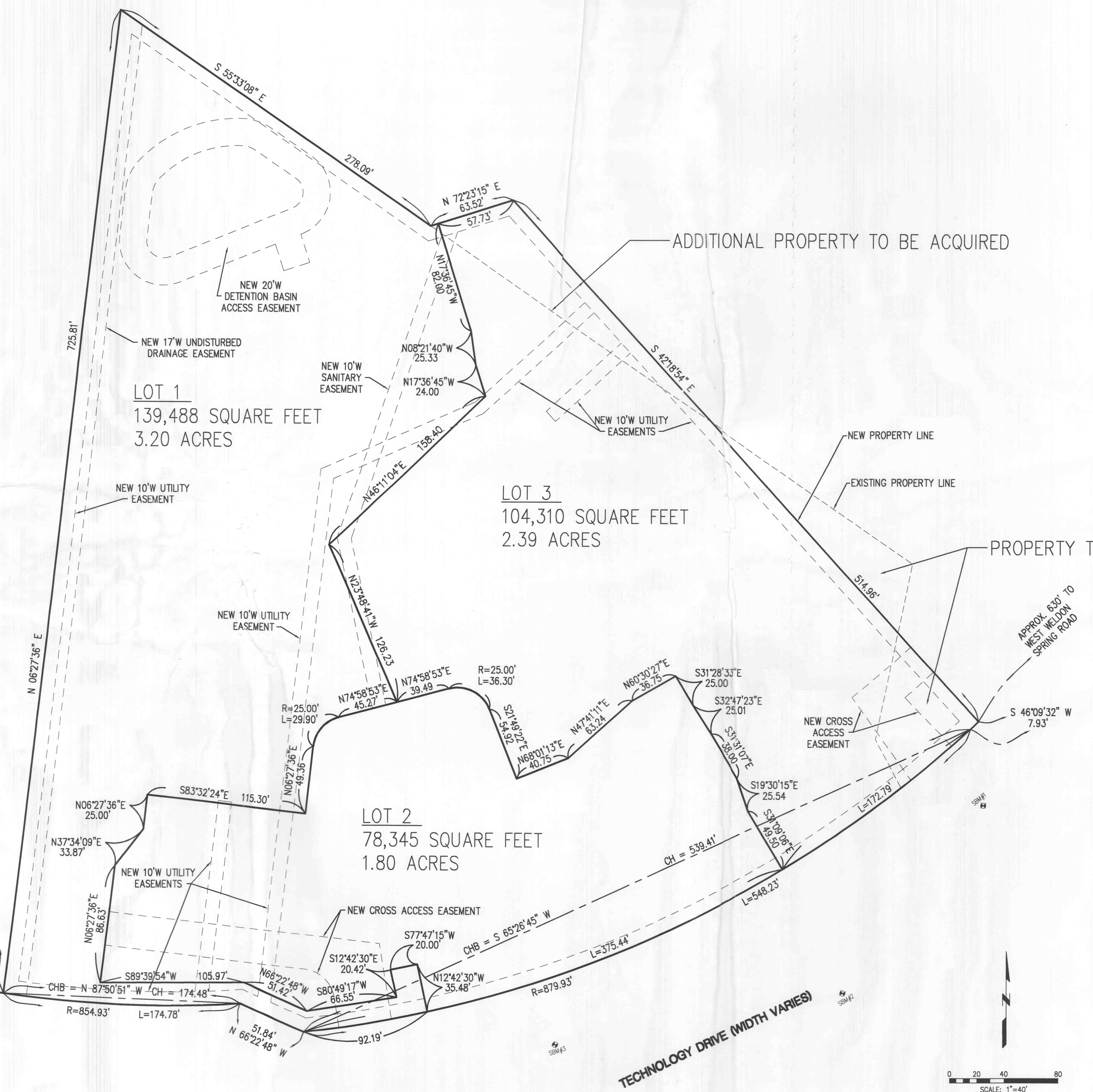
SHEET NUMBER:

SP1

SHEET 4 OF 36

Project No.: 299163.1

Planning & Zoning File: #3103.0



P:\1999\289163.12-hwy 40 to the N\dwg\289163-CDS.DWG | DATE: 02/13/2004 | TIME: 16:41