

SITE GEOMETRIC PLAN

GENERAL NOTES

1. ALL DIMENSIONS ARE TO FRONT FACE OF CURB UNLESS NOTED OTHERWISE.
2. IMPROVEMENTS ARE GENERALLY PARALLEL AND PERPENDICULAR TO THE WEST OR EAST PROPERTY LINES, EXCEPT FRONT AND REAR PARKING.

ENGINEERS
ARCHITECTS
SURVEYORS
SCIENTISTS



Farnsworth GROUP

20 ALLEN AVENUE, SUITE 200
ST LOUIS, MISSOURI 63119
(314) 962-7900 / (314) 962-1253 Fax

www.f-w.com

ISSUE:

| # | Date: | Description: |
|---|---------|---|
| 1 | 2/13/04 | City of O'Fallon Comments |
| 2 | 2/13/04 | Duckett Creek Sanitary District Comments |
| 3 | 2/13/04 | Cottleville Fire Protection District Comments |
| 4 | 2/13/04 | MoDot Comments |
| 5 | 2/13/04 | Corps of Engineers Comments |
| 6 | 3/15/04 | Duckett Creek Sanitary District Comments |
| 7 | 3/18/04 | Revisions per Architect |



CALL BEFORE YOU
DIG - DRILL - BLAST
1-800-344-7483
(TOLL FREE)

MISSOURI ONE CALL SYSTEM, INC.
* FIBER OPTIC PRESENT *
MoDOT (314) 340-4100

PROJECT:

PERSIMMON POINTE
HOTEL DEVELOPMENT



#4130 HIGHWAY 40-61
O'FALLON, MO

Date: 12-30-03

Design/Drawn: DB

Approved: JTB

Book No.:

SHEET TITLE:

SITE GEOMETRIC PLAN

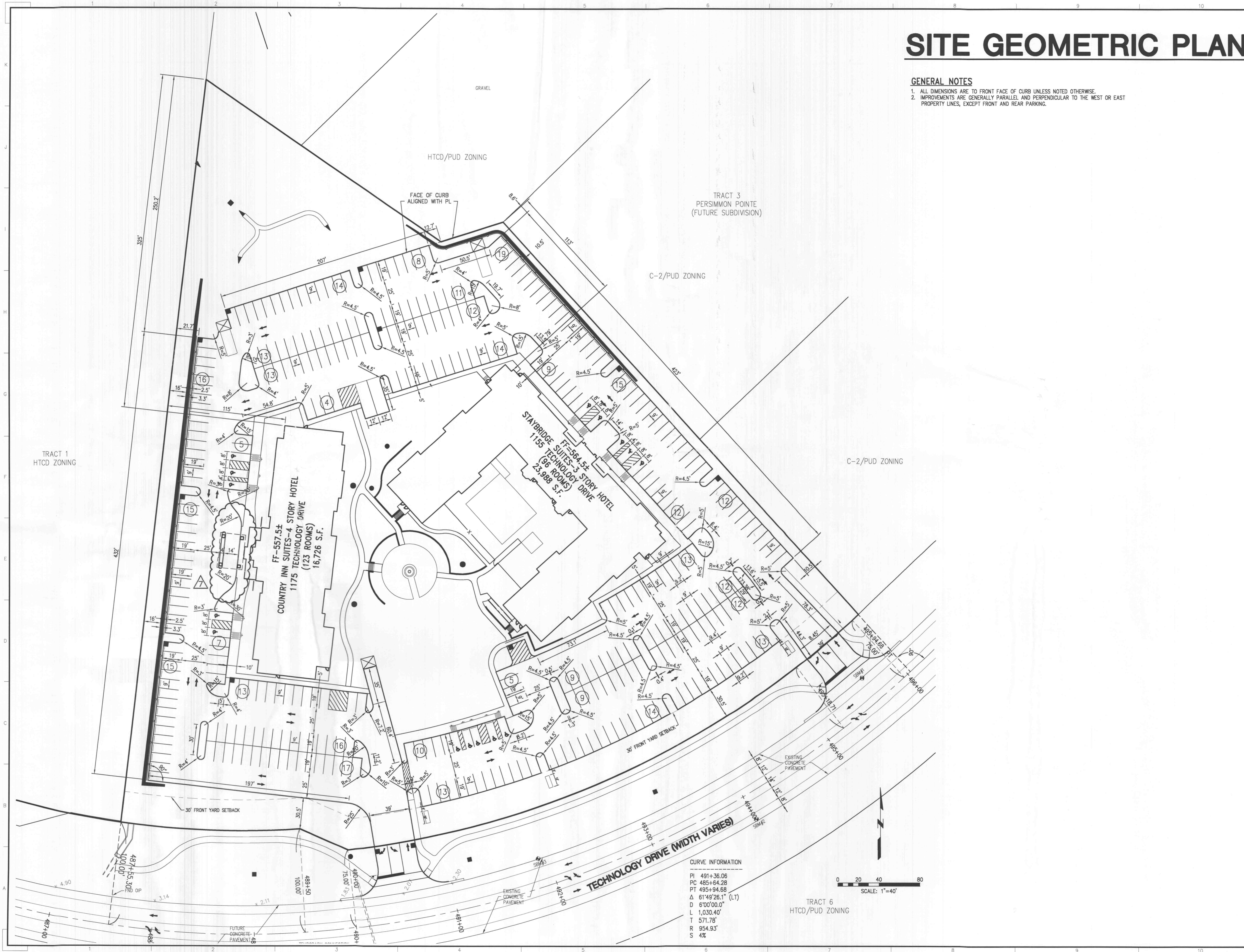
SHEET NUMBER:

C7

SHEET 11 OF 36

Project No.: 299163.12
Planning & Zoning File: #3103.03

XRef Files: \\299163\files\sew... \V-299163\plan-11-25-03-14... \plan-3-18-04...
 | Drawn: P:\1995\299163\12-hwy 40 @ fte A\wg\299163-COS.DWG | DATE: 03/18/2004 | Time: 13:01 |



CURVE INFORMATION

| | |
|----|------------------|
| PI | 491+36.06 |
| PC | 485+64.28 |
| PT | 495+94.68 |
| Δ | 61°49'26.1" (LT) |
| D | 6'00'00.0" |
| L | 1,030.40' |
| T | 571.78' |
| R | 954.93' |
| S | 4% |