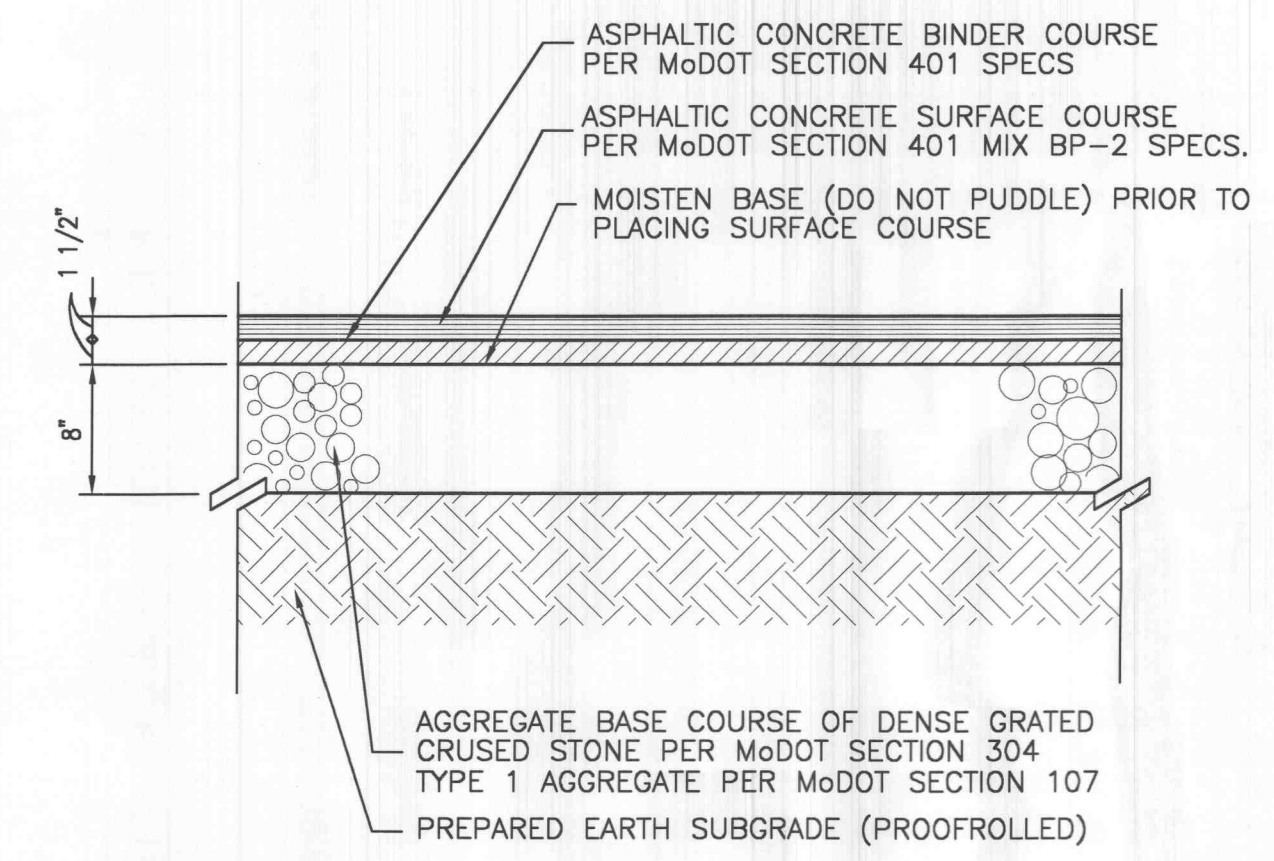


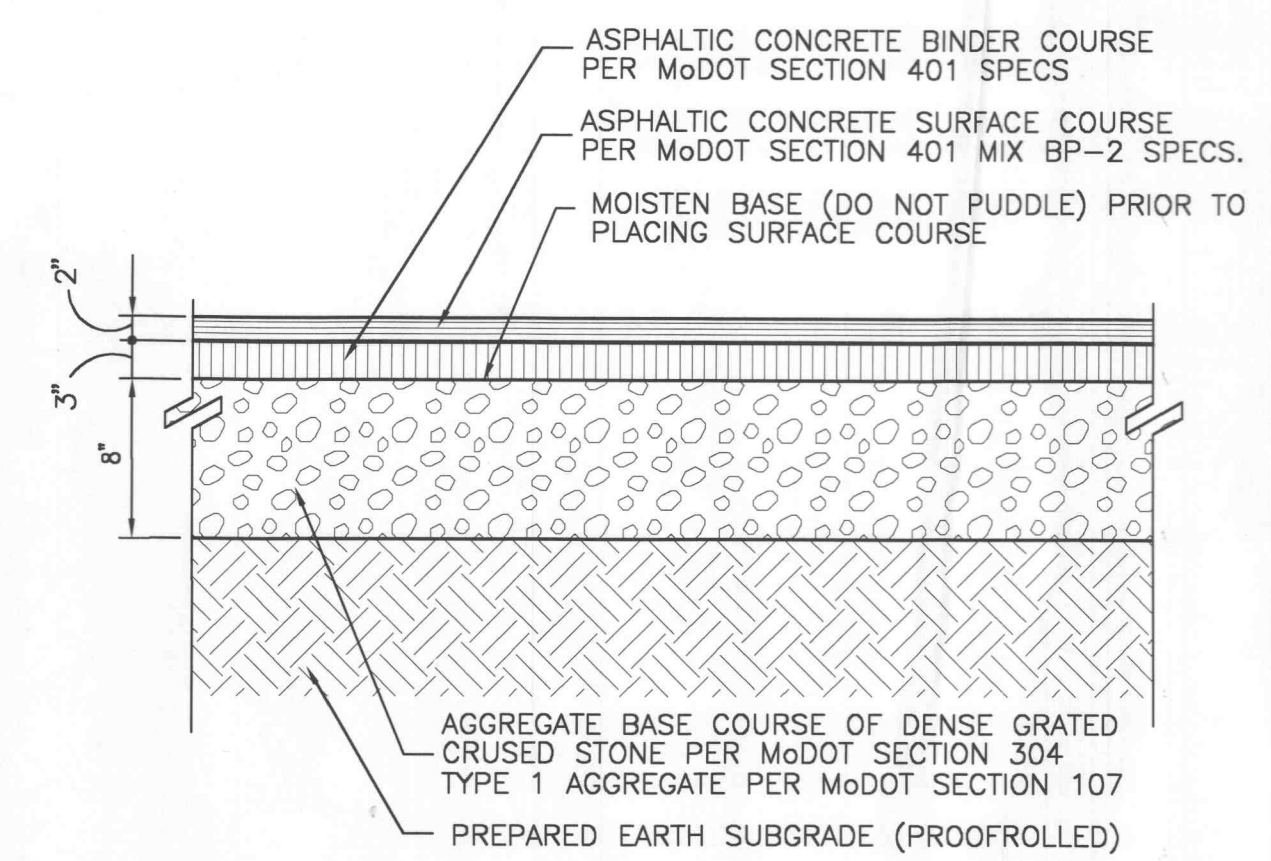
ISSUE:

#	Date:	Description:
1	2/13/04	City of O'Fallon Comments
2	2/13/04	Duckett Creek Sanitary District Comments
3	2/13/04	Cottleville Fire Protection District Comments
4	2/13/04	MoDot Comments
5	2/13/04	Corps of Engineers Comments
6	3/15/04	Duckett Creek Sanitary District Comments
7	3/18/04	Revisions per Architect



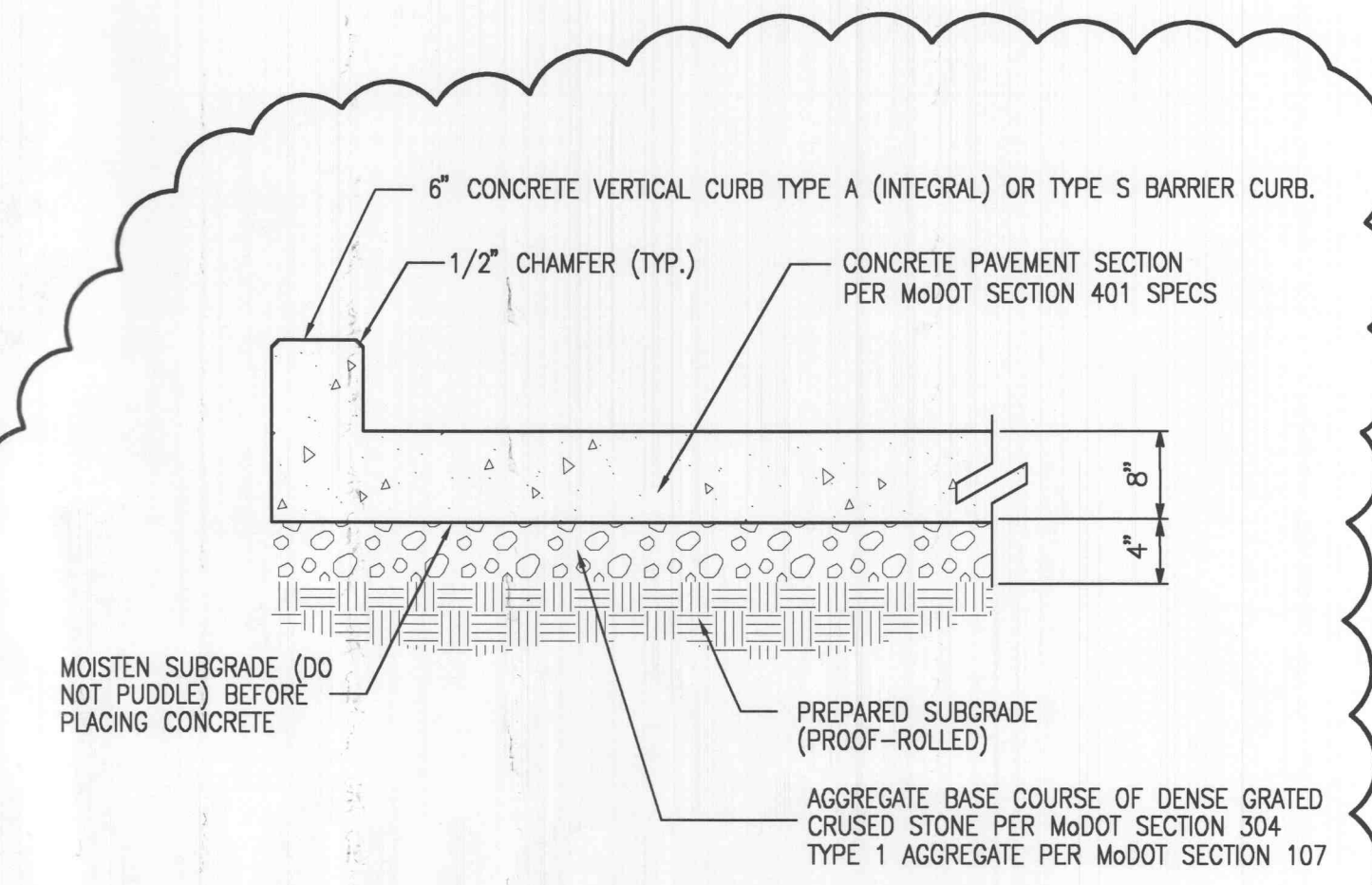
COMPACT SUBGRADE TO 90% OF GREATER OF MAX. DRY DENSITY PER ASTM D-1557  
COMPACT BASE TO 90% OF GREATER OF RELATIVE DRY DENSITY PER ASTM D-2049

**1 Asphaltic Concrete Pavement**  
Scale: Not To Scale



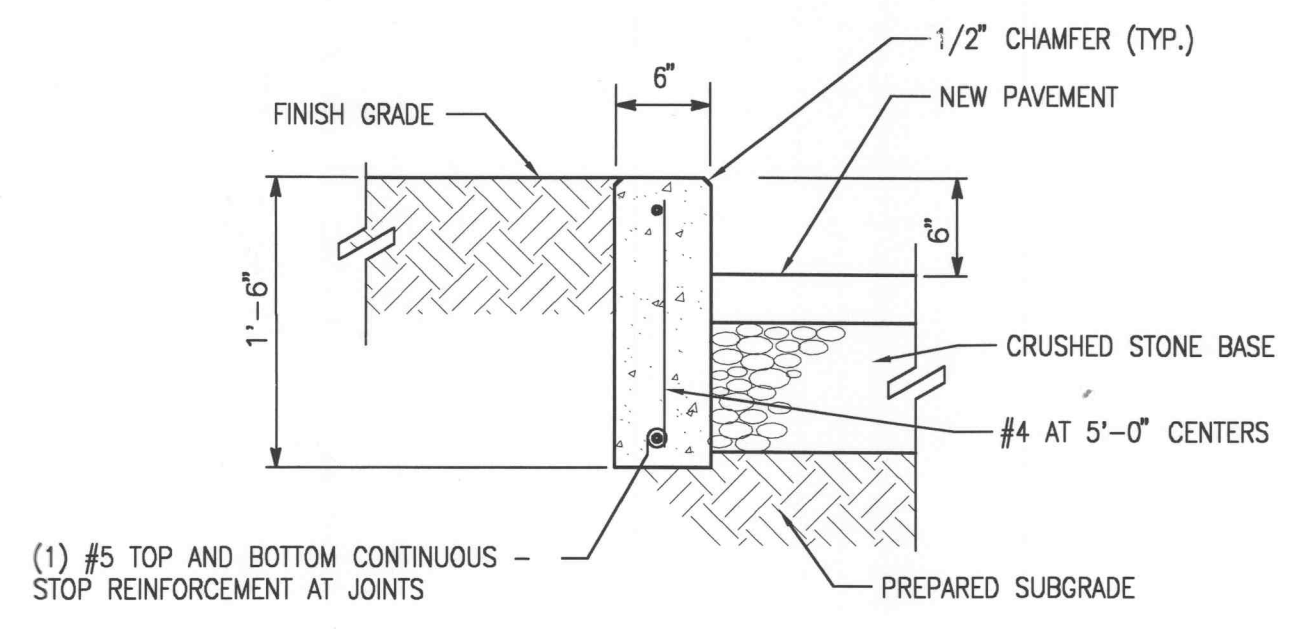
COMPACT SUBGRADE TO 90% OF GREATER OF MAX. DRY DENSITY PER ASTM D-1557  
COMPACT BASE TO 90% OF GREATER OF RELATIVE DRY DENSITY PER ASTM D-2049

**2 Heavy Duty Asphaltic Concrete Pavement**  
Scale: Not To Scale



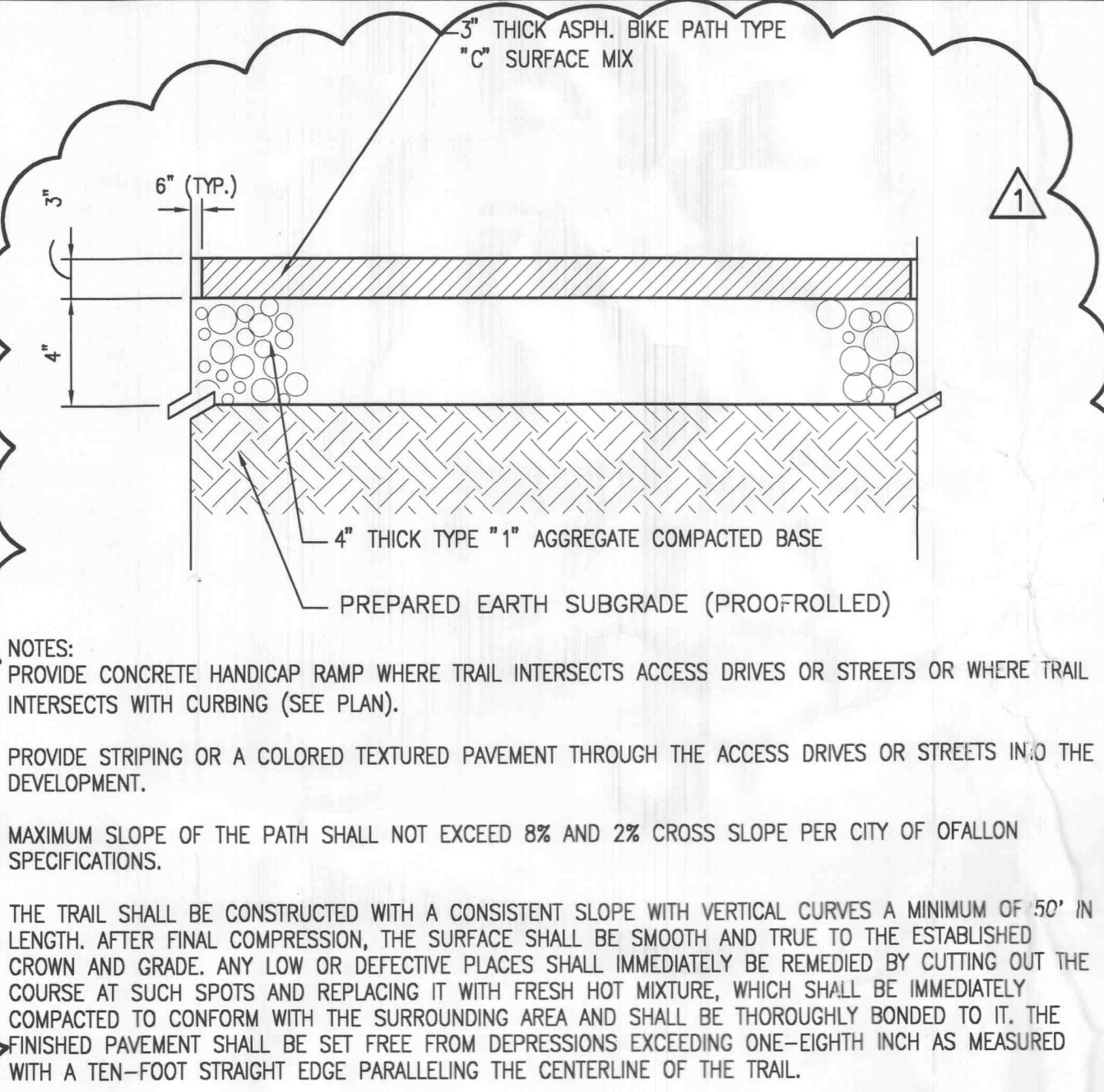
COMPACT SUBGRADE TO 90% OF GREATER OF MAX. DRY DENSITY PER ASTM D-1557  
COMPACT BASE TO 90% OF GREATER OF RELATIVE DRY DENSITY PER ASTM D-2049

**3 MoDot Concrete Entrance Pavement**  
Scale: Not To Scale



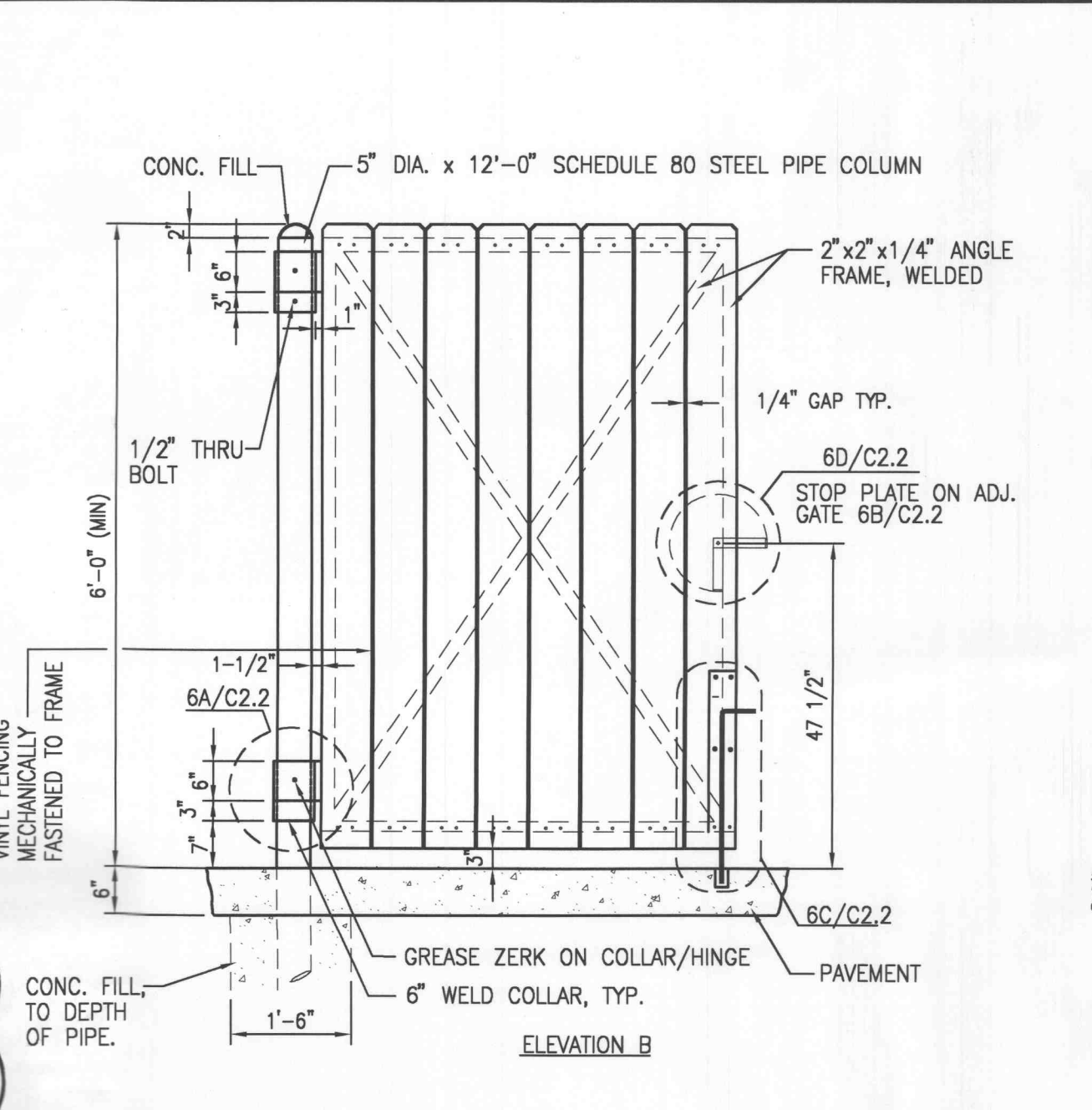
COMPACT SUBGRADE TO 90% OF GREATER OF MAX. DRY DENSITY PER ASTM D-1557  
COMPACT BASE TO 90% OF GREATER OF RELATIVE DRY DENSITY PER ASTM D-2049

**4 Concrete Vertical Curb**  
Scale: Not To Scale

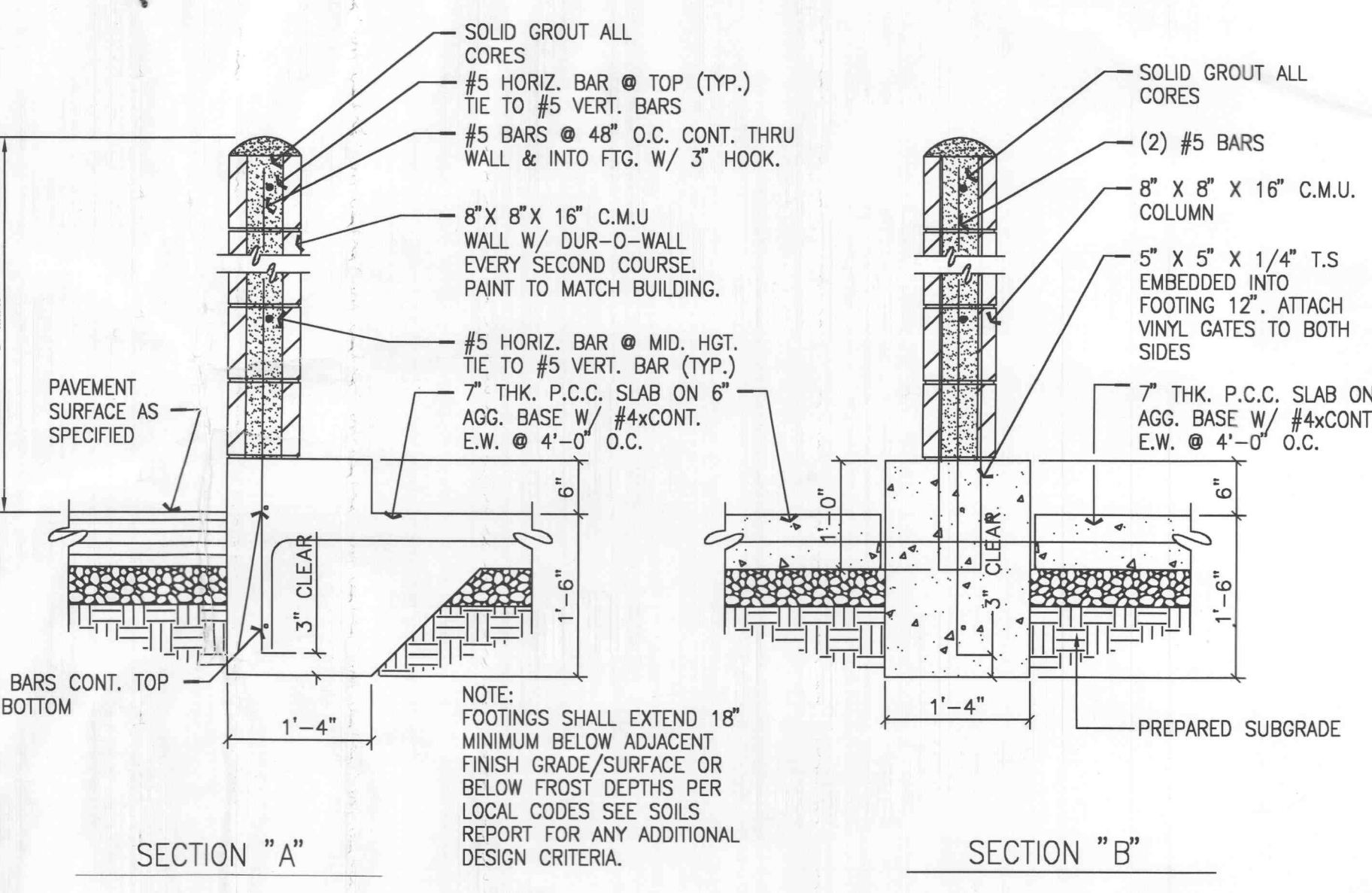


NOTES:  
PROVIDE CONCRETE HANDICAP RAMP WHERE TRAIL INTERSECTS ACCESS DRIVES OR STREETS OR WHERE TRAIL INTERSECTS WITH CURBING (SEE PLAN).  
PROVIDE STRIPING OR A COLORED TEXTURED PAVEMENT THROUGH THE ACCESS DRIVES OR STREETS IN THE DEVELOPMENT.  
MAXIMUM SLOPE OF THE PATH SHALL NOT EXCEED 8% AND 2% CROSS SLOPE PER CITY OF OFALLON SPECIFICATIONS.  
THE TRAIL SHALL BE CONSTRUCTED WITH A CONSISTENT SLOPE WITH VERTICAL CURVES A MINIMUM OF 50' IN LENGTH. AFTER FINAL COMPRESSION, THE SURFACE SHALL BE SMOOTH AND TRUE TO THE ESTABLISHED CROWN AND GRADE. ANY LOW OR DEFECTIVE PLACES SHALL IMMEDIATELY BE REMEDIED BY CUTTING OUT THE COURSE AT SUCH SPOTS AND REPLACING IT WITH FRESH HOT MIXTURE, WHICH SHALL BE IMMEDIATELY COMPACTED TO CONFORM WITH THE SURROUNDING AREA AND SHALL BE THOROUGHLY BONDED TO IT. THE FINISHED PAVEMENT SHALL BE SET FREE FROM DEPRESSIONS EXCEEDING ONE-EIGHTH INCH AS MEASURED WITH A TEN-FOOT STRAIGHT EDGE PARALLEL TO THE CENTERLINE OF THE TRAIL.

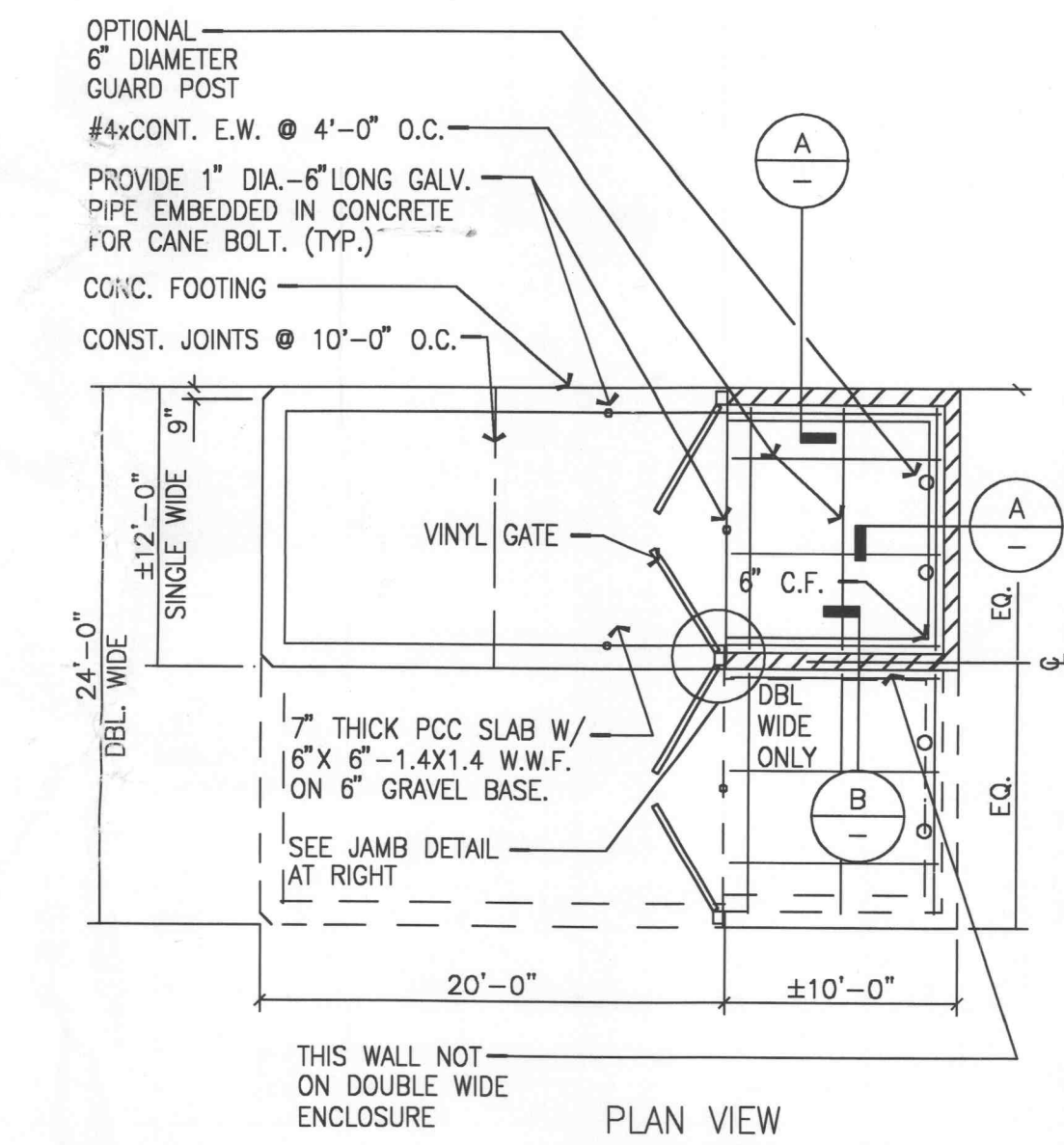
**5 6\"/>**



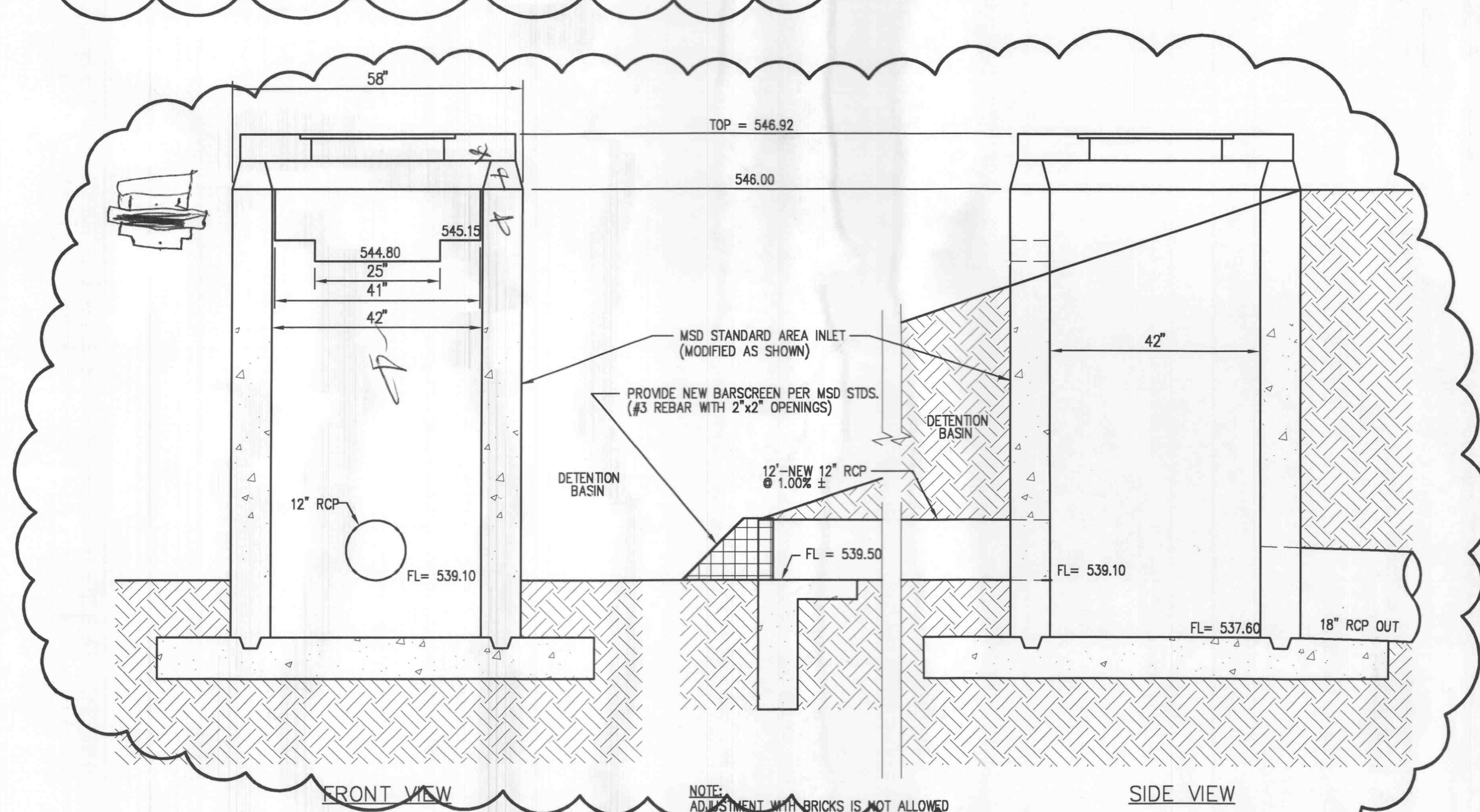
**6 Trash Enclosure Detail**  
Scale: Not To Scale



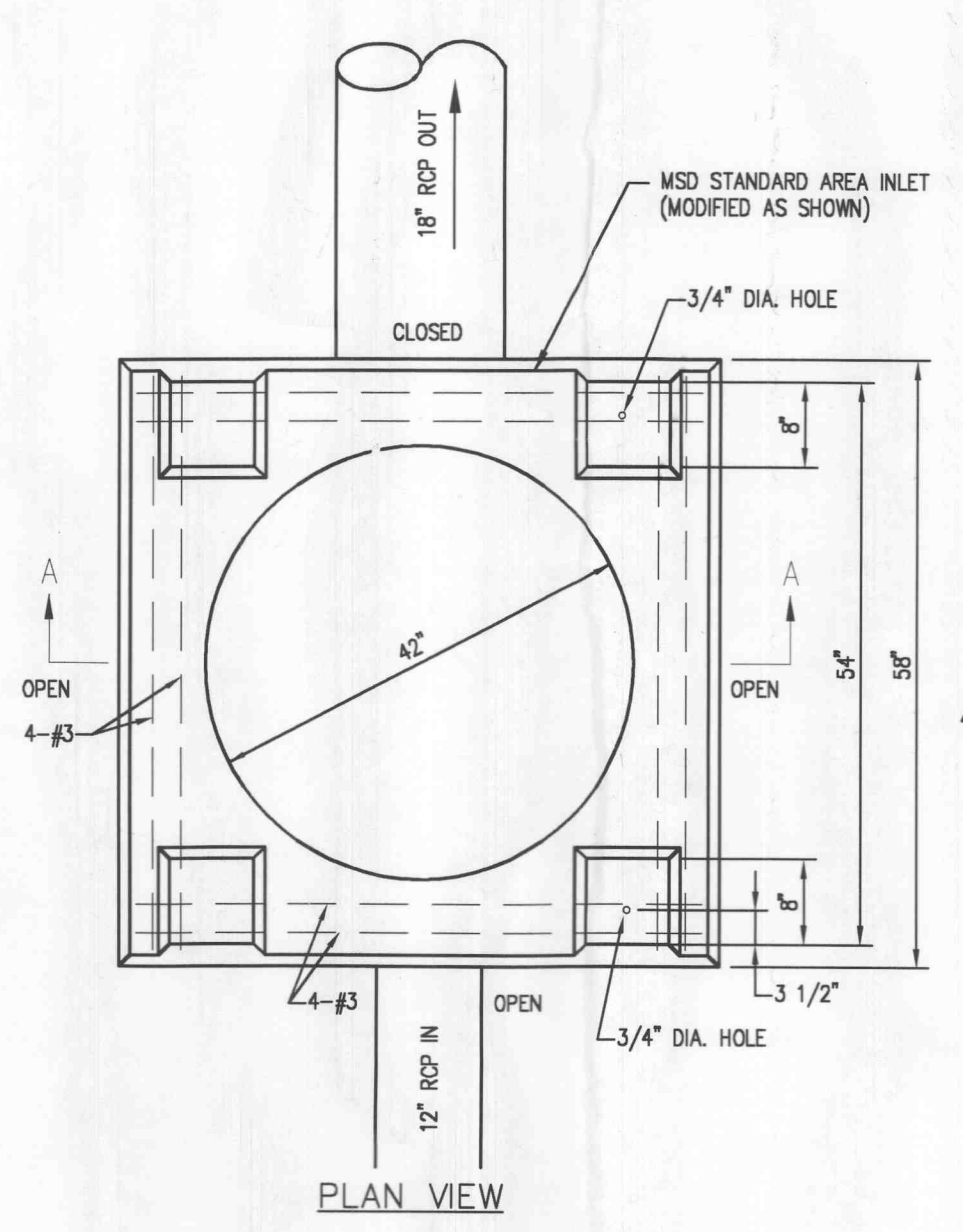
**SECTION A** and **SECTION B**



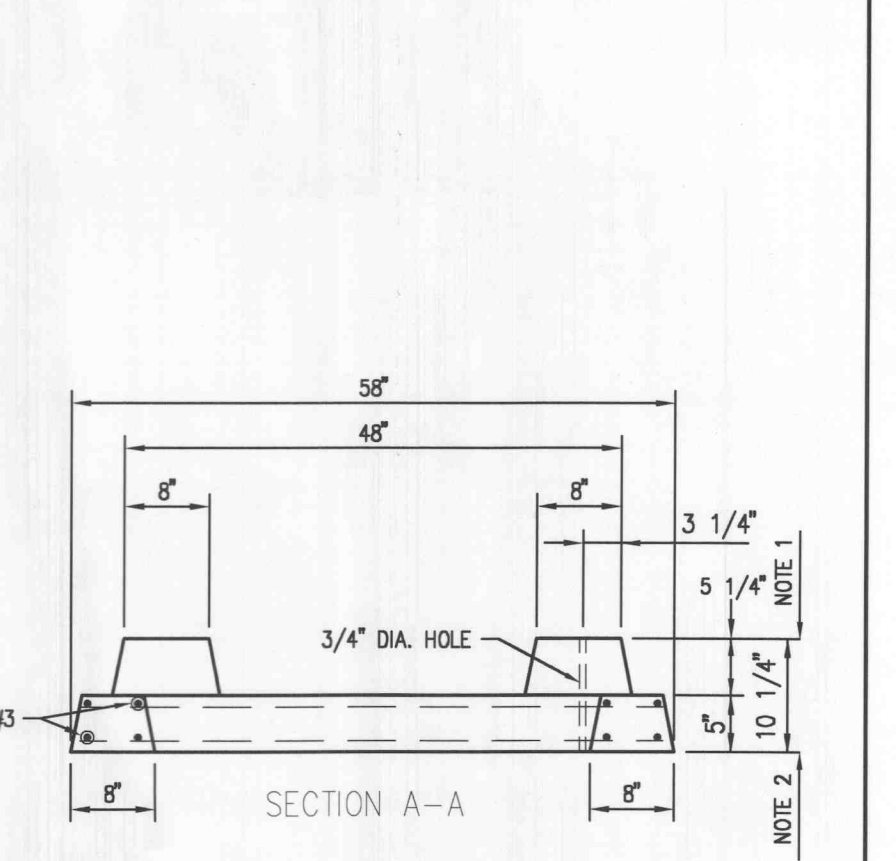
**PLAN VIEW**



**7 DETENTION OUTLET STRUCTURE DETAIL**  
Scale: Not To Scale

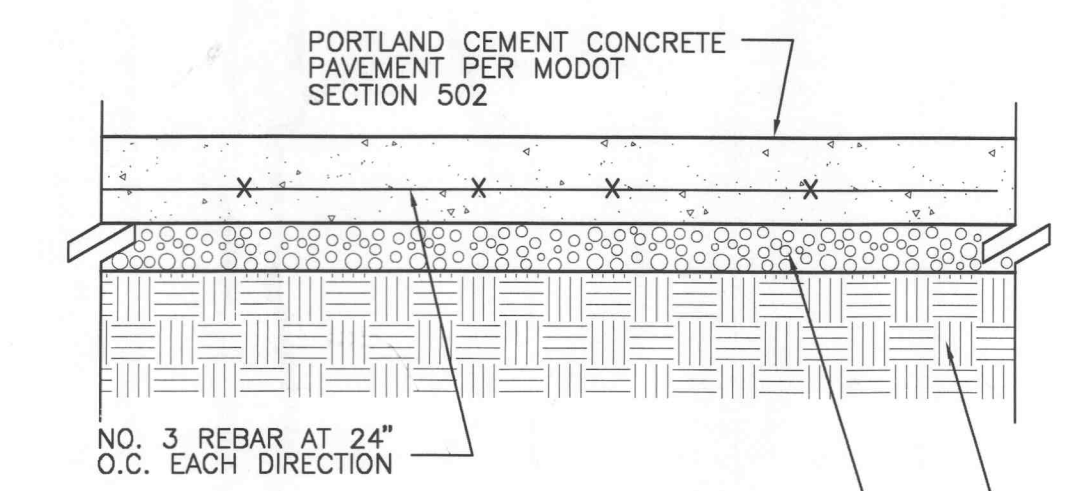


**PLAN VIEW**



NOTES:  
1. SET STANDARD INLET STONE IN 3/4\"/>

	6\"/>
CONCRETE PAVEMENT	6"
AGGREGATE BASE COURSE	4"
MINIMUM 28 DAY STRENGTH	3000 PSI



COMPACT SUBGRADE TO 90% OF GREATER OF MAX. DRY DENSITY PER ASTM D-1557  
COMPACT BASE TO 95% MODIFIED PROCTOR PER ASTM D-1557

**9 Concrete Pavement Detail (Trash Enclosures)**  
Scale: Not To Scale

CALL BEFORE YOU DIG - DRILL - BLAST  
1-800-344-7483  
(TOLL FREE)  
MISSOURI ONE CALL SYSTEM, INC.  
\* FIBER OPTIC PRESENT \*  
MoDOT (314) 340-4100

PROJECT:  
PERSIMMON POINTE  
HOTEL DEVELOPMENT  
JAMES T. BIKE  
REGISTERED PROFESSIONAL ENGINEER  
NUMBER  
E-13347

#4130 HIGHWAY 40-61  
O'FALLON, MO

Date: 12-30-03  
Design/Drawn: DB  
Approved: JTB  
Book No.:

SHEET TITLE:  
**DETAILS**

SHEET NUMBER:  
**C8**  
SHEET 12 OF 36

Project No.: 299163.12  
Planning & Zoning File: #3103.03

XRef Files: [drawn: P:\999\99163.12-hwy 40 - rte.k\img\299163-DLS.DWG | DATE: 02/13/2004 | TIME: 14:25 |