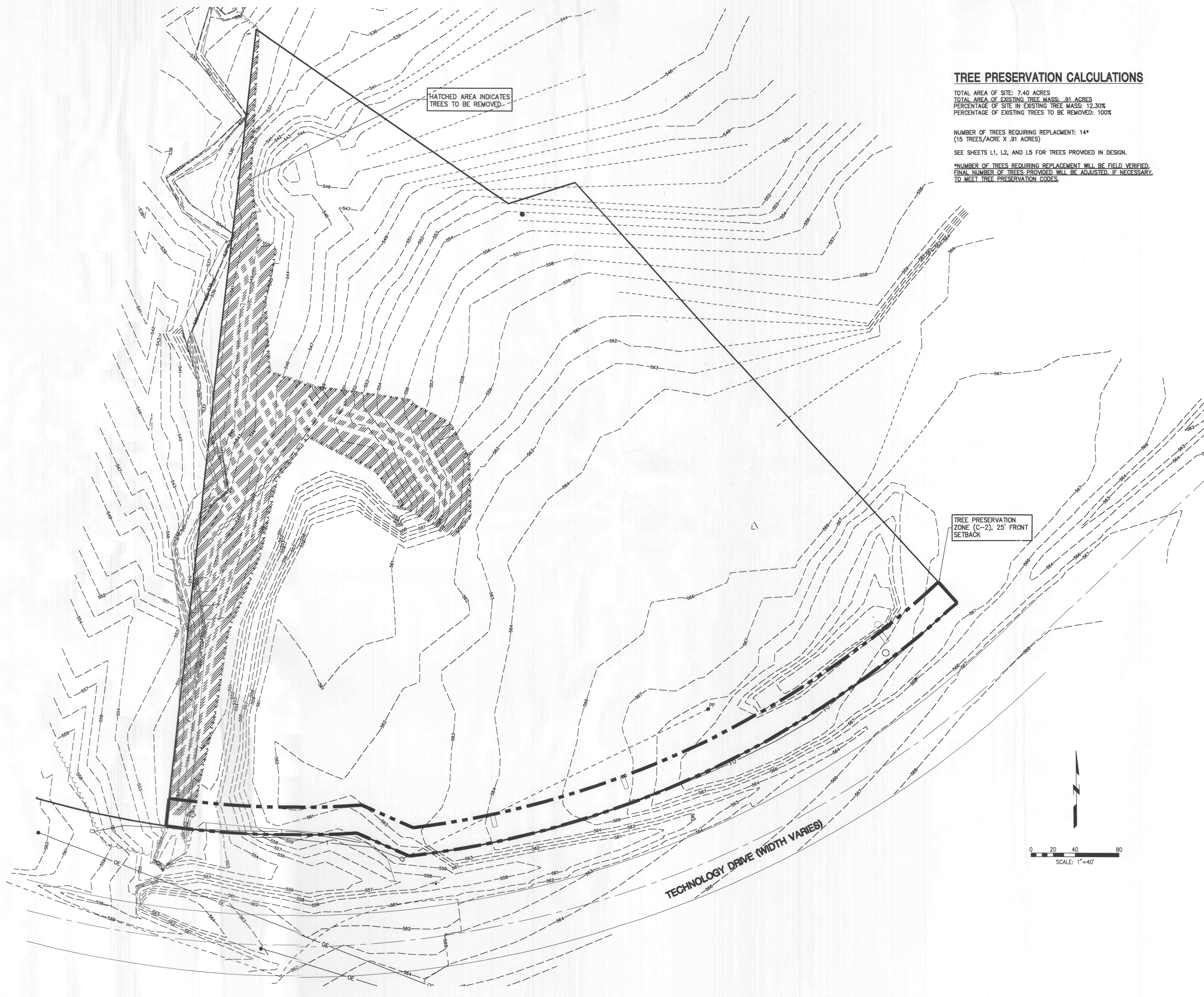


Xref Files: \\299163-cds |
| bscorpnet\p\2003\299163\12-440 development\dwg\1-2-3-299163-SITE LAND PLANS.DWG | DATE: 12/22/2003 | Time: 18:25 |



HATCHED AREA INDICATES TREES TO BE REMOVED.

TREE PRESERVATION CALCULATIONS

TOTAL AREA OF SITE: 7.40 ACRES
TOTAL AREA OF EXISTING TREE MASS: .91 ACRES
PERCENTAGE OF SITE IN EXISTING TREE MASS: 12.30%
PERCENTAGE OF EXISTING TREES TO BE REMOVED: 100%

NUMBER OF TREES REQUIRING REPLACEMENT: 14*
(15 TREES/ACRE X .91 ACRES)

SEE SHEETS L1, L2, AND L5 FOR TREES PROVIDED IN DESIGN.

*NUMBER OF TREES REQUIRING REPLACEMENT WILL BE FIELD VERIFIED.
FINAL NUMBER OF TREES PROVIDED WILL BE ADJUSTED, IF NECESSARY,
TO MEET TREE PRESERVATION CODES.

TREE PRESERVATION ZONE (C-2), 25' FRONT SETBACK

ENGINEERS
ARCHITECTS
SURVEYORS
SCIENTISTS



Farnsworth GROUP

20 ALLEN AVENUE, SUITE 200
ST LOUIS, MISSOURI 63119
(314) 962-7900 / (314) 962-1253 Fax

www.f-w.com

ISSUE:

#	Date	Description
1	2/13/04	City of O'Fallon Comments
2	2/13/04	Duckett Creek Sanitary District Comments
3	2/13/04	Cottleville Fire Protection District Comments
4	2/13/04	MoDot Comments
5	2/13/04	Corps of Engineers Comments



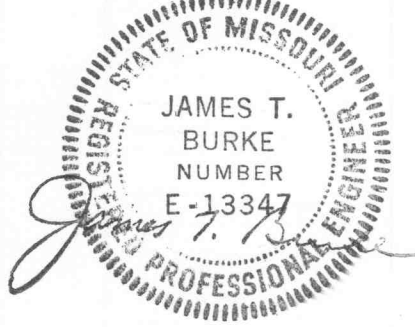
CALL BEFORE YOU DIG - DRILL - BLAST
1-800-344-7483
(TOLL FREE)

MISSOURI ONE CALL SYSTEM, INC.

* FIBER OPTIC PRESENT *
MoDOT (314) 340-4100

PROJECT:

PERSIMMON POINTE HOTEL DEVELOPMENT



#4130 HIGHWAY 40-61
O'FALLON, MO

Date: 12-30-03

Design/Drawn: BRD

Approved: BRD

Book No.:

SHEET TITLE:

TREE REMOVAL PLAN

SHEET NUMBER:

L3

SHEET 27 OF 36

Project No.: 29916312
Planning & Zoning File: #3103.03