

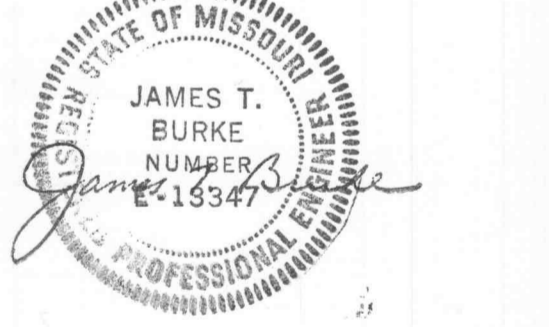
ISSUE:

#	Date	Description
1	2/13/04	City of O'Fallon Comments
2	2/13/04	Duckett Creek Sanitary District Comments
3	2/13/04	Cottleville Fire Protection District Comments
4	2/13/04	MoDot Comments
5	2/13/04	Corps of Engineers Comments
6	3/15/04	Duckett Creek Sanitary District Comments
7	3/18/04	Revisions per Architect

CALL BEFORE YOU DIG - DRILL - BLAST
1-800-344-7483
(TOLL FREE)

MISSOURI ONE CALL SYSTEM, INC.
* FIBER OPTIC PRESENT *
MoDOT (314) 340-4100

PROJECT:
PERSIMMON POINTE HOTEL DEVELOPMENT



#4130 HIGHWAY 40-61
O'FALLON, MO

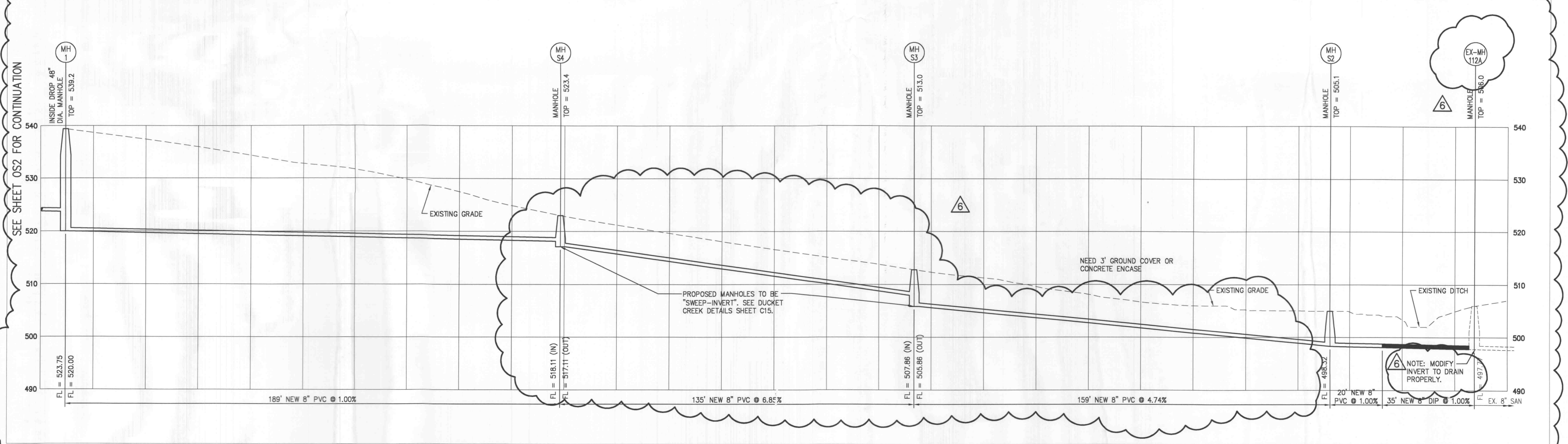
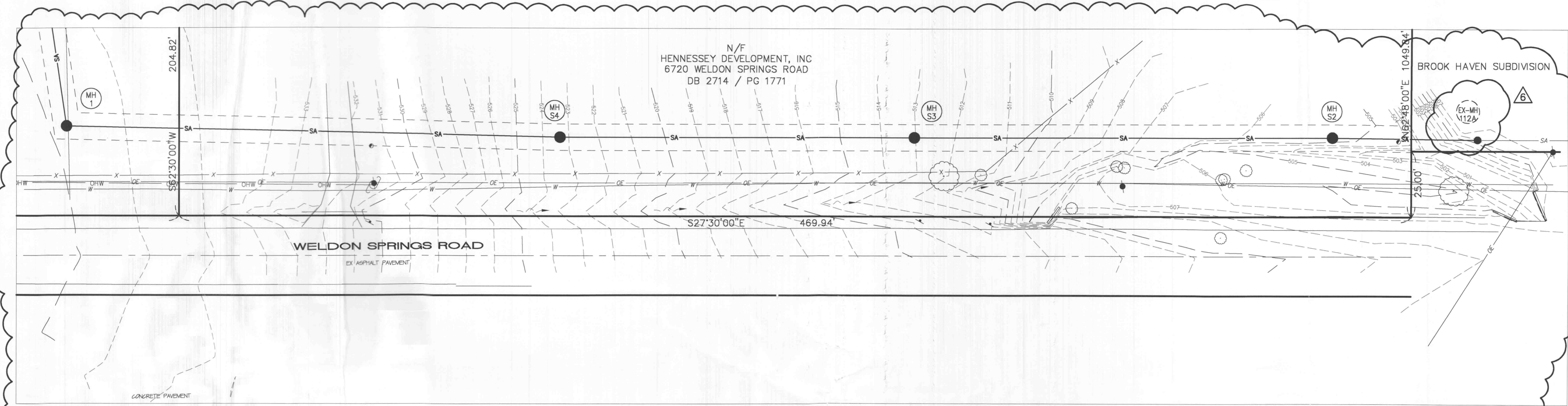
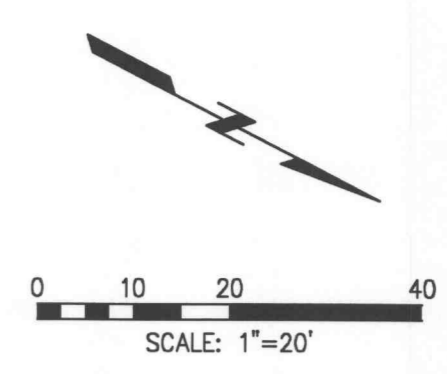
Date: 12-30-03
Design/Drawn: DB
Approved: JTB
Book No.:

SHEET TITLE:
SANITARY SEWER PROFILE

SHEET NUMBER:

OS3
SHEET 33 OF 36

Project No.: 299163.12
Planning & Zoning File: #3103.03



SEE SHEET OS2 FOR CONTINUATION

NOTE: MODIFY INVERT TO DRAIN PROPERLY.

SCALE:
HORZ: 1" = 20'
VERT: 1" = 10'

Xref File: z:\99163\plan-11-25-03-r14 |
 C:\Program Files\Autodesk\AutoCAD 2004\acad.plt |
 P:\99163\12-hwy 40\ris.k\dwg\299163\SSSIE-SEMDWG | DATE: 02/25/2004 | Time: 21:15 |