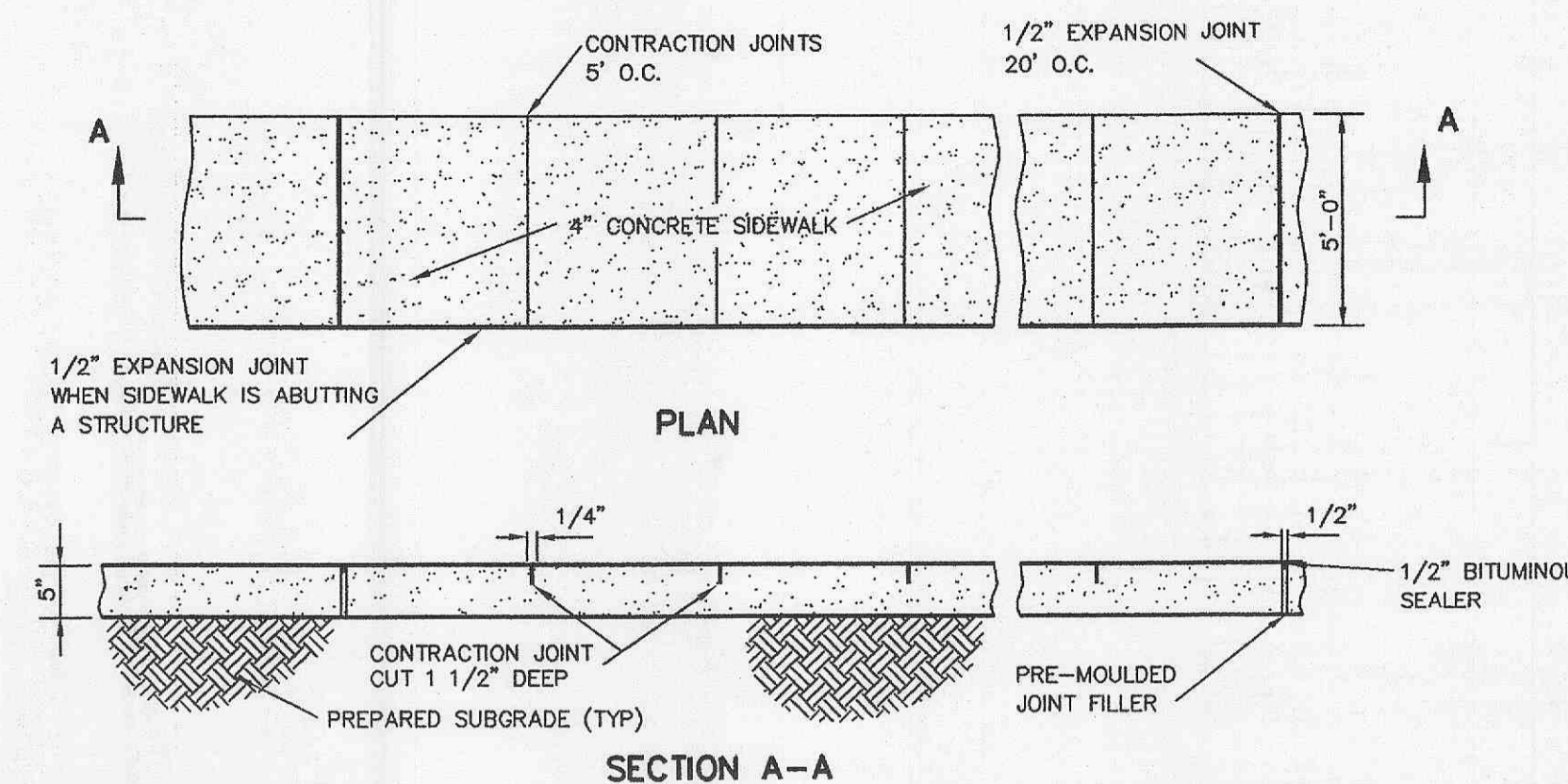
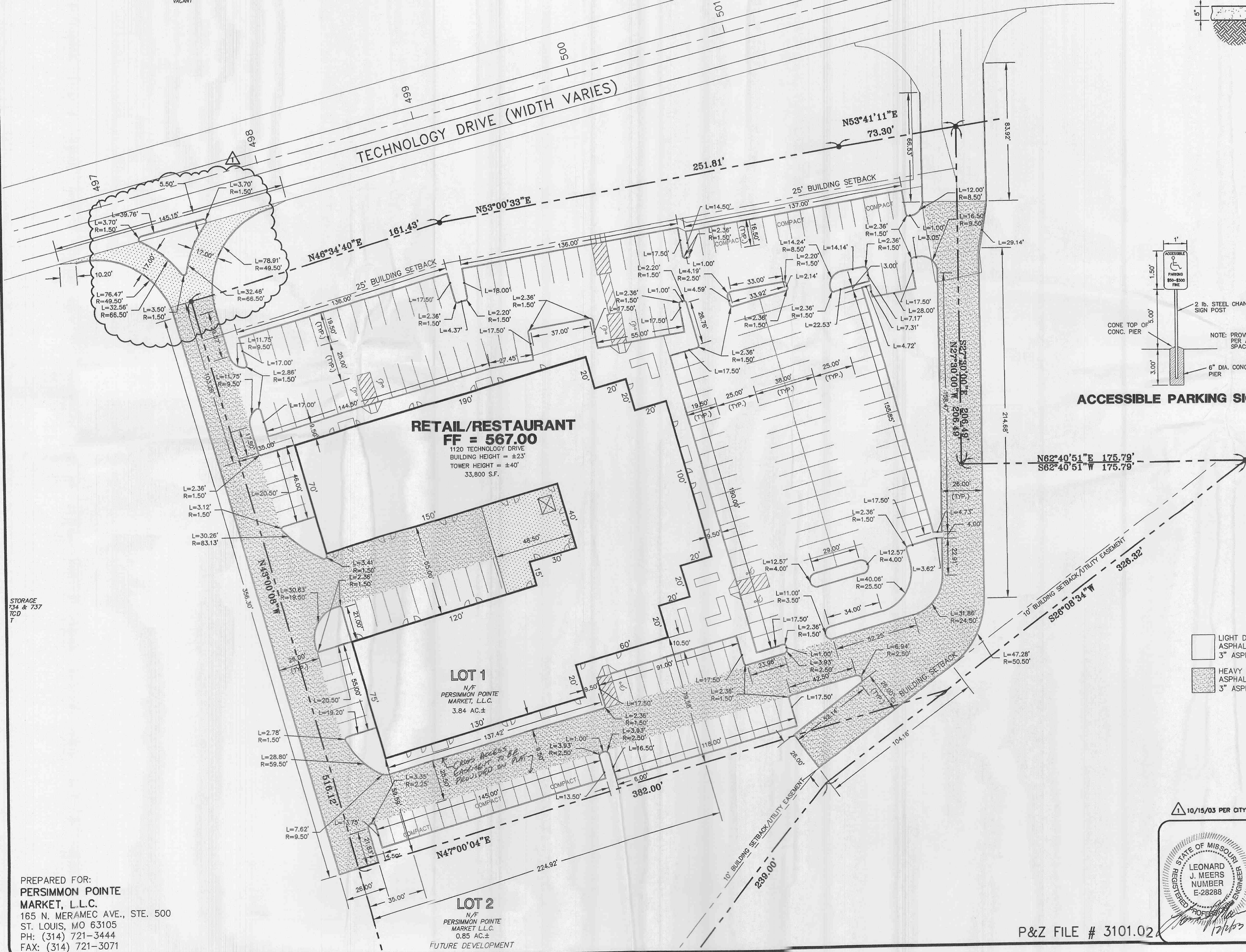


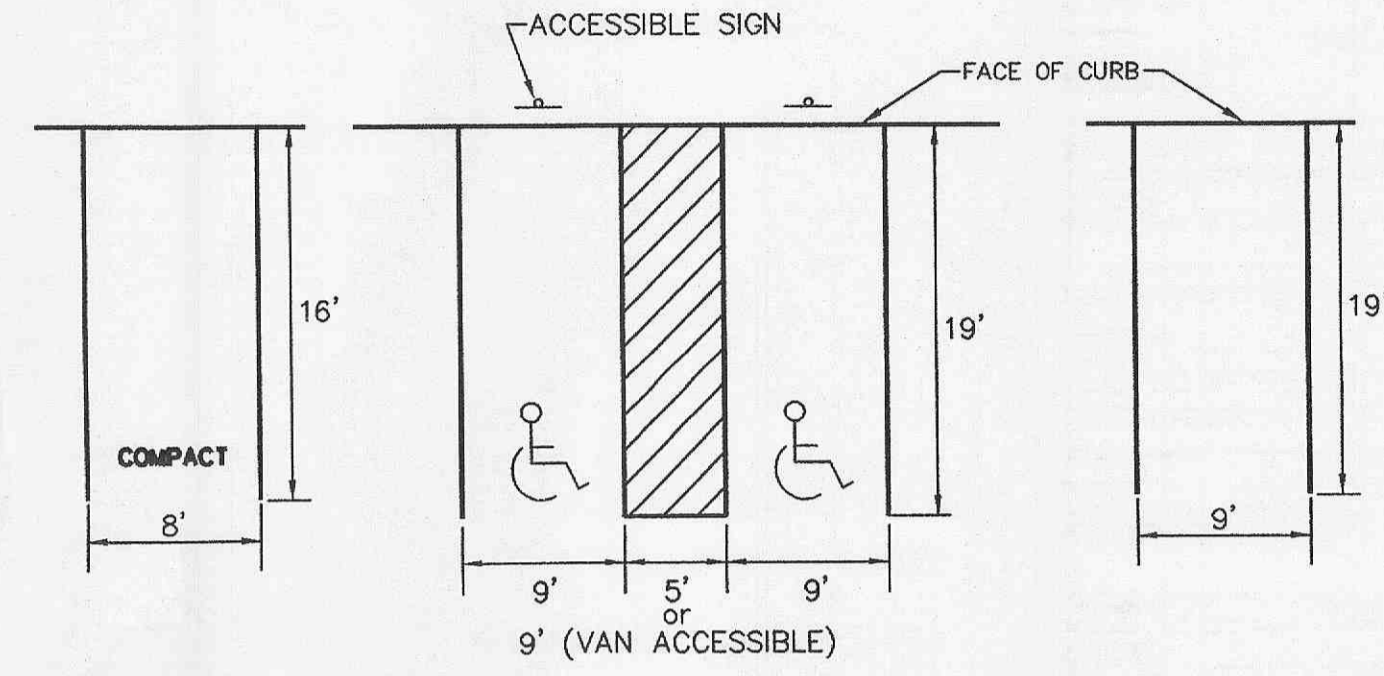
NOTE: ALL DIMENSIONS ARE TO BACK OF CURB UNLESS NOTED

NOTE: SEE SHEET C4 FOR ADDITIONAL ENTRANCE GEOMETRICS

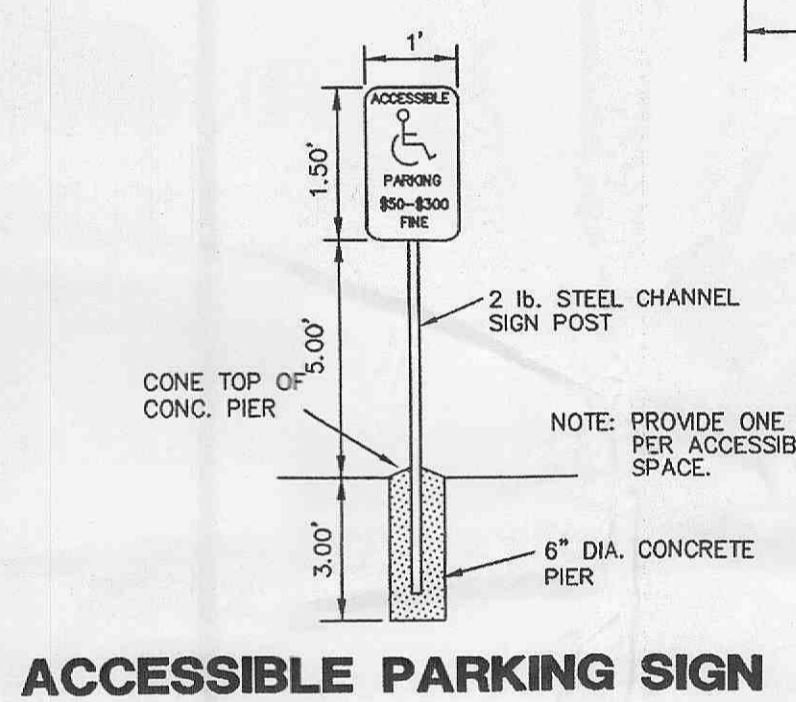
N/F
KELLEN-BECK PROPERTIES, LLC
DB. 2476, PG. 1717
ZONED HTCD
VACANT



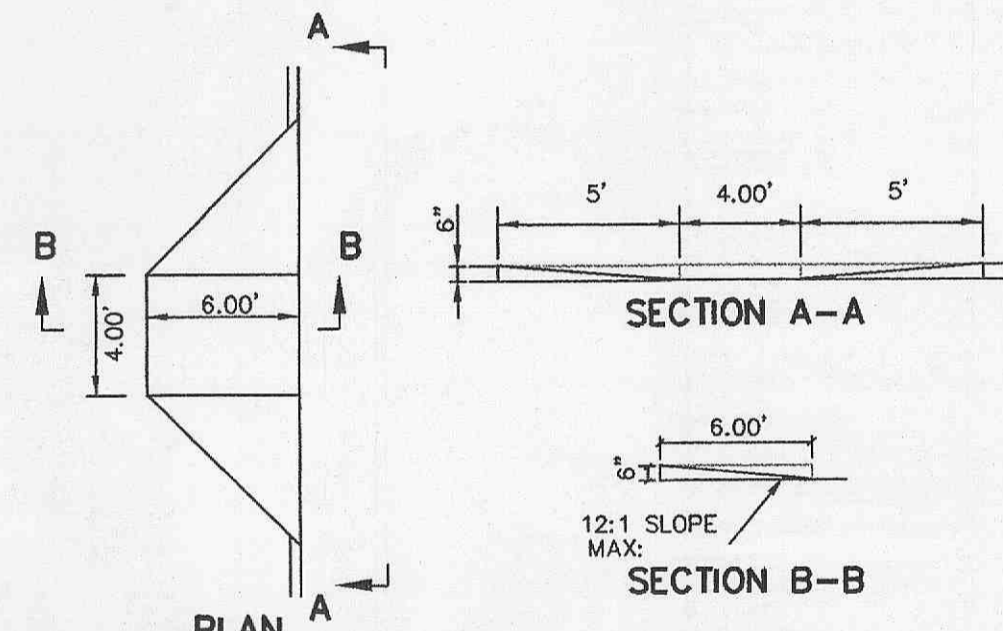
DETAIL OF CONCRETE SIDEWALK



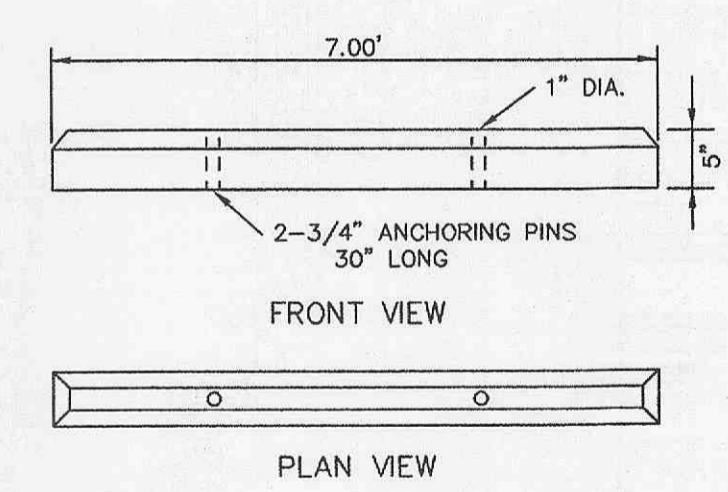
TYPICAL PARKING STALLS



ACCESSIBLE PARKING SIGN



CURB RAMP DETAIL

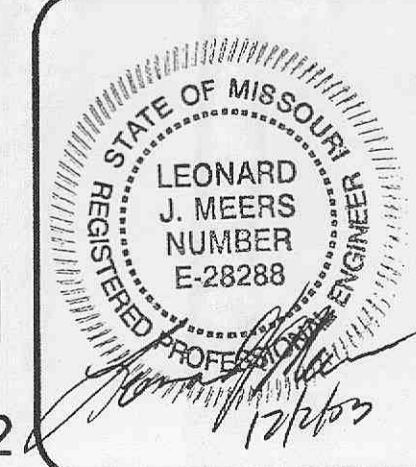


PRE-CAST PARKING BUMPER

- LIGHT DUTY ASPHALT PAVEMENT
3\"/>
- HEAVY DUTY ASPHALT PAVEMENT
3\"/>

J. R. GRIMES CONSULTING ENGINEERS, INC. AND THE UNDERSIGNED ENGINEER HAVE NO RESPONSIBILITY FOR SERVICES PROVIDED BY OTHERS TO IMPLEMENT THE IMPROVEMENTS SHOWN ON THIS PLAN AND ALL OTHER DRAWINGS WHERE THE UNDERSIGNED ENGINEER'S SEAL APPEARS. THE CONSTRUCTION MEANS AND METHODS ARE THE SOLE RESPONSIBILITY OF THE OWNER AND CONTRACTOR. J. R. GRIMES CONSULTING ENGINEERS, INC. HAS NO RESPONSIBILITY TO VERIFY FINAL IMPROVEMENTS AS SHOWN ON THIS PLAN UNLESS SPECIFICALLY ENGAGED AND AUTHORIZED TO DO SO BY THE OWNER OR CONTRACTOR.

10/15/03 PER CITY OF O'FALLON COMMENTS



PERSIMMON POINTE MARKET			
SITE GEOMETRICS			
J. R. GRIMES CONSULTING ENGINEERS, INC.			
DRAWN BY:	DATE:	CHECKED BY:	DATE:
KAN	09/12/03	LJM	09/12/03
JOB NUMBER:		SHEET:	
6751		C3	

P&Z FILE # 3101.02

PREPARED FOR:
PERSIMMON POINTE MARKET, L.L.C.
165 N. MERAMEC AVE., STE. 500
ST. LOUIS, MO 63105
PH: (314) 721-3444
FAX: (314) 721-3071

J:\06791\PLANS\03-6EO.dwg Tue Dec 02 07:20:09 2003 KENT_JN