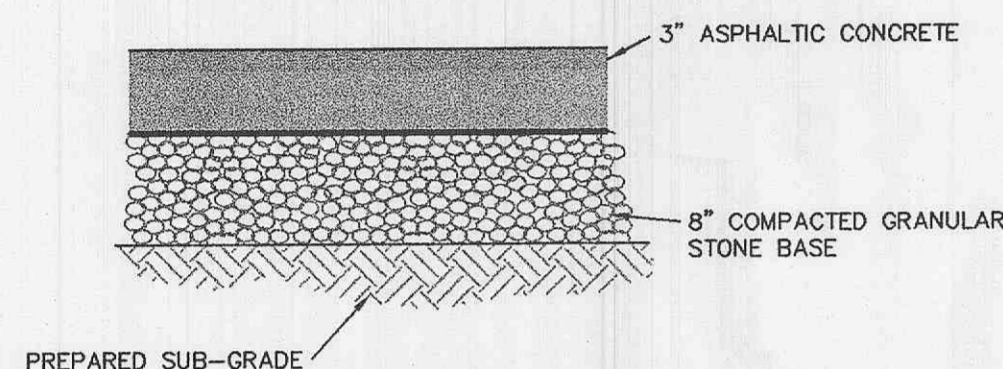
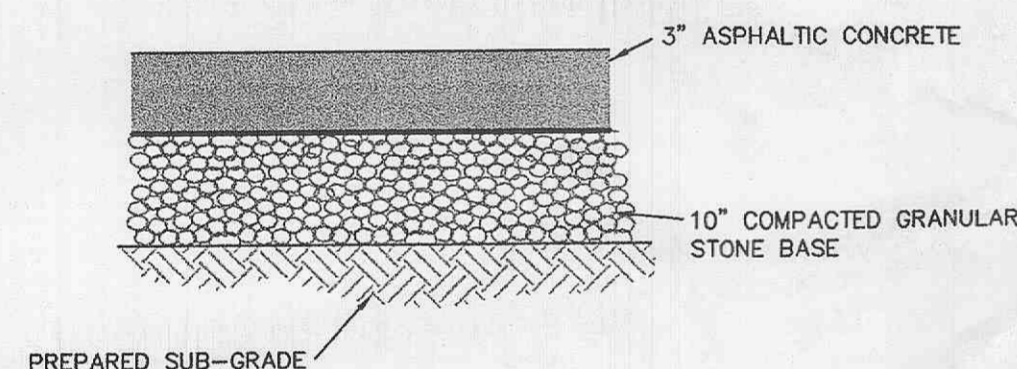


NOTE: EXPANSION JOINT MATERIAL SHALL BE INSTALLED IN THE WALK FOR ITS FULL WIDTH AND DEPTH AT INTERVALS OF APPROX. 50'. CONTROL JOINTS AT INTERVALS OF 1.5' TIMES ITS WIDTH.

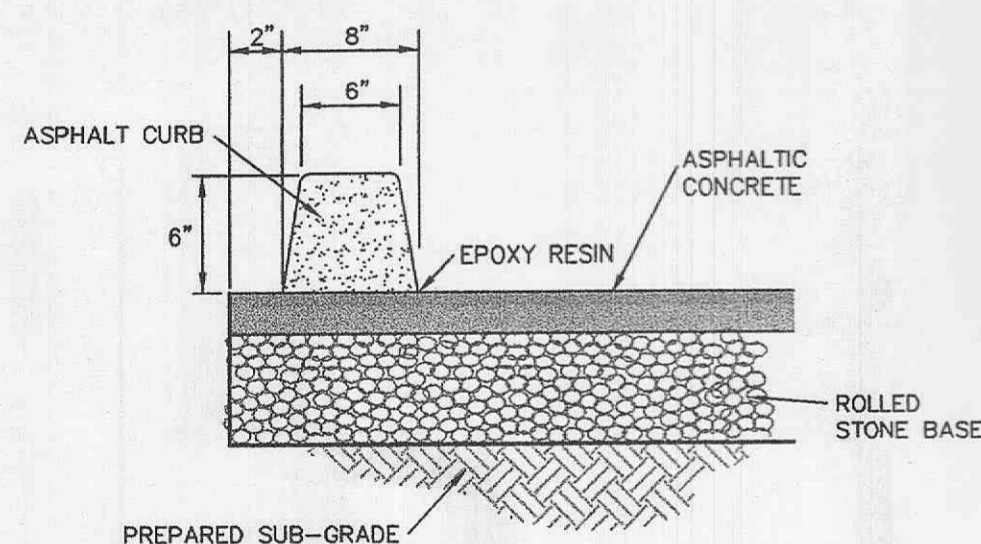
INTEGRAL SIDEWALK & CURB



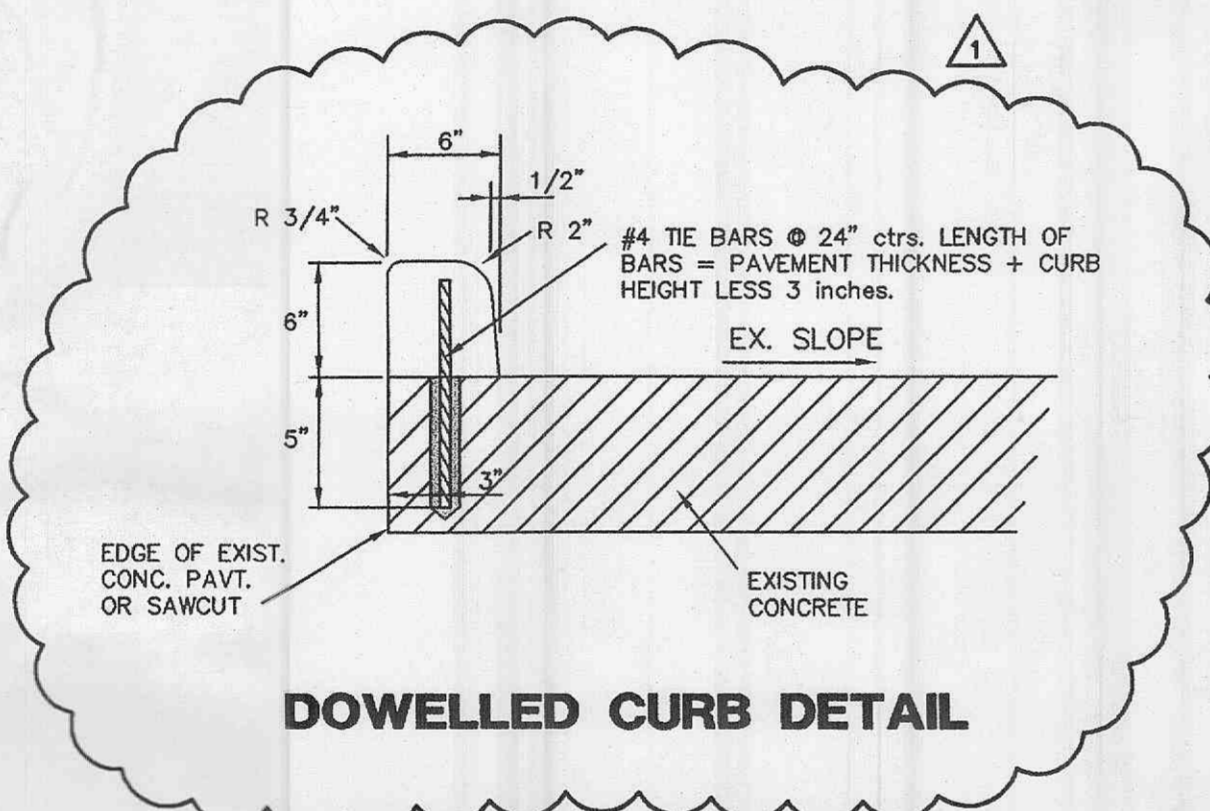
LIGHT DUTY ASPHALT PAVEMENT



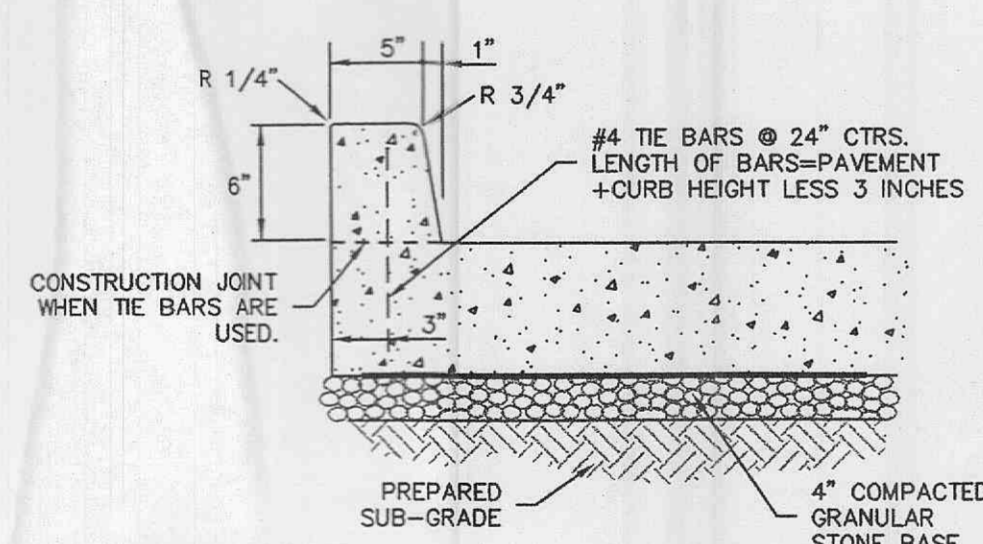
HEAVY DUTY ASPHALT PAVEMENT



ASPHALT CURBING DETAIL



DOWELLED CURB DETAIL

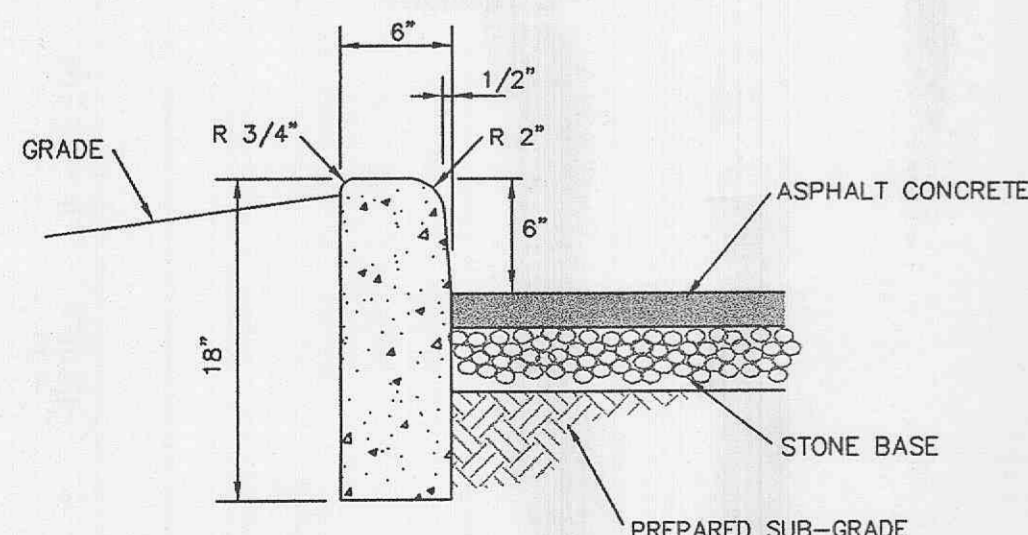


BARRIER CURBING DETAIL

PER STATE SPECIFICATIONS

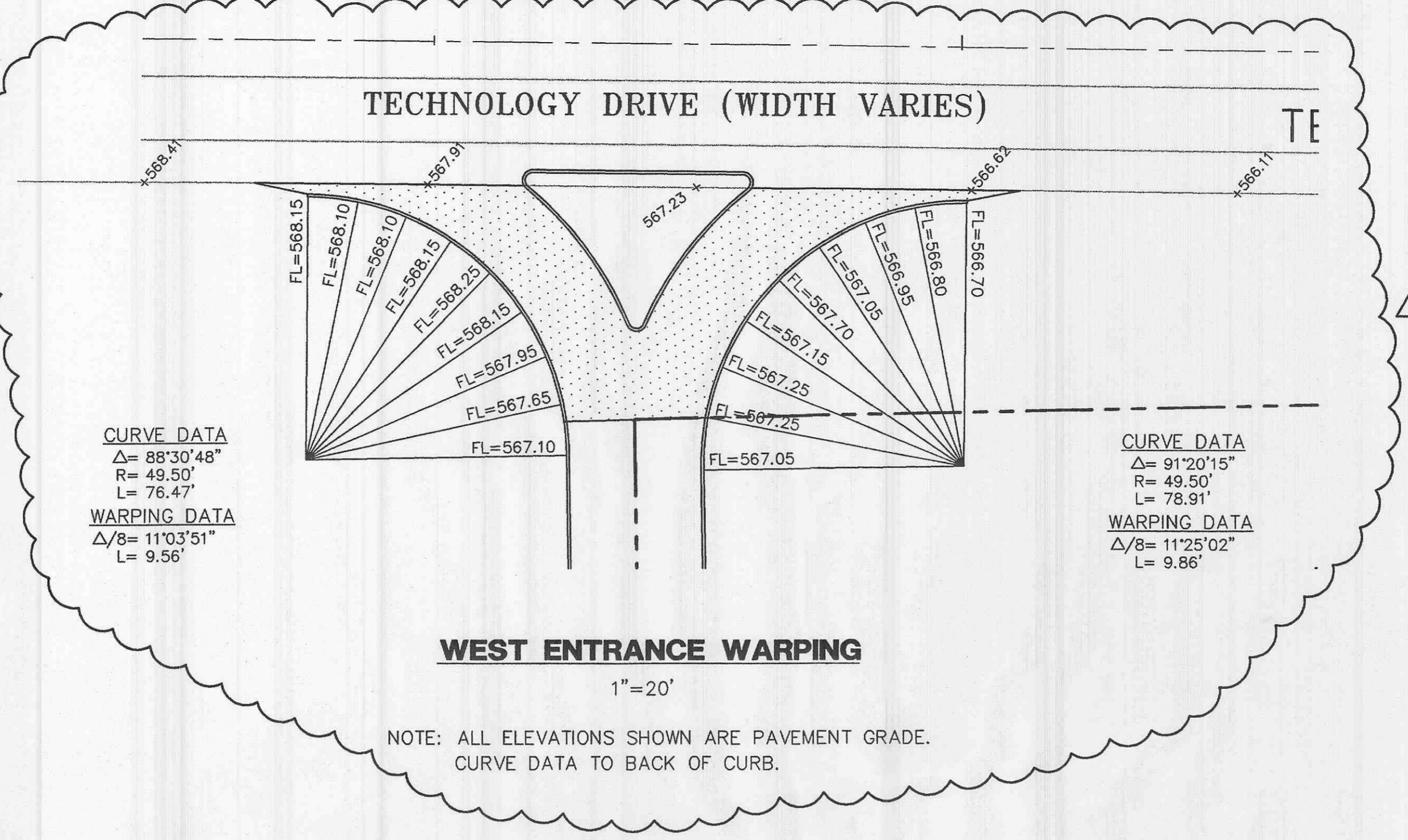
NOTES:

1. ALL CONCRETE SHALL BE MIN. FC=3000 P.S.I.
2. ALL CONSTRUCTION MATERIALS AND METHODS OF CONSTRUCTION SHALL BE IN ACCORDANCE WITH ST. LOUIS COUNTY DEPARTMENT OF HIGHWAYS & TRAFFIC.
3. ANY UNSUITABLE SOIL (AS DETERMINED BY SOILS ENGINEER) BELOW STRUCTURE SHALL BE REMOVED AND REPLACED WITH SELECT EARTHEN MATERIAL COMPACTED IN PLACE WITH VIBRATORY TAMPER.
4. PROVIDE 1/2" EXPANSION JOINTS AT 20' CENTERS.



18" BARRIER CURB AND PAVEMENT DETAIL

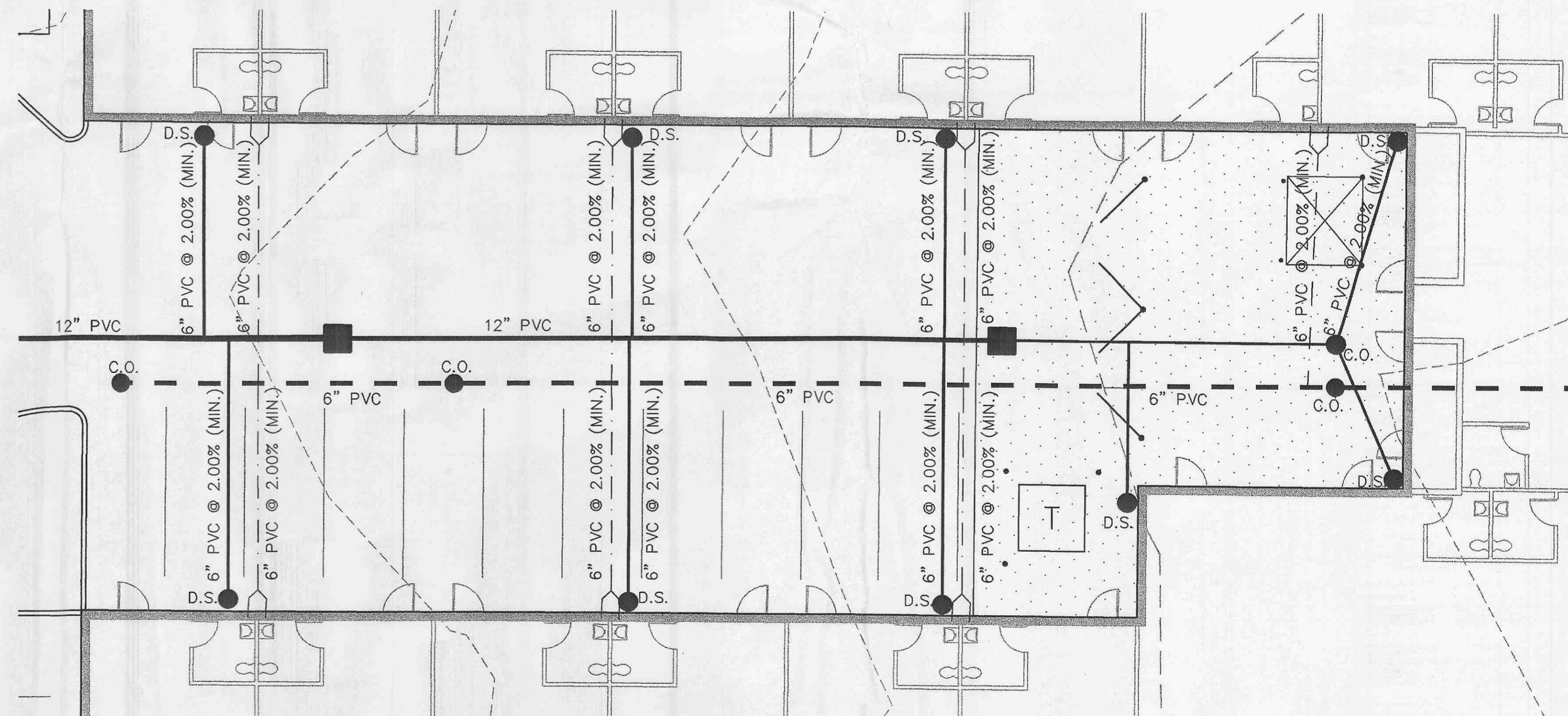
PREPARED FOR:
PERSIMMON POINTE MARKET, L.L.C.
 165 N. MERAMEC AVE., STE. 500
 ST. LOUIS, MO 63105
 PH: (314) 721-3444
 FAX: (314) 721-3071



WEST ENTRANCE WARPING

1"=20'

NOTE: ALL ELEVATIONS SHOWN ARE PAVEMENT GRADE. CURVE DATA TO BACK OF CURB.

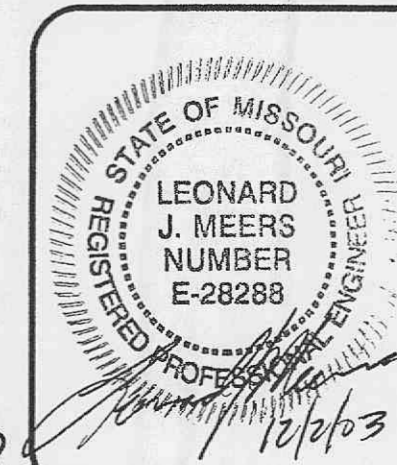


INTERIOR PARKING DETAIL

1"=10'

J. R. GRIMES CONSULTING ENGINEERS, INC. AND THE UNDERSIGNED ENGINEER HAVE NO RESPONSIBILITY FOR SERVICES PROVIDED BY OTHERS TO IMPLEMENT THE IMPROVEMENTS SHOWN ON THIS PLAN AND ALL OTHER DRAWINGS WHERE THE UNDERSIGNED ENGINEER'S SEAL APPEARS. THE CONSTRUCTION MEANS AND METHODS ARE THE SOLE RESPONSIBILITY OF THE OWNER AND CONTRACTOR. J. R. GRIMES CONSULTING ENGINEERS, INC. HAS NO RESPONSIBILITY TO VERIFY FINAL IMPROVEMENTS AS SHOWN ON THIS PLAN UNLESS SPECIFICALLY ENGAGED AND AUTHORIZED TO DO SO BY THE OWNER OR CONTRACTOR.

2 11/20/03 PER MODOT COMMENTS
 1 10/27/03 PER DESIGN REVISIONS



PERSIMMON POINTE MARKET	
PAVEMENT WARPING SHEET	
J. R. GRIMES	
CONSULTING ENGINEERS, INC.	
12300 OLD TESSON ROAD SUITE 300-D ST. LOUIS, MO. 63128 PH. (314) 849-6100 FAX (314) 849-6010 E-MAIL jrgeng@mlink.com	
DRAWN BY: KAN	DATE: 09/12/03
CHECKED BY: LJM	DATE: 09/12/03
JOB NUMBER: 6751	SHEET: C5

P&Z FILE # 3101.02