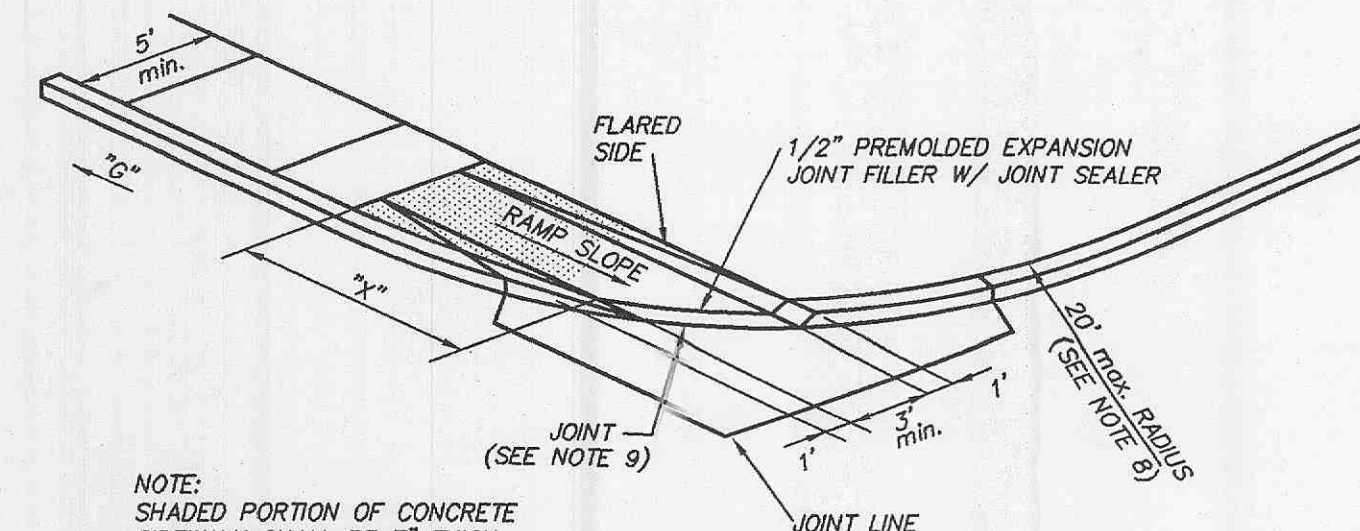


**WATER SERVICE SCHEMATIC**

"G" GRADE ALONG CURB (%)	"X" MIN. LENGTH OF RAMP SLOPE (L.F.)
NEGATIVE (-) VALUES	6
0 TO +1	7
+1.01 TO +2	8
+2.01 TO +3	10
+3.01 TO +4	12
GREATER THAN +4	15

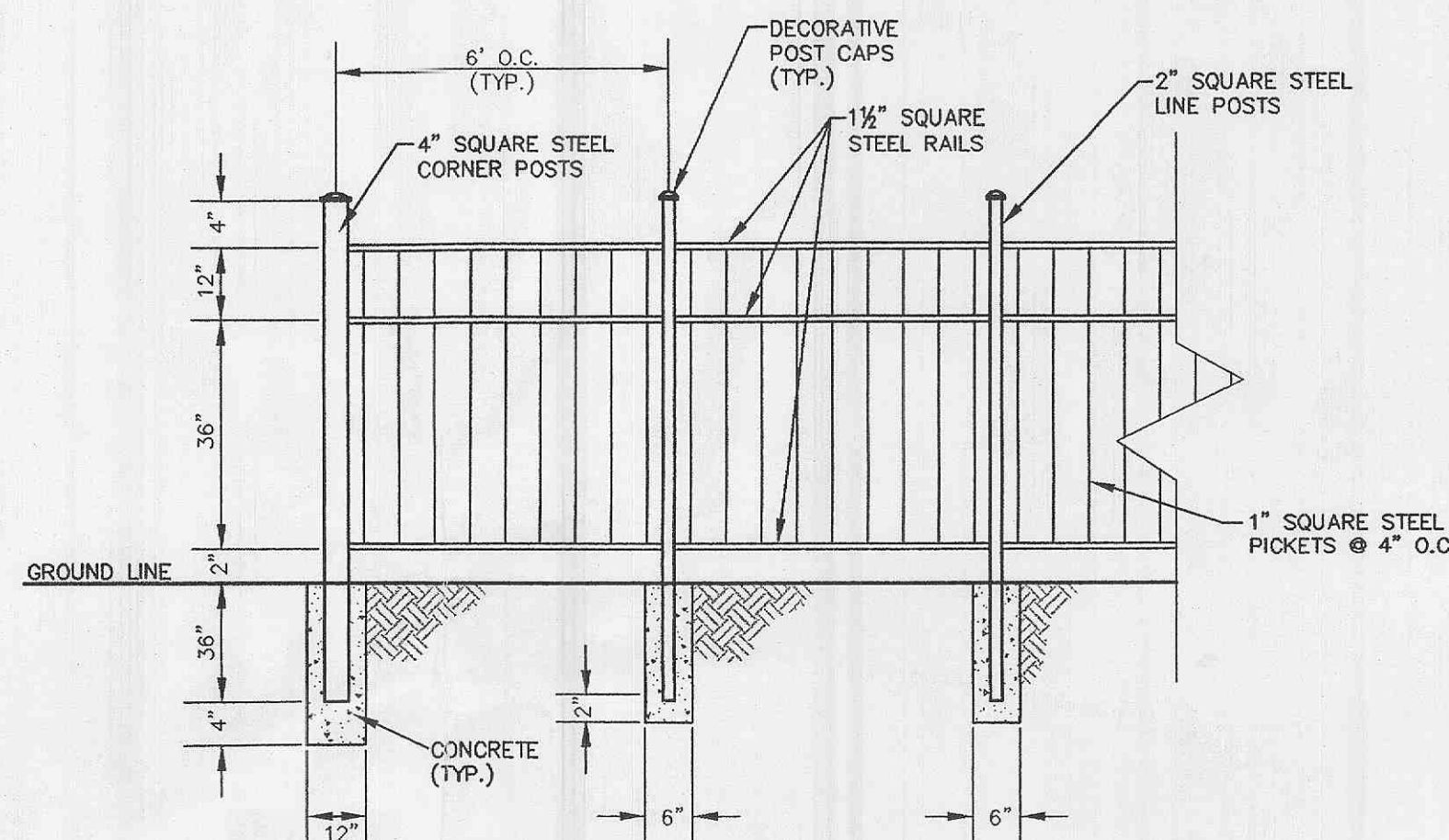
NOTE: POSITIVE (+) "G" - PROCEEDING AWAY FROM INTERSECTION AND UP A GRADE.  
NEGATIVE (-) "G" - PROCEEDING AWAY FROM INTERSECTION AND DOWN A GRADE.



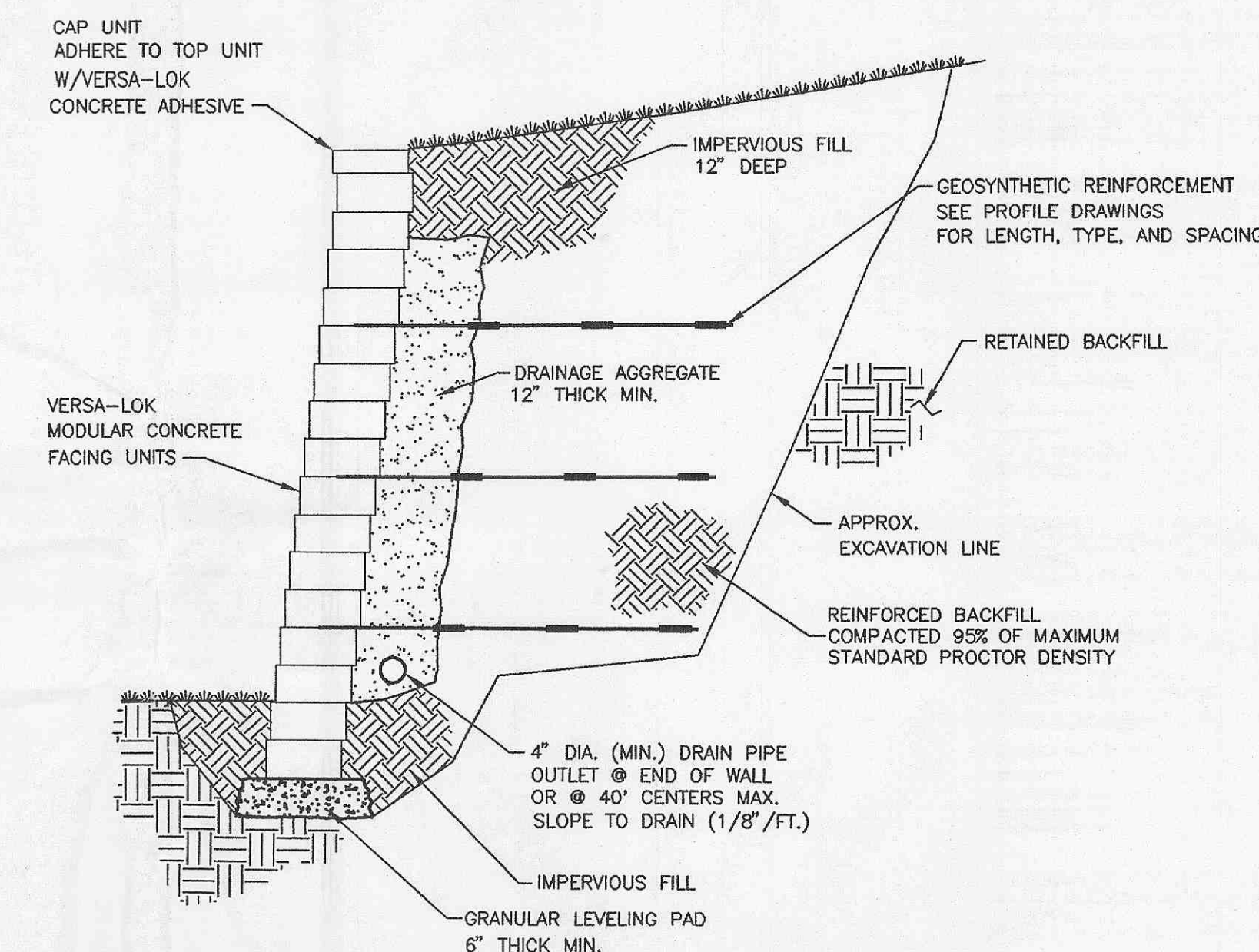
NOTE: SHADED PORTION OF CONCRETE SIDEWALK SHALL BE 7" THICK

**STRAIGHT CURB RAMP (TYPE 1)**

- DO NOT SCALE DRAWING. FOLLOW DIMENSIONS.
- SIDEWALKS AND SIDEWALK CURB RAMPS SHALL BE CONSTRUCTED IN ACCORDANCE WITH THESE DETAILS AND THE CURRENT APPROVED "AMERICANS WITH DISABILITIES ACT ACCESSIBILITY GUIDELINES" (ADAAG).
- PROVIDE A LANDING AT THE TOP OF EACH STRAIGHT RAMP WHEN THE GRADE ALONG CURB ("G") IS GREATER THAN +2% AND LESS THAN +7% FOR OTHER VALUES OF "G", INCLUDING ALL NEGATIVE (-) VALUES, NO LANDING IS REQUIRED.
- MINIMUM SIDEWALK WIDTH ALONG 6" VERTICAL CURB SHALL BE 5 FEET. MINIMUM SIDEWALK WIDTH ALONG 3" ROLLED CURB SHALL BE 4 FEET.
- MAXIMUM SIDEWALK CROSS SLOPE 0.02'/FT.
- ALL SIDEWALK SECTIONS SHALL BE 4" THICK, EXCEPT WHERE INDICATED OTHERWISE BY SHADED PORTIONS SHOWN ON DETAILS. ALL SIDEWALK SECTIONS AND CURB RAMPS, REGARDLESS OF THICKNESS, SHALL BE PAID FOR AS "CONCRETE SIDEWALK".
- WHERE CURB RAMP MEETS PAVEMENT, BULLNOSE WILL NOT BE PERMITTED.
- CONSTRUCT A DIAGONAL RAMP WHEN THE MAXIMUM CORNER RADIUS ALLOWED FOR A STRAIGHT RAMP IS EXCEEDED.
- IF INTEGRAL CONCRETE CURB IS CONSTRUCTED, STRIKE A DUMMY JOINT ACROSS BOTTOM OF RAMP AT CURB LINE. IF CONCRETE CURB IS DOWEL-ON, BLOCK OUT PAVEMENT TO PROVIDE FULL DEPTH CURB ACROSS RAMP FROM OUTER POINT OF CURB TAPER TO OUTER POINT OF CURB TAPER.
- FOR SIDEWALK LOCATIONS ON CUL-DE-SACS, REFER TO "PAVEMENT CONSTRUCTION DETAILS".
- FOR PAVEMENT LONGITUDINAL AND TRANSVERSE JOINTS AND DOWEL AND TIE BAR REQUIREMENTS AND DIMENSIONS, REFER TO THE PAVEMENT CONSTRUCTION DETAILS FOR "JOINTS AND CURBS", STANDARD DRAWING C502.03.
- FOR ROADWAY CROSS SLOPES, PAVEMENT TYPES, AND THICKNESSES, REFER TO "STANDARD TYPICAL SECTION".



**WROUGHT IRON FENCE DETAIL**



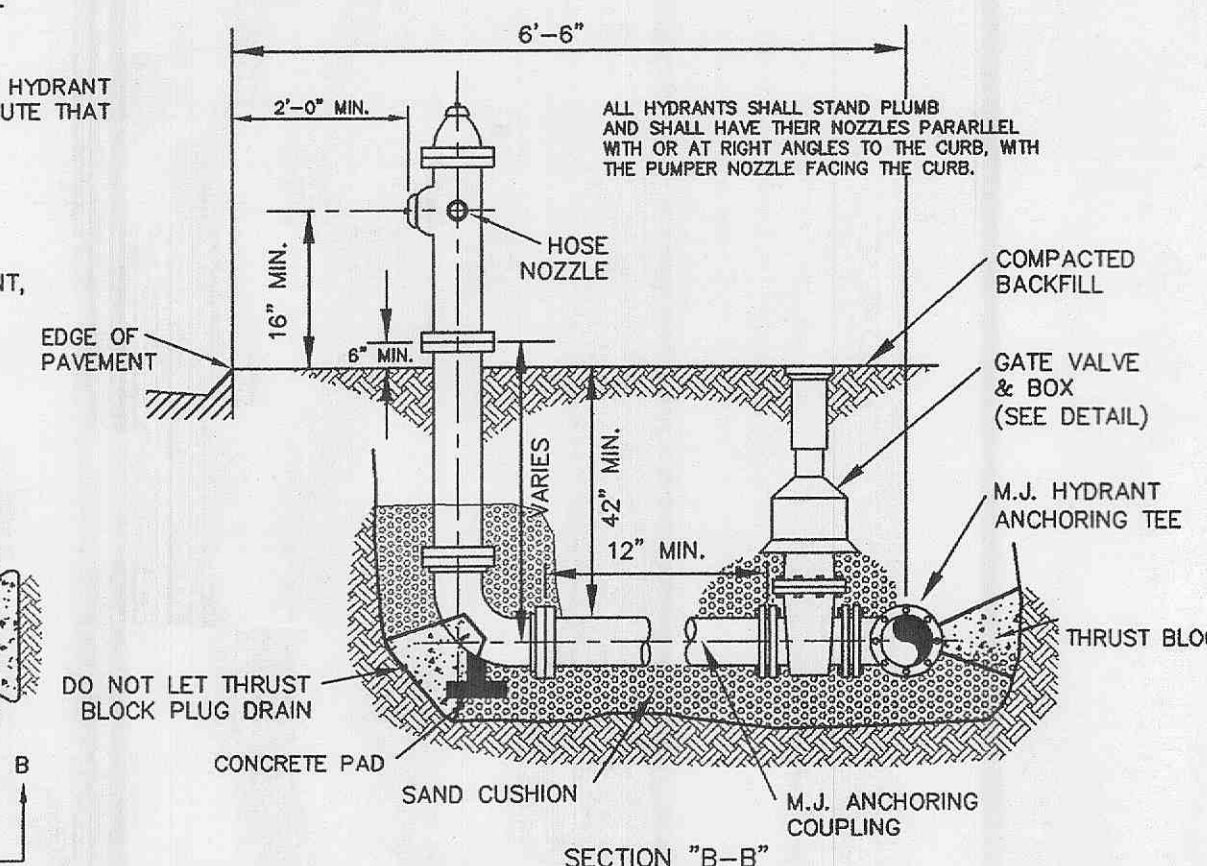
**TYPICAL SECTION-REINFORCED RETAINING WALL**

MODULAR CONCRETE UNIT  
SCALE: NONE

(NOTE: STRUCTURAL CALCULATIONS BY OTHERS)

FIRE HYDRANTS SHALL MEET THE FOLLOWING REQUIREMENTS:

- CENTERLINE OF THE 4 1/2 INCH HYDRANT OUTLET SHALL BE A MINIMUM OF 18 INCHES AND A MAXIMUM OF 36 INCHES ABOVE FINISH GRADE.
- THE TYPE AND DESIGN OF THE FIRE HYDRANT SHALL BE APPROVED, IF DIFFERENT THAN THE ALREADY APPROVED TYPE AND DESIGN THAT IS BEING USED BY THE LOCAL FIRE PROTECTION DISTRICT THE FIRE HYDRANT SHALL BE PROVIDED WITH TWO 2 1/2" HOSE NOZZLES AND ONE 4 1/2" PUMPER NOZZLE, ALL HAVING NATIONAL STANDARD HOSE THREADS. NOZZLES SHALL HAVE CAPS ATTACHED BY CHAINS. OPERATING NUTS SHALL BE AWWA STANDARD (PENTAGONAL, MEASURING 1 1/2" POINT TO FLAT). HYDRANT SHALL HAVE A 5 1/4" VALVE AND 6" BARREL.
- ALL PUBLIC FIRE HYDRANT BARRELS ARE TO BE PAINTED YELLOW. ALL FIRE HYDRANT BONNETS ARE TO BE PAINTED BASED ON THE GALLONS OF WATER PER MINUTE THAT THEY WILL FLOW. THESE COLORS ARE PER N.F.P.A.  
A.) RED = 500 OR LESS GALLONS  
B.) ORANGE = 501 TO 1000 GALLONS  
C.) GREEN = 1001 TO 1500 GALLONS  
D.) BLUE = 1501 GALLONS OR GREATER
- FIRE HYDRANTS SHALL BE SET BACK FROM THE CURB OF THE PAVEMENT, THE SET BACK SHALL NOT EXCEED 12 FEET.
- FIRE HYDRANTS SHALL NOT BE OBSTRUCTED BY PLANTINGS, BUSHES TREES, SIGNS, LIGHT STANDARDS, FENCING, ETC. WITHIN 6 FEET OF ANY HYDRANT IN ALL DIRECTIONS.

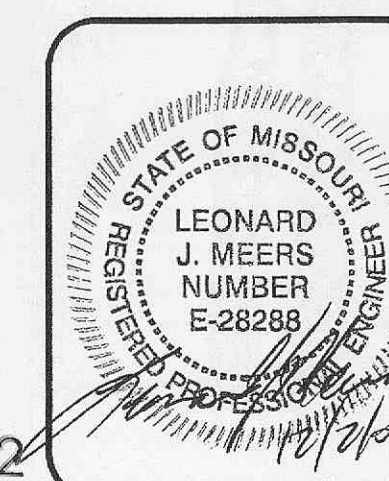


**FIRE HYDRANT DETAILS**

J. R. GRIMES CONSULTING ENGINEERS, INC. AND THE UNDERSIGNED ENGINEER HAVE NO RESPONSIBILITY FOR SERVICES PROVIDED BY OTHERS TO IMPLEMENT THE IMPROVEMENTS SHOWN ON THIS PLAN AND ALL OTHER DRAWINGS WHERE THE UNDERSIGNED ENGINEER'S SEAL APPEARS. THE CONSTRUCTION MEANS AND METHODS ARE THE SOLE RESPONSIBILITY OF THE OWNER AND CONTRACTOR. J. R. GRIMES CONSULTING ENGINEERS, INC. HAS NO RESPONSIBILITY TO VERIFY FINAL IMPROVEMENTS AS SHOWN ON THIS PLAN UNLESS SPECIFICALLY ENGAGED AND AUTHORIZED TO DO SO BY THE OWNER OR CONTRACTOR.

PREPARED FOR:  
PERSIMMON POINTE  
MARKET, L.L.C.  
165 N. MERAMEC AVE., STE. 500  
ST. LOUIS, MO 63105  
PH: (314) 721-3444  
FAX: (314) 721-3071

P&Z FILE # 3101.02



<b>PERSIMMON POINTE MARKET</b>	
<b>DETAILS</b>	
<b>J. R. GRIMES</b>	
<b>CONSULTING ENGINEERS, INC.</b>	
12300 OLD TESSON ROAD SUITE 300-D ST. LOUIS, MO. 63128 PH: (314) 849-8100 FAX (314) 849-8010 E-MAIL jrgeng@mlink.com	
DRAWN BY: KAN	DATE: 09/12/03
CHECKED BY: LJM	DATE: 09/12/03
JOB NUMBER: 6751	SHEET: C6