

REVISIONS	BY

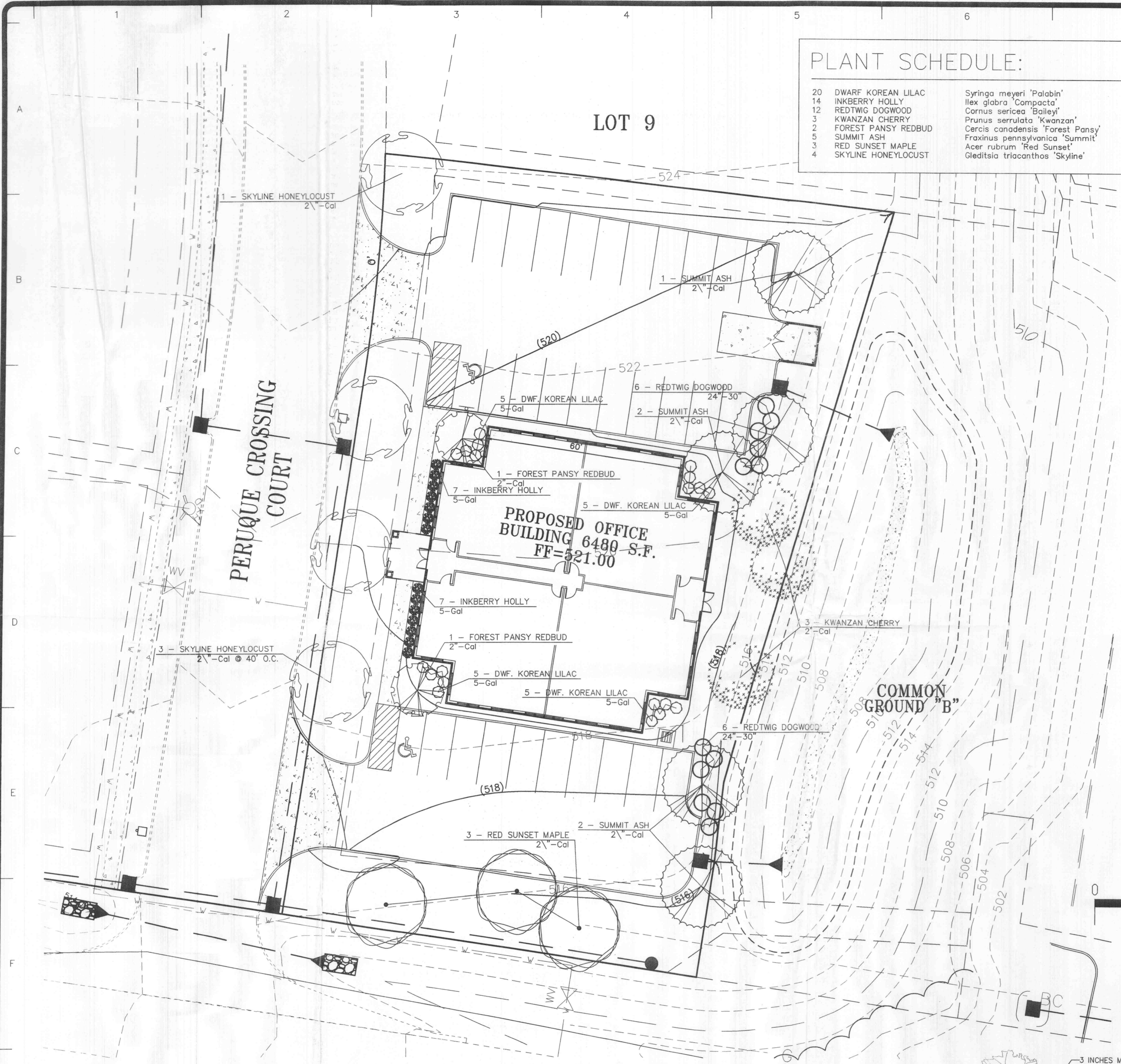
landscape TECHNOLOGIES
 (630) 928-1200
 67 Jacobs Creek Drive
 St. Charles, Missouri 63304
 Fax: (630) 928-4563

PLANTING PLAN FOR THE PROPOSED
General Office Building
 LOT 10 - PEREQUE CROSSING O'FALLON, MO

DRAWN: RMM
 CHECKED: RMM / GJB
 DATE: MARCH 24, 2004
 SCALE: 1/16" = 1'-0"
 JOB No.:
 SHEET
L-1
 OF ONE SHEET

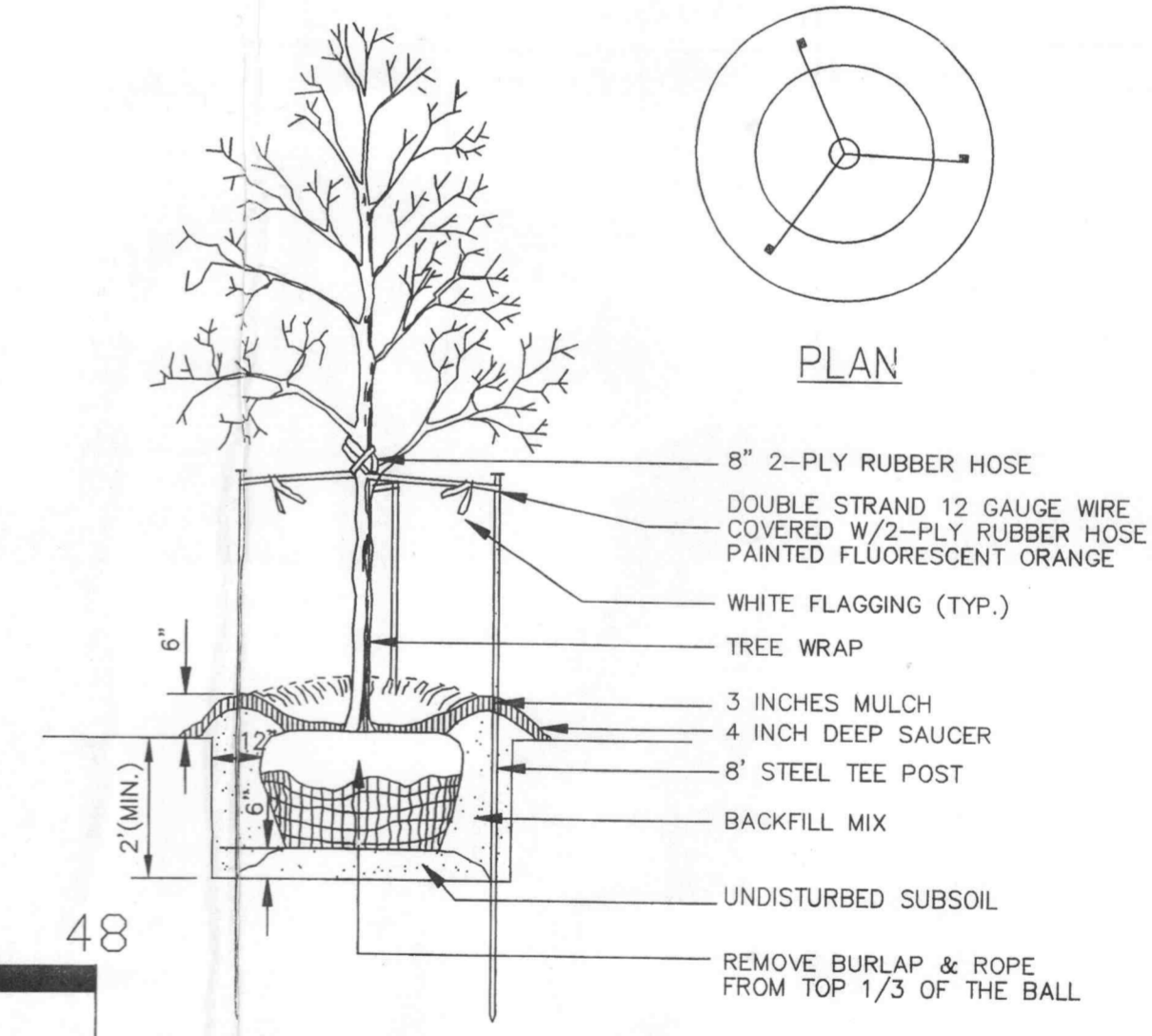
PLANT SCHEDULE:			
20	DWARF KOREAN LILAC	Syringa meyeri 'Paladin'	5 Gallon
14	INKBERRY HOLLY	Ilex glabra 'Compacta'	5 Gallon
12	REDTWIG DOGWOOD	Cornus sericea 'Bailey'	24"-30" B&B
3	KWANZAN CHERRY	Prunus serrulata 'Kwanzan'	2" Caliper
2	FOREST PANSY REDBUD	Cercis canadensis 'Forest Pansy'	2" Caliper
5	SUMMIT ASH	Fraxinus pennsylvanica 'Summit'	2" Caliper
3	RED SUNSET MAPLE	Acer rubrum 'Red Sunset'	2" Caliper
4	SKYLINE HONEYLOCUST	Gleditsia triacanthos 'Skyline'	2" Caliper

- NOTES:**
- All natural vegetation shall be maintained where it does not interfere with construction or the permanent plan of operation. Every effort possible shall be made to protect existing structures or vegetation from damage due to equipment usage. Contractor shall at all times protect all materials and work against injury to public.
 - The landscape contractor shall be responsible for any coordination with other site related work being performed by other contractors. Refer to architectural drawings for further coordination of work to be done.
 - Underground facilities, structures and utilities must be considered approximate only. There may be others not presently known or shown. It shall be the landscape contractor's responsibility to determine or verify the existence of and exact location of the above (Call 1-800-DIG-RITE).
 - Plant material are to be planted in the same relationship to grade as was grown in nursery conditions.
 - All mulch to be shredded oak bark mulch at 3" depth (after compaction) unless otherwise noted. Mulch shall be clean and free of all foreign materials. Edge all beds with spade-cut edge unless otherwise noted.
 - It shall be the landscape contractor's responsibility to:
 - Verify all existing and proposed features shown on the drawings prior to commencement of work.
 - Report all discrepancies found with regard to existing conditions or proposed design to the landscape architect immediately for a decision.
 - Stake the locations of all proposed plant material and obtain the approval of the owner's representative or landscape architect prior to installation.
 - All planting beds shall be cultivated to 6" depth minimum and graded smooth immediately before planting of plants. All shrub masses to be included & mulched into one contiguous bed unless otherwise noted.
 - Topsoil mix for all proposed landscape plantings shall be five (5) parts well-drained screened organic topsoil to one (1) part Canadian sphagnum peat moss as per planting details. Landscape contractor to apply pre-emergent herbicide to all planting beds.
 - All plant material (excluding ground cover, perennials and annuals) are to be warranted for a period of 12 months after installation at 100% of the installed price.
 - All disturbed lawn areas to be seeded with a mixture of Turf-Type fescue (300# per acre) and bluegrass (10# per acre). Landscape contractor shall offer an alternate price for sod in lieu of seed. Lawn areas shall be unconditionally warranted for a period of 90 days from date of final acceptance. Bare areas more than one square foot per any 50 square feet shall be replaced.
 - Items shown on this drawing take precedence over the material list. It shall be the landscape contractor's responsibility to verify all quantities and conditions prior to implementation of this plan. No substitutions of types or size of plant materials will be accepted without written approval from landscape architect.
 - Any points carrying concentrated water loads and all slopes of 15% or greater shall be sodded.
 - Siltation controls may be required to prevent run-off. Straw bales placed end-to-end shall be used, anchored with no less than two 3/8" X 36" reinforcing rods. Bales shall remain until all graded areas are seeded or sodded.
 - The landscape contractor is to receive the site graded to within 1/10 of a foot. Landscape contractor to obtain letter of grade certification from the general contractor prior commencement of work.

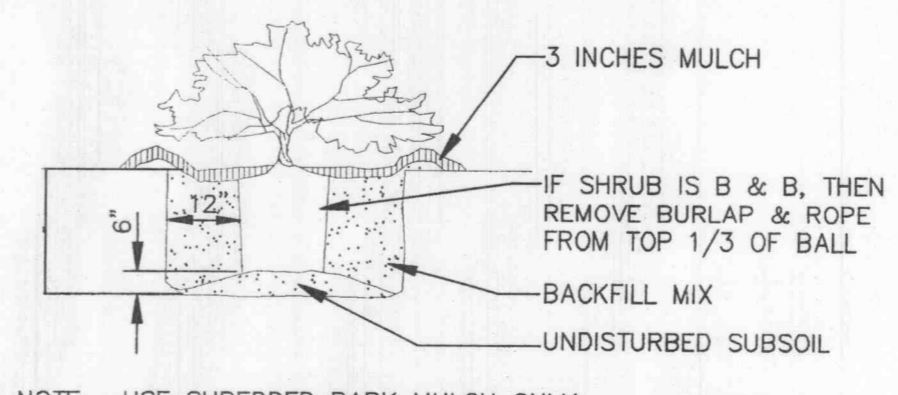


LANDSCAPE REQUIREMENTS:

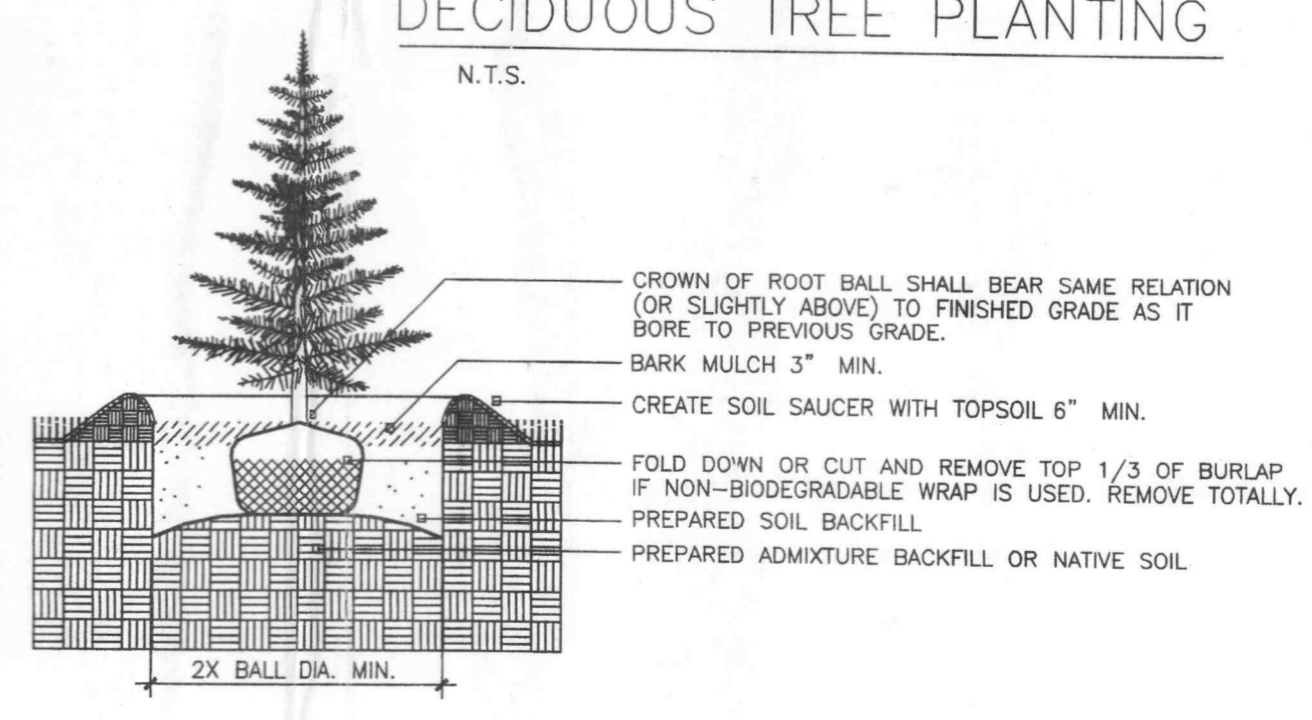
- STREET TREES:**
 REQUIRED: ONE TREE PER 40 LIN. FT. OF STREET FRONTAGE.
 286 LIN. FT. OF STREET FRONTAGE = 7 STREET TREES REQUIRED.
 STREET TREES PROVIDED: 7 TREES
- ADDITIONAL TREES:**
 REQUIRED: ONE TREE PER 3,000 SQ. FT. OF OPEN SPACE.
 12,908 SQ. FT. OF OPEN SPACE PROVIDED = 4 ADDITIONAL TREES REQUIRED.
 ADDITIONAL TREES PROVIDED: 5 ADDITIONAL TREES
- PARKING LOT ISLANDS:**
 REQUIRED: ONE ISLAND PER 20 PARKING SPACES (ALLOWING FOR TWO (3") TREES + ONE (5 GALLON) SHRUB PER FULL ISLAND)
 TOTAL PARKING SPACES: 31
 TOTAL PARKING LOT ISLANDS REQUIRED: 2
 TREES PROVIDED @ PARKING LOT: 5
 SHRUBS PROVIDED @ PARKING LOT: 12
- BUFFERYARDS:**
 NO BUFFERYARD REQUIRED



NOTE: USE SHREDDED BARK MULCH ONLY
DECIDUOUS TREE PLANTING
 N.T.S.



NOTE: USE SHREDDED BARK MULCH ONLY
SHRUB PLANTING
 N.T.S.



NOTE: USE SHREDDED BARK MULCH ONLY
EVERGREEN TREE PLANTING
 N.T.S.