

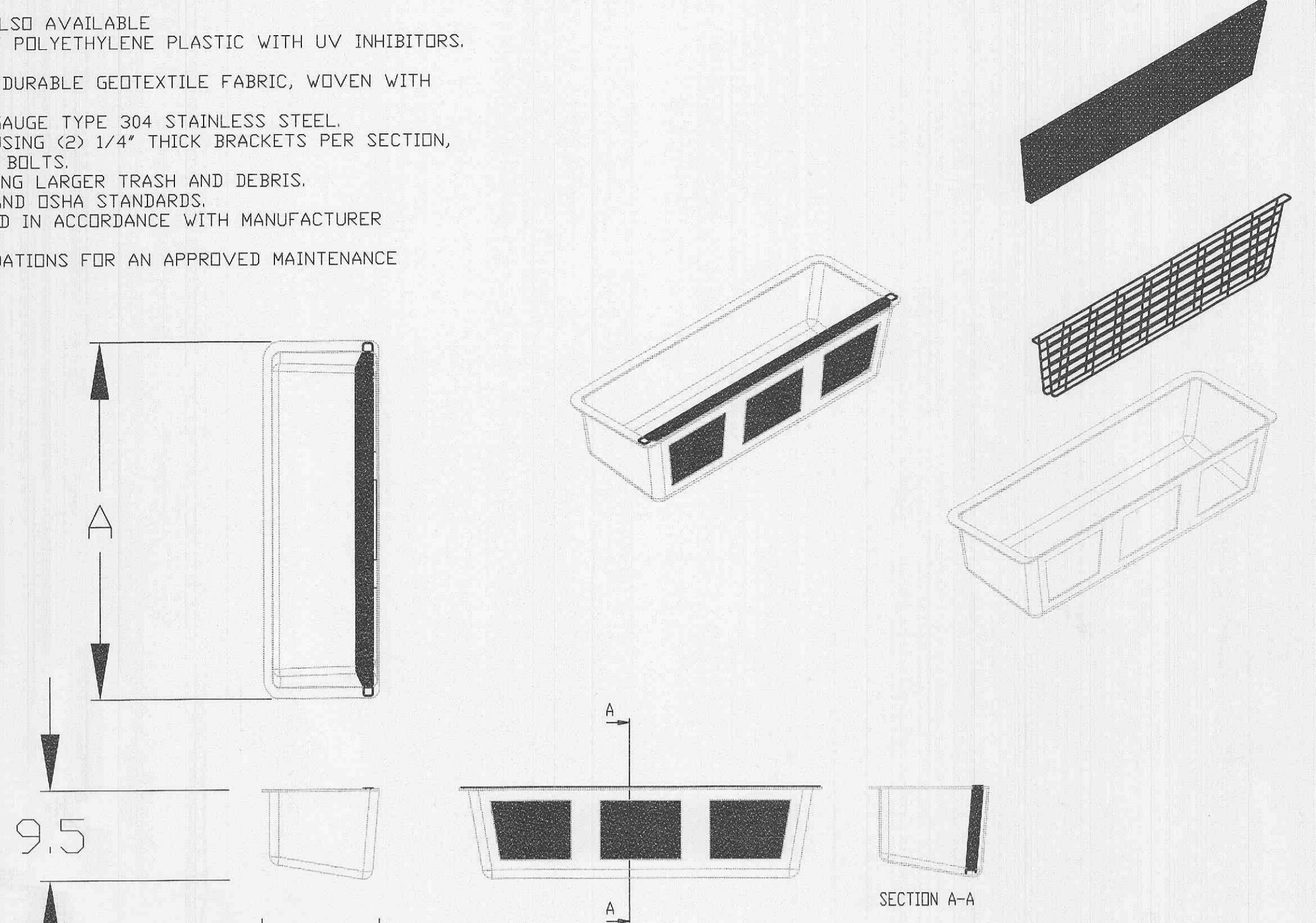
REVISIONS:  
 10-25-07 CITY COMMENTS  
 11-15-07 CITY COMMENTS  
 05-01-08 MOVE ENTRANCE  
 05-29-08 CITY COMMENTS

**NOTES**

1. ALL DIMENSIONS ARE IN FEET. CUSTOM SIZES ALSO AVAILABLE.
2. UNITS ARE CONSTRUCTED FROM HIGH DENSITY POLYETHYLENE PLASTIC WITH UV INHIBITORS. OVER 40% RECYCLED CONTENT.
3. DISPOSABLE MEDIA-PAK IS CONSTRUCTED OF DURABLE GEOTEXTILE FABRIC, WOVEN WITH PERFORATED POLYPROPYLENE.
4. MEDIA-PAK CAGE IS CONSTRUCTED USING 8 GAUGE TYPE 304 STAINLESS STEEL.
5. FILTER BODY IS SECURED TO INSIDE WALL USING (2) 1/4" THICK BRACKETS PER SECTION, ATTACHED USING 3/8" X 3" EXPANSION ANCHOR BOLTS.
6. OPTIONAL STORMWEB, DESIGNED FOR CAPTURING LARGER TRASH AND DEBRIS.
7. FILTER MEDIA IS NON-HAZARDOUS PER EPA AND OSHA STANDARDS.
8. FILTER SHALL BE INSTALLED AND MAINTAINED IN ACCORDANCE WITH MANUFACTURER RECOMMENDATIONS.
9. PLEASE REFER TO MANUFACTURER RECOMMENDATIONS FOR AN APPROVED MAINTENANCE PROGRAM.

**STANDARD DIMENSIONS**

MODEL #	A*
TRC2	2.00
TRC2.5	2.50
TRC3	3.00
TRC3.5	3.50
TRC4	4.00
TRC5	5.00
TRC6	6.00
TRC7	7.00
TRC8	8.00
TRC9	9.00
TRC10	10.00
TRC12	12.00
TRC14	14.00
TRC21	21.00
TRC28	28.00



TYPICAL DETAIL WITH SIZING TABLE  
 CURBINLET  
 TRITON

REVISIONS	
REV	DESCRIPTION

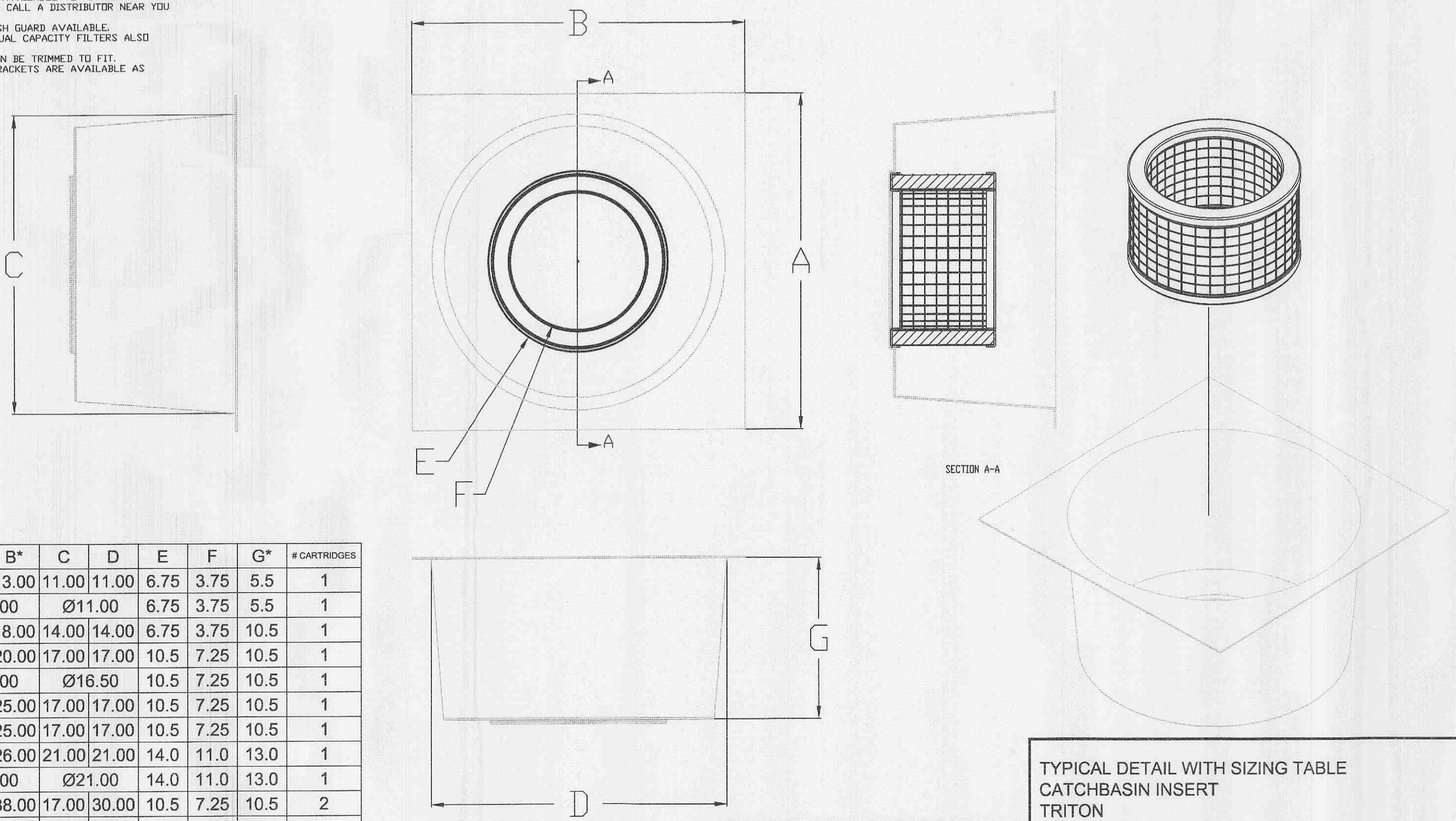


SCALE: NONE  
 DRAWN: JBS  
 CHECKED: WSG  
 FILE NAME: TYPTRITON  
 DATE: 4/10/07

SEE WWW.CONTECHSTORMWATER.COM FOR SPECIFICATIONS AND INSTALLATION NOTES.

**NOTES**

1. ALL DIMENSIONS ARE IN INCHES.
2. UNITS ARE CONSTRUCTED FROM HIGH DENSITY POLYETHYLENE PLASTIC WITH UV INHIBITORS.
3. MEDIA CARTRIDGES CAN BE INTERCHANGED WITH GEOTRAP SERIES AS SITE CONDITIONS CHANGE.
4. LOW PROFILE FILTERS ARE ALSO AVAILABLE FOR SHALLOW CATCH BASINS.
5. CUSTOM SIZES ARE AVAILABLE TO FIT MOST APPLICATIONS. PLEASE CALL A DISTRIBUTOR NEAR YOU FOR DETAILS.
6. OPTIONAL TIG TRASH GUARD AVAILABLE.
7. DUAL STAGE AND DUAL CAPACITY FILTERS ALSO AVAILABLE.
8. DIM "A" AND "B" CAN BE TRIMMED TO FIT.
9. CUSTOM INSTALL BRACKETS ARE AVAILABLE AS NEEDED.



TYPICAL DETAIL WITH SIZING TABLE  
 CATCHBASIN INSERT  
 TRITON

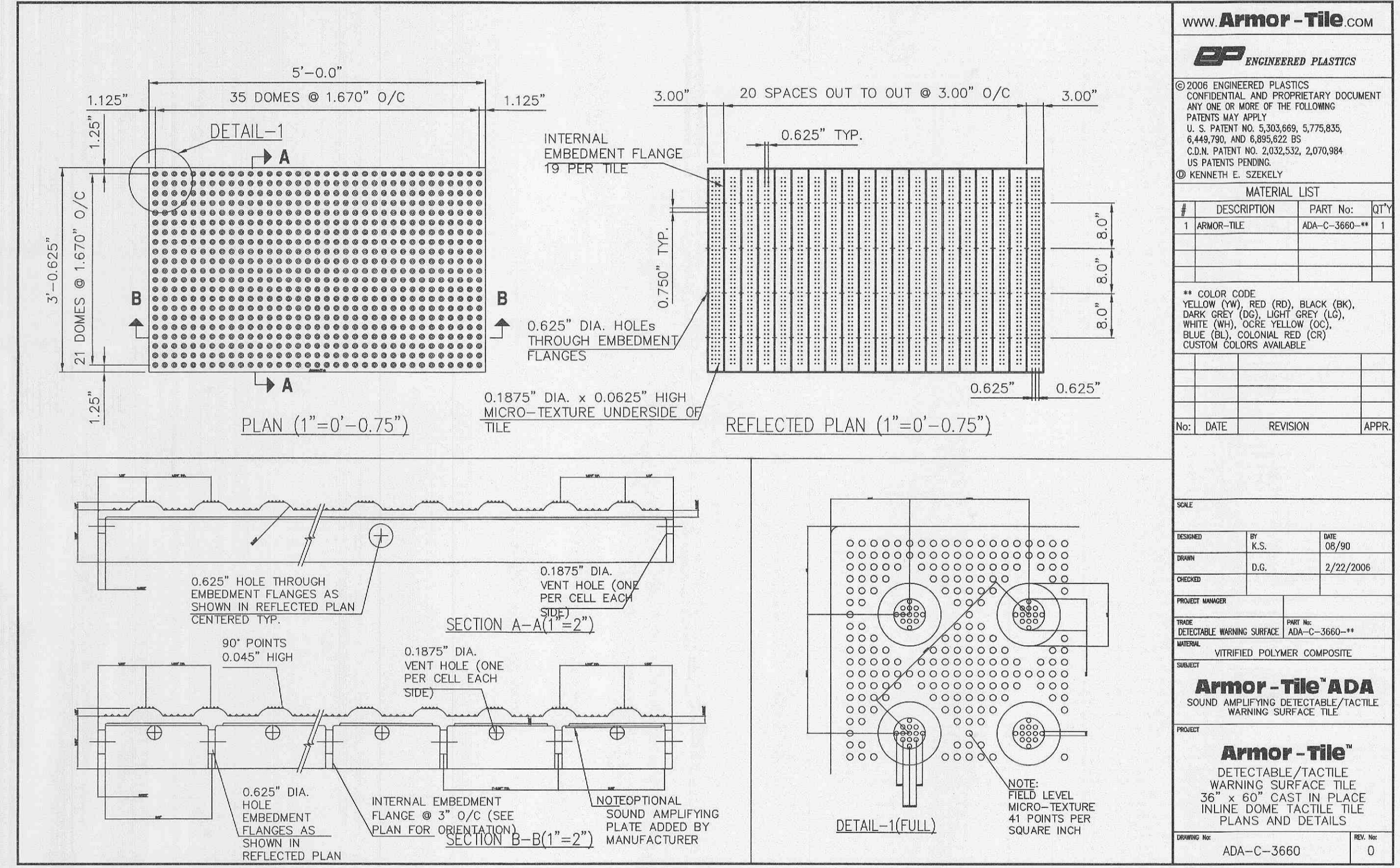
REVISIONS	
REV	DESCRIPTION



SCALE: NONE  
 DRAWN: JBS  
 CHECKED: WSG  
 FILE NAME: TYPTRITON  
 DATE: 4/10/07

SEE WWW.CONTECHSTORMWATER.COM FOR SPECIFICATIONS AND INSTALLATION NOTES.

MODEL #	A*	B*	C	D	E	F	G*	# CARTRIDGES
TR1212	13.00	13.00	11.00	11.00	6.75	3.75	5.5	1
TR1212RD	Ø13.00	Ø11.00	6.75	3.75	5.5	1		
TR1616	18.00	18.00	14.00	14.00	6.75	3.75	10.5	1
TR1818	20.00	20.00	17.00	17.00	10.5	7.25	10.5	1
TR1818RD	Ø20.00	Ø16.50	10.5	7.25	10.5	1		
TR1824	19.00	25.00	17.00	17.00	10.5	7.25	10.5	1
TR2024	21.00	25.00	17.00	17.00	10.5	7.25	10.5	1
TR2424SR	26.00	26.00	21.00	21.00	14.0	11.0	13.0	1
TR24RD	Ø26.00	Ø21.00	14.0	11.0	13.0	1		
TR2436	26.00	38.00	17.00	30.00	10.5	7.25	10.5	2
TR3030	33.00	33.00	21.00	21.00	14.0	11.0	13.0	1
TR3636	40.00	40.00	34.00	34.00	10.5	7.25	10.5	4
TR36RD	Ø40.00	Ø30.00	14.0	11.0	22.0	1-TALL		
TR2448	26.00	52.00	21.00	42.00	14.0	11.0	13.0	2
TR4848	52.00	52.00	42.00	42.00	24.0	20.0	22.0	1-TALL



WWW.ARMOR-TILE.COM  
**ARMOR-TILE**  
 ENGINEERED PLASTICS  
 © 2008 ENGINEERED PLASTICS  
 CONFIDENTIAL AND PROPRIETARY DOCUMENT  
 ANY ONE OR MORE OF THE FOLLOWING  
 PATENTS MAY APPLY  
 U.S. PATENT NO. 5,333,669; 5,775,635;  
 6,448,790; AND 6,895,622 ES  
 C.D.A. PATENT NO. 2,032,532; 2,070,984  
 US PATENT PENDING  
 © KENNETH E. SZEKELY

MATERIAL LIST		
#	DESCRIPTION	PART NO.
1	ARMOR-TILE	ADA-C-3660-1*

\*\* COLOR CODE  
 YELLOW (YW), RED (RD), BLACK (BK),  
 DARK GREY (DG), LIGHT GREY (LG),  
 WHITE (WH), OCIE YELLOW (OC),  
 BLUE (BL), COLONIAL RED (CR)  
 CUSTOM COLORS AVAILABLE

NO.	DATE	REVISION	APPR.

SCALE:  
 DRAWN BY: K.S. DATE: 08/09  
 DRAWN BY: D.G. DATE: 2/22/2006  
 CHECKED BY: [Signature]  
 PROJECT MANAGER: [Signature]  
 TITLE: DETECTABLE WARNING SURFACE ADA-C-3660-1\*  
 MATERIAL: VITRIFIED POLYMER COMPOSITE  
**Armor-Tile ADA**  
 SOUND AMPLIFYING DETECTABLE/FACTILE WARNING SURFACE TILE  
 PROJECT: [Signature]  
**Armor-Tile**  
 DETECTABLE/FACTILE WARNING SURFACE TILE  
 36" x 60" CAST IN PLACE INLINE DOME FACTILE TILE PLANS AND DETAILS  
 DRAWING NO: ADA-C-3660 REV. NO: 0

SEE WWW.ARMOR-TILE.COM FOR SPECIFICATIONS AND INSTALLATION NOTES.