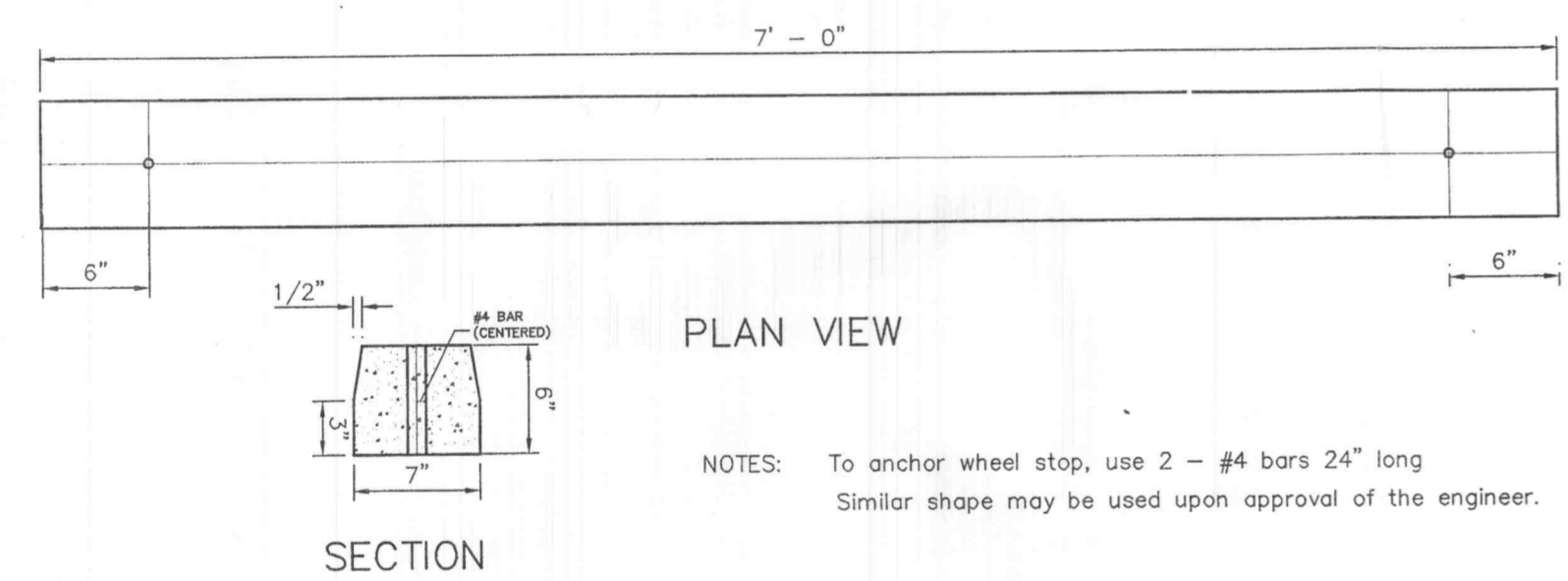


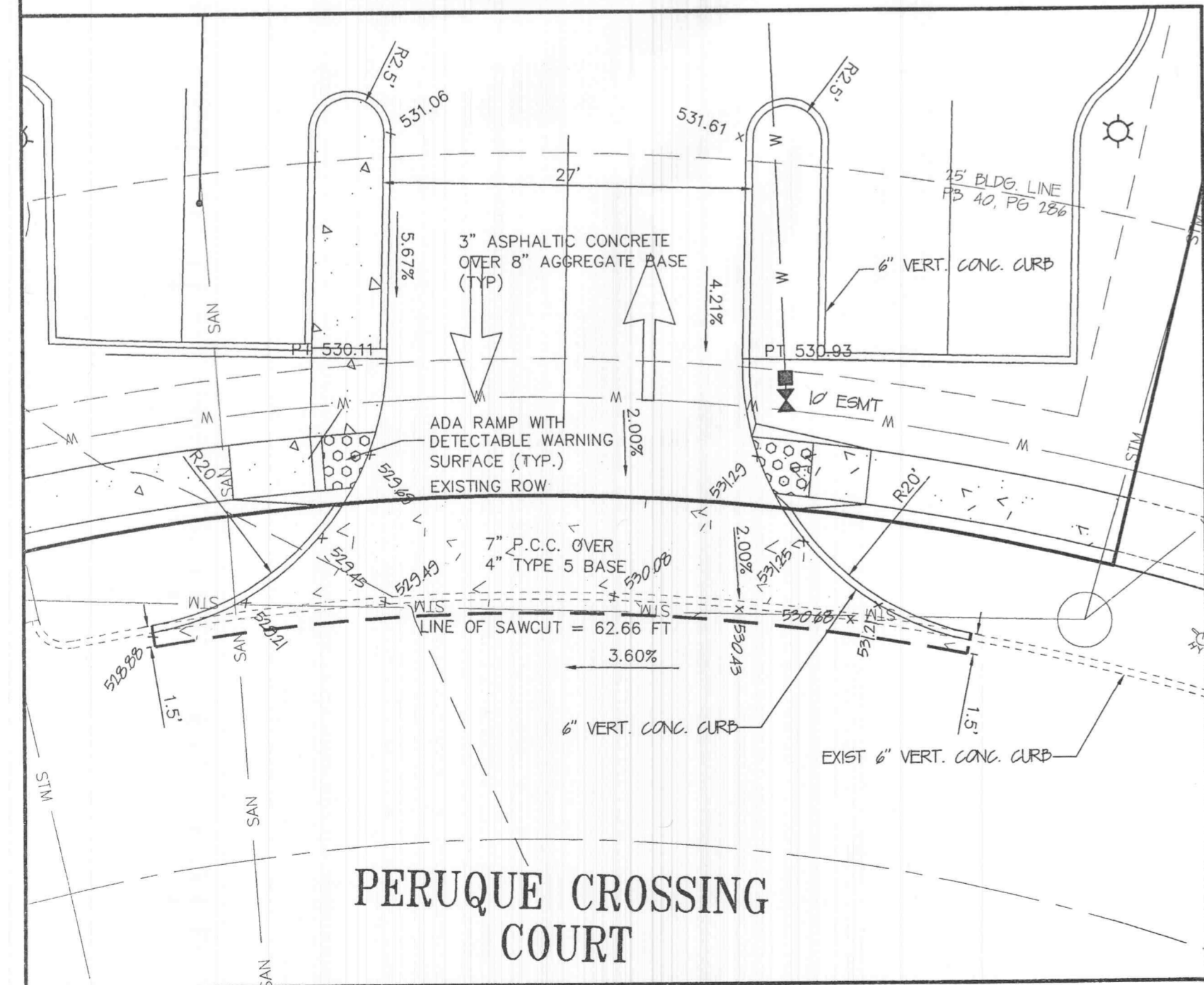
CONSTRUCTION SPECIFICATIONS

1. Stone Size - Use 2" stone, or reclaimed or recycled concrete equivalent.
2. Length - As required, but not less than 50 feet (except on a single residence lot where a 30 foot minimum length would apply).
3. Thickness - Not less than six (6) inches.
4. Width - Twenty (20) foot minimum, but not less than the full width at points where ingress or egress occurs.
5. Filter Cloth - Will be placed over the entire area prior to placing of stone. Filter will not be required on a single family residence lot.
6. Surface Water - All surface water flowing or diverted toward construction entrances shall be piped across the entrance. If piping is impractical, a mountable berm with 5:1 slopes will be permitted.
7. Maintenance - The entrance shall be maintained in a condition which will prevent tracking or flowing of sediment onto public rights-of-way. This may require periodic top dressing with additional stone as conditions demand and repair and/or cleanout of any measures used to trap sediment. All sediment spilled, dropped, washed or tracked onto public rights-of-way must be removed immediately.
8. Washing - Wheels shall be cleaned to remove sediment prior to entrance onto public rights-of-way. When washing is required, it shall be done on an area stabilized with stone and which drains into an approved sediment trapping device.
9. Periodic inspection and needed maintenance shall be provided after each rain.

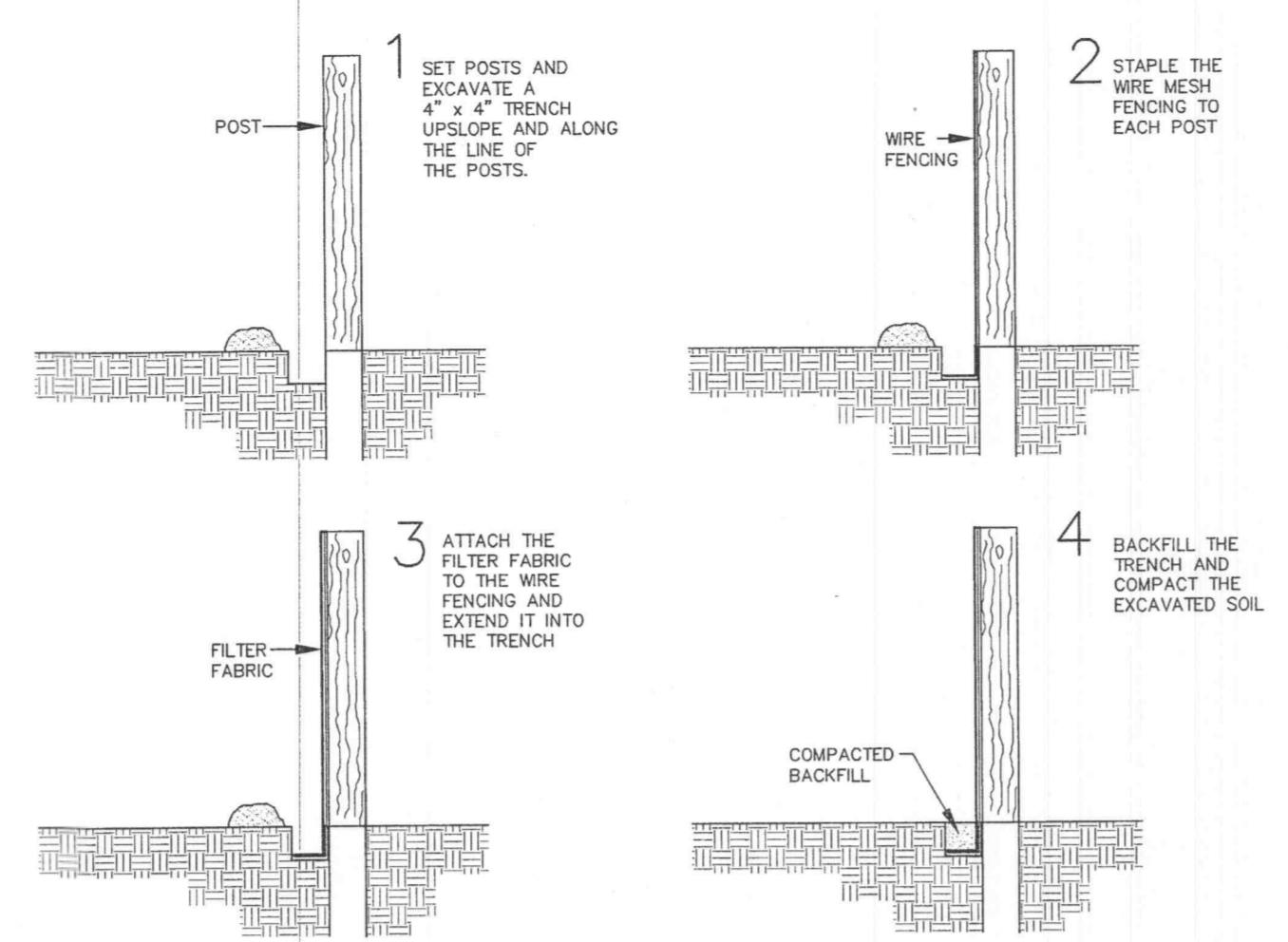
**STABILIZED CONSTRUCTION ENTRANCE/WASHDOWN AREA**  
 NOT TO SCALE



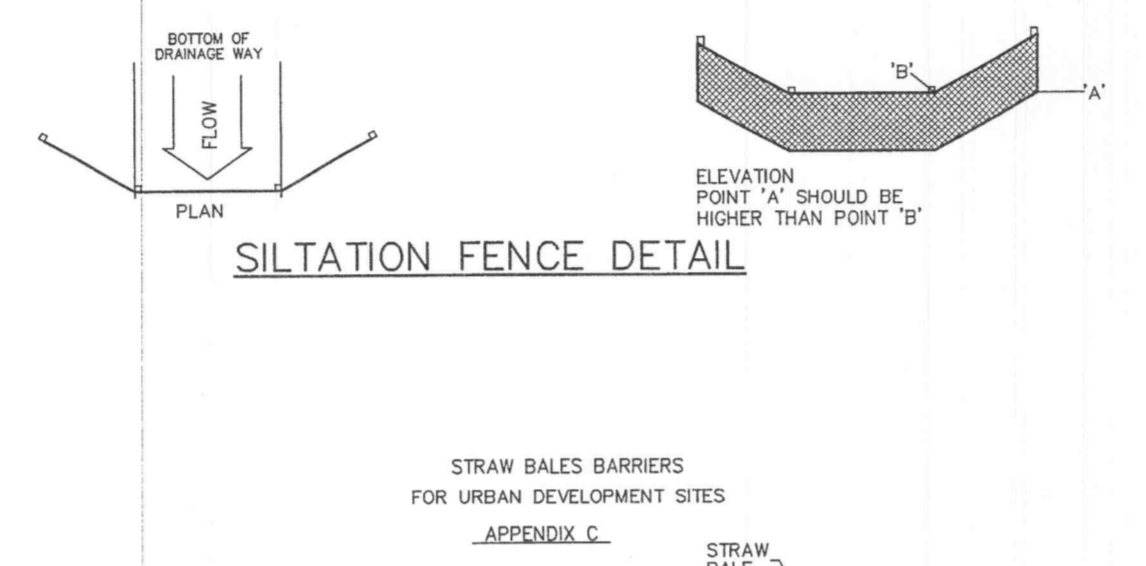
**PRECAST CONCRETE WHEELSTOP**



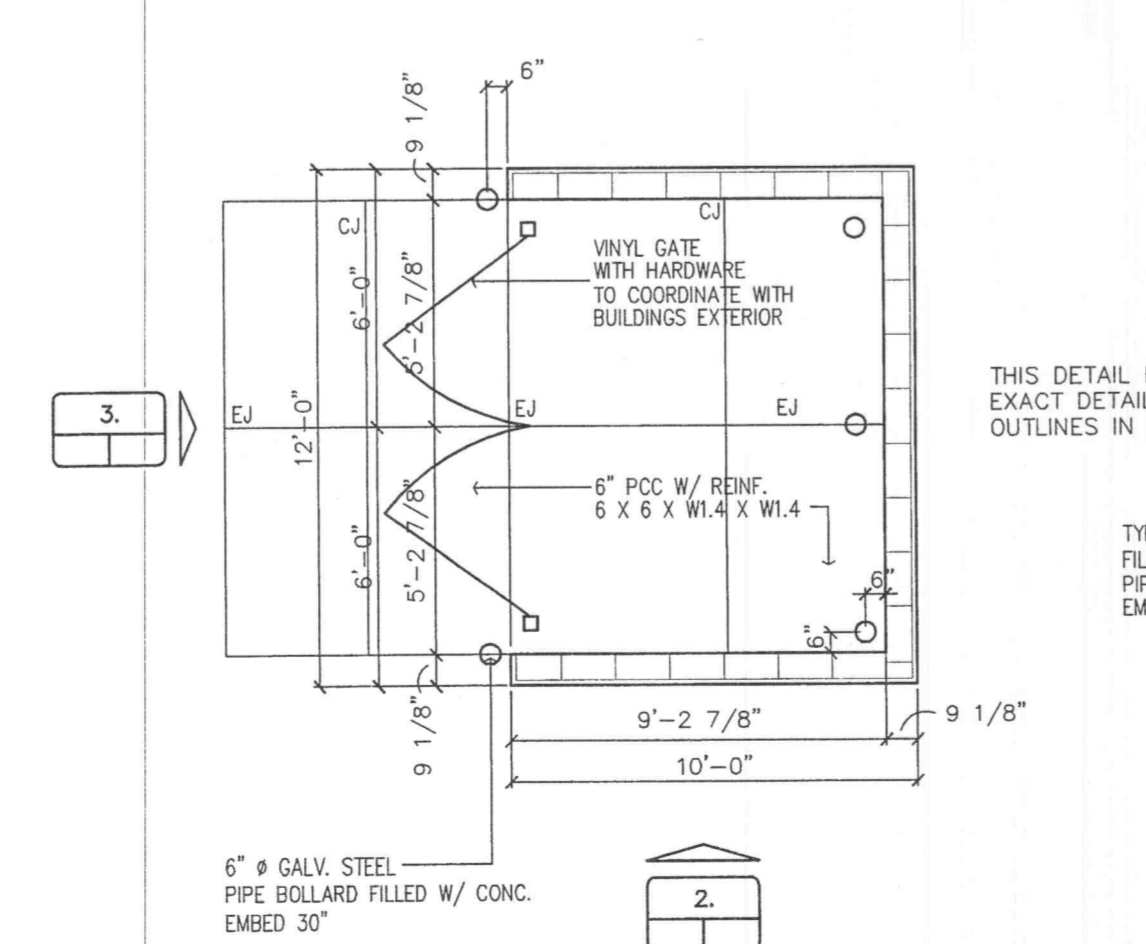
**PERUQUE CROSSING COURT  
 ENTRANCE DETAIL**  
 SCALE: 1:10



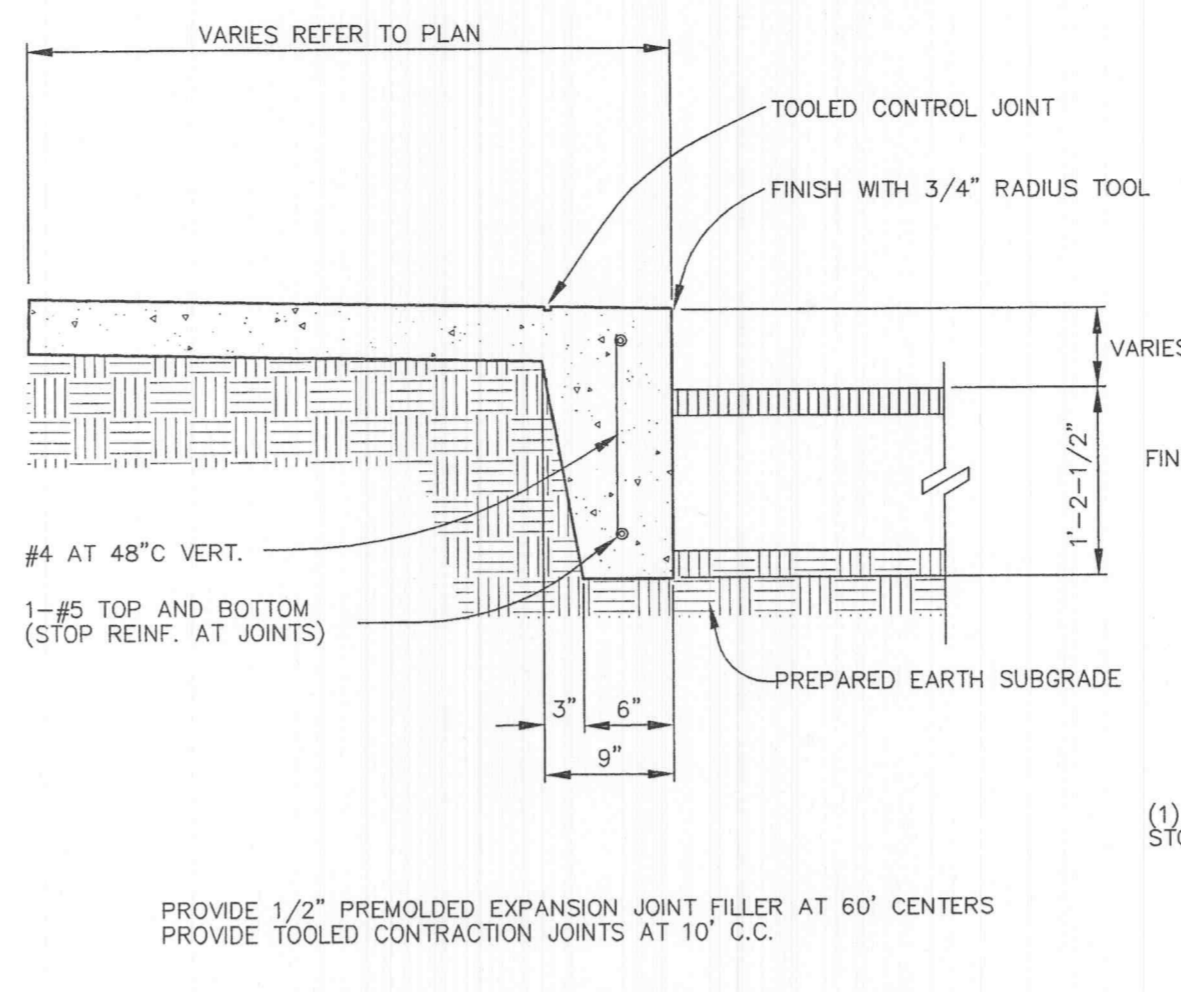
**SILTATION FENCE DETAIL**  
 NOT TO SCALE



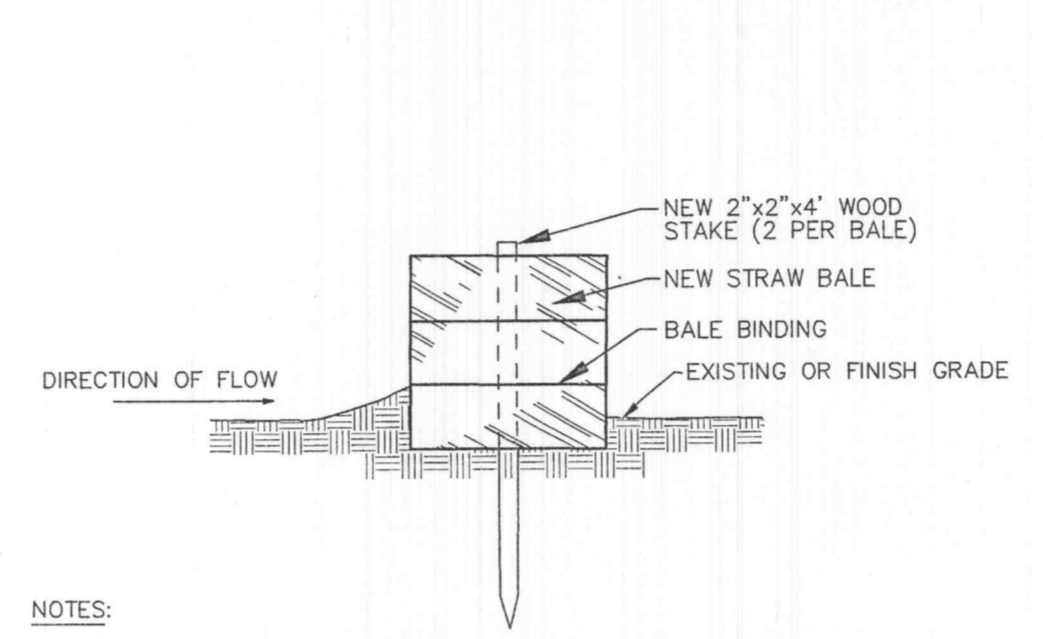
**PLACEMENT AND CONSTRUCTION OF STRAW BALE BARRIER**



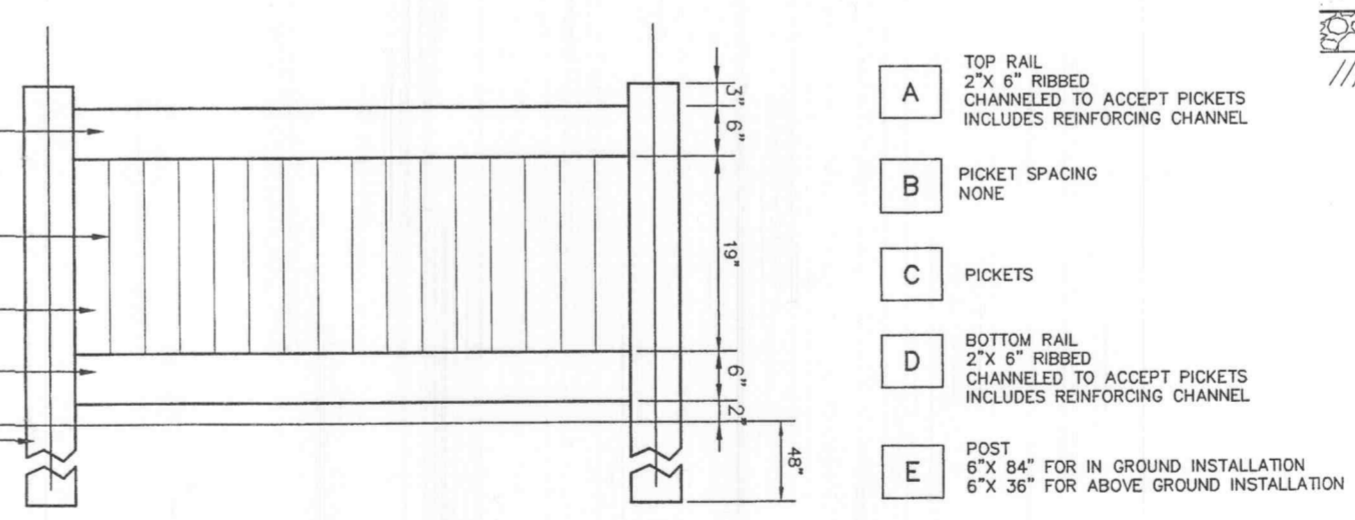
**1. TRASH ENCLOSURE PLAN**  
 NOT TO SCALE



**TURNED DOWN CONCRETE WALK**  
 NOT TO SCALE

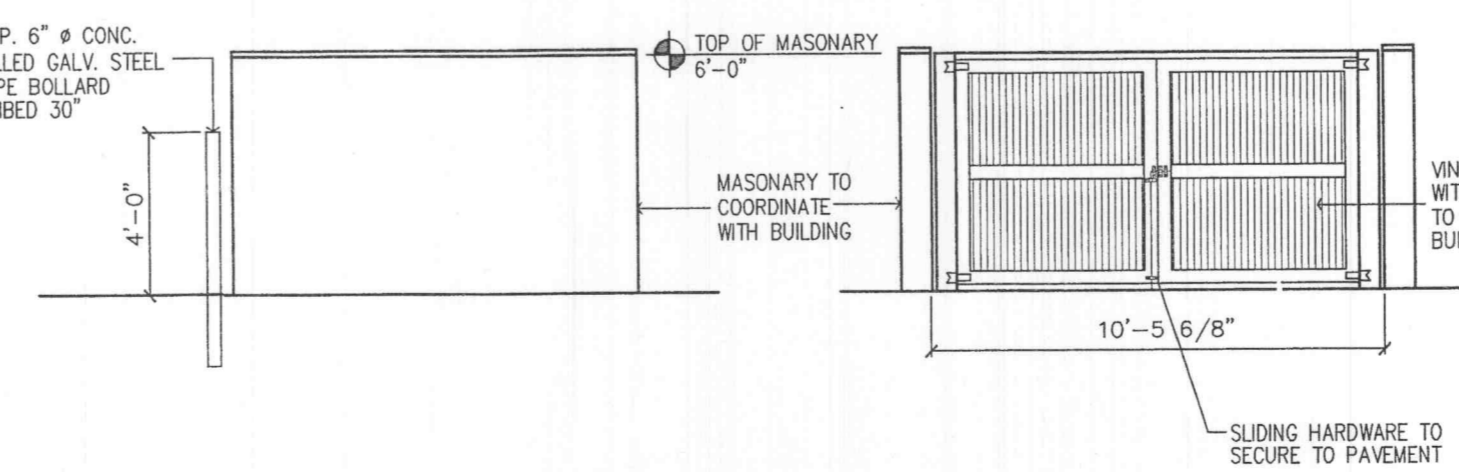


**SEDIMENT BARRIER**  
 NOT TO SCALE

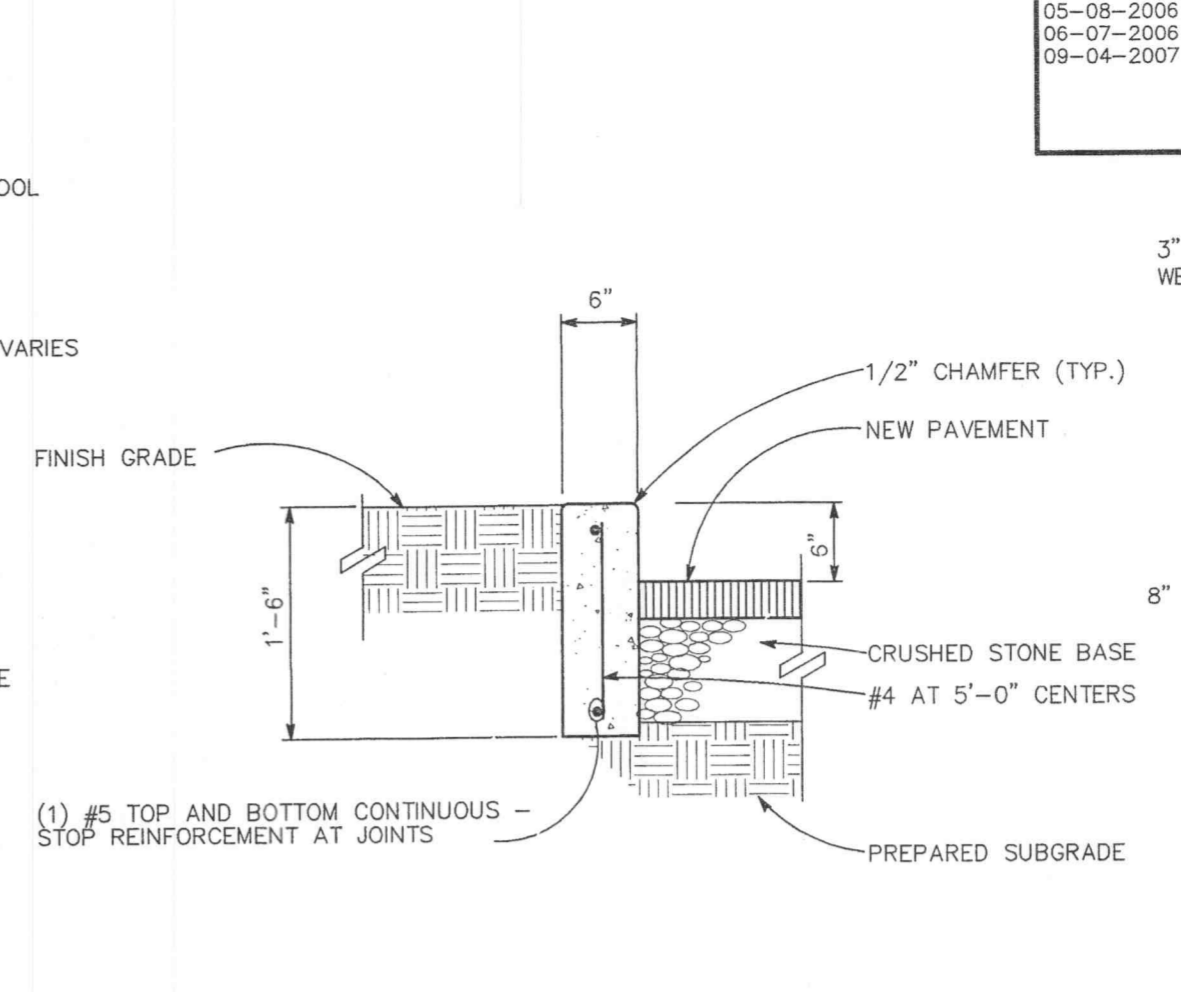


**3' HIGH VINYL PRIVACY FENCE FOR AROUND MECHANICAL UNITS**  
 NOT TO SCALE

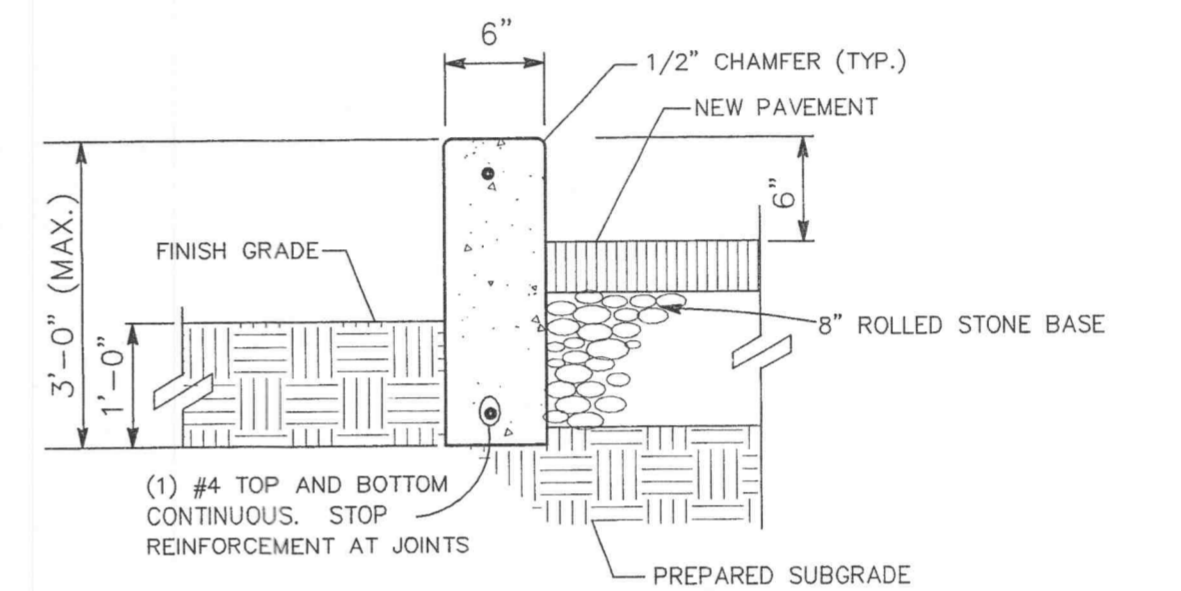
THIS DETAIL HAS BEEN PROVIDED FOR CONCEPTUAL APPROVAL ONLY. EXACT DETAIL OF MATERIAL AND CONSTRUCTION METHODS SHALL BE OUTLINES IN THE ARCHITECTURAL BUILDING PLANS.



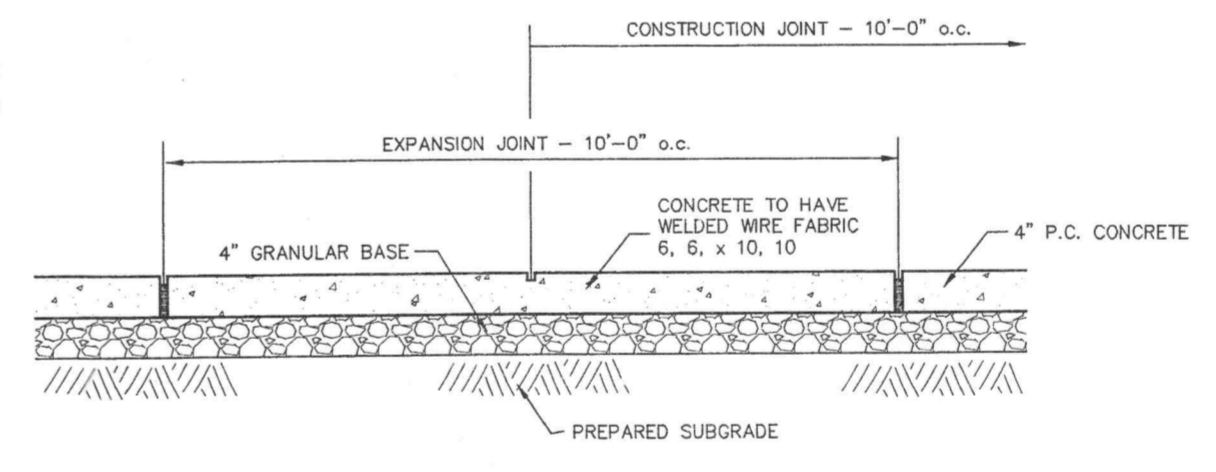
**2. ELEVATION**  
 NOT TO SCALE



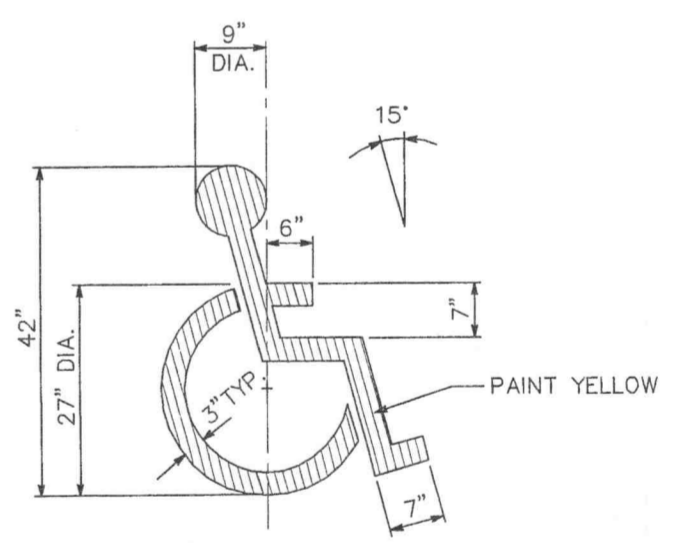
**CONCRETE CURB DETAIL**  
 NOT TO SCALE



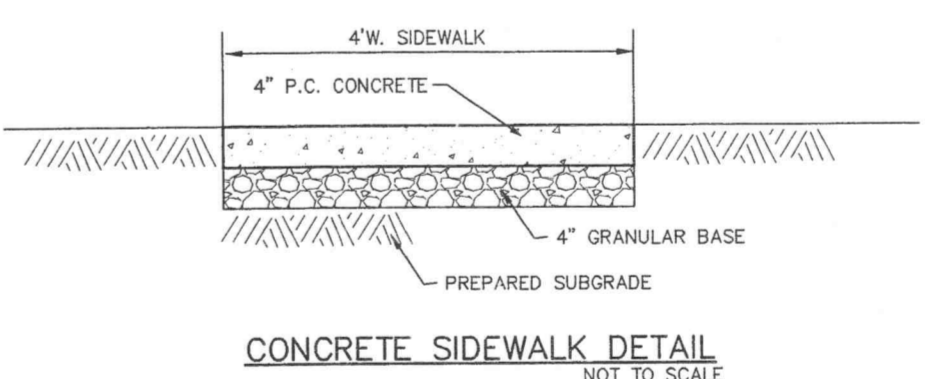
**EXTENDED CURB DETAIL**  
 NOT TO SCALE



**CONCRETE SIDEWALK DETAIL**  
 NOT TO SCALE



**PAINTED HANDICAPPED PARKING SYMBOL**  
 NOT TO SCALE



**HANDICAP PARKING SIGN (CITY OF O'FALLON)**  
 NOT TO SCALE

STANDARD SIGN FACE, STANDARD HIGHWAY DEPARTMENT, OR CITY STREET DEPARTMENT GAUGE, LETTERS AND BORDERS ARE GREEN, THE HANDICAP LOGO SQUARE IS BLUE AND THE BACKGROUND IS WHITE, GALVANIZED U CHANNEL POST 9'-0" LONG, SET 3'-0" INTO GRADE, SET BOTTOM OF "FINE" SIGN 5'-0" ABOVE FINISHED GRADE.

UNDERGROUND UTILITIES HAVE BEEN PLOTTED FROM AVAILABLE INFORMATION AND THEREFORE THEIR LOCATIONS SHALL BE CONSIDERED APPROXIMATE ONLY. THE VERIFICATION OF THE LOCATION OF ALL UNDERGROUND UTILITIES, EITHER SHOWN OR NOT SHOWN ON THESE PLANS SHALL BE THE RESPONSIBILITY OF THE CONTRACTOR, AND SHALL BE LOCATED PRIOR TO ANY GRADING OR CONSTRUCTION OF THE IMPROVEMENTS.

O'FALLON #2001.11 DEC. 15, 2005