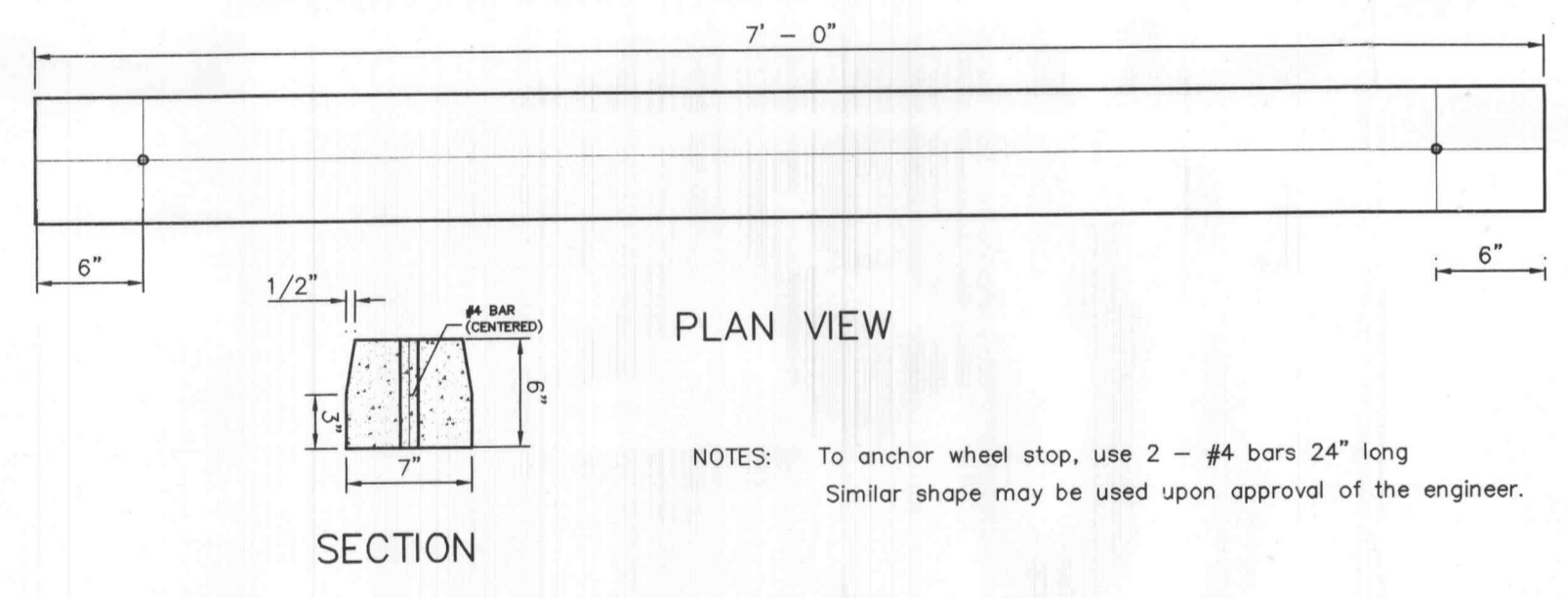


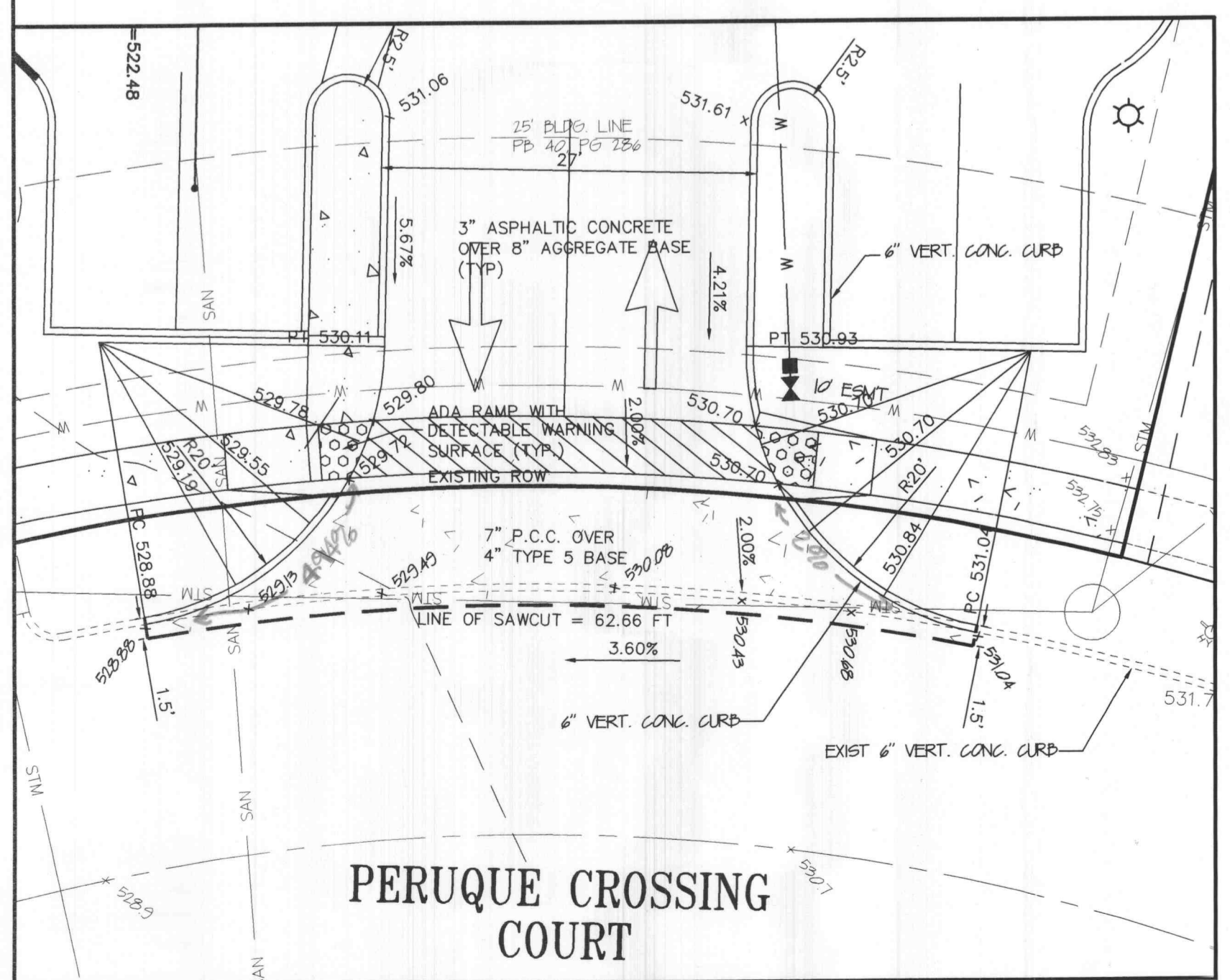
CONSTRUCTION SPECIFICATIONS

1. Stone Size - Use 2" stone, or reclaimed or recycled concrete equivalent.
2. Length - As required, but not less than 50 feet (except on a single residence lot where a 30 foot minimum length would apply).
3. Thickness - Not less than six (6) inches.
4. Width - Twenty (20) foot minimum, but not less than the full width at points where ingress or egress occurs.
5. Filter Cloth - Will be placed over the entire area prior to placing of stone. Filter will not be required on a single family residence lot.
6. Surface Water - All surface water flowing or diverted toward construction entrances shall be piped across the entrance. If piping is impractical, a mountable berm with 5:1 slopes will be permitted.
7. Maintenance - The entrance shall be maintained in a condition which will prevent tracking or flowing of sediment onto public rights-of-way. This may require periodic top dressing with additional stone as conditions demand and repair and/or cleanout of any measures used to trap sediment. All sediment spilled, dropped, washed or tracked onto public rights-of-way must be removed immediately.
8. Washing - Wheels shall be cleaned to remove sediment prior to entrance onto public rights-of-way. When washing is required, it shall be done on an area stabilized with stone and which drains into an approved sediment trapping device.
9. Periodic inspection and needed maintenance shall be provided after each rain.

STABILIZED CONSTRUCTION ENTRANCE/WASHDOWN AREA
 NOT TO SCALE

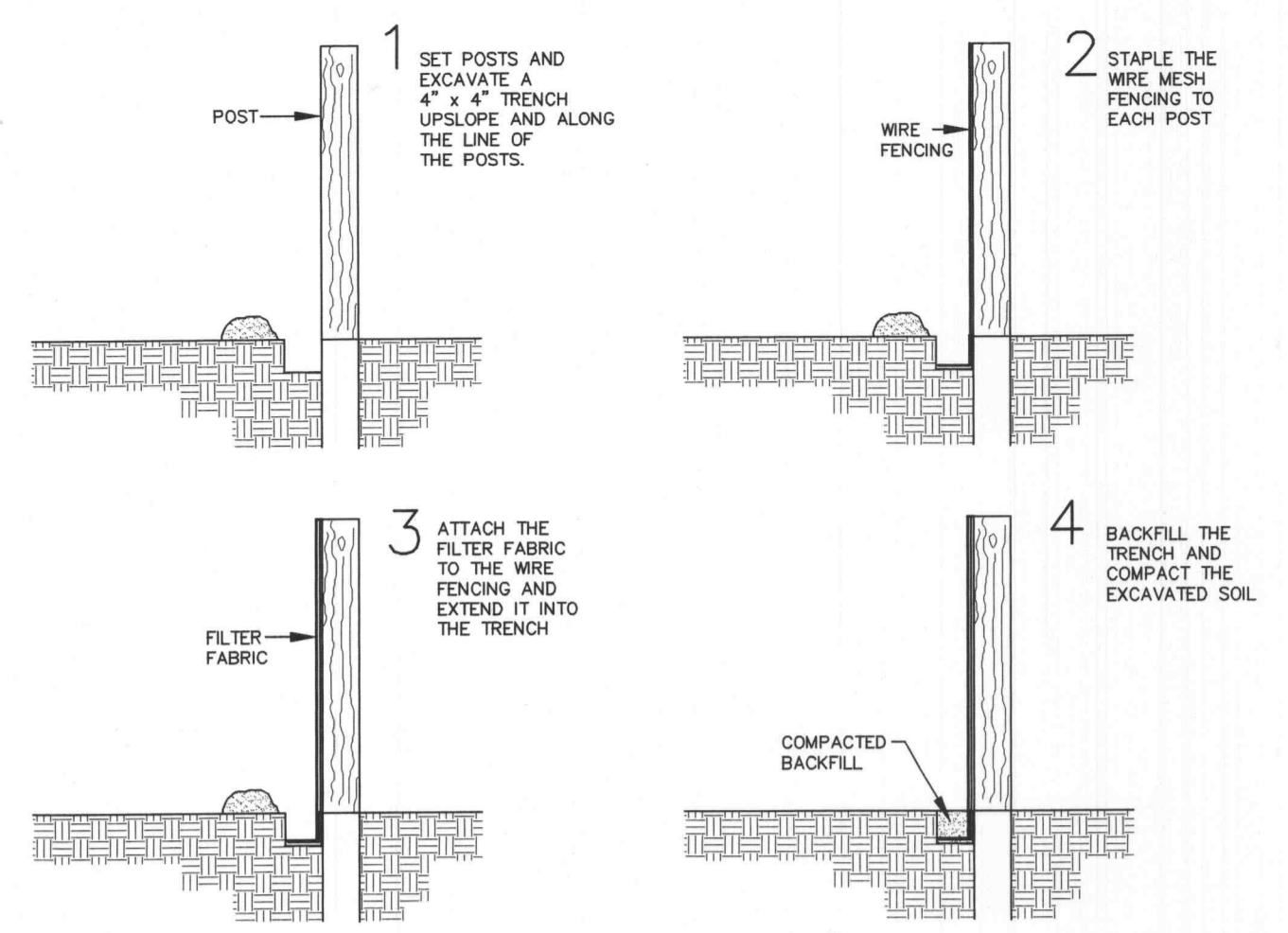


PRECAST CONCRETE WHEELSTOP



PERUQUE CROSSING COURT
ENTRANCE DETAIL
 SCALE: 1:10

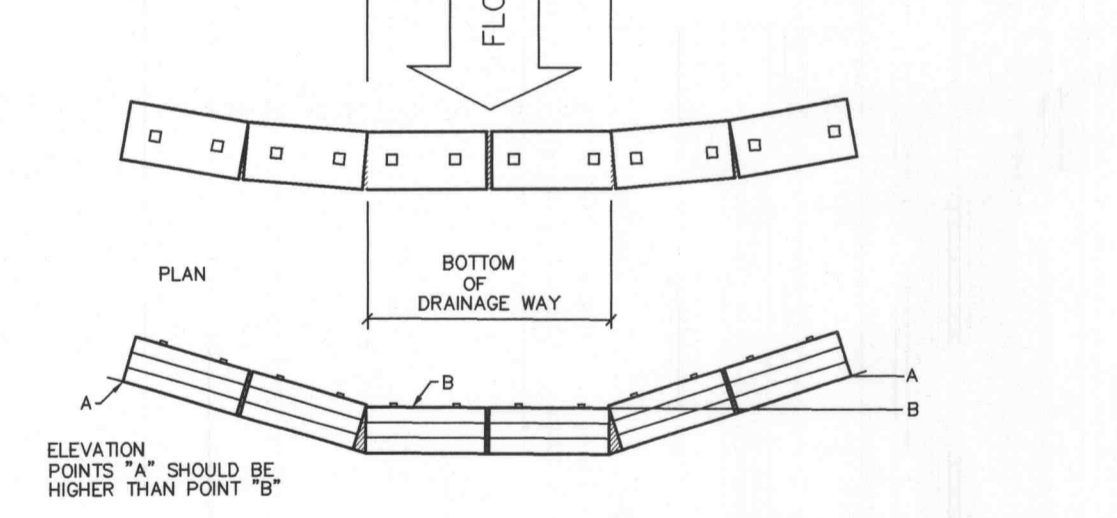
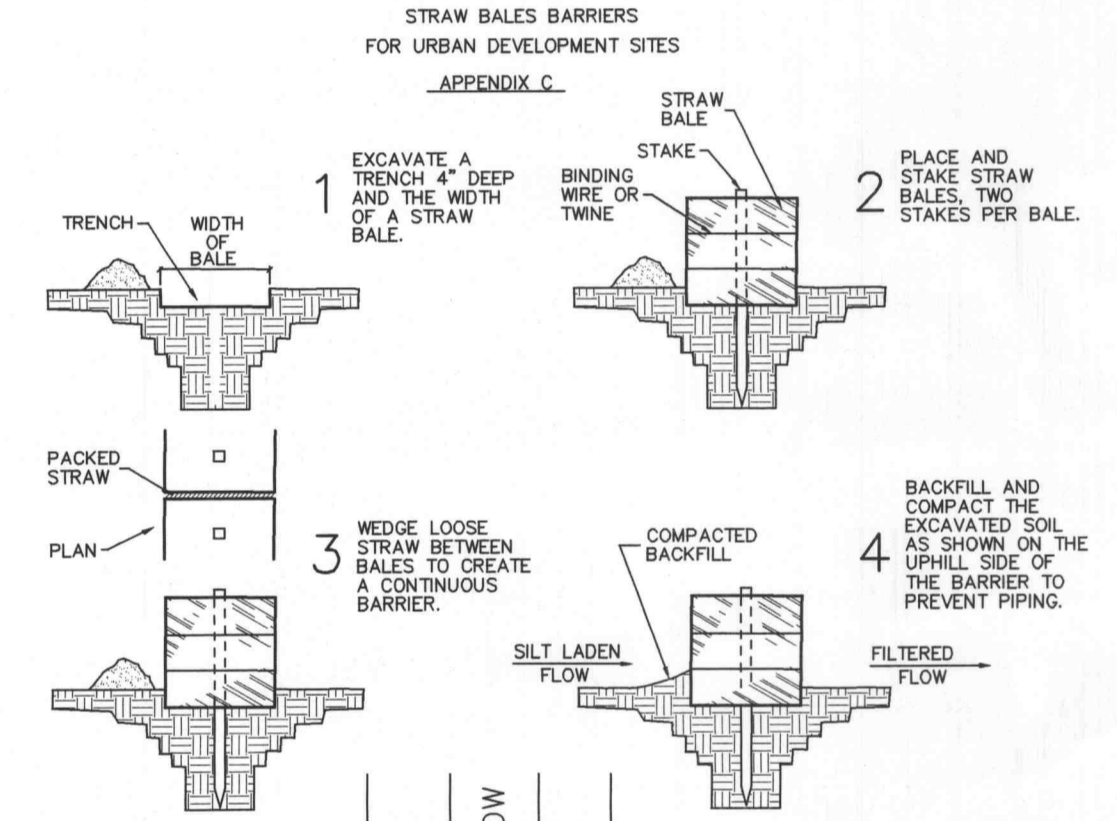
NOTE: EXISTING PAVEMENT TO BE REMOVED TO NEAREST JOINT.
 NOTE: ALL SPOTS TO TOP OF PAVEMENT.



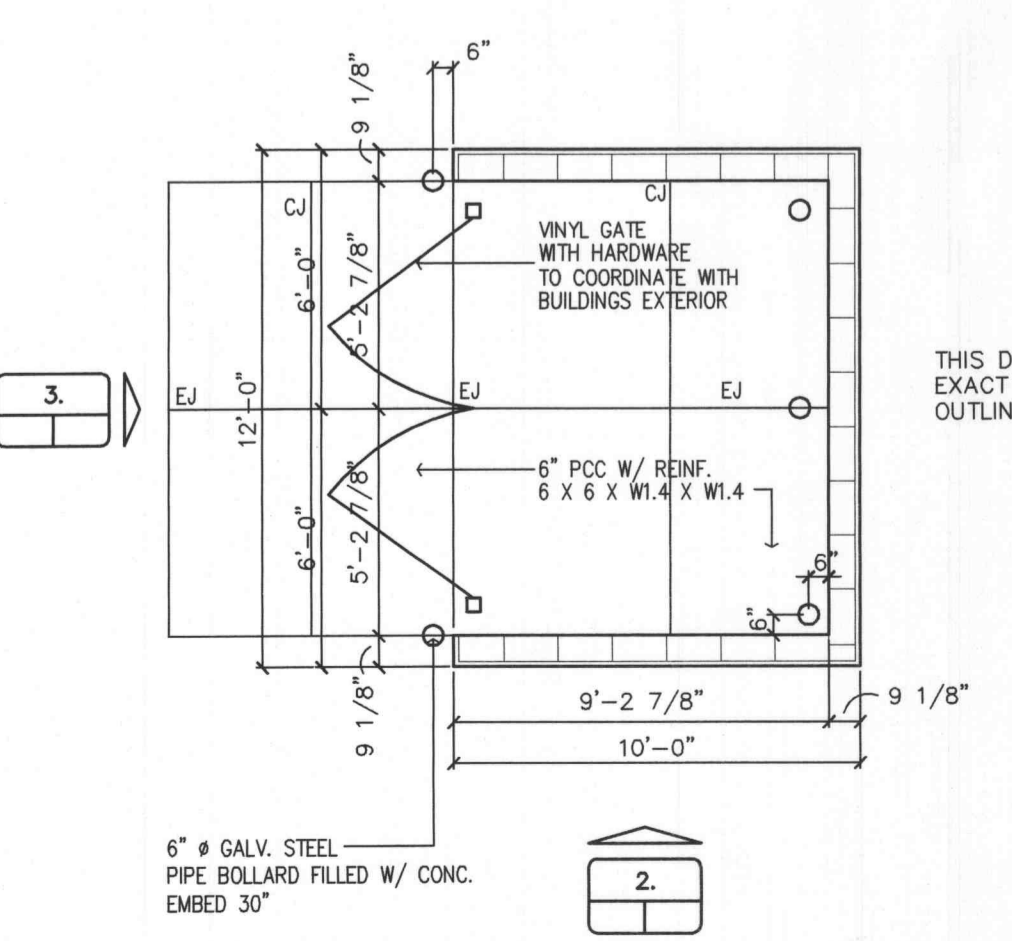
1. FILTER BARRIERS SHALL BE INSPECTED IMMEDIATELY AFTER EACH RAINFALL AND AT LEAST DAILY DURING PROLONGED RAINFALL. ANY REQUIRED REPAIRS SHALL BE MADE IMMEDIATELY.
2. SHOULD THE FABRIC DECOMPOSE OR BECOME INEFFECTIVE PRIOR TO THE END OF THE EXPECTED USABLE LIFE AND THE BARRIER STILL BE NECESSARY, THE FABRIC SHALL BE REPLACED PROMPTLY.
3. SEDIMENT DEPOSITS SHOULD BE REMOVED AFTER EACH STORM EVENT. THEY MUST BE REMOVED WHEN DEPOSITS REACH APPROXIMATELY HALF THE HEIGHT OF THE BARRIER.
4. ANY SEDIMENT DEPOSITS REMAINING IN PLACE AFTER THE SILT FENCE OR FILTER BARRIER IS NO LONGER REQUIRED SHALL BE DRESSED TO CONFORM WITH THE EXISTING GRADE, PREPARED AND SEEDDED.



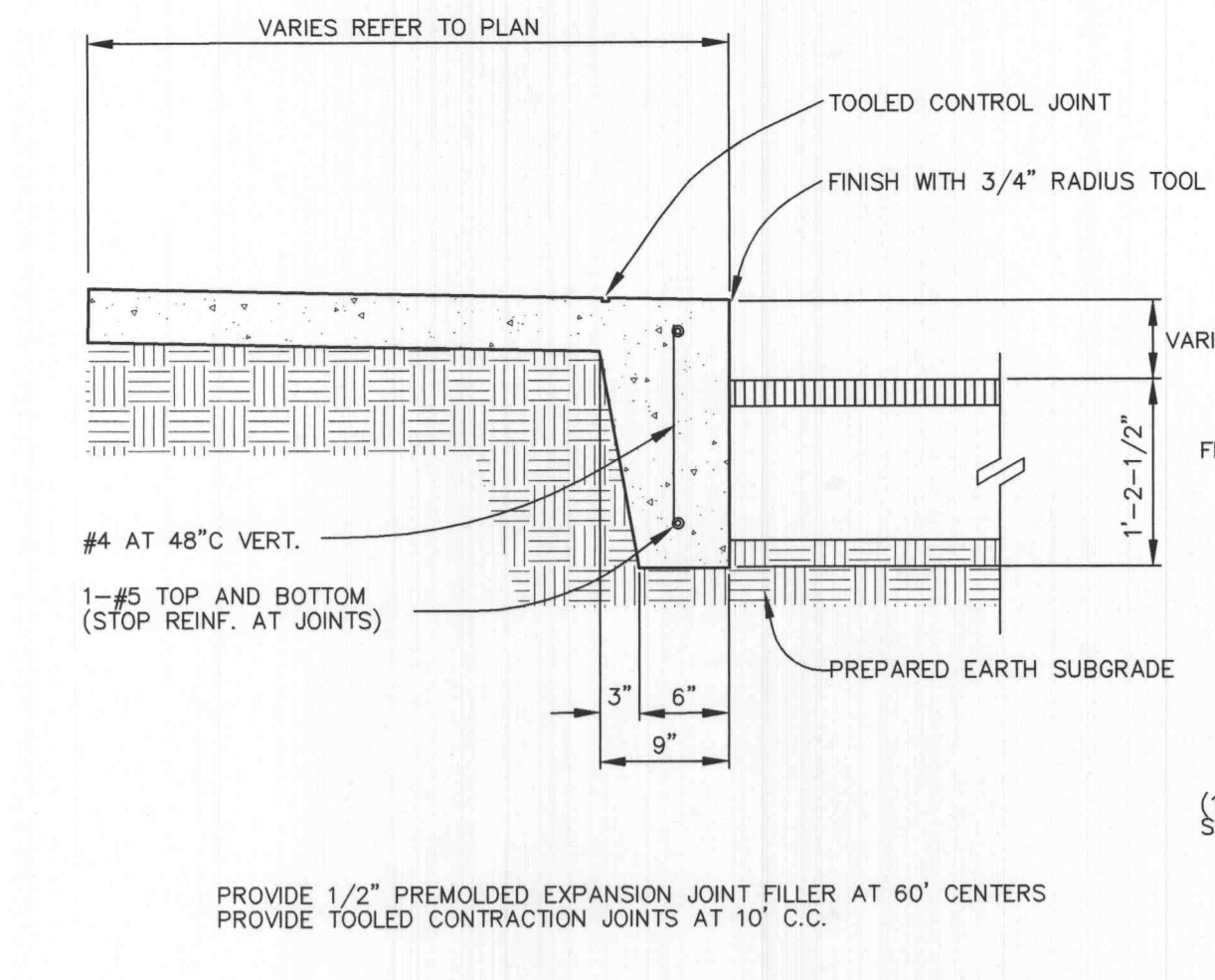
SILTATION FENCE DETAIL



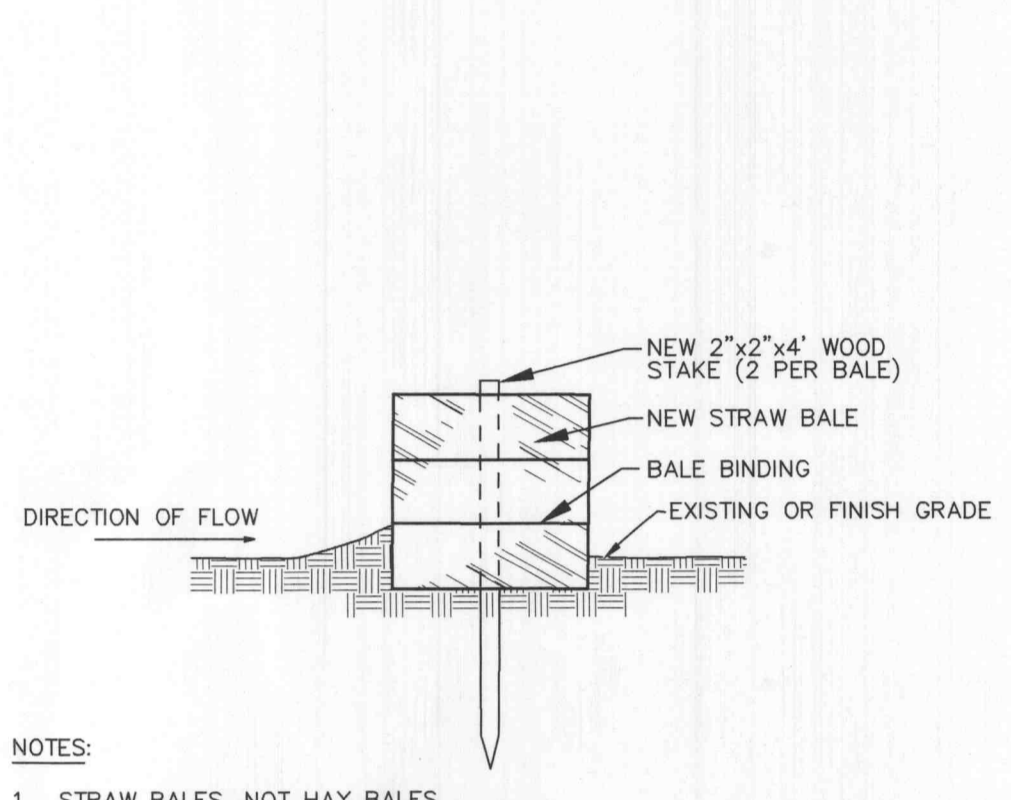
PLACEMENT AND CONSTRUCTION OF STRAW BALE BARRIER



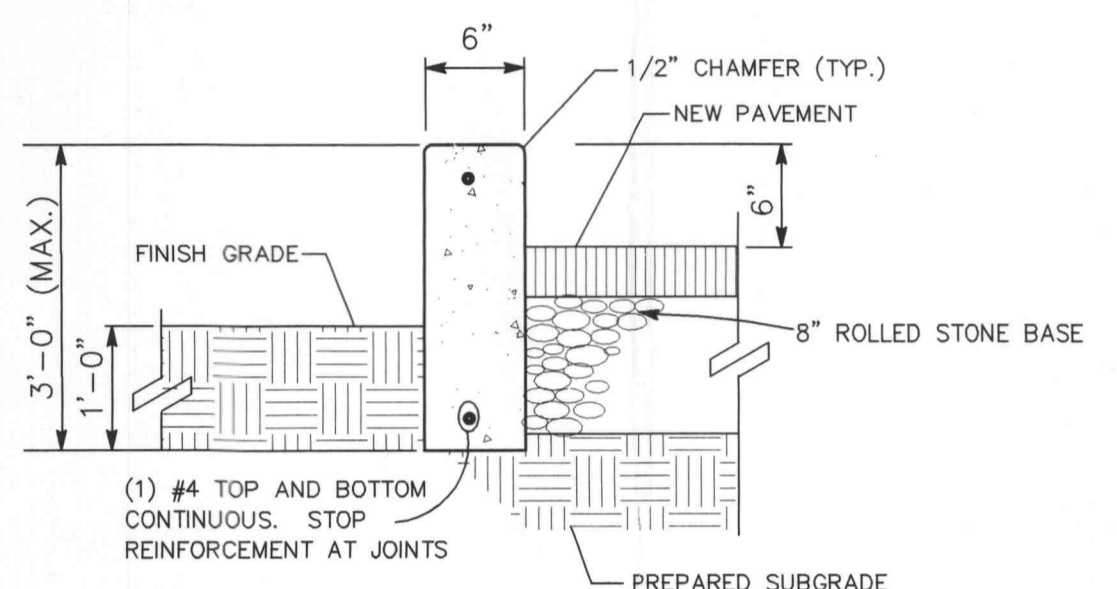
1. TRASH ENCLOSURE PLAN
 NOT TO SCALE



TURNED DOWN CONCRETE WALK
 NOT TO SCALE



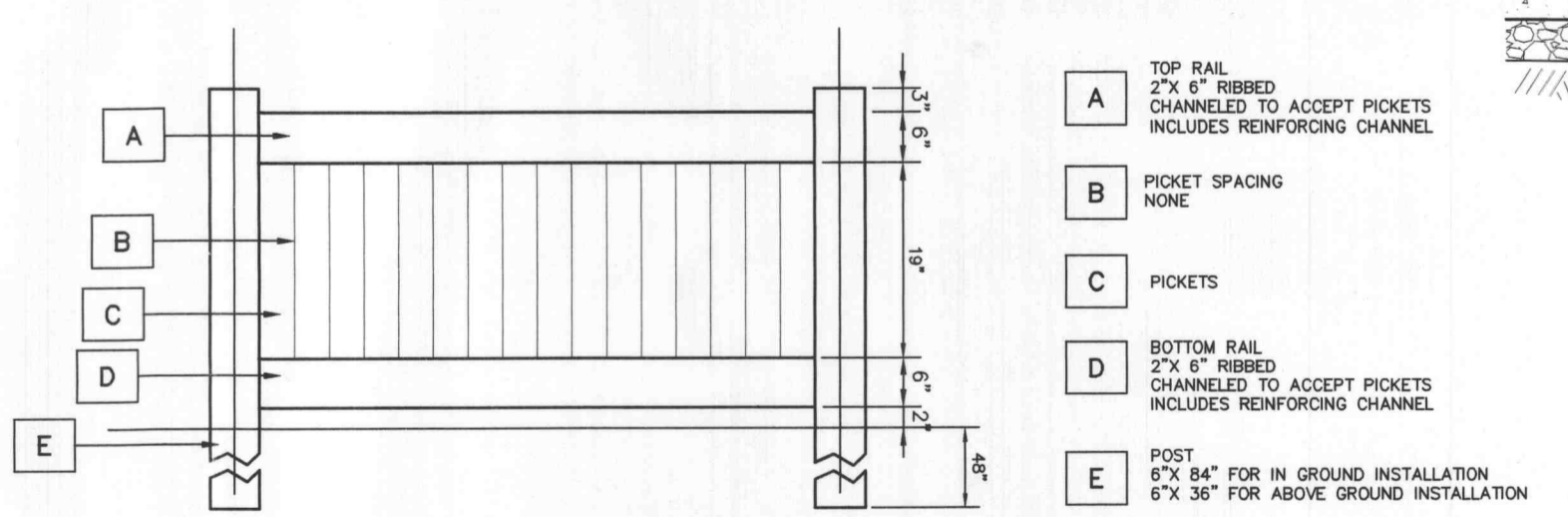
CONCRETE CURB DETAIL
 NOT TO SCALE



EXTENDED CURB DETAIL
 NOT TO SCALE

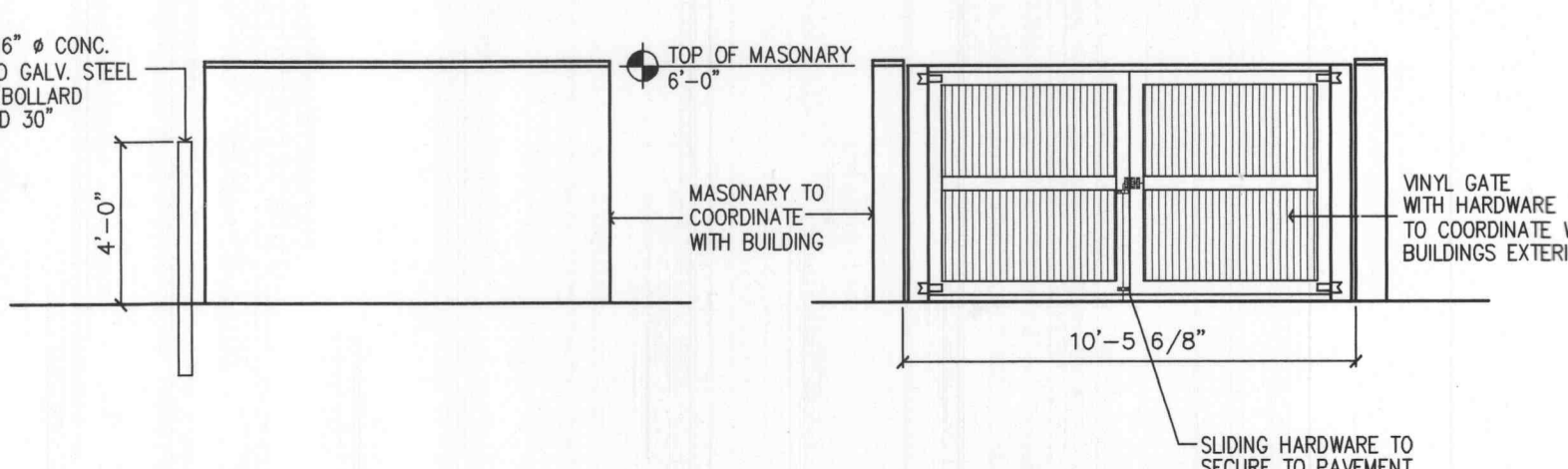
- NOTES:
1. STRAW BALES, NOT HAY BALES SHALL BE USED.
 2. BUTT ENDS OF BALES TIGHTLY TOGETHER.
 3. INSTALL BALES WITH BINDING AROUND SIDES, NOT TOP AND BOTTOM.
 4. FILL ANY GAP BETWEEN BALES BY WEDGING LOOSE STRAW BETWEEN THEM.

SEDIMENT BARRIER
 NOT TO SCALE



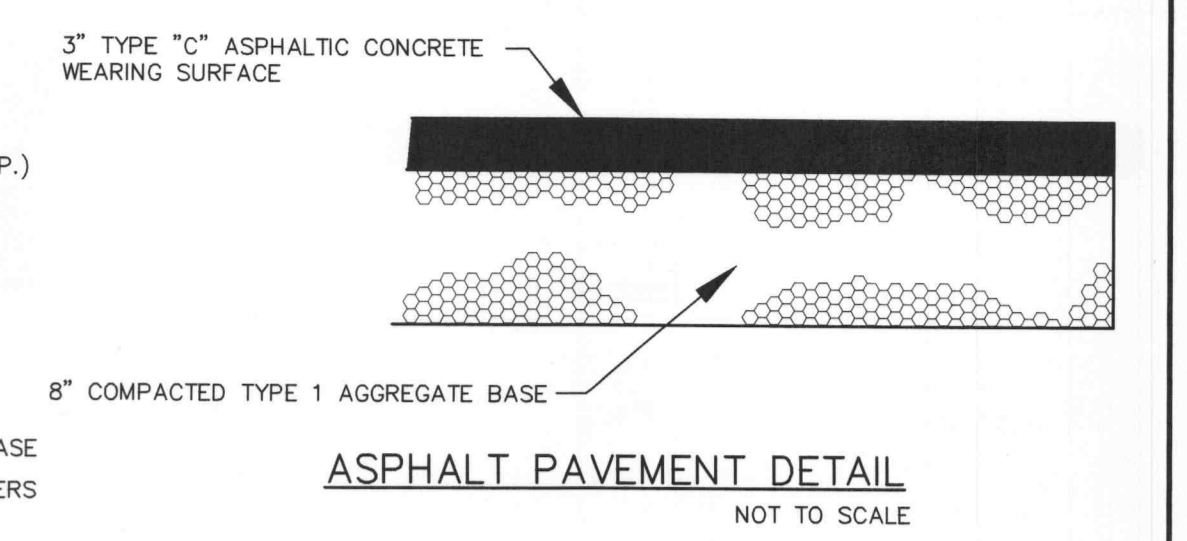
3' HIGH VINYL PRIVACY FENCE FOR AROUND MECHANICAL UNITS
 NOT TO SCALE

THIS DETAIL HAS BEEN PROVIDED FOR CONCEPTUAL APPROVAL ONLY. EXACT DETAIL OF MATERIAL AND CONSTRUCTION METHODS SHALL BE OUTLINES IN THE ARCHITECTURAL BUILDING PLANS.

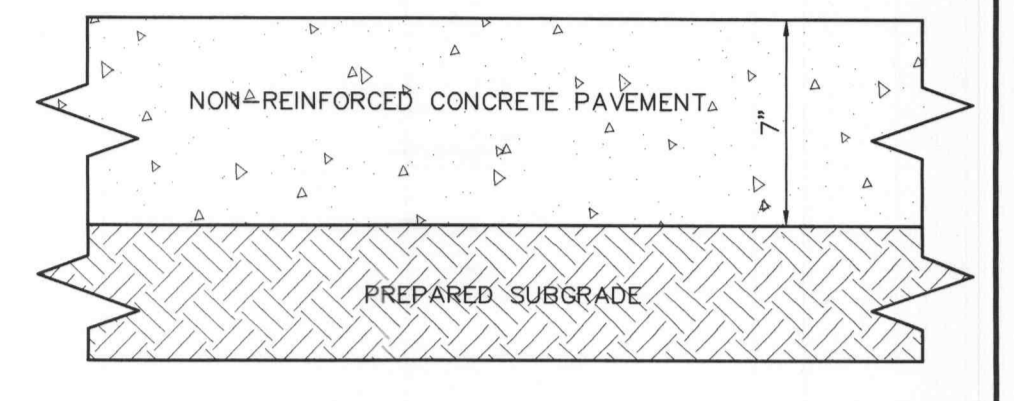


2. ELEVATION
 NOT TO SCALE

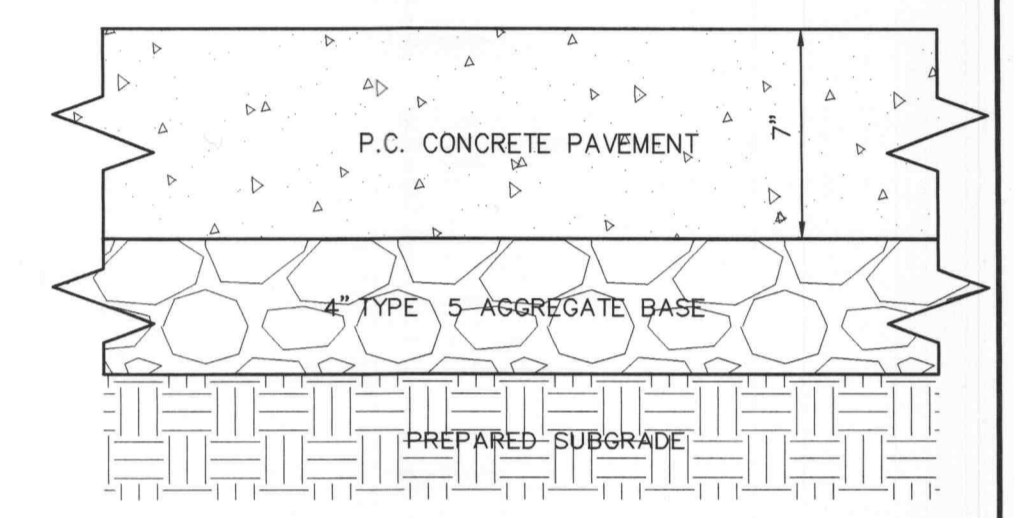
3. ELEVATION
 NOT TO SCALE



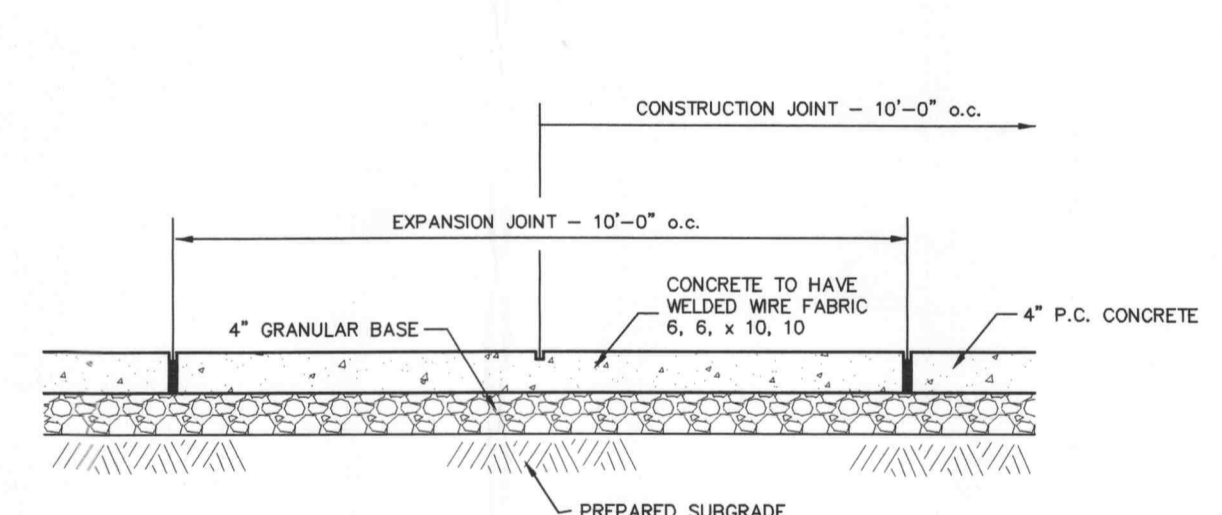
ASPHALT PAVEMENT DETAIL
 NOT TO SCALE



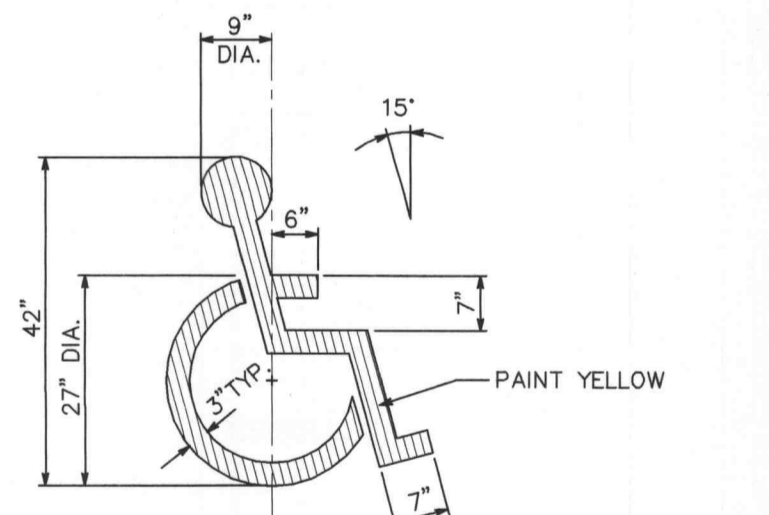
TRASH AREA PAVEMENT
 NOT TO SCALE



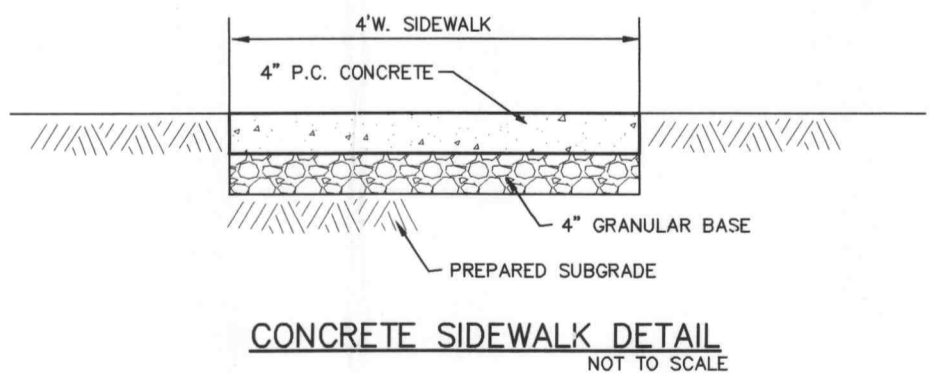
ENTRANCE PAVEMENT DETAIL
 NOT TO SCALE



CONCRETE SIDEWALK DETAIL
 NOT TO SCALE



PAINTED HANDICAPPED PARKING SYMBOL
 NOT TO SCALE



4' W. SIDEWALK
 NOT TO SCALE



HANDICAP PARKING SIGN (CITY OF O'FALLON)
 NOT TO SCALE

12" X 18" SIGN
 RESERVED PARKING
 \$50-\$300 FINE

STANDARD SIGN FACE, STANDARD HIGHWAY DEPARTMENT, OR CITY STREET DEPARTMENT GAUGE, LETTERS AND BORDERS ARE GREEN, THE HANDICAP LOGO SQUARE IS BLUE AND THE BACKGROUND IS WHITE. GALVANIZED U CHANNEL POST 9'-0" LONG, SET 3'-0" INTO GRADE, SET BOTTOM OF "FINE" SIGN 5'-0" ABOVE FINISHED GRADE.



UNDERGROUND UTILITIES HAVE BEEN PLOTTED FROM AVAILABLE INFORMATION AND THEREFORE THEIR LOCATIONS SHALL BE CONSIDERED APPROXIMATE ONLY. THE VERIFICATION OF THE LOCATION OF ALL UNDERGROUND UTILITIES, EITHER SHOWN OR NOT SHOWN ON THESE PLANS SHALL BE THE RESPONSIBILITY OF THE CONTRACTOR, AND SHALL BE LOCATED PRIOR TO ANY GRADING OR CONSTRUCTION OF THE IMPROVEMENTS.

O'FALLON #2001.11 DEC. 15, 2005

E:\DWG\11000PLUS\11282P\CONSTRUCTION\11282P-LOT4\CONSTRUCTION\11282P.con.dwg, DETAILS(5), 6/7/2006 1:07:59 PM, Sta. 62 JJ