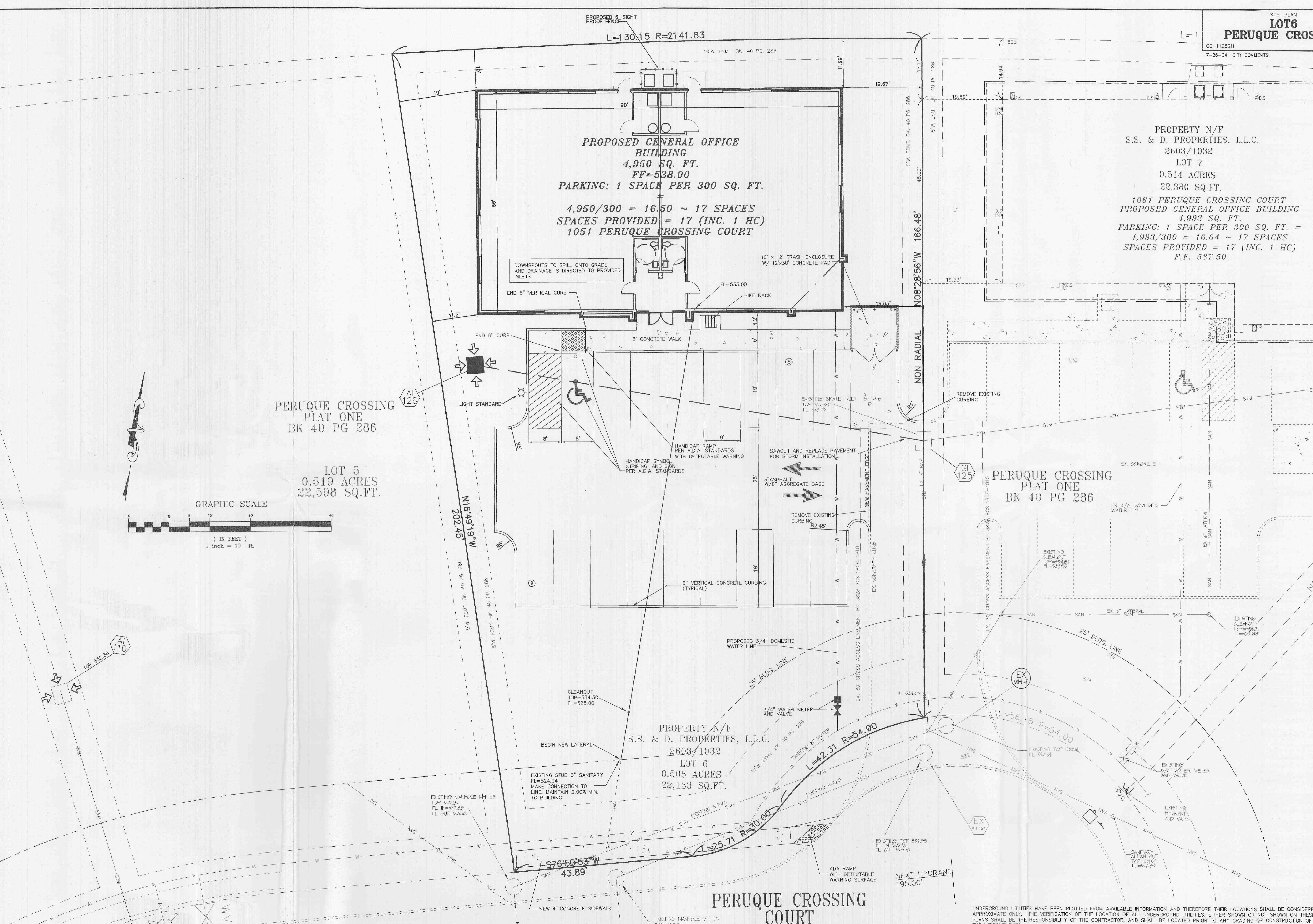
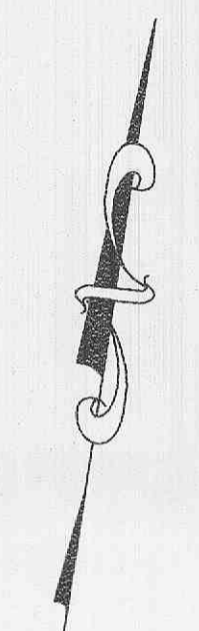
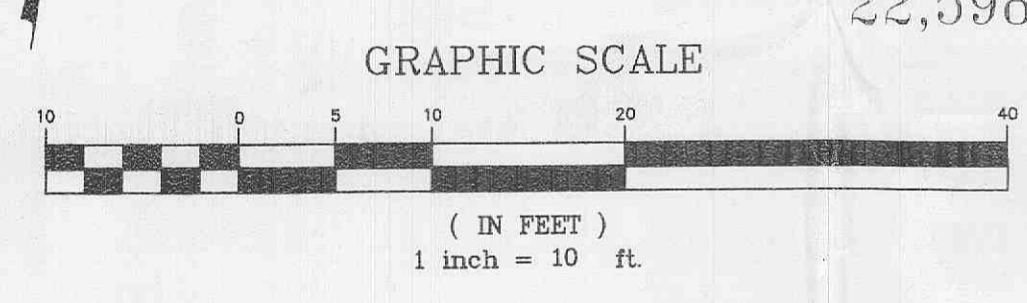


PROPERTY N/F  
 S.S. & D. PROPERTIES, L.L.C.  
 2603/1032  
 LOT 7  
 0.514 ACRES  
 22,380 SQ.FT.  
 1061 PERUQUE CROSSING COURT  
 PROPOSED GENERAL OFFICE BUILDING  
 4,993 SQ. FT.  
 PARKING: 1 SPACE PER 300 SQ. FT. =  
 4,993/300 = 16.64 ~ 17 SPACES  
 SPACES PROVIDED = 17 (INC. 1 HC)  
 F.F. 537.50

**PROPOSED GENERAL OFFICE BUILDING**  
 4,950 SQ. FT.  
 FF=538.00  
 PARKING: 1 SPACE PER 300 SQ. FT.  
 $4,950/300 = 16.50 \sim 17$  SPACES  
 SPACES PROVIDED = 17 (INC. 1 HC)  
 1051 PERUQUE CROSSING COURT

PERUQUE CROSSING  
 PLAT ONE  
 BK 40 PG 286

LOT 5  
 0.519 ACRES  
 22,598 SQ.FT.



PROPERTY N/F  
 S.S. & D. PROPERTIES, L.L.C.  
 2603/1032  
 LOT 6  
 0.508 ACRES  
 22,133 SQ.FT.

**PERUQUE CROSSING COURT**

UNDERGROUND UTILITIES HAVE BEEN PLOTTED FROM AVAILABLE INFORMATION AND THEREFORE THEIR LOCATIONS SHALL BE CONSIDERED APPROXIMATE ONLY. THE VERIFICATION OF THE LOCATION OF ALL UNDERGROUND UTILITIES, EITHER SHOWN OR NOT SHOWN ON THESE PLANS SHALL BE THE RESPONSIBILITY OF THE CONTRACTOR, AND SHALL BE LOCATED PRIOR TO ANY GRADING OR CONSTRUCTION OF THE IMPROVEMENTS.