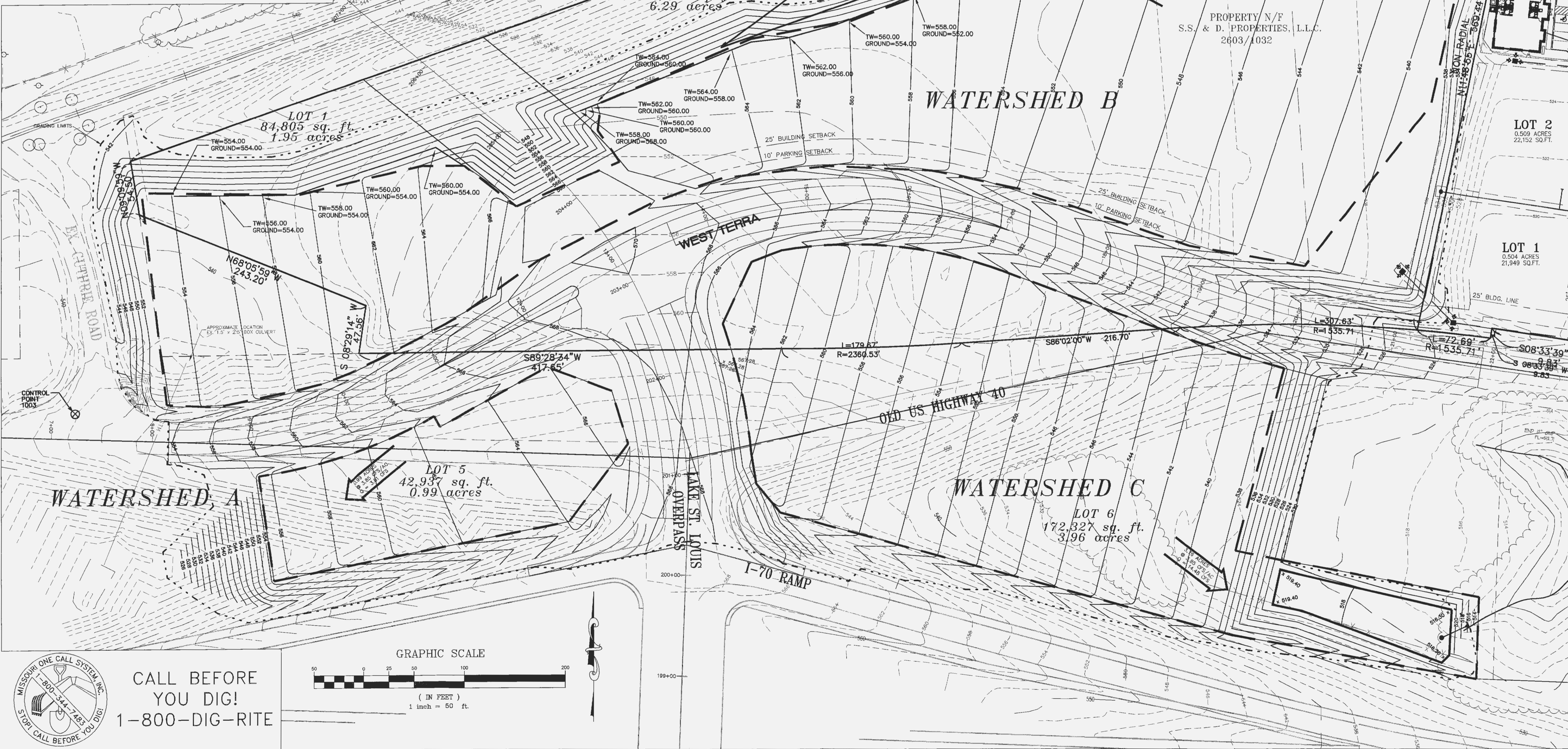
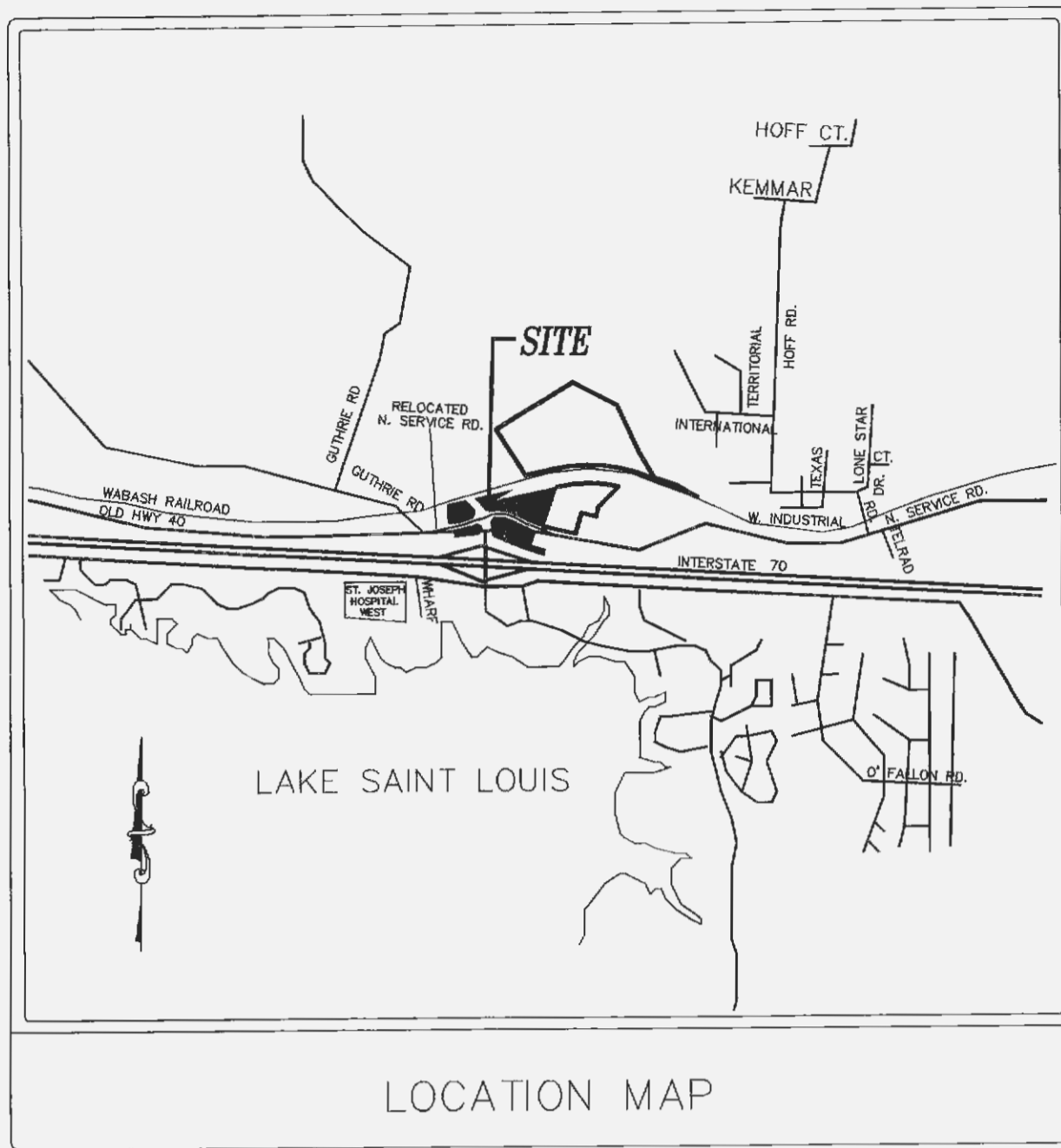
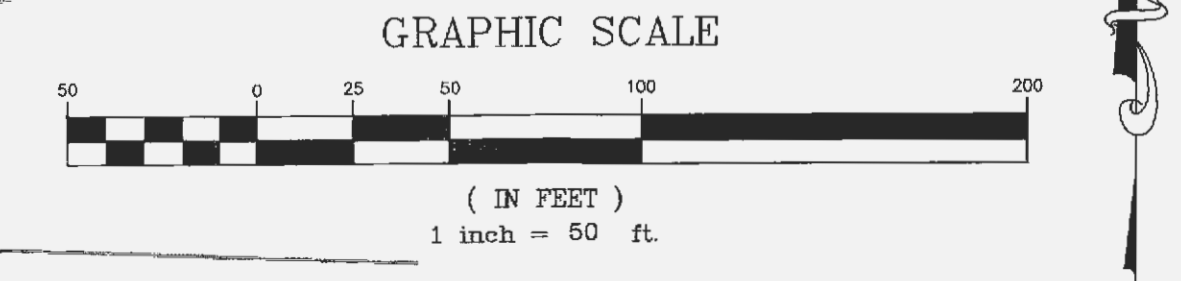


EXHIBIT A  
 PROPOSED DRAINAGE AREA MAP  
**PERUQUE CROSSING**  
 TWO TRACTS OF LAND IN  
 U.S. SURVEY 54,  
 AND FRACTIONAL SECTION 26,  
 TOWNSHIP 47 NORTH, RANGE 2 EAST  
 OF THE FIFTH PRINCIPAL MERIDIAN  
 ST. CHARLES COUNTY, MISSOURI



MISSOURI ONE CALL SYSTEM INC.  
 800-344-7433  
 5707 CALL BEFORE YOU DIG

CALL BEFORE  
 YOU DIG!  
 1-800-DIG-RITE



PREPARED FOR: S.S.&D. PROPERTIES, L.L.C.  
 501 FIRST CAPITOL DRIVE  
 ST. CHARLES, MISSOURI 63301  
 (636) 946-9753

DISCLAIMER OF RESPONSIBILITY  
 I hereby certify that the documents intended to be authorized by my seal are limited to this sheet, and I hereby disclaim any responsibility for all other drawings, Specifications, Estimates, Reports or other documents or instruments relating to or intended to be used for any part or parts of the architectural or engineering project or survey.

Copyright 2004  
 Box Engineering Company, Inc.  
 All Rights Reserved

REVISIONS


**Box**

ENGINEERING  
 PLANNING  
 SURVEYING

1052 South Cloverleaf Drive  
 St. Peters, MO. 63376-6445  
 636-928-5552  
 FAX 928-1718

3-31-04  
 DATE  
 00-11282C  
 PROJECT NUMBER  
 2 OF 2  
 SHEET OF  
 11282CMODOT  
 FILE NAME  
 TCF  
 DRAWN  
 TCF RLF  
 DESIGNED CHECKED