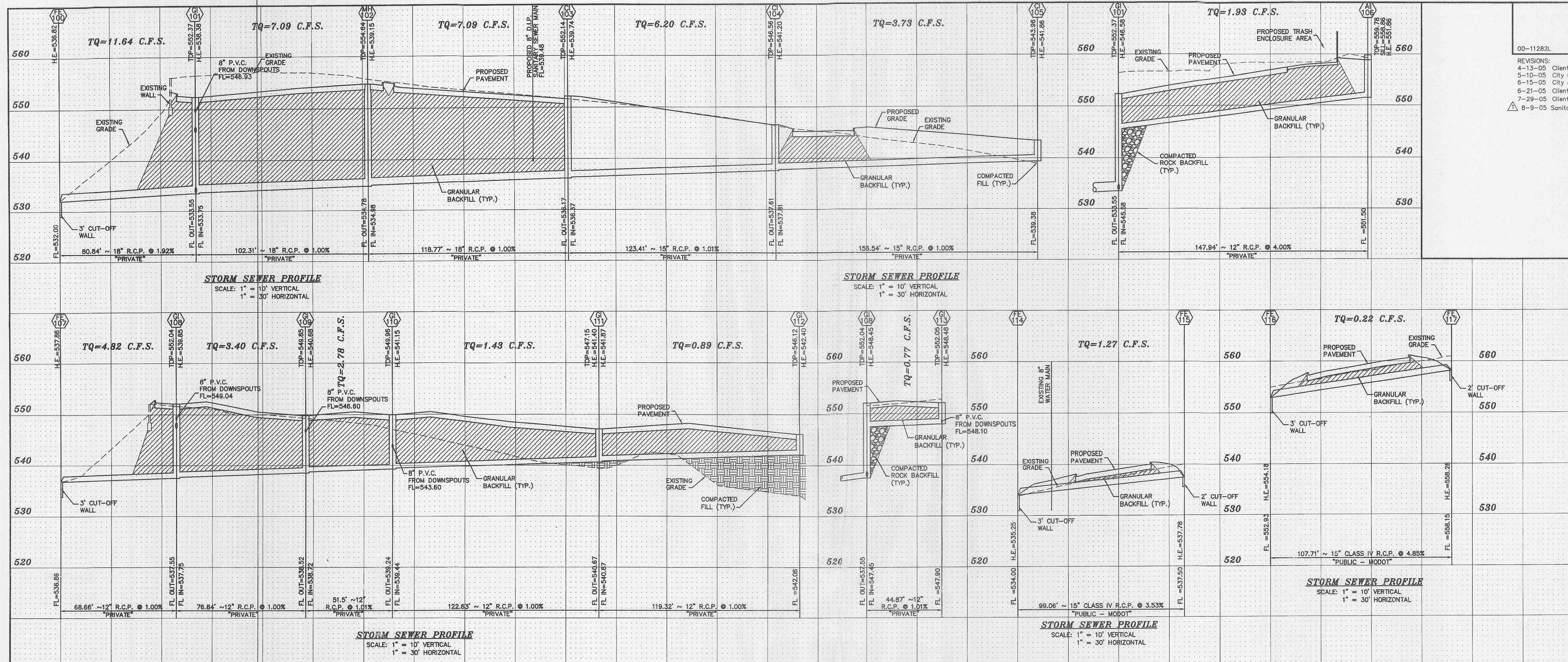


00-11282L 4-7-05
 REVISIONS:
 4-13-05 Client Revisions
 5-10-05 City Comments & Downspout Revisions
 5-15-05 City & Client Comments
 6-21-05 Client Revisions
 7-29-05 Client Revisions
 8-9-05 Sanitary Lateral Found, Omit main in lot

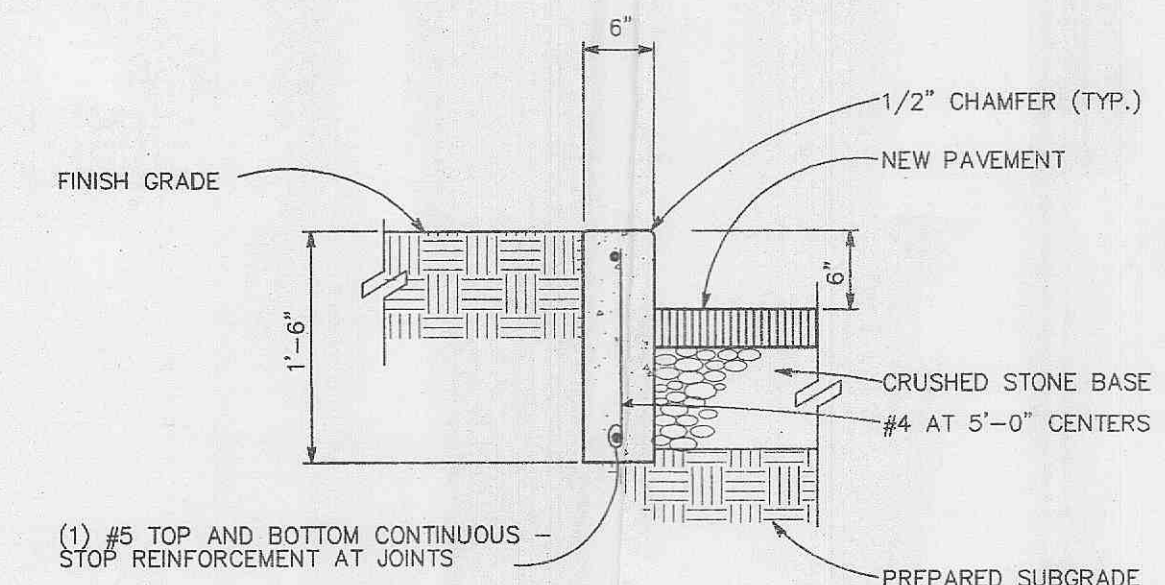


BAX PROJECT NAME : PERUQUE CROSSING RETAIL
 BAX PROJECT NO. : 00-11282L
 DESIGN DATE : 6-15-05
 DESIGNED BY : RLJ
 15 YEAR DESIGN STORM

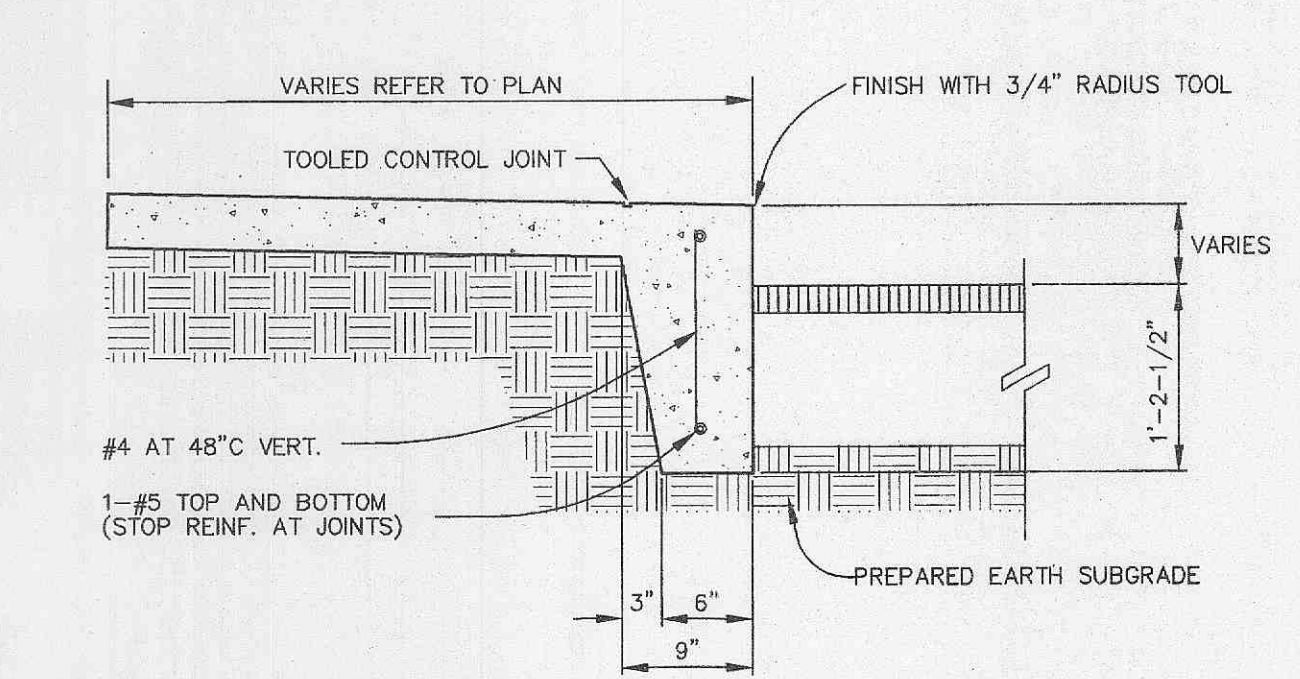
FILENAME: 11282L-4

UPP STR	LOW STR	L	DIA	UPPER FL LN	LOWER FL LN	PS	UPPER ST EL	DEPTH BY GR	UPPER BY EL	LOWER BY EL	ENVR GRADE	FR HEAD	VEL	VEL HEAD	JUNC LOSS	TURN LOSS	CURVE LOSS	STR GRADE	INL CAP	DR AREA	PI	Q	TQ	PIPE CAP	REMARKS	
FE 117	FE 116	108	15	558.15	552.93	4.85	559.40	1.13	558.28*	554.18	.00000	0.00	0.18	0.00	0.00	0.00	0.00	0.00	0.00	0.00	0.00	0.00	0.22	14.22	1	HW=554.18
FE 115	FE 114	99	15	537.50	534.00	3.53	538.75	0.97	537.78*	535.25	.00040	0.04	1.03	0.02	0.02	0.00	0.00	0.00	0.00	0.00	0.00	0.00	1.27	12.14	2	HW=535.25
GI 113	GI 108	45	12	547.90	547.45	1.00	551.90	3.42	548.48	548.45	.00050	0.02	0.98	0.01	0.01	0.00	0.00	0.00	0.00	0.00	0.00	0.00	0.77	3.57	3	
GI 112	GI 111	119	12	542.06	540.87	1.00	546.12	3.72	542.40*	541.87	.00060	0.07	1.13	0.02	0.02	0.00	0.00	0.00	0.00	0.00	0.00	0.00	0.89	3.56	4	
GI 111	GI 110	123	12	540.67	539.44	1.00	547.15	5.75	541.40	541.15	.00160	0.20	1.82	0.05	0.04	0.01	0.00	0.00	0.00	0.00	0.00	0.00	1.43	3.57	5	
GI 110	GI 109	52	12	539.24	538.72	1.01	549.96	8.81	541.15	540.68	.00610	0.31	3.54	0.19	0.16	0.00	0.00	0.00	0.00	0.00	0.00	0.00	2.78	3.58	6	
GI 109	GI 108	77	12	538.52	537.75	1.00	549.85	9.17	540.68	539.85	.00910	0.70	4.33	0.29	0.13	0.00	0.00	0.00	0.00	0.00	0.00	0.00	3.40	3.57	7	
GI 108	FE 107	69	12	537.55	536.86	1.00	552.04	12.19	539.85	537.86	.01830	1.26	6.14	0.58	0.52	0.21	0.00	0.00	0.00	0.00	0.00	0.00	4.82	3.57	8	HW=537.86
AI 106	GI 101	148	12	551.50	545.58	4.00	559.78	7.92	551.86*	546.58	.00290	0.43	2.46	0.09	0.09	0.00	0.00	0.00	0.00	0.00	0.00	0.00	1.93	7.13	9	
CI 105	CI 104	157	15	539.38	537.81	1.00	543.96	2.10	541.86	541.20	.00330	0.52	3.04	0.14	0.14	0.00	0.00	0.00	0.00	0.00	0.00	0.00	3.73	6.47	10	
CI 104	CI 103	123	15	537.61	536.37	1.00	546.56	5.36	541.20	539.74	.00920	1.14	5.05	0.40	0.32	0.00	0.00	0.00	0.00	0.00	0.00	0.00	6.20	6.48	11	
CI 103	MH 102	119	18	536.17	534.98	1.00	552.14	12.40	539.74	539.15	.00460	0.54	4.01	0.25	0.00	0.05	0.00	0.00	0.00	0.00	0.00	0.00	7.09	10.51	12	
MH 102	GI 101	102	18	534.78	533.75	1.01	554.64	15.49	539.15	538.38	.00460	0.47	4.01	0.25	0.15	0.15	0.00	0.00	0.00	0.00	0.00	0.00	10.54	13		
GI 101	FE 100	81	18	533.55	532.00	1.92	552.37	13.99	538.38	536.82	.01230	0.99	6.59	0.67	0.51	0.06	0.00	0.00	0.00	0.00	0.00	0.00	11.64	14.55	14	HW=536.82

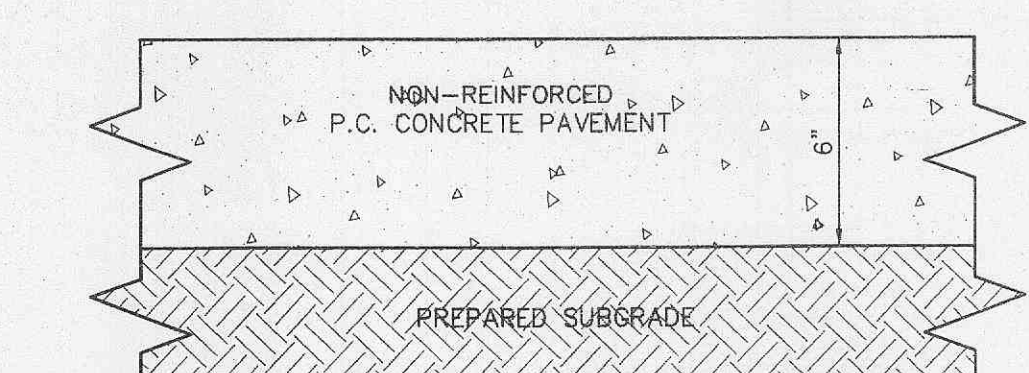
* INDICATES CRITICAL DEPTH



CONCRETE CURB DETAIL
NOT TO SCALE



TURNED DOWN CONCRETE WALK
NOT TO SCALE



TRASH PAVEMENT DETAIL
NOT TO SCALE