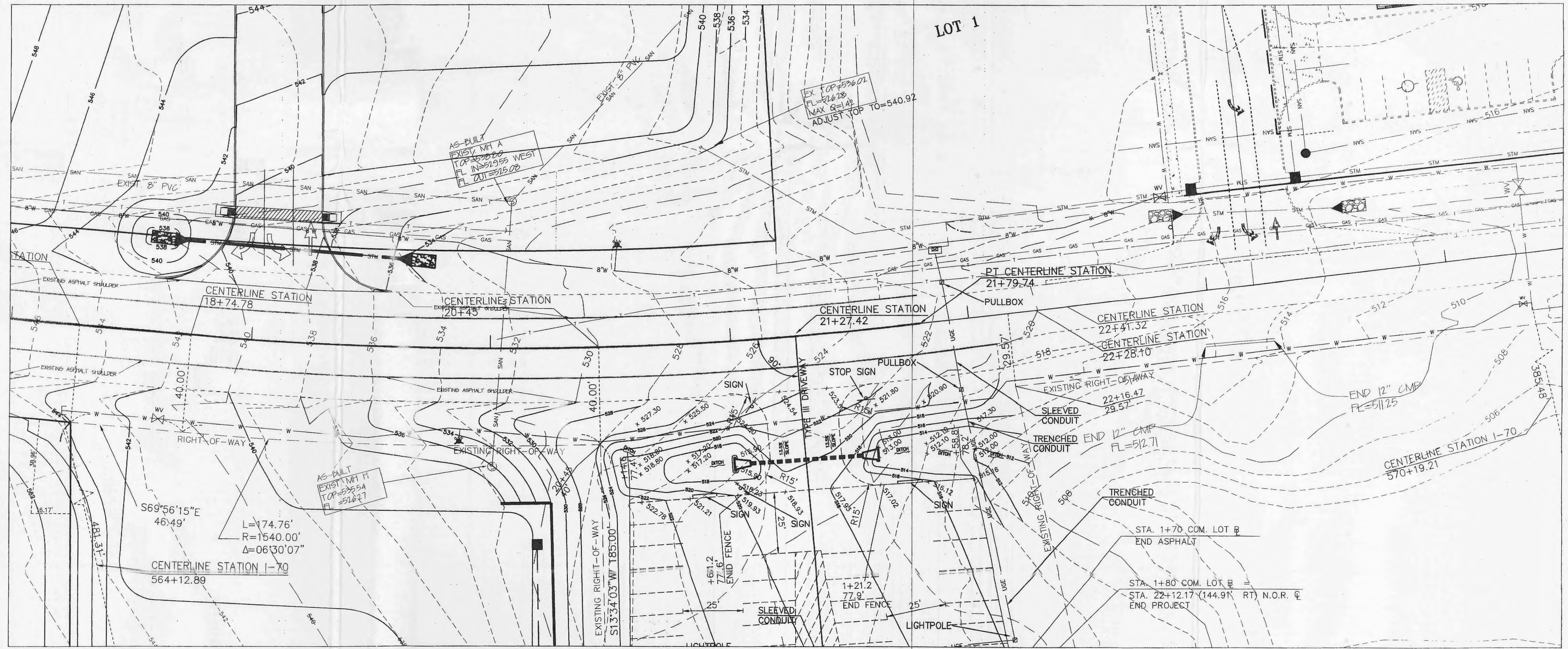


CONTRACTOR TO PLACE NEW WATERMAIN WITH ADEQUATE COVERAGE TO ACCOMMODATE FUTURE MODOT WORK FOR THE COMMUTER LOT. SPOT ELEVATIONS ARE PER PLANS OBTAINED FROM MODOT ON 12/21/05. MODOT JOB #J6P1770.



E:\DWG\11000PLUS\11282 PERUQUE CROSSING WATER\11282CWATERREV.DWG, WATER GRADING-5, 12/26/2005 1:51:46 PM, L1, Sta 36 SWR