

PLANT SCHEDULE

CODE	QTY.	GENUS	SPECIES	COMMON NAME	SIZE	COND.	COMMENTS
DECIDUOUS TREES							
A	4	ACER	RUBRUM 'AUTUMN FLAME'	RED MAPLE	2" CAL. MIN.	B&B	
B	3	QUERCUS	RUBRA	RED OAK	2" CAL. MIN.	B&B	
FLOWERING/ORNAMENTAL TREES							
C	5	CERCIS	CANADENSIS	RED BUD	4' HT. MIN.	B&B	
D	4	BETULA	NIGRA	RIVER BIRCH	4' HT. MIN.	B&B	MULTI-STEM
EVERGREEN TREES							
E	4	PICEA	OMORIKA	SERBIAN SPRUCE	6'-8' HT. MIN.	B&B	
SHRUBS/ORNAMENTAL GRASSES							
F	18	CORNUS	VAR.	RED TWIG DOGWOOD	24"-36" MIN.	CONT.	
G	22	WEIGELA	FLORIDA 'ALEXANDER' WINE & ROSES	WEIGELA	24"-36" MIN.	CONT.	
H	39	BUXUS	'GREEN VELVET'	GREEN VELVET BOXWOOD	24"-36" MIN.	CONT.	PLANT 2" O.C.
UPRIGHT EVERGREEN SHRUBS							
I	3	JUNIPERUS	SCOPULORUM 'WICHITA BLUE'	ROCKY MOUNTAIN JUNIPER	4' HT. MIN.	B&B	
GROUND COVERS							
J	115	LIRIOPE	MUSCARI 'BIG BLUE'	LILY TURF	1 GAL.	CONT.	18" O.C.

GENERAL NOTES:

- LANDSCAPE CONTRACTOR TO VERIFY LOCATION OF UNDERGROUND UTILITIES BEFORE BEGINNING WORK.
- ALL LANDSCAPE SHALL COMPLY WITH THE CURRENT EDITION OF ANSI Z 60.1 "AMERICAN STANDARD FOR NURSERY STOCK."
- ALL PLANTS SHALL MEET THE REQUIREMENTS OF THE STATE AND FEDERAL LAW WITH RESPECT TO DISEASE AND INSECT INFESTATION.
- MULCH AREAS WITH TRIPLE GROUND HARDWOOD MULCH 3" MIN. DEPTH.
- ALL LANDSCAPE SUBSTITUTIONS MUST BE APPROVED BY THE LANDSCAPE ARCHITECT.
- FORMAL LINES AND GROUPINGS OF A SPECIES OF TREE, SHRUB, OR GROUNDCOVER SHALL BE MATCHED FOR SIZE, FORM, AND COLOR.
- ALL BACKFILL IN PLANTING BEDS AND TREE PITS SHALL BE BACKFILLED WITH PLANTING SOIL.
- ALL TREES OUTSIDE OF PLANT BEDS SHALL BE PLANTED WITH A MULCH RING.
- ALL LANDSCAPING SHALL BE INSTALLED AS SHOWN ON THE APPROVED PLAN.
- AT PLANTING, TREE TRUNKS MUST BE STRAIGHT WITH MINIMAL DOGLEGS.
- WIRE BASKETS, BURLAP WRAPPINGS, ROPE, TWINE OR ANY SIMILAR SHIPPING MATERIALS SHALL BE REMOVED BEFORE PLANTING.
- A SPADE CUT EDGE SHALL BE CREATED AT ALL LOCATIONS WHERE PLANTING BEDS ARE ADJACENT TO GRASS AREAS UNLESS OTHERWISE NOTED.
- SEE CIVIL PLANS FOR TYPE AND LOCATION OF EROSION CONTROL MATERIALS.
- DO NOT DISTURB EXISTING UTILITIES WITHIN WORK AREA. SILT FENCE AND PLANTINGS SHALL AVOID ANY EXISTING UTILITIES.
- OPTIMAL TIME FOR PLANTING TREES IS THE FALL OR EARLY SPRING, WHEN THE TREE IS DORMANT. PLANTING TREES AT OTHER TIMES IS DISCOURAGED DUE TO INCREASED STRESS ON THE TREE. IF YOU HAVE ANY QUESTIONS ON PLANTING TIMES CONTACT THE O'FALLON PARKS AND RECREATION DEPARTMENT.
- THE HOLE SHOULD BE DUG WITH THE WIDTH THREE (3) TIMES THE SPREAD OF THE ROOT BALL NO DEEPER THAN THE ROOT BALL. HOLES SHOULD HAVE SLANTED SIDES AND BE ROUGHED WITH A SHOVEL.
- TREES WILL BE PLANTED NO DEEPER THAN THE ORIGINAL ROOT FLARE. DO NOT CONFUSE A GRAFT UNION FOR THE ROOT FLARE. IN CLAY SOILS TREES CAN BE PLANTED SLIGHTLY HIGH. EXCAVATION AND SOIL REPLACEMENT MAY BE NECESSARY WHERE THERE IS OVERLAY COMPACTED SUBSOIL AND EXCESSIVE AMOUNTS OF GRAVEL.
- REMOVE TREE FROM POT OR CUT AWAY TWINE OR ROPE FROM STEM AND WIRE BASKET BELOW GROUND LEVEL. WHEN POSSIBLE, ROLL BACK BURLAP FROM TOP AND CUT OFF TOP ONE-THIRD (1/3) OF THE WIRE BASKET. ALWAYS REMOVE ALL PLASTIC TWINE AND ARTIFICIAL BURLAP.
- STRAIGHTEN TREE AND COMPLETELY BACKFILL HOLE WITH EXISTING SOIL. AVOID USING EXCESSIVE AMOUNTS OF ORGANIC MATTER.
- APPLY WATER TO SETTLE THE SOIL AND ELIMINATE ANY VOIDS. AT THIS TIME A SOLUTION OF ROOT STIMULATOR (NOT FERTILIZER) CAN BE WATERED IN.
- CHOP UP ANY DIRT CLOUDS; ADD SOIL IF NEEDED.
- PLACE A TWO (2) TO FOUR (4) INCH LAYER OF MULCH AROUND THE TREE IN A MINIMUM THREE (3) FOOT RADIUS. MAKE SURE THAT THE MULCH IS NOT MOUNDED AGAINST THE BASE OF THE TREE TRUNK.

TREE PRESERVATION NOTE:

- EXISTING TREES AND SHRUBS LOCATED IN THE PARKING LOT ISLANDS TO REMAIN. THERE ARE NO OTHER EXISTING TREES ON SITE. SEE NOTES ON PLAN.



BIKE RACK NOTE:

- PROPOSED BIKE RACKS TO MATCH EXISTING RACKS AT WINGHAVEN SHOPPES. BIKE RACK STYLE PI BIKE RACK FROM LANDSCAPE FORMS.

CONTACT:
 Carolyn Rolfs
 Sales Support for MO, IA, NE & KS
 Site Source, Inc.
 Office: 816.444.4376
 Fax: 413.203.3135
carolynr@landscapeforms.com
www.landscapeforms.com

DESIGN, CULTURE, CRAFT

STREET FRONTAGE LANDSCAPE

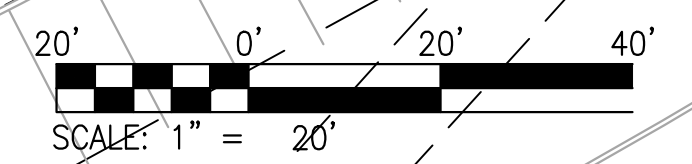
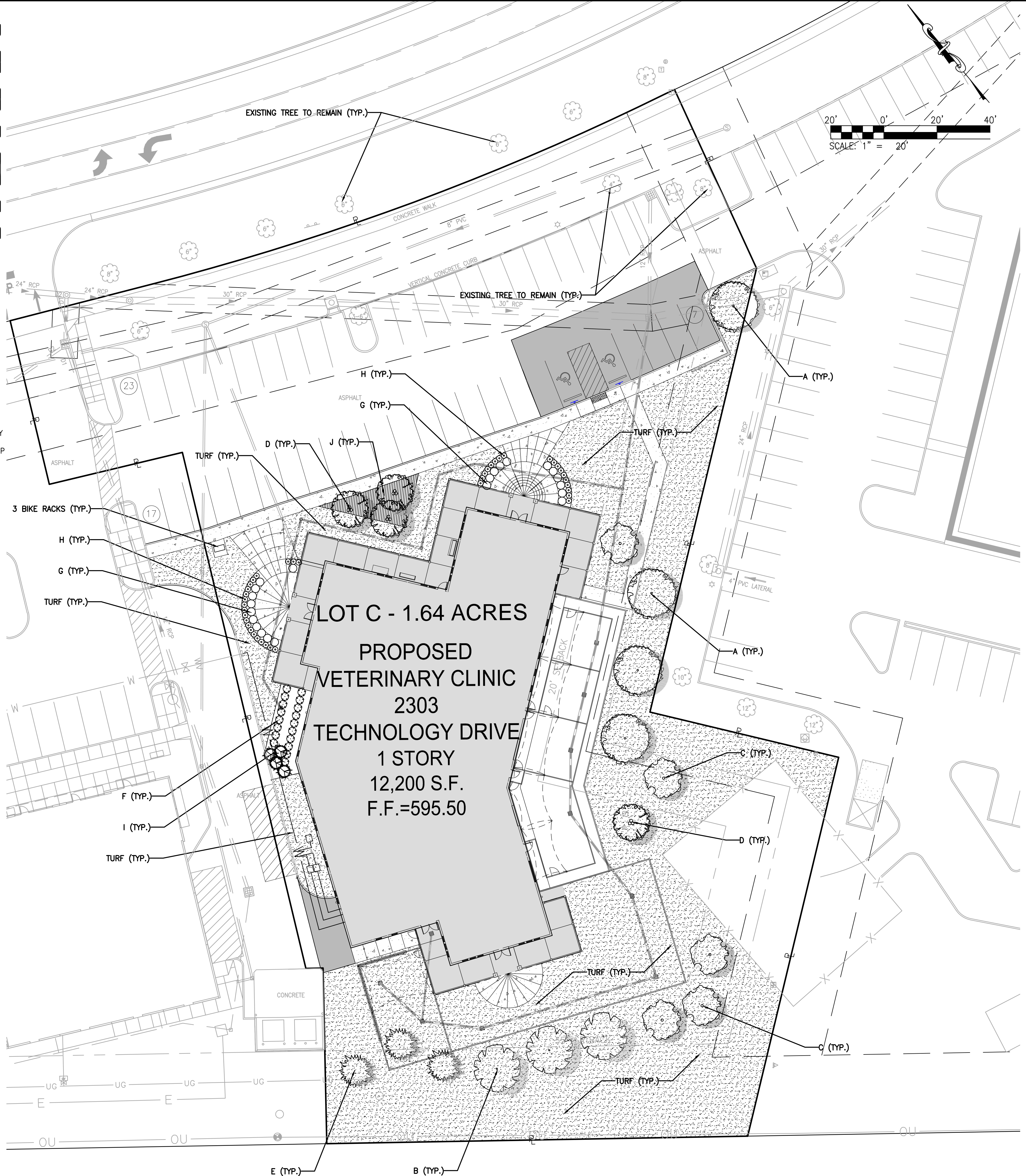
TECHNOLOGY DRIVE - REQUIREMENT	CALCULATIONS - REQUIRED LANDSCAPE	PROPOSED LANDSCAPE
1 TREE FOR EVERY 40' OF STREET FRONTAGE	265.13 / 40 = 7 TREES REQUIRED	7 EXISTING TREES TO REMAIN FRONTAGE
INTERSTATE - REQUIREMENT	CALCULATIONS - REQUIRED LANDSCAPE	PROPOSED LANDSCAPE
1 TREE FOR EVERY 40' OF STREET FRONTAGE	158.19 / 40 = 4 TREES REQUIRED	4 TREES PROPOSED

OPEN SPACE LANDSCAPE

REQUIREMENT	CALCULATIONS - REQUIRED LANDSCAPE	PROPOSED LANDSCAPE
1 TREE FOR EVERY 3,000 S.F. OF OPEN SPACE	34,610 S.F. / 3,000 = 12 TREES	12 TREES

PARKING LOT LANDSCAPE

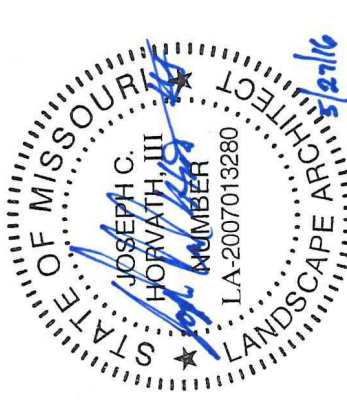
REQUIREMENT	CALCULATIONS - REQUIRED LANDSCAPE	PROPOSED LANDSCAPE
6% OF INTERIOR PARKING LOT SHALL BE LANDSCAPED	47 P.S. x 270 = 12,690 12,690 x 6% = 761.4 S.F. REQUIRED	990.5 S.F. PROPOSED



USER: Kevn; Plot: 110; L10
 DATE: 06/02/2016 10:46:25 AM
 DRAWING: S:\0085\Jobs\2016\16-0083\CADD\C-Plan\PlotSheet\0_IPU\LAND_L10-0083.dwg

NO.	REVISION DESCRIPTION	DATE
1	CITY COMMENTS	07/29/2016

DEVELOPER: M PROPERTY SERVICES LLC
 1001 BOARDWALK SPRINGS PLACE, STE. 10
 O'FALLON, MO 63368
 636-561-9337
 THE PROFESSIONAL WHOSE SIGNATURE AND PERSONAL SEAL APPEAR HEREON ASSUMES RESPONSIBILITY FOR WHAT APPEARS ON THIS PAGE AND DISCLAIMS LIABILITY TO SECTION 327, 411, 412, 413, 414, 415, 416, 417, 418, 419, 420, 421, 422, 423, 424, 425, 426, 427, 428, 429, 430, 431, 432, 433, 434, 435, 436, 437, 438, 439, 440, 441, 442, 443, 444, 445, 446, 447, 448, 449, 450, 451, 452, 453, 454, 455, 456, 457, 458, 459, 460, 461, 462, 463, 464, 465, 466, 467, 468, 469, 470, 471, 472, 473, 474, 475, 476, 477, 478, 479, 480, 481, 482, 483, 484, 485, 486, 487, 488, 489, 490, 491, 492, 493, 494, 495, 496, 497, 498, 499, 500, 501, 502, 503, 504, 505, 506, 507, 508, 509, 510, 511, 512, 513, 514, 515, 516, 517, 518, 519, 520, 521, 522, 523, 524, 525, 526, 527, 528, 529, 530, 531, 532, 533, 534, 535, 536, 537, 538, 539, 540, 541, 542, 543, 544, 545, 546, 547, 548, 549, 550, 551, 552, 553, 554, 555, 556, 557, 558, 559, 560, 561, 562, 563, 564, 565, 566, 567, 568, 569, 570, 571, 572, 573, 574, 575, 576, 577, 578, 579, 580, 581, 582, 583, 584, 585, 586, 587, 588, 589, 590, 591, 592, 593, 594, 595, 596, 597, 598, 599, 600, 601, 602, 603, 604, 605, 606, 607, 608, 609, 610, 611, 612, 613, 614, 615, 616, 617, 618, 619, 620, 621, 622, 623, 624, 625, 626, 627, 628, 629, 630, 631, 632, 633, 634, 635, 636, 637, 638, 639, 640, 641, 642, 643, 644, 645, 646, 647, 648, 649, 650, 651, 652, 653, 654, 655, 656, 657, 658, 659, 660, 661, 662, 663, 664, 665, 666, 667, 668, 669, 670, 671, 672, 673, 674, 675, 676, 677, 678, 679, 680, 681, 682, 683, 684, 685, 686, 687, 688, 689, 690, 691, 692, 693, 694, 695, 696, 697, 698, 699, 700, 701, 702, 703, 704, 705, 706, 707, 708, 709, 710, 711, 712, 713, 714, 715, 716, 717, 718, 719, 720, 721, 722, 723, 724, 725, 726, 727, 728, 729, 730, 731, 732, 733, 734, 735, 736, 737, 738, 739, 740, 741, 742, 743, 744, 745, 746, 747, 748, 749, 750, 751, 752, 753, 754, 755, 756, 757, 758, 759, 760, 761, 762, 763, 764, 765, 766, 767, 768, 769, 770, 771, 772, 773, 774, 775, 776, 777, 778, 779, 780, 781, 782, 783, 784, 785, 786, 787, 788, 789, 790, 791, 792, 793, 794, 795, 796, 797, 798, 799, 800, 801, 802, 803, 804, 805, 806, 807, 808, 809, 810, 811, 812, 813, 814, 815, 816, 817, 818, 819, 820, 821, 822, 823, 824, 825, 826, 827, 828, 829, 830, 831, 832, 833, 834, 835, 836, 837, 838, 839, 840, 841, 842, 843, 844, 845, 846, 847, 848, 849, 850, 851, 852, 853, 854, 855, 856, 857, 858, 859, 860, 861, 862, 863, 864, 865, 866, 867, 868, 869, 870, 871, 872, 873, 874, 875, 876, 877, 878, 879, 880, 881, 882, 883, 884, 885, 886, 887, 888, 889, 890, 891, 892, 893, 894, 895, 896, 897, 898, 899, 900, 901, 902, 903, 904, 905, 906, 907, 908, 909, 910, 911, 912, 913, 914, 915, 916, 917, 918, 919, 920, 921, 922, 923, 924, 925, 926, 927, 928, 929, 930, 931, 932, 933, 934, 935, 936, 937, 938, 939, 940, 941, 942, 943, 944, 945, 946, 947, 948, 949, 950, 951, 952, 953, 954, 955, 956, 957, 958, 959, 960, 961, 962, 963, 964, 965, 966, 967, 968, 969, 970, 971, 972, 973, 974, 975, 976, 977, 978, 979, 980, 981, 982, 983, 984, 985, 986, 987, 988, 989, 990, 991, 992, 993, 994, 995, 996, 997, 998, 999, 1000.



SHOPPES AT WINGHAVEN
 THE PET DOCTOR/YUPPY PUPPY
 TECHNOLOGY DRIVE
 O'FALLON, MO 63368
LANDSCAPE PLAN

cole
 CIVIL ENGINEERING / SURVEYING / PLANNING / LANDSCAPE ARCHITECTURE
 401 S. 18th Street
 Suite 200
 O'Fallon, MO 63368
 314.984.9887 fax
www.colellc.com

DESIGN/CALC BY	JCH
DRAWN BY	JCH
CHECKED BY	JCH/JDR
DRAWING SCALE	AS SHOWN
DATE	06/02/2016
Job Number	16-0063
Sheet Number	L1.0