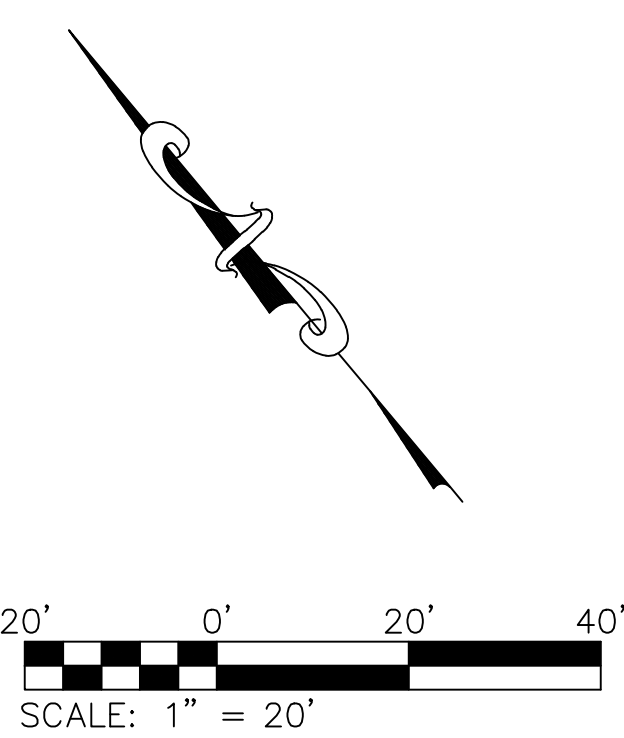
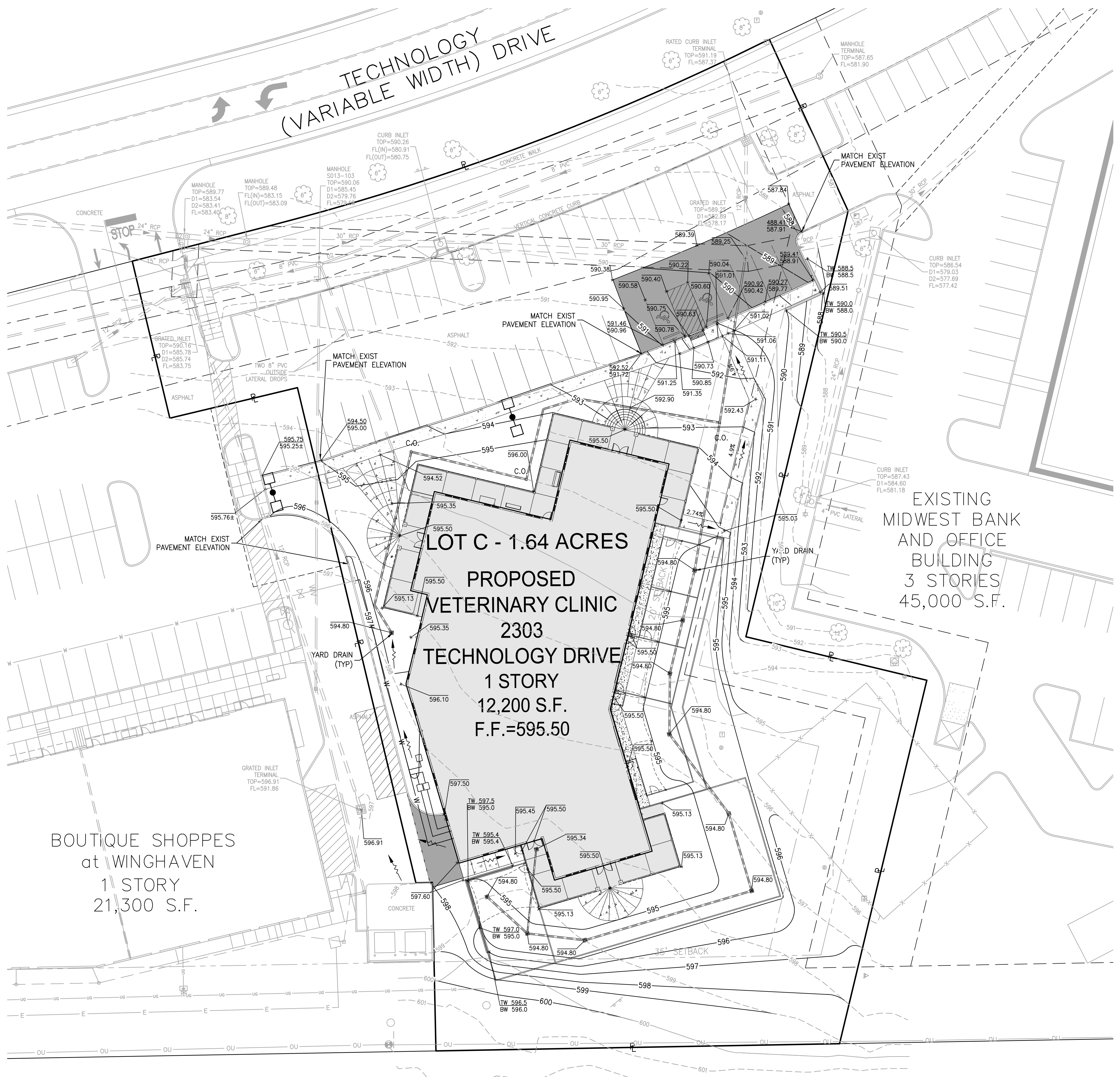


USER: Kevin Oberknecht TAB: GRADE_1
 DATE: July 19, 2016 - 10:44:03 AM
 DRAWING: S:\JOBS\16022016\16-0063\CADD\C-Plan\PlanSheets\0_Plan_Grading_01-0003.dwg

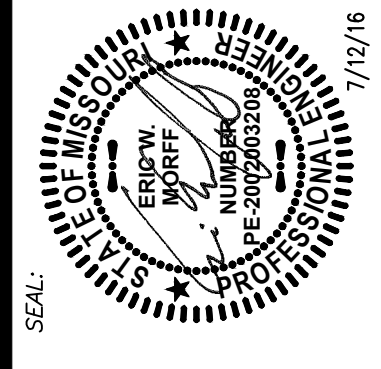


NOTE:
 1. THE SIDEWALK FROM THE ADA PARKING SPOTS WILL NEED TO REMAIN UNDER 5%, IF THIS RUNNING SLOPE EXCEEDS 5%, THEN THE SIDEWALK BECOMES A RAMP AND THERE WILL NEED TO BE A 5X5 LANDING FOR EVERY 2.5' OF VERTICAL RISE.

NO	REVISION DESCRIPTION	DATE
1	CITY COMMENTS	07/19/2016

DEVELOPER/OWNER:
M PROPERTY SERVICES, LLC
 1001 BOARDWALK SPRINGS PLACE, STE. 10
 OFALLON, MO 63368
 636-961-9337

THE PROFESSIONAL WHOSE SIGNATURE AND PERSONAL SEAL APPEAR HEREON ASSUMES RESPONSIBILITY FOR THE ACCURACY OF THE DATA AND THE DESIGN, SPECIFICATIONS, ESTIMATES, REPORTS, OR OTHER DOCUMENTS OF INSTRUMENTS NOT SEALLED BY THE ENGINEER OR ARCHITECT. THE PROFESSIONAL SHALL NOT BE HELD RESPONSIBLE FOR THE ACCURACY OF THE DATA OR THE DESIGN, SPECIFICATIONS, ESTIMATES, REPORTS, OR OTHER DOCUMENTS OF INSTRUMENTS NOT SEALLED BY THE PROFESSIONAL TO WHOM THEY ARE REFERRED.



SHOPPES AT WINGHAVEN
 THE PET DOCTOR/YUPPY PUPPY
 TECHNOLOGY DRIVE
 OFALLON, MO 63368

GRADING PLAN

+ ST. LOUIS
 401 S. 16th Street
 St. Louis, MO 63103
 314.984.9887 ext/
 www.colestl.com

COLE
 CIVIL ENGINEERING / SURVEYING / PLANNING / LANDSCAPE ARCHITECTURE

DESIGN/CALC BY	BSJ
DRAWN BY	RJG
CHECKED BY	EM
DRAWING SCALE	NOT TO SCALE
DATE	06/02/2016
Job Number	16-0063
Sheet Number	C5.0