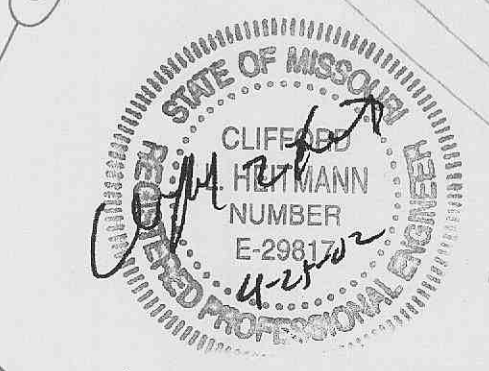
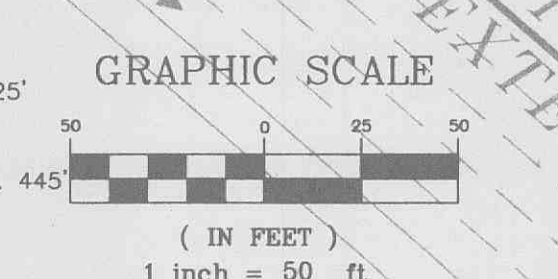


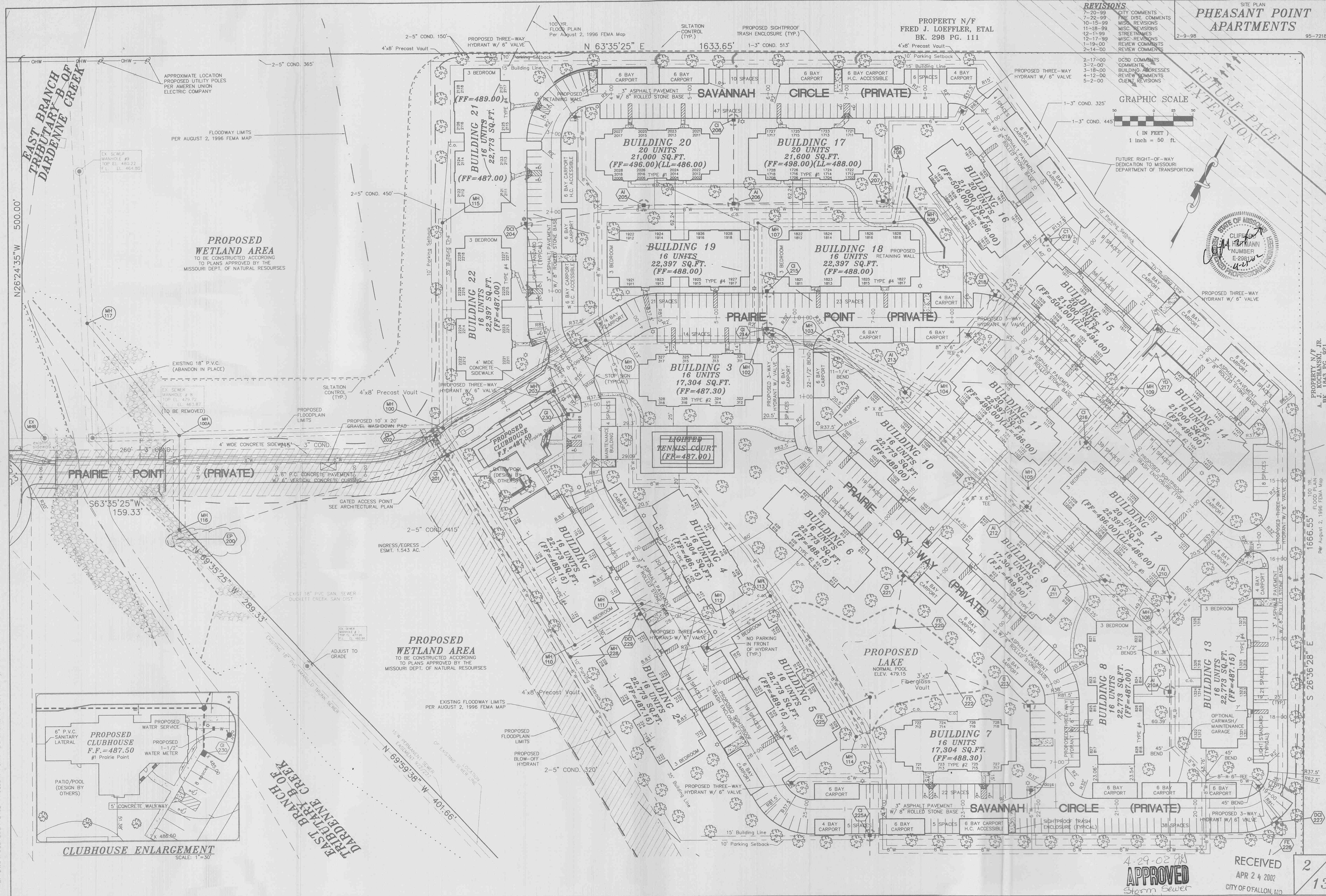
**PHEASANT POINT APARTMENTS**

**REVISIONS**

7-20-99	CITY COMMENTS
7-22-99	FIRE DIST. COMMENTS
10-15-99	MISC. REVISIONS
11-18-99	MISC. REVISIONS
12-1-99	STREET NAMES
12-17-99	MISC. REVISIONS
1-19-00	REVIEW COMMENTS
2-14-00	REVIEW COMMENTS
2-17-00	DCSD COMMENTS
3-7-00	COMMENTS
3-18-00	BUILDING ADDRESSES
4-12-00	REVIEW COMMENTS
5-2-00	CLIENT REVISIONS

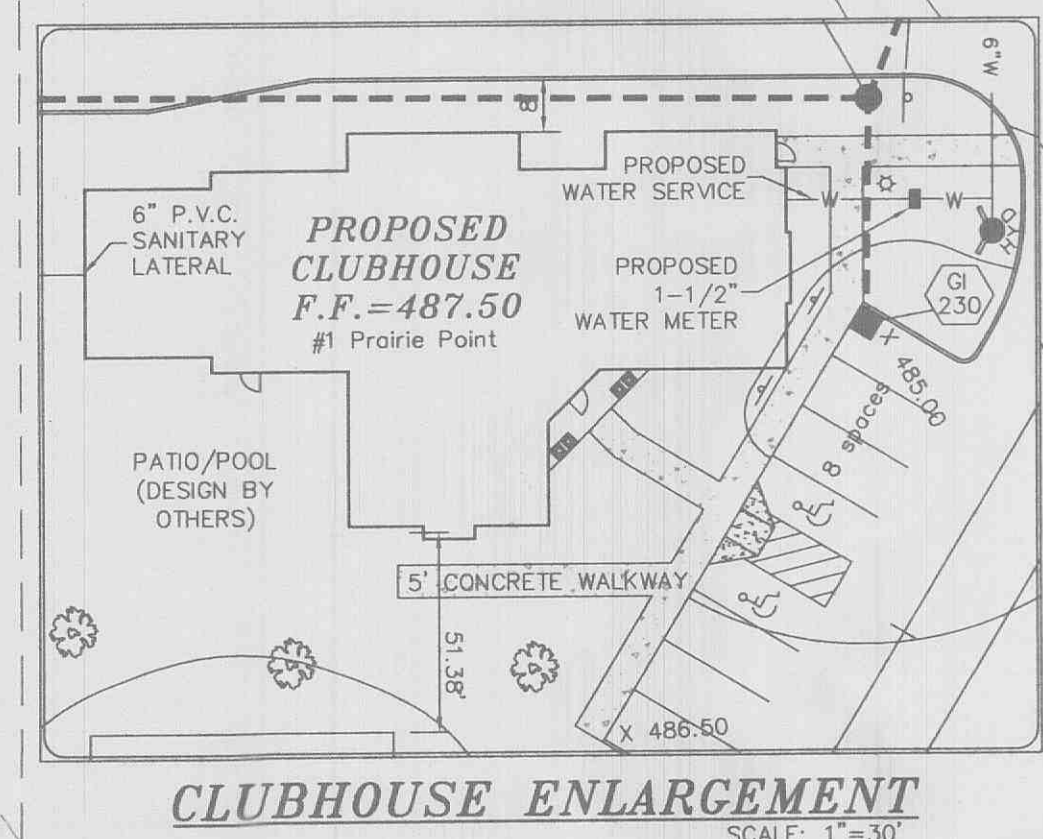


PROPERTY N/F  
FRED J. LOEFFLER, ETAL  
BK. 298 PG. 111



**PROPOSED WETLAND AREA**  
TO BE CONSTRUCTED ACCORDING  
TO PLANS APPROVED BY THE  
MISSOURI DEPT. OF NATURAL RESOURCES

**PROPOSED WETLAND AREA**  
TO BE CONSTRUCTED ACCORDING  
TO PLANS APPROVED BY THE  
MISSOURI DEPT. OF NATURAL RESOURCES



**CLUBHOUSE ENLARGEMENT**  
SCALE: 1" = 30'

4-29-02 JH  
**APPROVED**  
Storm Sewer  
Revision

RECEIVED  
APR 24 2002  
CITY OF FALLON, MO

2  
13

Sile

E:\DWG\7000PLUS\7219E-Pheasant Point Apartments\7219E.dwg, 04/22/02 09:01:24 PM, 59.28

PROPERTY N/F JR.  
A. J. KOCHANSKI, JR.  
BK. 1645 PG. 921