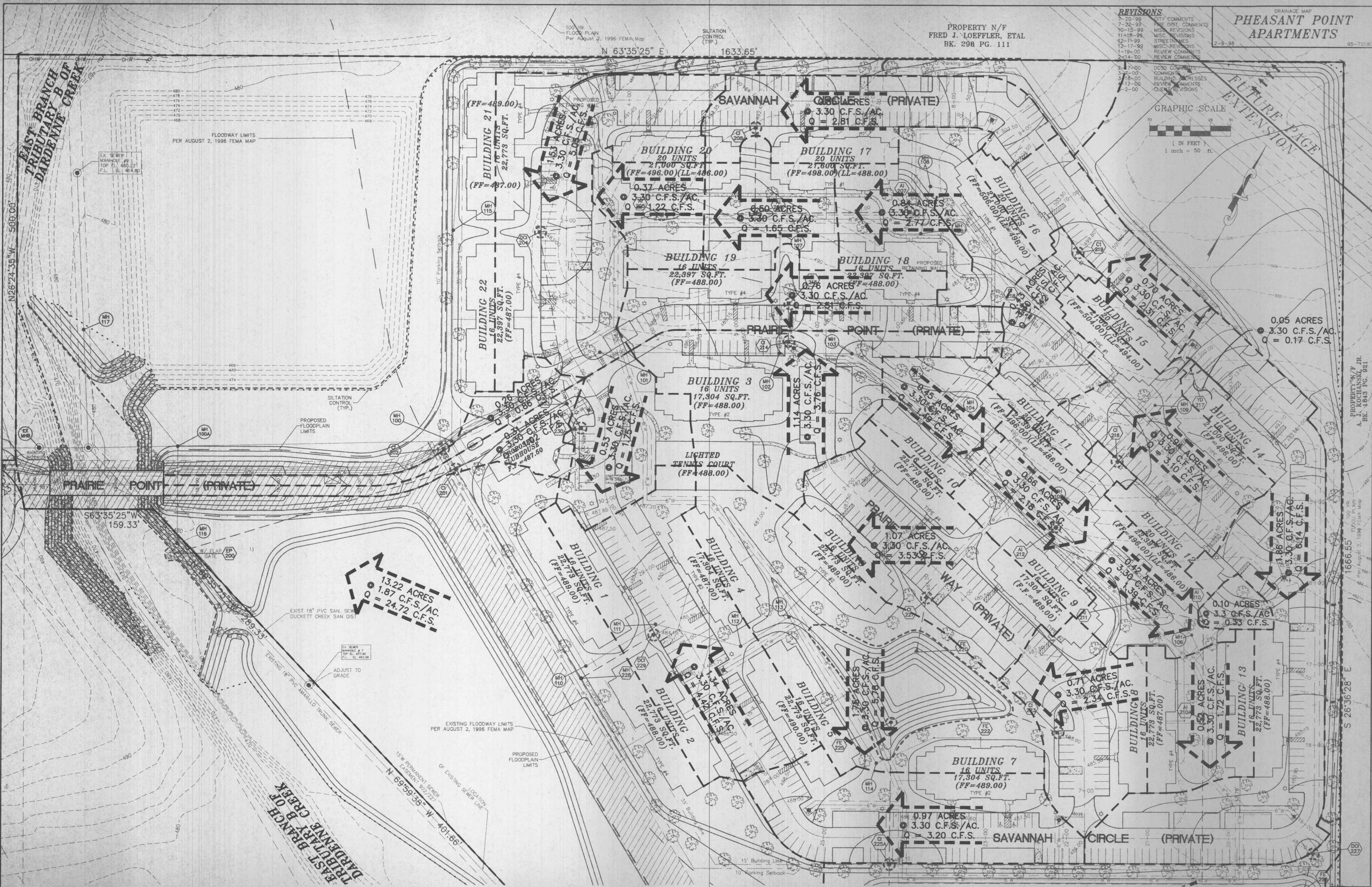
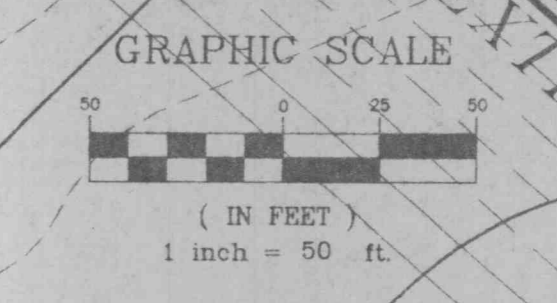


PHEASANT POINT APARTMENTS

PROPERTY N/F
FRED J. LOEFFLER, ETAL
BK. 298 PG. 111

REVISIONS

| | |
|----------|----------------------|
| 7-20-99 | CITY COMMENTS |
| 7-22-99 | FIRE DIST. COMMENTS |
| 10-15-99 | MISC. REVISIONS |
| 11-18-99 | MISC. REVISIONS |
| 12-1-99 | STREET NAMES |
| 12-17-99 | MISC. REVISIONS |
| 1-19-00 | REVIEW COMMENTS |
| 2-14-00 | REVIEW COMMENTS |
| 2-17-00 | DCSO COMMENTS |
| 3-22-00 | COMMENTS |
| 3-18-00 | BUILDING ADJUSTMENTS |
| 12-00 | REVIEW COMMENTS |
| 7-00 | CLIENT REVISIONS |



E:\DWG\700RPLUS\7218econ.dwg Tue May 02 09:37:17 2000 STATION 11 SCOTT L.

PROPERTY N/F
A. J. KOCHANSKI, JR.
BK. 1843 PG. 921

100' FLOOD PLAN
Per August 2, 1996 FEMA Map

100' FLOOD PLAN
Per August 2, 1996 FEMA Map

100' FLOOD PLAN
Per August 2, 1996 FEMA Map