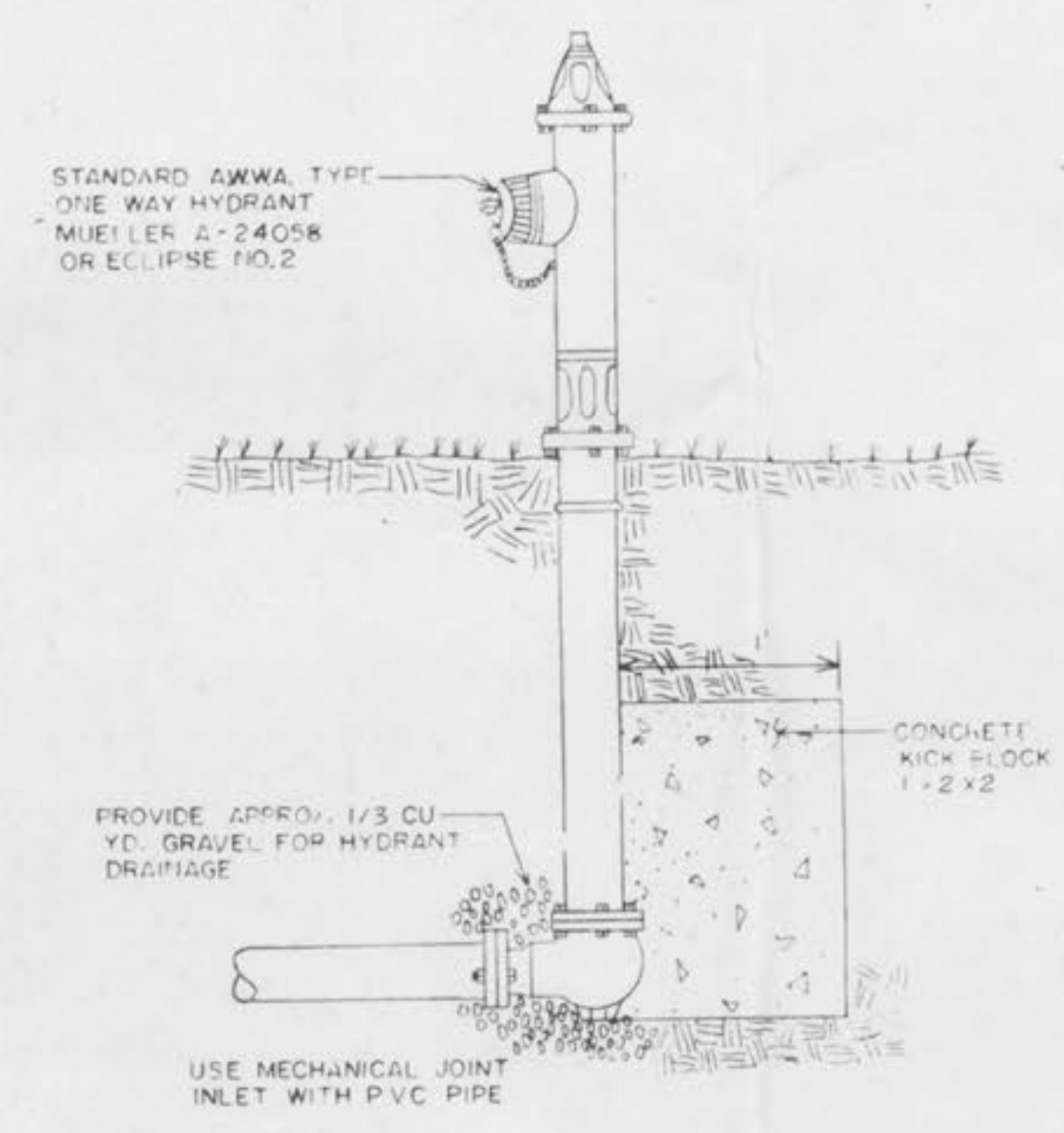
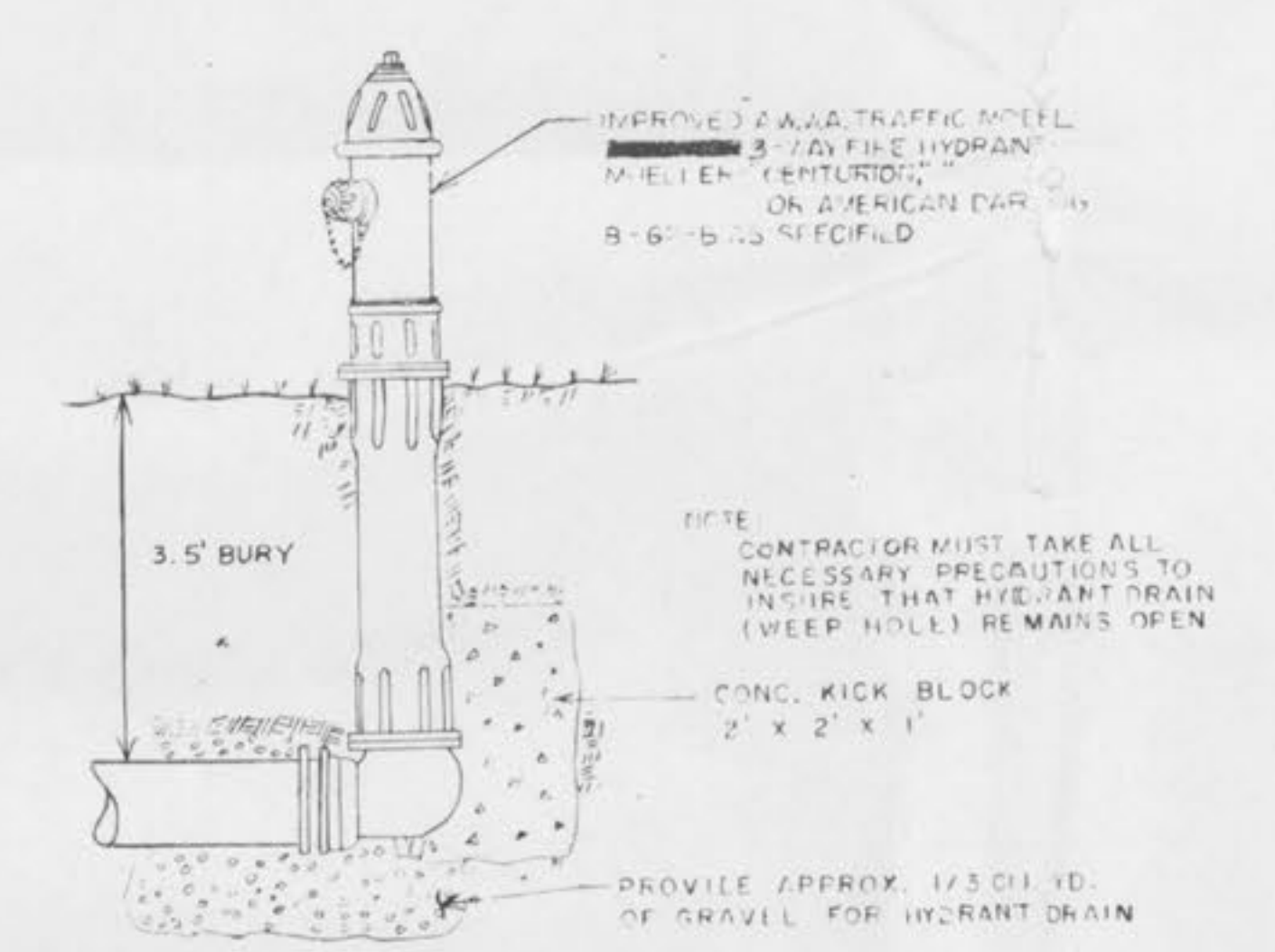


**GATE VALVE W / THRUST BLOCK DETAIL**  
 NO SCALE

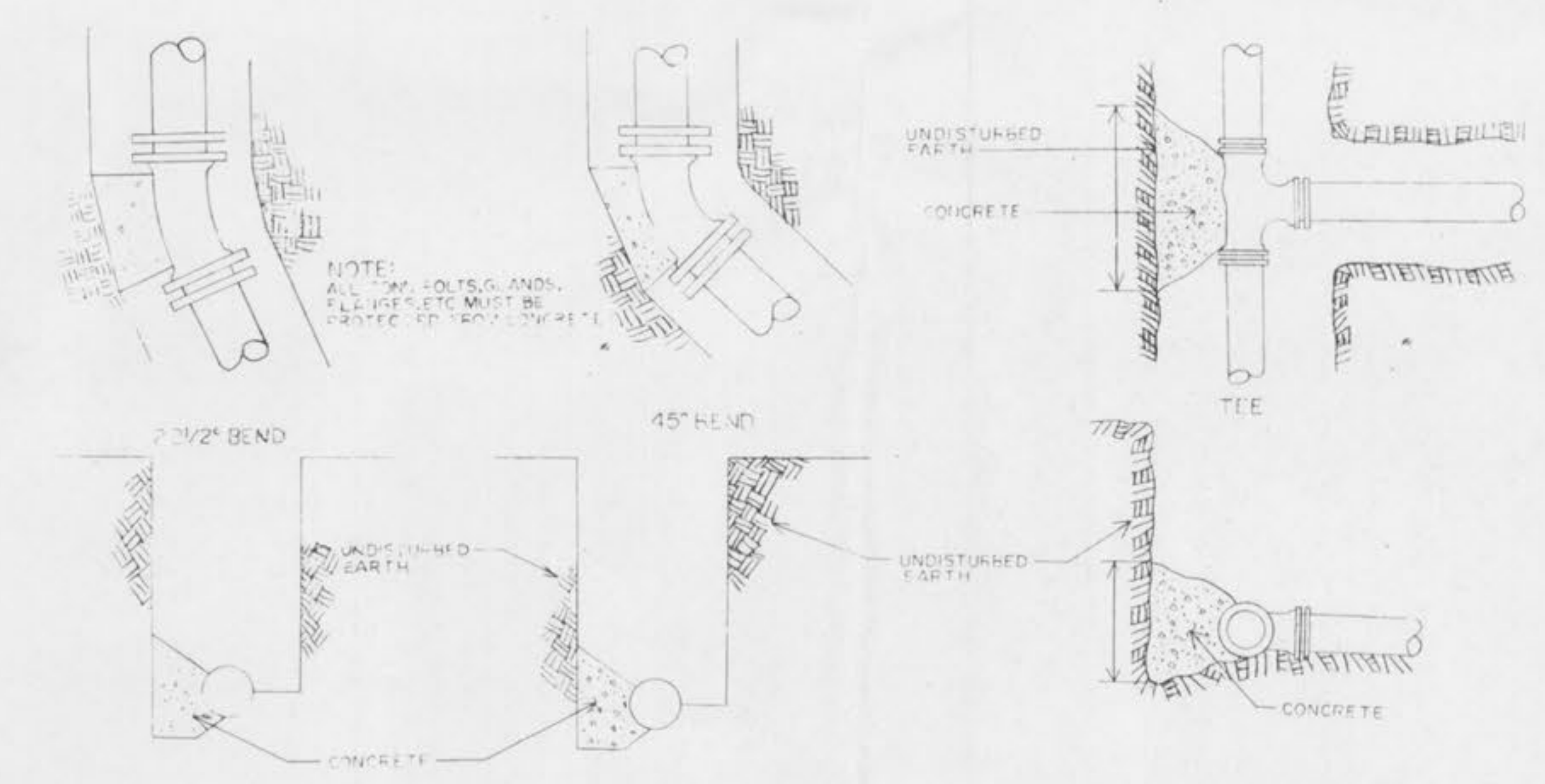
**TYPICAL WATER MAIN INSTALLATION DETAILS**  
 NO SCALE



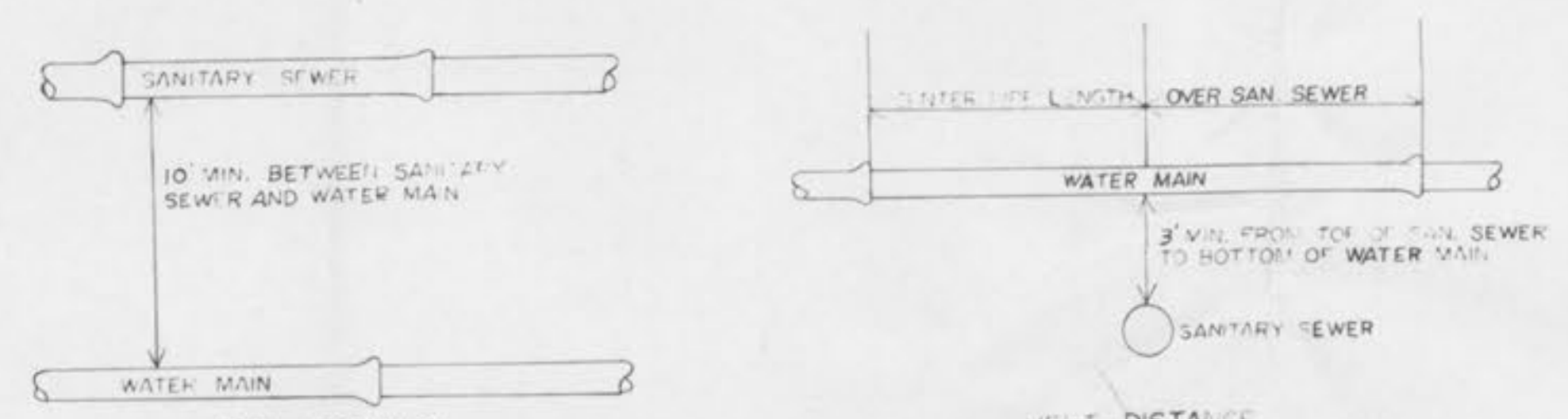
**FLUSHING HYDRANT**  
 NO SCALE



**FIRE HYDRANT INSTALLATION DETAIL**  
 NO SCALE



**TYPICAL THRUST BLOCK DETAIL**  
 NO SCALE



**TYPICAL WATER & SEWER SEPARATION**  
 NO SCALE

WATER MAIN SIZE (D. IN INCHES)	MINI THRUST BLOCK BEARING DIMENSIONS TO BEAR AGAINST UNDISTURBED EARTH				
	45° BEND	22 1/2° BEND	TEE	VALVE	CROSS
2"	.5x1'	.5x1'	.5x1'	.5x1'	.5x1'
4"	1x1'	1'x1'	2'x1'	2'x1'	1'x1'
6"	1.5x1'	1'x1'	2'x1'	2'x1'	1'x1'
8"	2'x1'	1'x1'	2'x2.5'	2'x2'	1'x1.5'
10"	2'x2.5'	1.5x2'	2'x3.5'	2'x3'	2'x2'
12"	2'x3.5'	1.5x2.5'	3'x3.5'	3'x3'	2'x3'
16"	3'x4'	2'x3'	4'x4.5'	3'x4.5'	3'x3.5'

ST. CHARLES COUNTY  
 PUBLIC WATER SUPPLY DISTRICT  
 NO. 2

Prepared from: COCHRAN ENGINEERING COMPANY  
 Drawing by: WASHINGTON, DISTRICT OF COLUMBIA

APPROVED:

**TYPICAL WATER INSTALLATION DETAILS**

DATE: FEB. 88 SCALE: AS SHOWN SHEET NO. REVISIONS:

**ENGINEERING**

PLANNING SURVEYING

1652 South Cloverleaf Drive  
 St. Charles, MO. 63376  
 314-928-5502 FAX 928-3718

DATE: \_\_\_\_\_ REVISIONS: \_\_\_\_\_

PROJECT NUMBER: \_\_\_\_\_

10 of 10  
 SHEET