

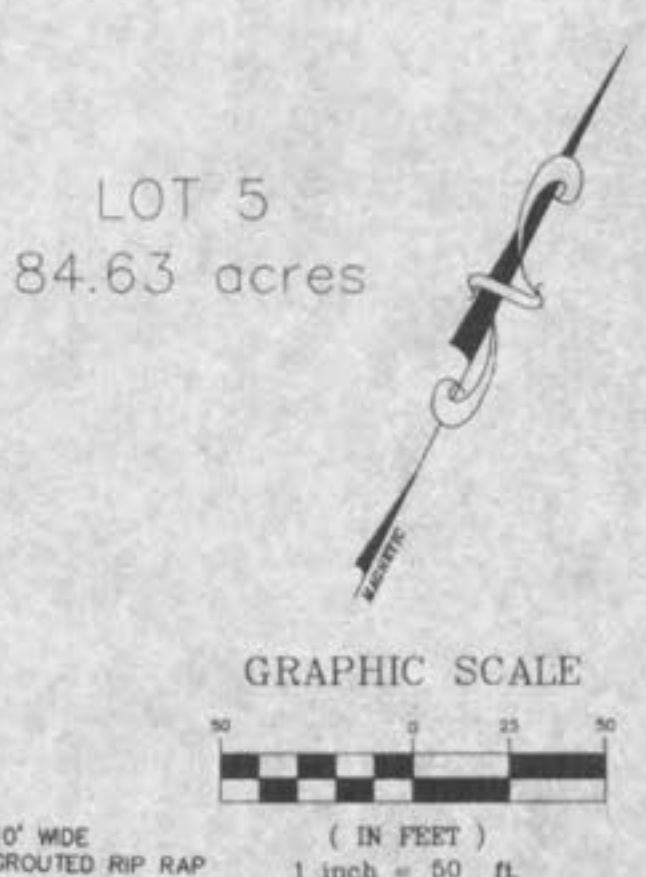
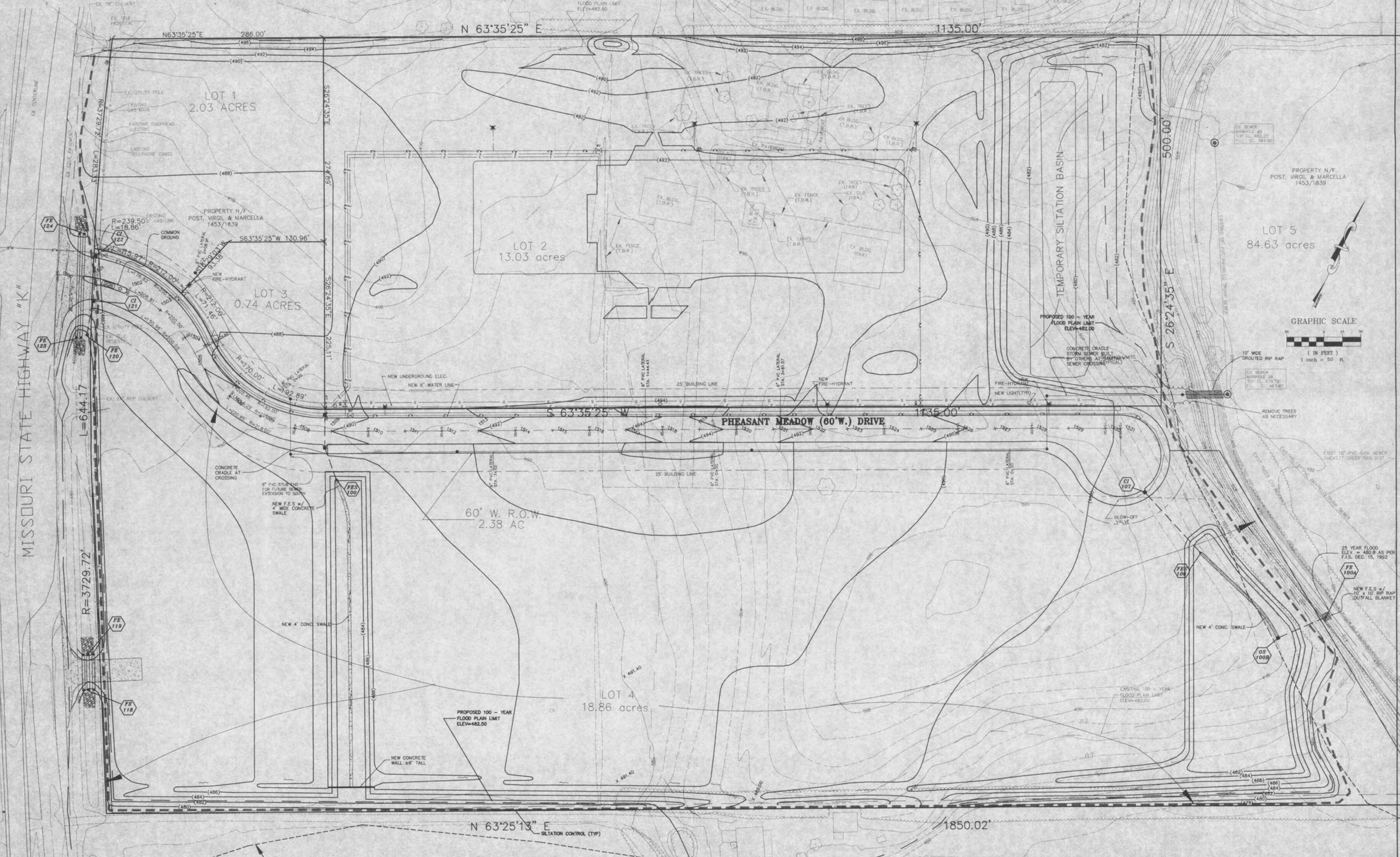
GRADING PLAN  
PHEASANT POINT CENTER

12-15-97 95-7218

EXISTING 100 - YEAR FLOODWAY LIMIT ELEV=482.00	01-21-98 REVISIONS	DUCKETT CREEK COMMENTS
	2-19-98 REVISIONS	
	03-06-98 COMMENTS	
	3-23-98 REVISIONS	
	4-08-98 O'FALLON COMMENTS	
	4-15-98 REVISIONS	

PROP N/F PAUL & FRED LOEFFLER BK 302 PG 469

THE VILLAGES OF PHEASANT POINT VILLAGES 2A & 5A PB 25 PG 42



MISSOURI STATE HIGHWAY "K"

60' W. R.O.W. 2.38 AC

PHEASANT MEADOW (60' W.) DRIVE

TEMPORARY SILTATION BASIN

FLOODWAY

<p><b>B&amp;B ENGINEERING</b> PLANNING SURVEYING</p>	12-15-97	REVISIONS
	96-7218	
	3 OF 10	SHEET

1995 South Commercial St. St. Louis, MO 63104  
PHONE 336-5852  
FAX 336-1718

C:\OS2\17\DATA\2182001.dwg Wed Apr 15 16:09:56 1998 Station 11.50