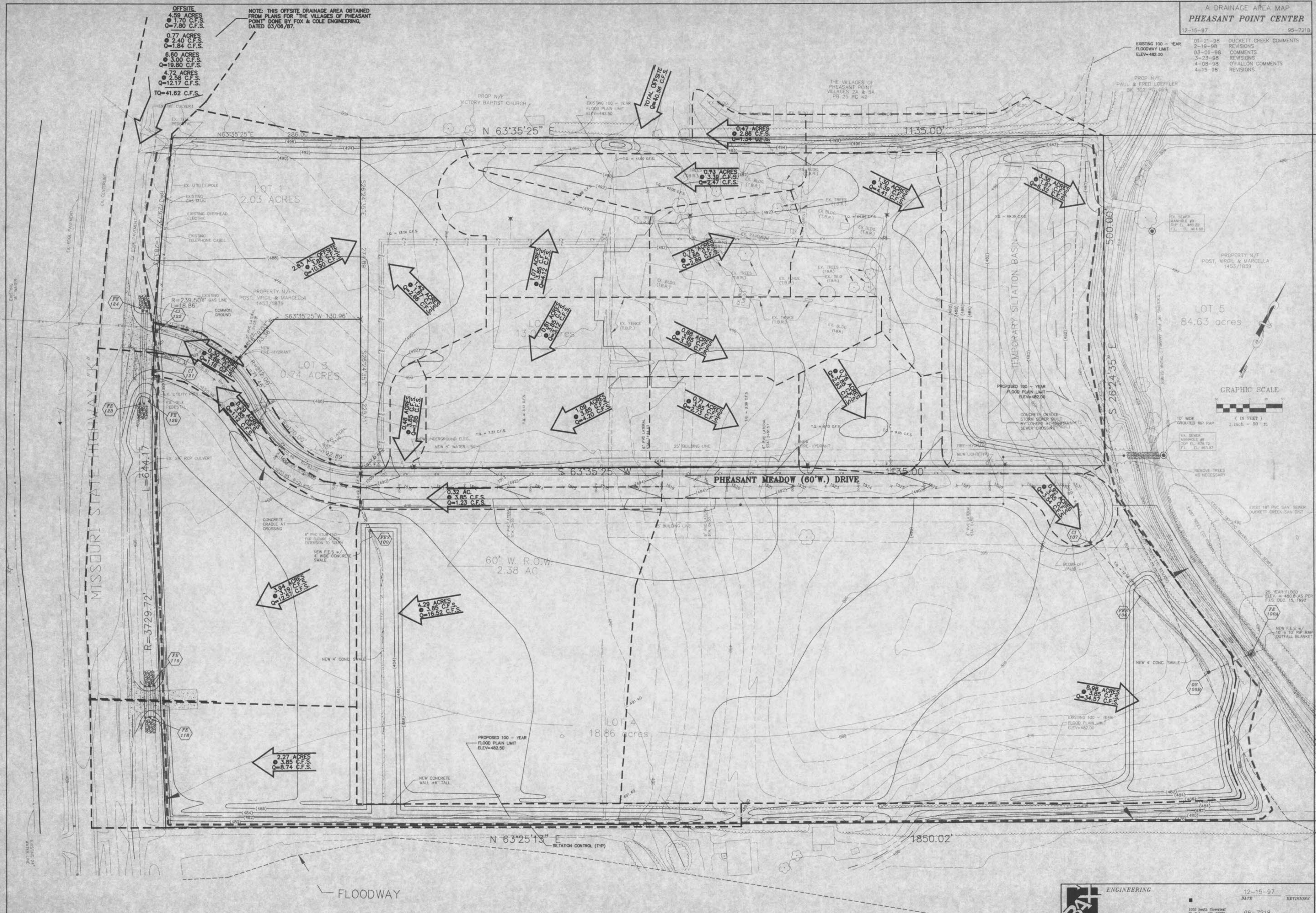


EXISTING 100 - YEAR FLOODWAY LIMIT ELEV=482.00	DATE	REVISIONS
	01-21-98	DUCKETT CREEK COMMENTS
	2-19-98	REVISIONS
	03-06-98	COMMENTS
	3-23-98	REVISIONS
	4-08-98	OF ALL ON COMMENTS
	4-15-98	REVISIONS

OFFSITE
4.59 ACRES
Q=1.70 C.F.S.
Q=7.80 C.F.S.
0.77 ACRES
Q=2.40 C.F.S.
Q=1.84 C.F.S.
6.60 ACRES
Q=3.00 C.F.S.
Q=19.80 C.F.S.
4.72 ACRES
Q=2.38 C.F.S.
Q=12.17 C.F.S.
TO=41.62 C.F.S.

NOTE: THIS OFFSITE DRAINAGE AREA OBTAINED FROM PLANS FOR THE VILLAGES OF PHEASANT POINT DONE BY FOX & COLE ENGINEERING, DATED 03/06/87.



THIS SHEET FOR DRAINAGE AREA PURPOSES ONLY, NOT FOR CONSTRUCTION

	ENGINEERING	12-15-97	DATE	REVISIONS
	PLANNING	95-7218	PROJECT NUMBER	
	SURVEYING	4 OF 10	SHEET	

1555 South Glenhurst
St. Louis, MO 63117
PHONE 635-5465
FAX 635-1719

C:\3054\9501\7218\2001.dwg 10/15/97 15:46:00 20 1386 4184106 11 32011