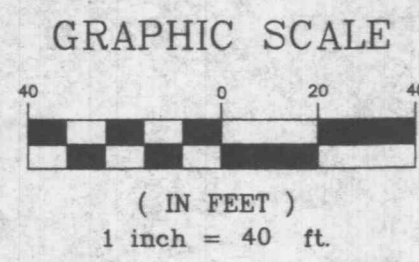


A SITE PLAN FOR PHEASANT POINT ELEMENTARY SCHOOL ADDITION

A TRACT OF LAND IN FRACTIONAL
SECTION 16, U.S. SURVEY 1696
TOWNSHIP 46 NORTH, RANGE 3 EAST
OF THE FIFTH PRINCIPAL MERIDIAN,
ST. CHARLES COUNTY, MISSOURI



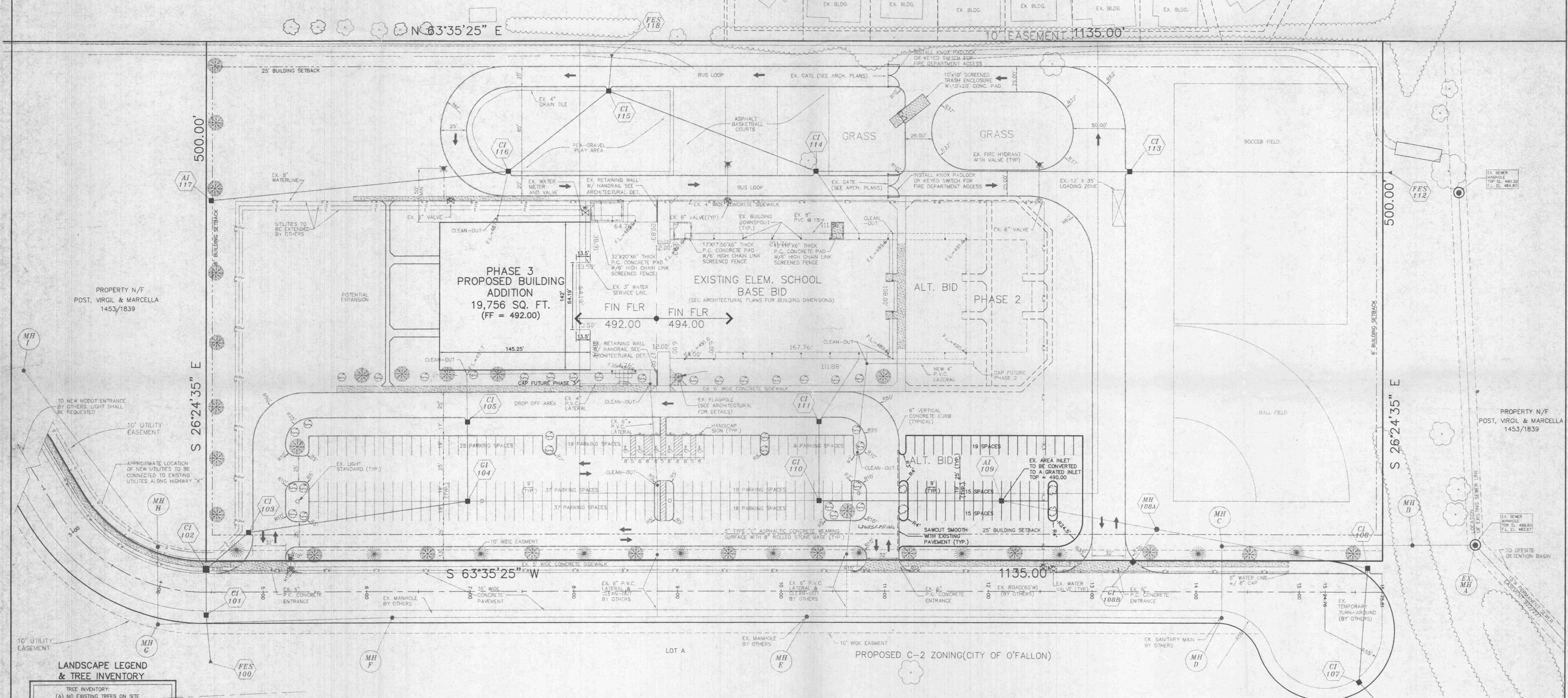
R-1 SINGLE FAMILY RESIDENTIAL (CITY OF O'FALLON)

PROP N/F
VICTORY BAPTIST CHURCH

THE VILLAGES OF
PHEASANT POINT
VILLAGES 2A & 5A
PB 25 PG 42

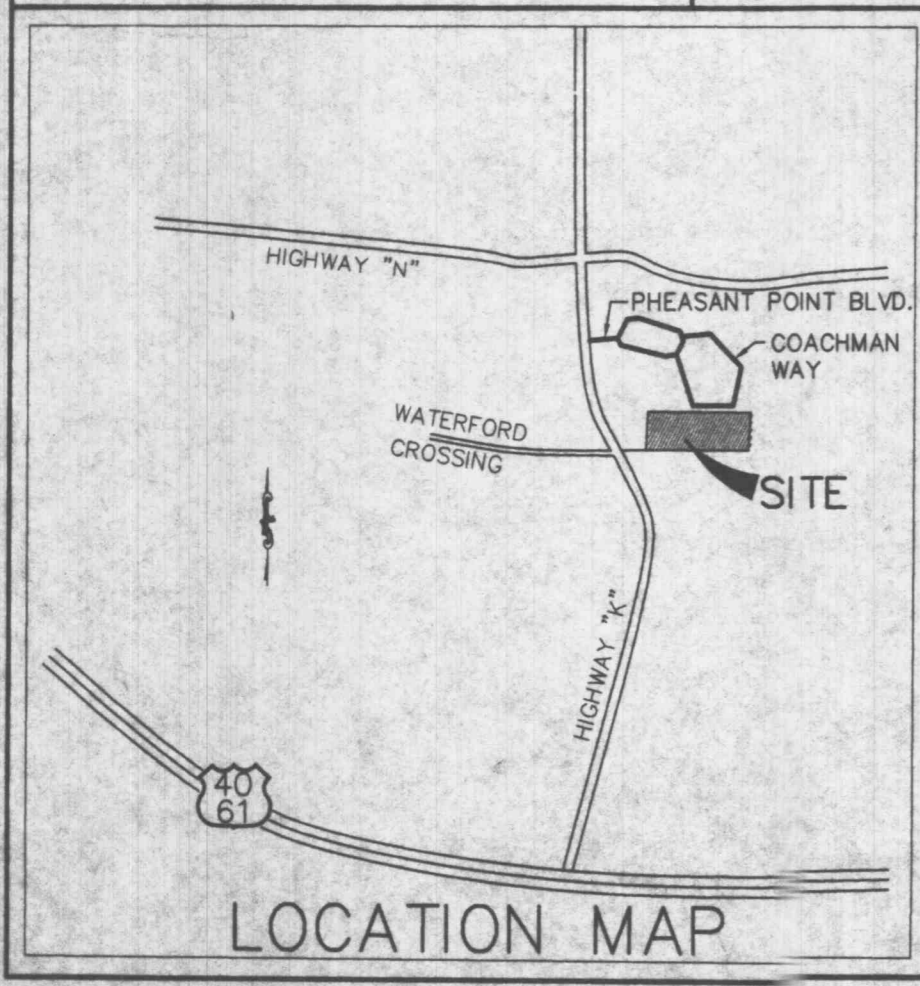
PROP N/F
PAUL & FRED LOEFFLER
BK 302 PG 469

ZONED R-1A (ST. CHARLES COUNTY)



LANDSCAPE LEGEND & TREE INVENTORY

- TREE INVENTORY:
(A) NO EXISTING TREES ON SITE
(B) 35 NEW TREES PROVIDED
-ELEVEN (11) GLAUCUA JUNIPER
-TWENTYTHREE (23)-2" CALIPER RED MAPLE
-THIRTYONE (31)-18" CHINA GIRL HOLLY



DMA Design
A Division of The DMA Corporation
architects engineers construction managers
2299 South Spodee Rd. Warrenton, Missouri 63383

ISSUED FOR:
80% OWNERS REVIEW
JANUARY 11, 1999

REVISIONS:

Proj. No. 98-0624

C-2

BFA
ENGINEERING
PLANNING
SURVEYING

1002 South Cloverleaf Drive
St. Peters, MO. 63376-8445
314-928-5552
FAX 928-1718

Copyright © 1997
The Engineering Company, Inc.
All Rights Reserved