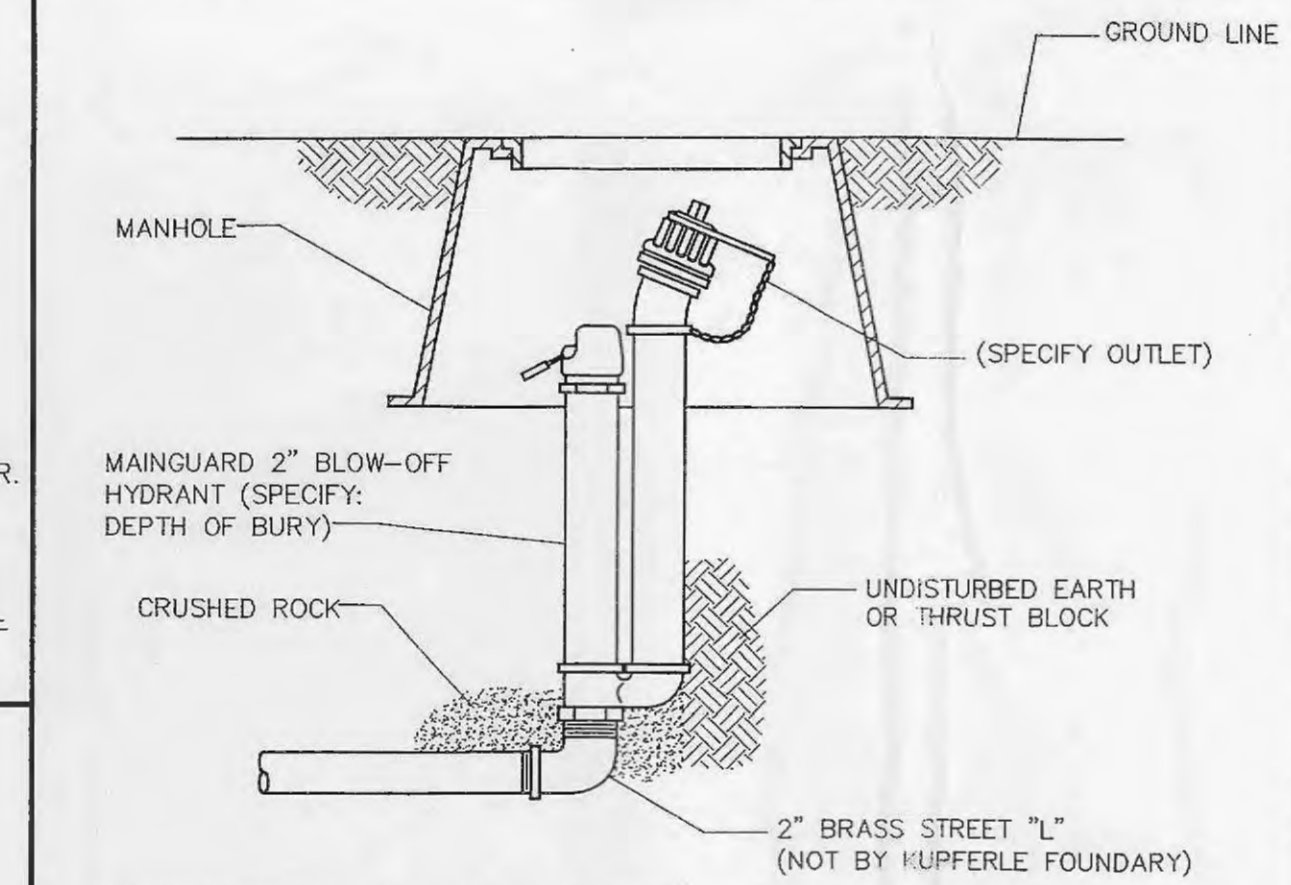
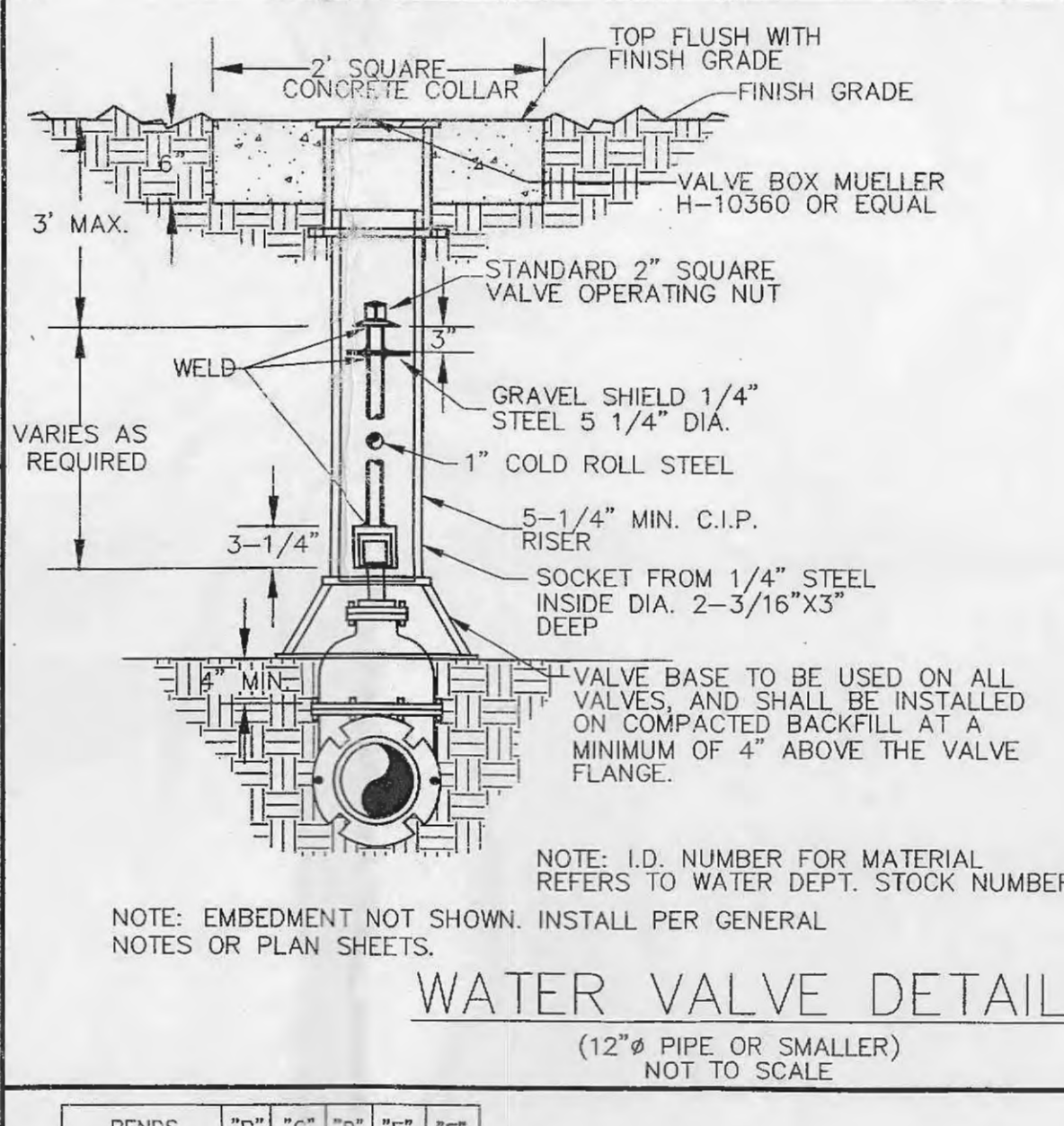
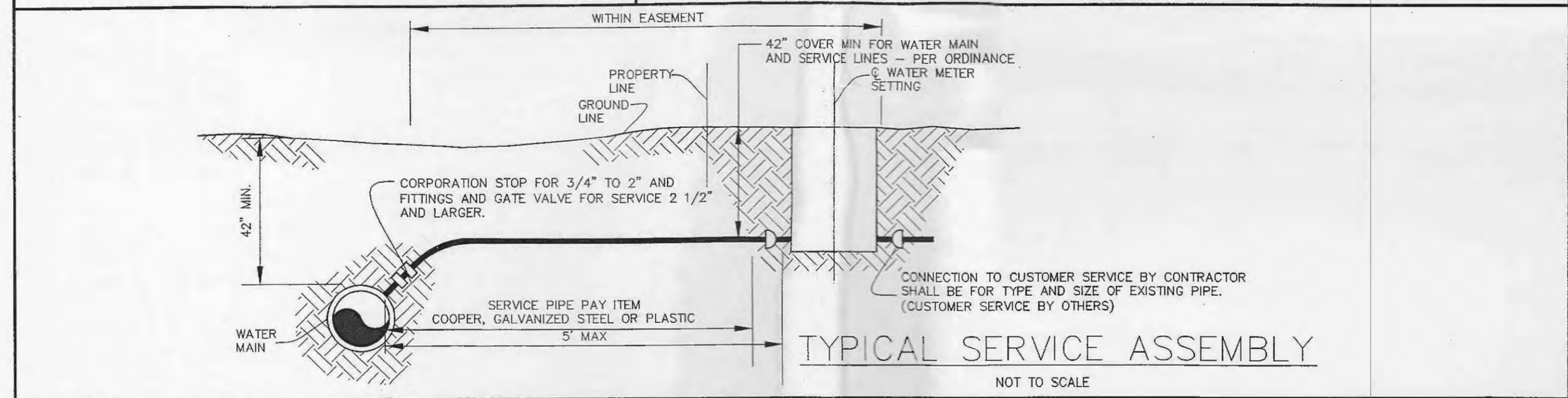
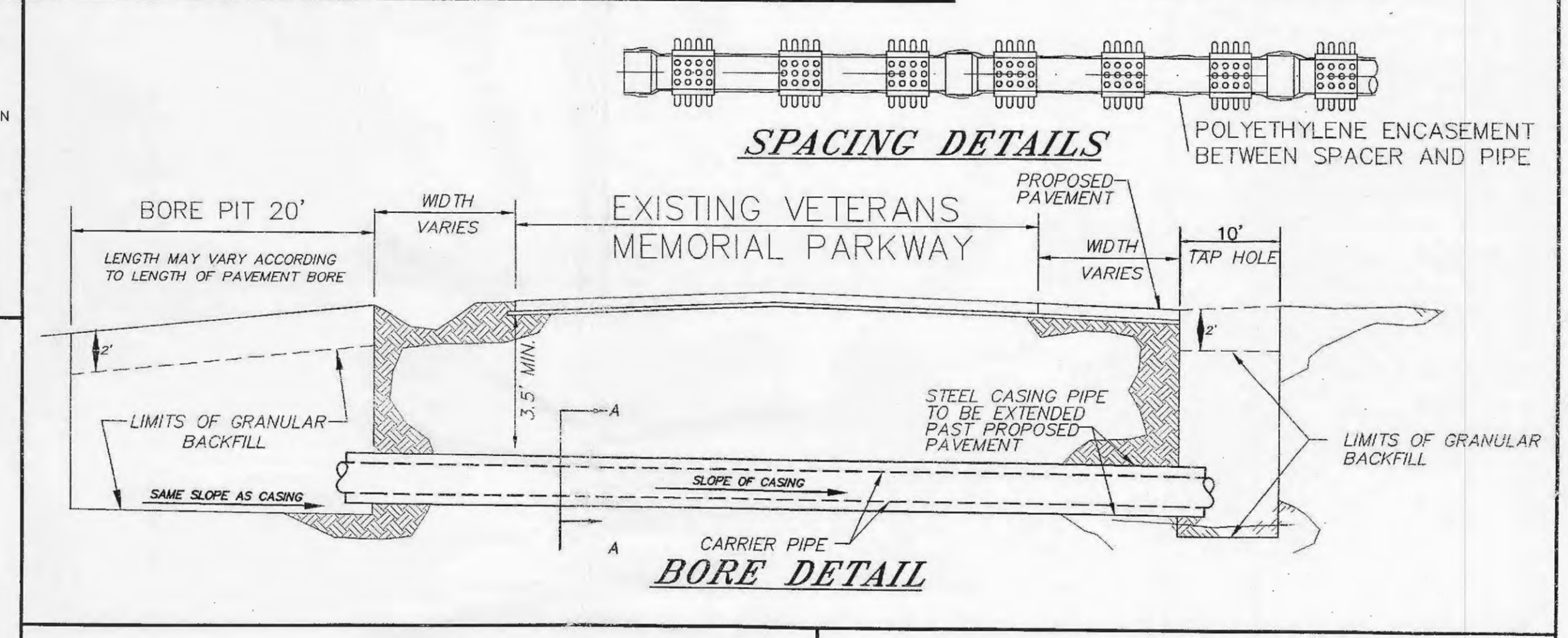
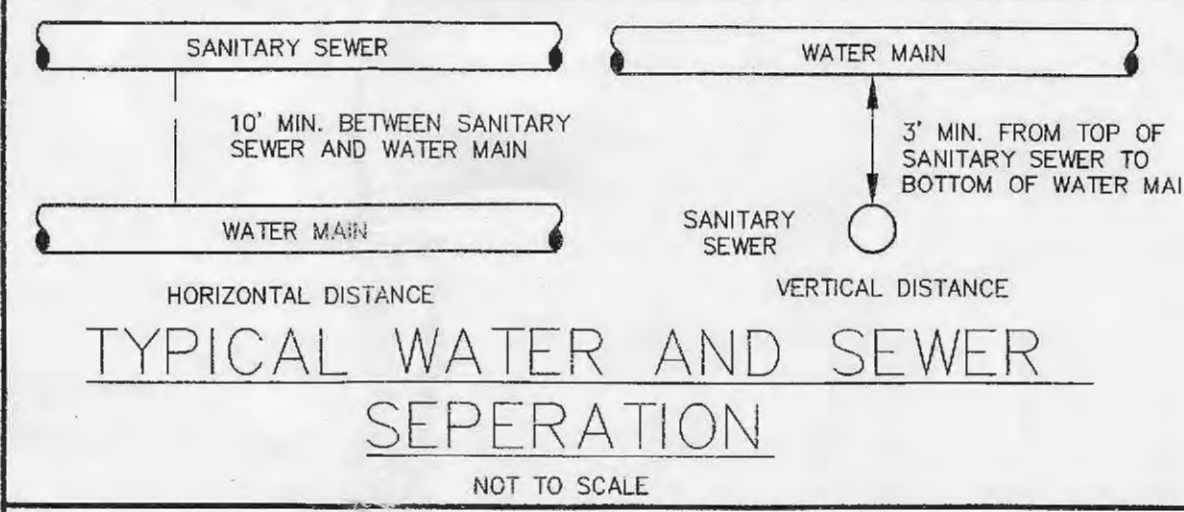
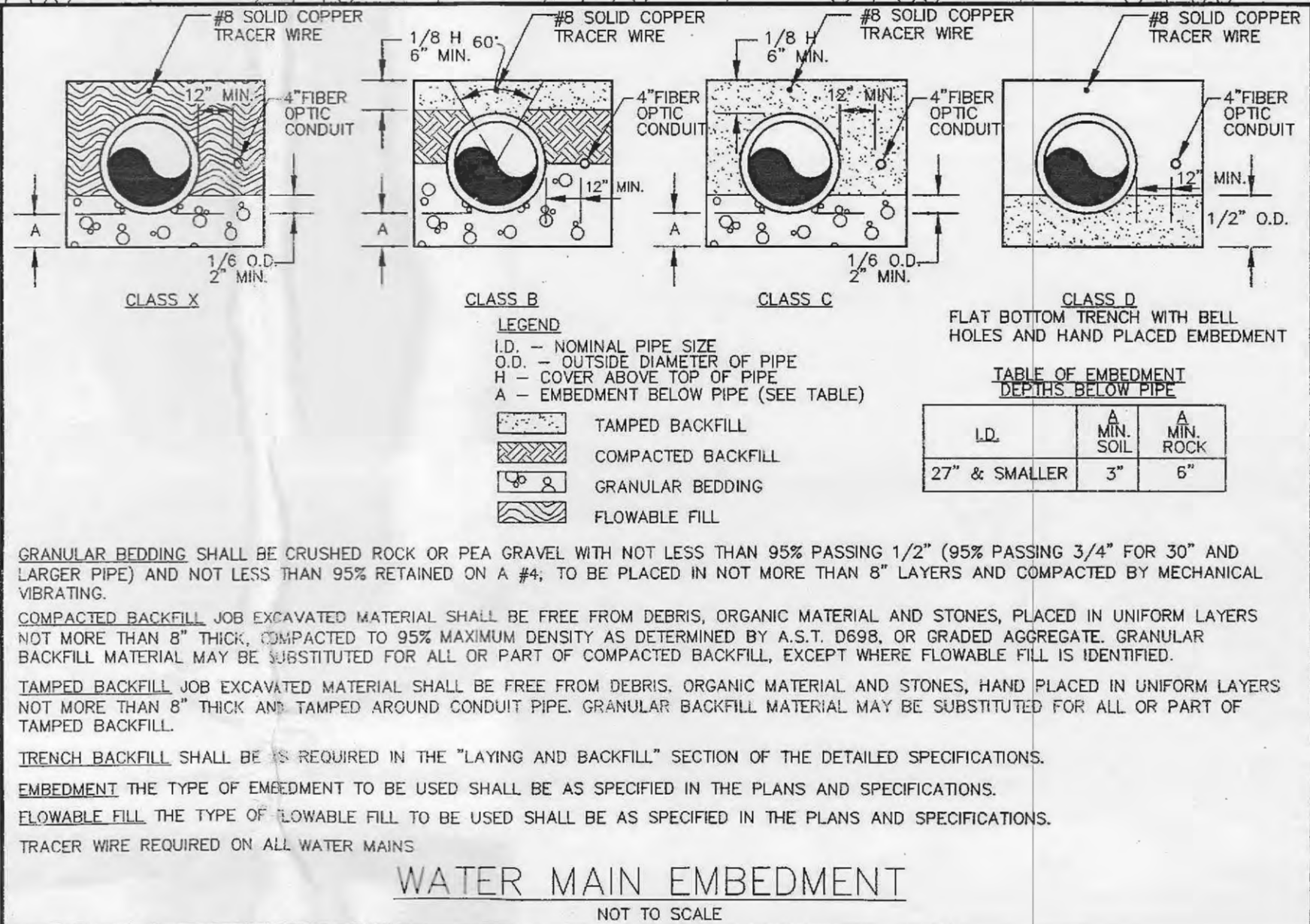
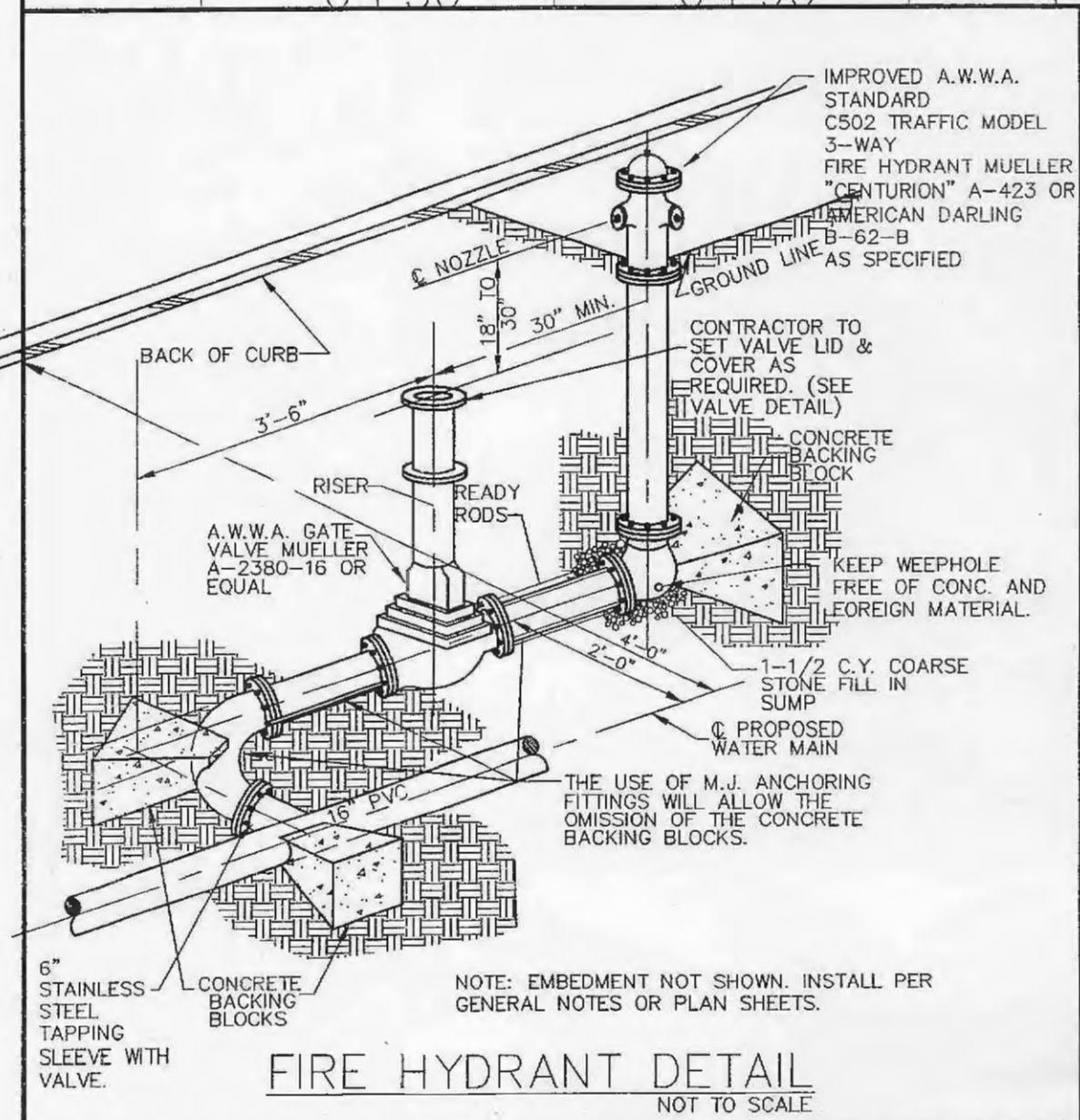
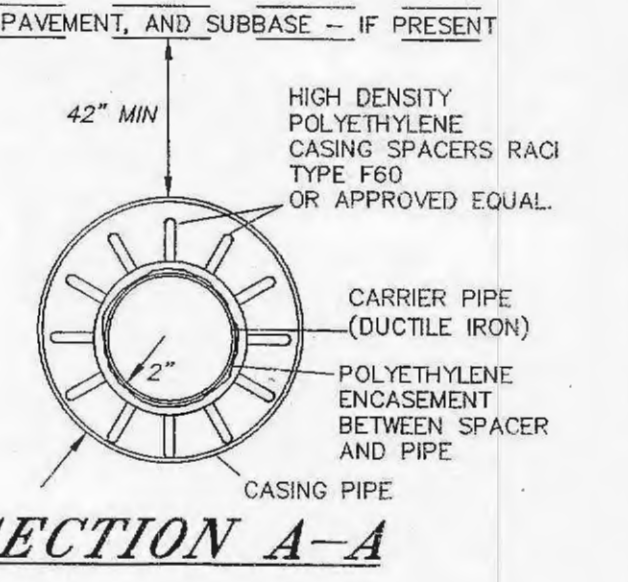


- BORING NOTES**
- INSTALLATION OF THE CASING AND CARRIER PIPES SHALL MEET THE REQUIREMENTS FOR THE CITY OF FALLON SPECIFICATIONS.
 - ALL JOINTS IN THE CASING PIPE SHALL BE WELDED.
 - THE PIPE TO BE PLACED IN THE BORE HOLE SHALL BE CAST-IRON PIPE EXCEPT AS REQUIRED ON THE PLANS.
 - STEEL CASING PIPE USED IN THE INSTALLATION OF WATER OR SEWER LINE AND CONDUITS SHALL HAVE A MINIMUM YIELD STRENGTH OF 35,000 P.S.I.
 - CARRIER PIPE SHALL BE 8" DIA. FOR WATER & 12" DIA. FOR SANITARY.
 - CASING PIPE SHALL BE 12" DIA. STEEL FOR WATER & 16" DIA. STEEL FOR SANITARY.
 - NOTE: EXISTING FACILITIES ARE TO REMAIN IN USE AT ALL TIMES. IT IS THE RESPONSIBILITY OF THE CONTRACTOR TO LOCATE ALL SERVICE LINES AND UTILITIES PRIOR TO CONSTRUCTION.

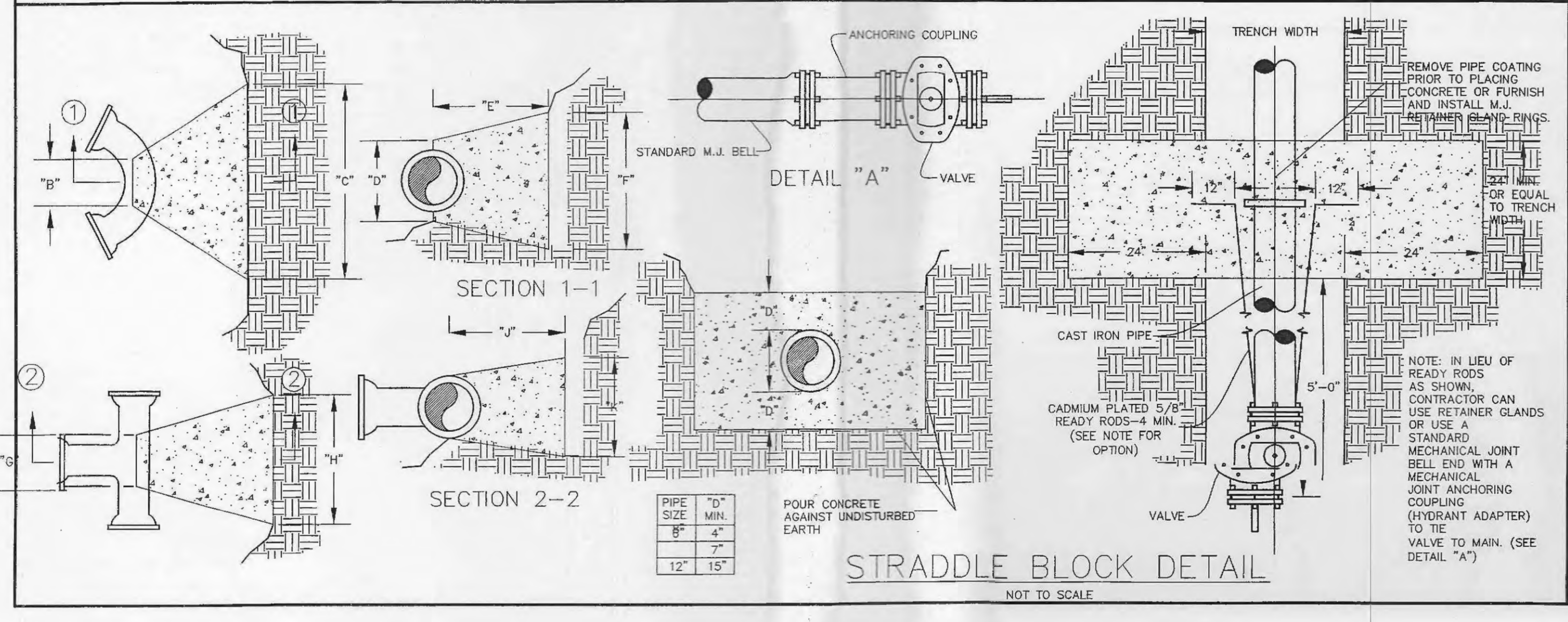


Call Before you DIG
TOLL FREE
1-800-344-7483
MISSOURI ONE-CALL SYSTEM INC.
MODOT (314) 340-4100

Underground facilities, structures and utilities have been plotted from available surveys, records and information and, therefore, do not necessarily reflect the actual existence, nonexistence, size, type, number of, location or depth of these facilities, structures and utilities.

The Contractor shall be responsible for verifying the actual location of all underground facilities, structures and utilities, either shown or not shown on these plans. The underground facilities, structures and utilities shall be located in the field prior to any grading, excavation or construction of improvements. Should the actual location, size or depth of any underground facilities, structures or utilities differ from those indicated on these plans, the Contractor shall immediately notify Clayton Engineering prior to proceeding with the installation of any proposed improvements in the area where the difference exists. These provisions shall in no way obviate any party from complying with the Underground Facility Safety and Damage Prevention Act, Chapter 319, RSMO.

The signed and sealed original of this drawing is on file at the offices of the Clayton Engineering Company, Inc. The signed and sealed original is the official document and shall take precedence over any digital version.

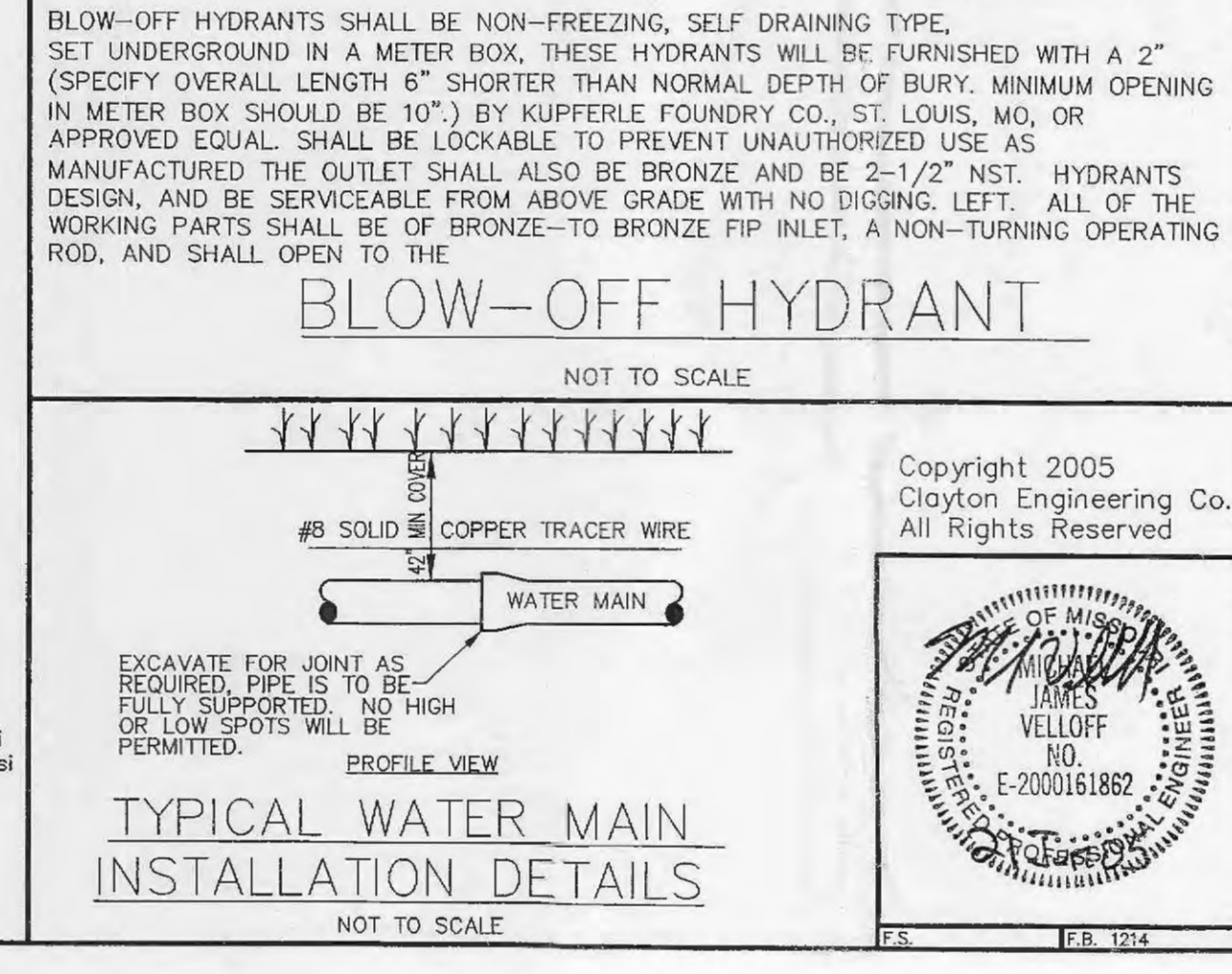


BACKING BLOCKS
NOT TO SCALE

BENDS	"B"	"C"	"D"	"E"	"F"
6"-11 1/4"	8" 15"	12" 24"	10"		
6"-22 1/2"	8" 10"	12" 24"	13"		
6"-45"	8" 30"	12" 24"	15"		
6"-90"	8" 30"	12" 24"	28"		
8"-11 1/4"	8" 20"	12" 24"	10"		
8"-22 1/2"	8" 22"	12" 24"	18"		
8"-45"	8" 31"	12" 24"	24"		
8"-90"	8" 38"	12" 24"	36"		
12"-11 1/4"	8" 30"	12" 24"	15"		
12"-22 1/2"	8" 35"	12" 24"	25"		
12"-45"	8" 40"	12" 24"	40"		
12"-90"	8" 60"	12" 24"	52"		
16"-11 1/4"	TL 28"	20" 24"	28"		
16"-22 1/2"	TL 39"	20" 24"	39"		
16"-45"	TL 55"	20" 24"	55"		
16"-90"	TL 91"	20" 24"	60"		
20"-11 1/4"	TL 34"	24" 28"	28"		
20"-22 1/2"	TL 48"	24" 28"	39"		
20"-45"	TL 74"	24" 28"	55"		
20"-90"	TL 136"	24" 28"	60"		
24"-11 1/4"	TL 40"	28" 34"	40"		
24"-22 1/2"	TL 56"	28" 34"	56"		
24"-45"	TL 101"	28" 34"	60"		
24"-90"	TL 186"	28" 34"	60"		
30"-11 1/4"	TL 49"	34" 30"	49"		
30"-22 1/2"	TL 79"	34" 30"	60"		
30"-45"	TL 154"	34" 30"	60"		
30"-90"	TL 285"	34" 30"	60"		

NOTES:
1. 2" & 4" FITTINGS EQUIVALENT TO 6" FITTINGS.
2. TAPPING SLEEVES TO HAVE BACKING BLOCKS SAME SIZE AS REQUIRED FOR TEES.
3. "TL" = TOTAL LENGTH OF FITTING MINUS CLEARANCE FOR BELLS.

INTERNAL WATER PRESSURE 6" THRU 12"=200 psi
INTERNAL WATER PRESSURE 16" THRU 30"=210 psi
BEARING PRESSURE OF SOIL=2000 psi



WATER PROFILES & DETAILS
PHILLIPS 66

BRYAN ROAD
Prepared for:

U-GAS STL, INC.
895 BOLGER CT.
FENTON, MO 63026
314-343-9770

Designed SWQ
Drawn SLH
Checked MJV
Date 02-03-05
Project Number 04221
Sheet Number 7A of 13

Copyright 2005 Clayton Engineering Co. All Rights Reserved.

the clayton engineering company, inc.
ENGINEERS • SURVEYORS • PLANNERS
11920 WESTLINE INDUSTRIAL DRIVE
ST. LOUIS, MISSOURI 63146
(314) 692-8888 FAX (314) 692-8688
clayton-engineering.com