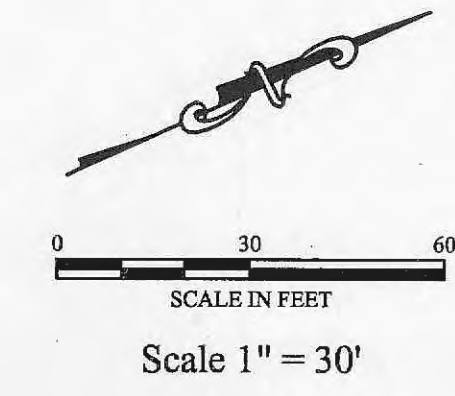
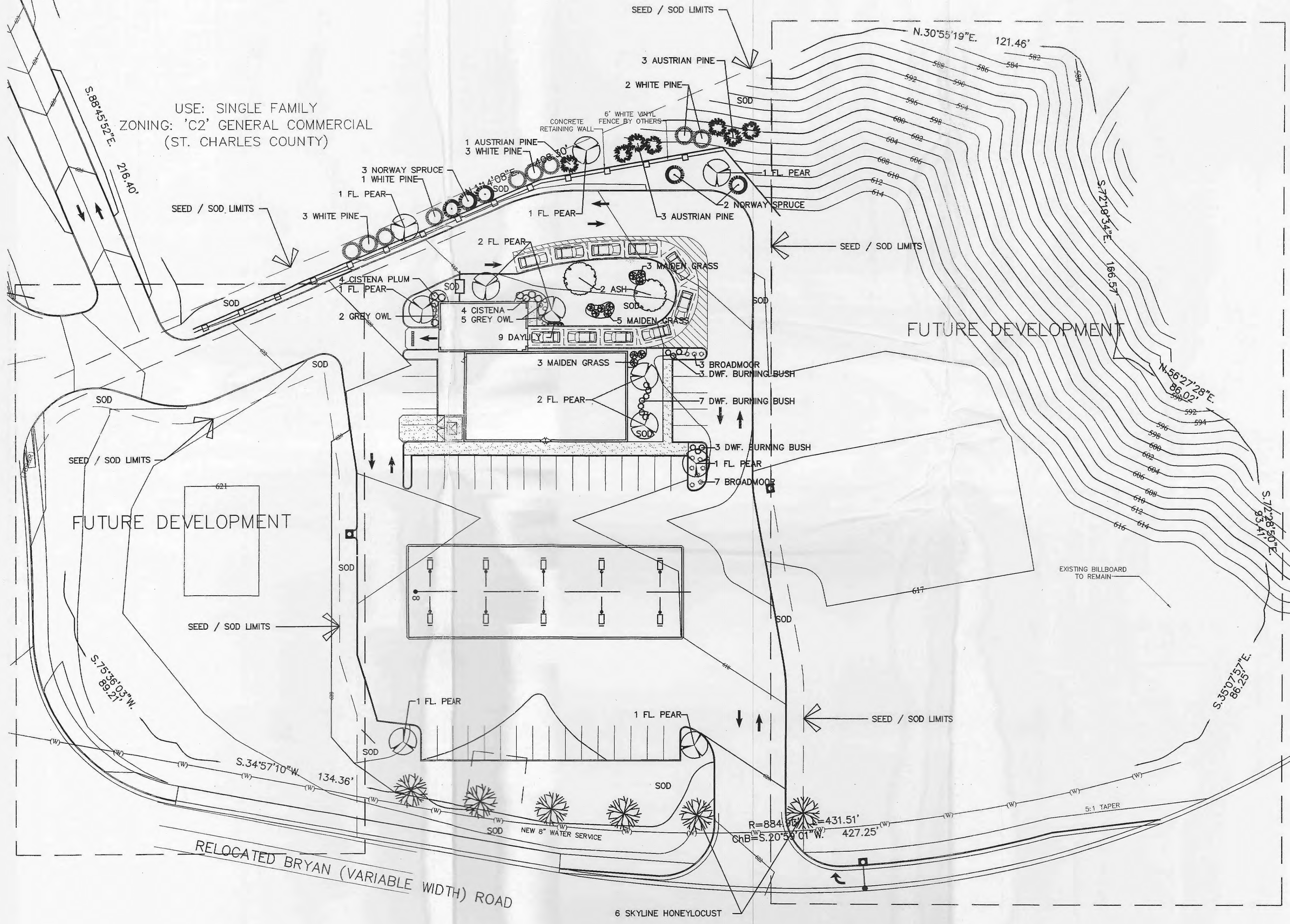


USE: SINGLE FAMILY  
 ZONING: 'C2' GENERAL COMMERCIAL  
 (ST. CHARLES COUNTY)



USE: SINGLE FAMILY  
 ZONING: 'C2' GENERAL COMMERCIAL  
 (ST. CHARLES COUNTY)

USE: SINGLE FAMILY  
 ZONING: 'C2' GENERAL COMMERCIAL  
 (ST. CHARLES COUNTY)



**LANDSCAPE REQUIREMENTS:**  
 ZONED COMMERCIAL

ONE TREE PER 40 LIN. FT. STREET FRONTAGE:  
 238 LIN. FT. = 6 STREET TREES  
 6 STREET TREES PROVIDED

ONE TREE PER 3,000 SQ. FT. LANDSCAPED OPEN SPACE  
 AND/OR ATLEAST 6% OF PARKING LOT TO BE LANDSCAPED:  
 32,722 SQ. FT. LANDSCAPED OPEN SPACE = 11 TREES  
 11 TREES PROVIDED WITHIN PARKING LOT INTERIOR

100 FT. BUFFERYARD =  
 2 PLANT UNITS (60 PTS.) & 6' WHITE VINYL FENCE  
 10 POINTS = 1 CANOPY 2.5" OR 1 EVERGREEN TREE 6-8'  
 5 POINTS = 1 ORNAMENTAL TREE 1.5-2"  
 1 POINT = 1 SHRUB 18-24"  
 295 FT. = 6 PLANT UNITS OR 180 POINTS  
 180 POINTS PROVIDED IN BACK BUFFER

ONE ACRE = 15 TREES  
 .3 ACRES = 5 TREES  
 5 TREES PROVIDED

**MATERIAL LIST:**

6	SKYLINE HONEYLOCUST	2.5"
2	ASH	2.5"
11	CLEVELAND SELECT PEAR	2.5"
5	NORWAY SPRUCE	6-8'
7	AUSTRIAN PINE	6-8'
9	WHITE PINE	6-8'
8	CISTENA PLUM	6-8'
11	MAIDEN GRASS	2-3'
13	DWF. BURNING BUSH	5 GAL.
7	GREY OWL JUNIPER	18-24"
10	BROADMOOR JUNIPER	18-24"
9	STELLA DE ORO DAYLILY	5 GAL.
10	CU. YDS. BARK MULCH	1 GAL.

Drawn by: Karen L. Penrod  
 Scale: 1" = 30"  
 Date: 11-28-04  
 Revised: 12-2-04

BAXTER FARMS  
 and NURSERIES  
 3411 CREVE COEUR MILL ROAD  
 ST. LOUIS, MISSOURI 63146  
 314/542-9400

Landscape planning plan for  
**Phillips 66**  
 Bryan Road/Fulton, MO 63166  
 Prepared for: U-Gas, Incorporated

Drawing Number:  
 L-1  
 of one

*Donk  
 Martel*