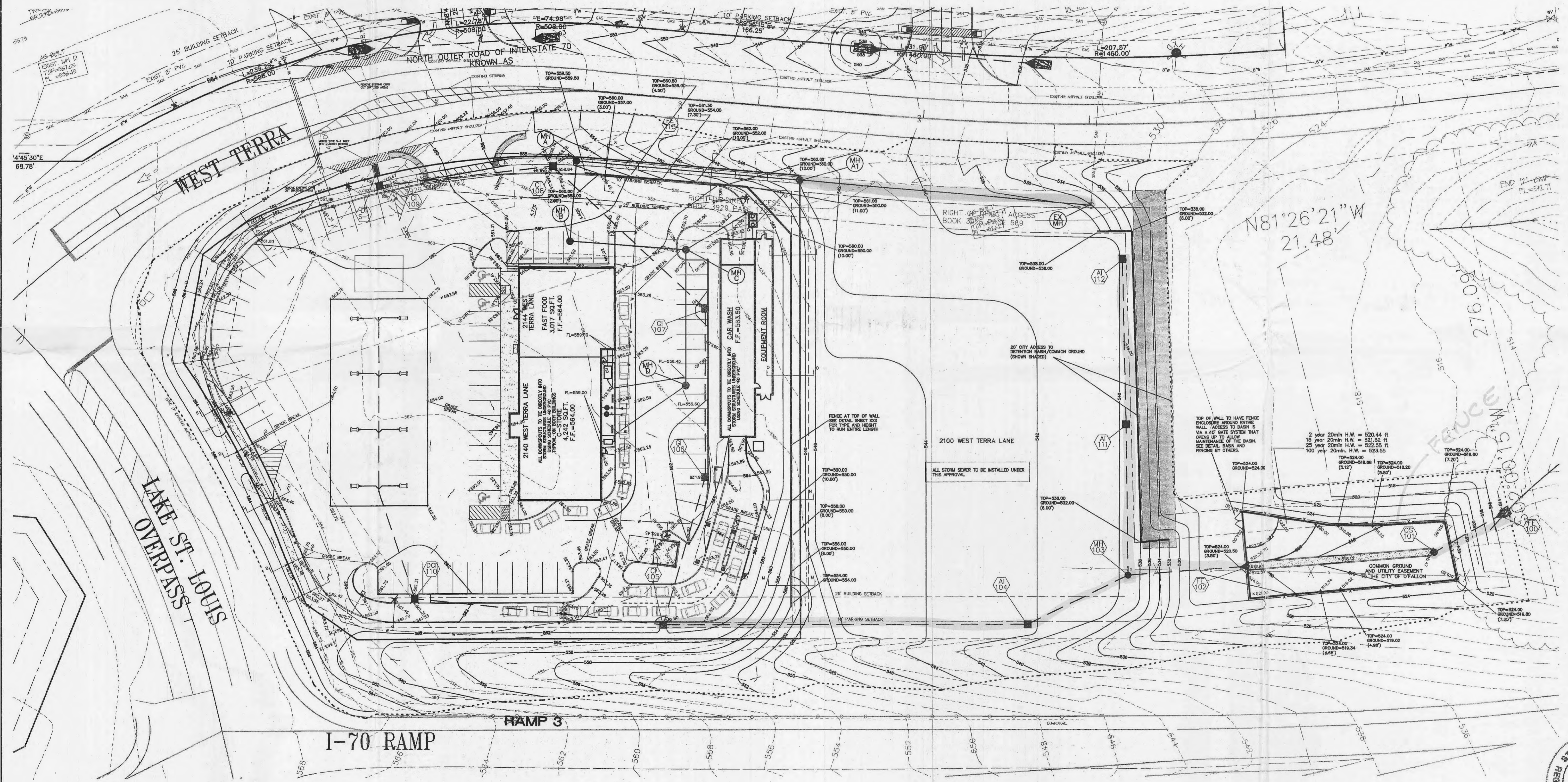
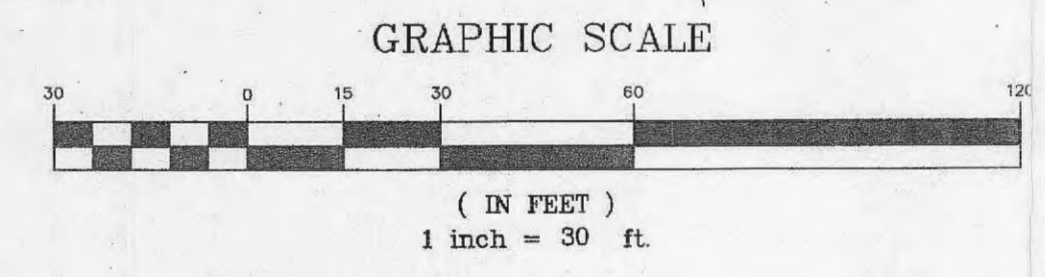


Eng

A GRADING PLAN FOR
PHILLIPS 66 AT PERUQUE CROSSING
TWO TRACTS OF LAND IN
U.S. SURVEY 54,
AND FRACTIONAL SECTION 26,
TOWNSHIP 47 NORTH, RANGE 2 EAST
OF THE FIFTH PRINCIPAL MERIDIAN
ST. CHARLES COUNTY, MISSOURI



RECEIVED
OCT 03 2005
ENGINEERING DEPARTMENT

STATE OF MISSOURI
REGISTERED PROFESSIONAL ENGINEER
RICHARD L. FRANCIS
MAYOR 52051

E:\DWG\A110000PLUS\11262M-MIKE JONES PERUQUE\CONSTRUCTION\11262MCON.DWG, GRADING 2, 10/3/2005 11:54:28 AM, I:1, S:4 38 SWR