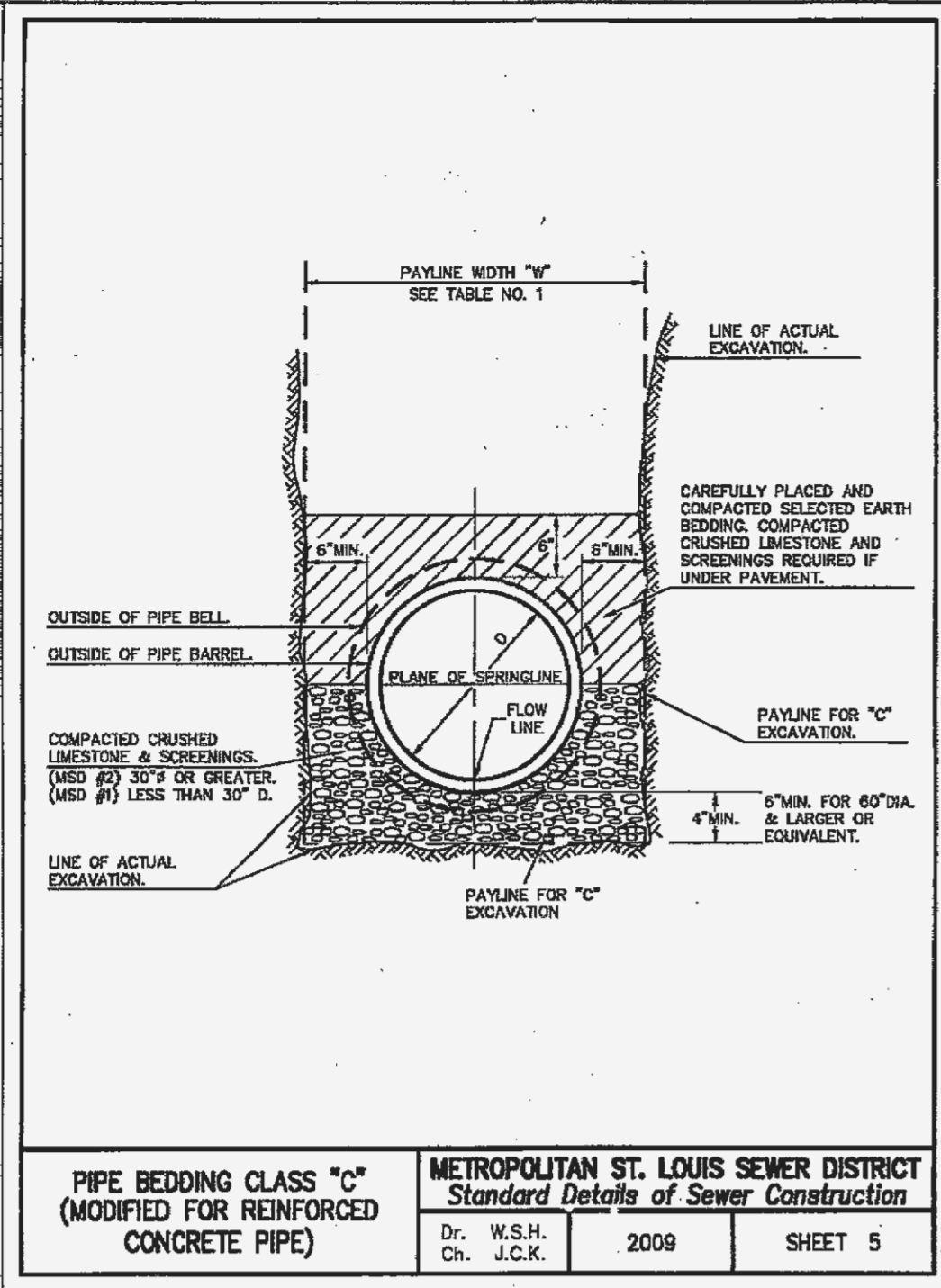


PIPE BEDDING CLASS "c"
(FOR ALL 6" TO 18" PIPE EXCEPT REINFORCED CONCRETE PIPE)

METROPOLITAN ST. LOUIS SEWER DISTRICT
Standard Details of Sewer Construction

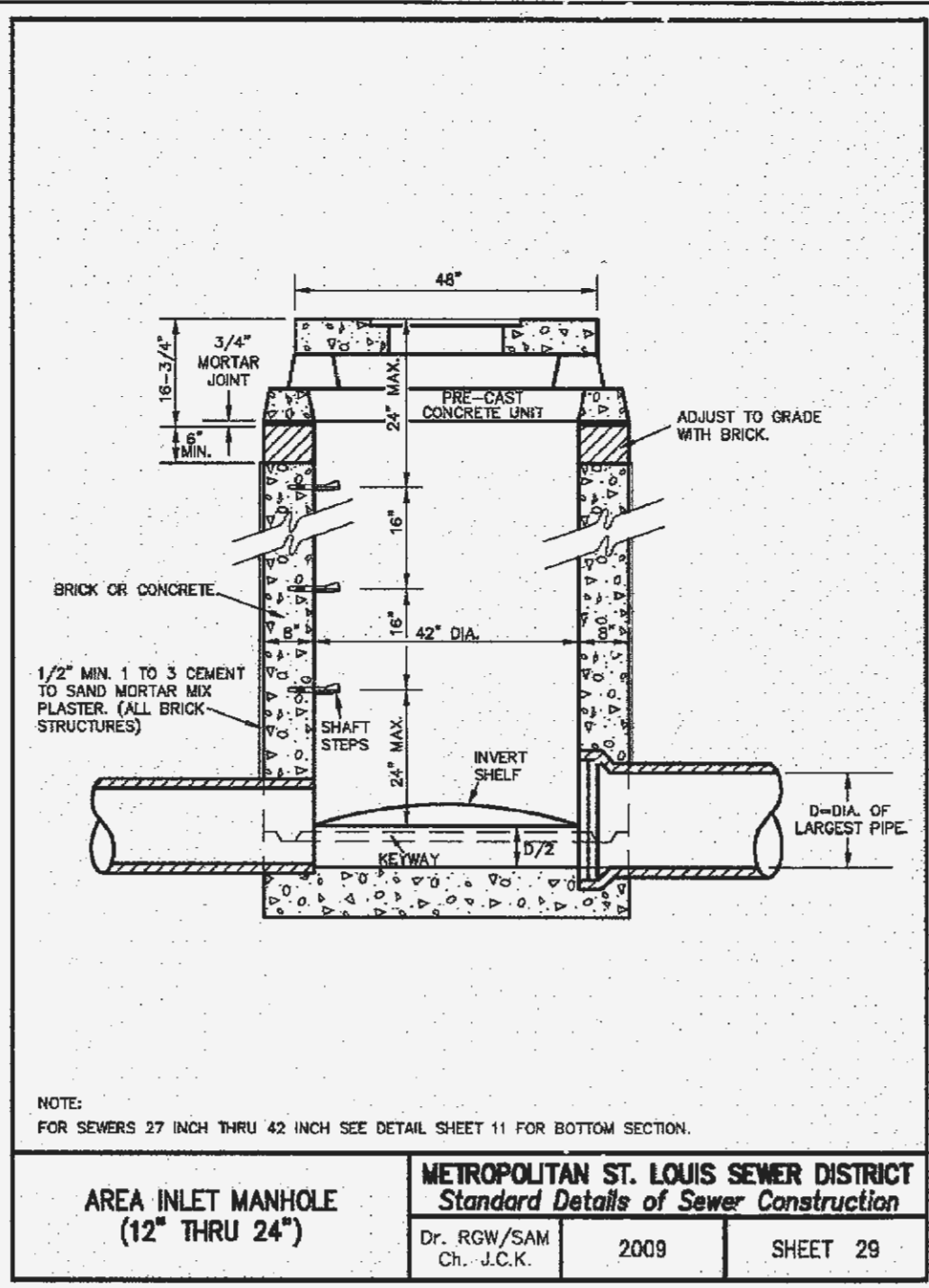
Dr. W.S.H./Ch. J.C.K. 2009 SHEET 4



PIPE BEDDING CLASS "c"
(MODIFIED FOR REINFORCED CONCRETE PIPE)

METROPOLITAN ST. LOUIS SEWER DISTRICT
Standard Details of Sewer Construction

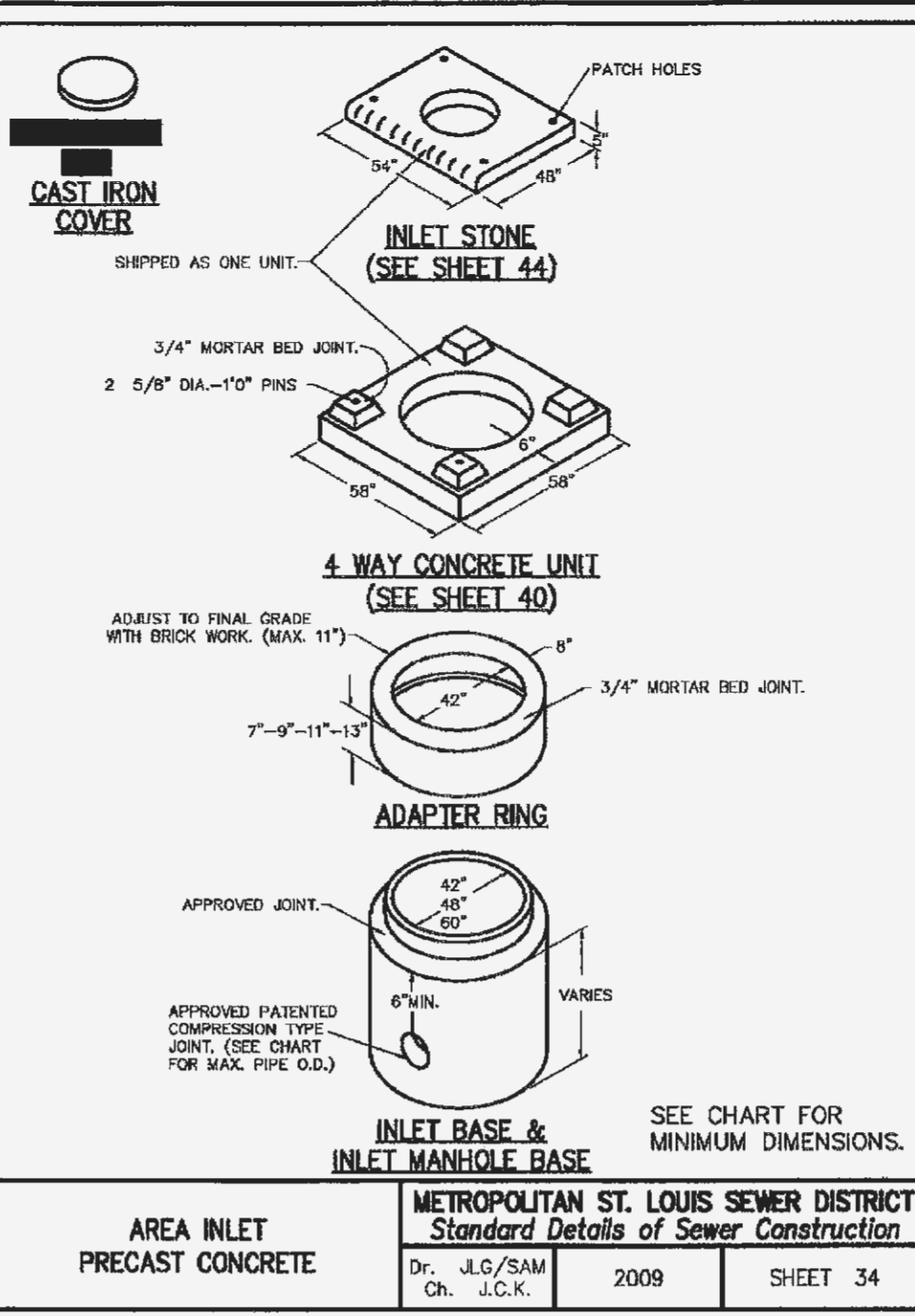
Dr. W.S.H./Ch. J.C.K. 2009 SHEET 5



AREA INLET MANHOLE (12" THRU 24")

METROPOLITAN ST. LOUIS SEWER DISTRICT
Standard Details of Sewer Construction

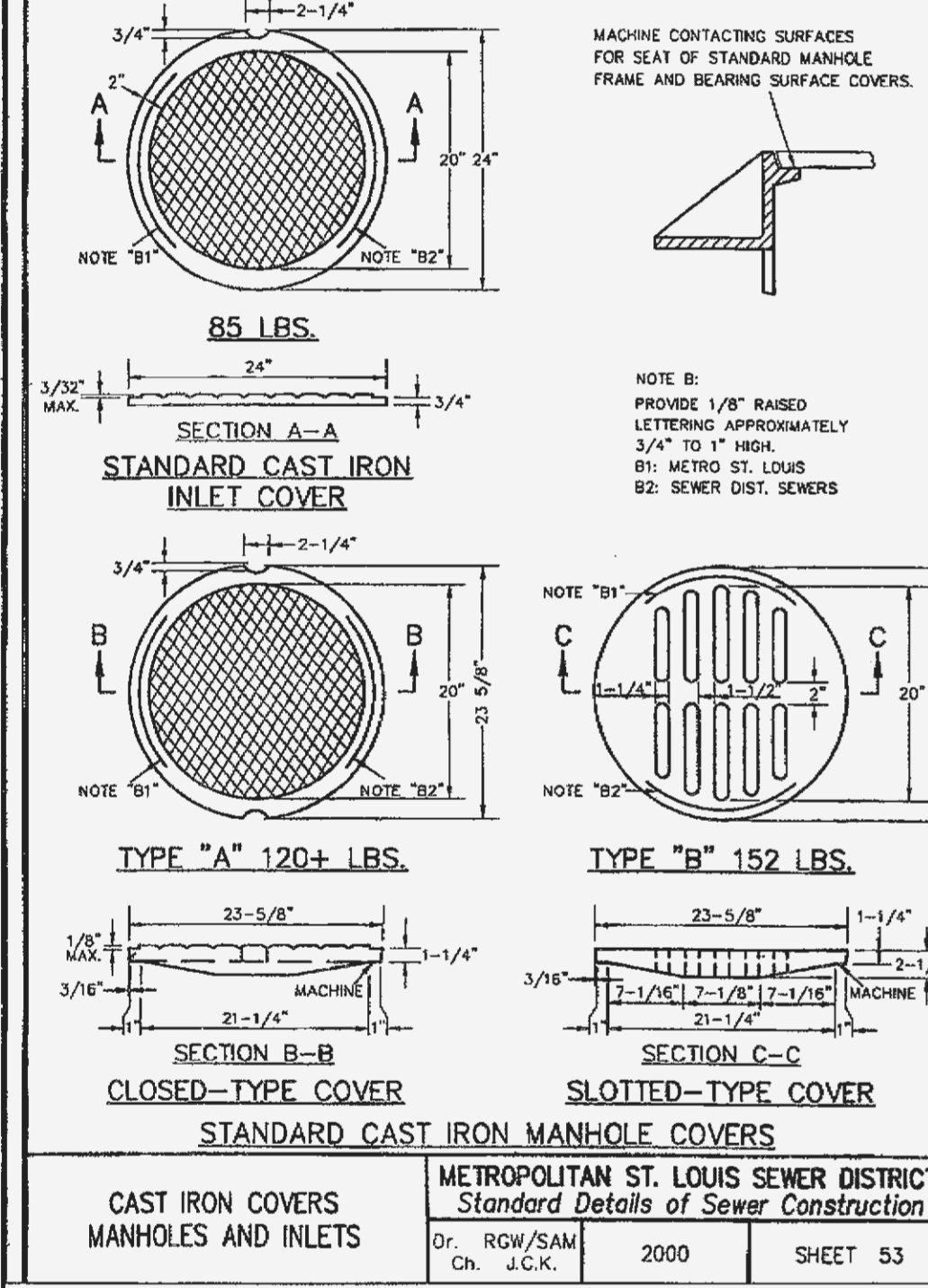
Dr. RGV/SAM Ch. J.C.K. 2009 SHEET 29



AREA INLET PRECAST CONCRETE

METROPOLITAN ST. LOUIS SEWER DISTRICT
Standard Details of Sewer Construction

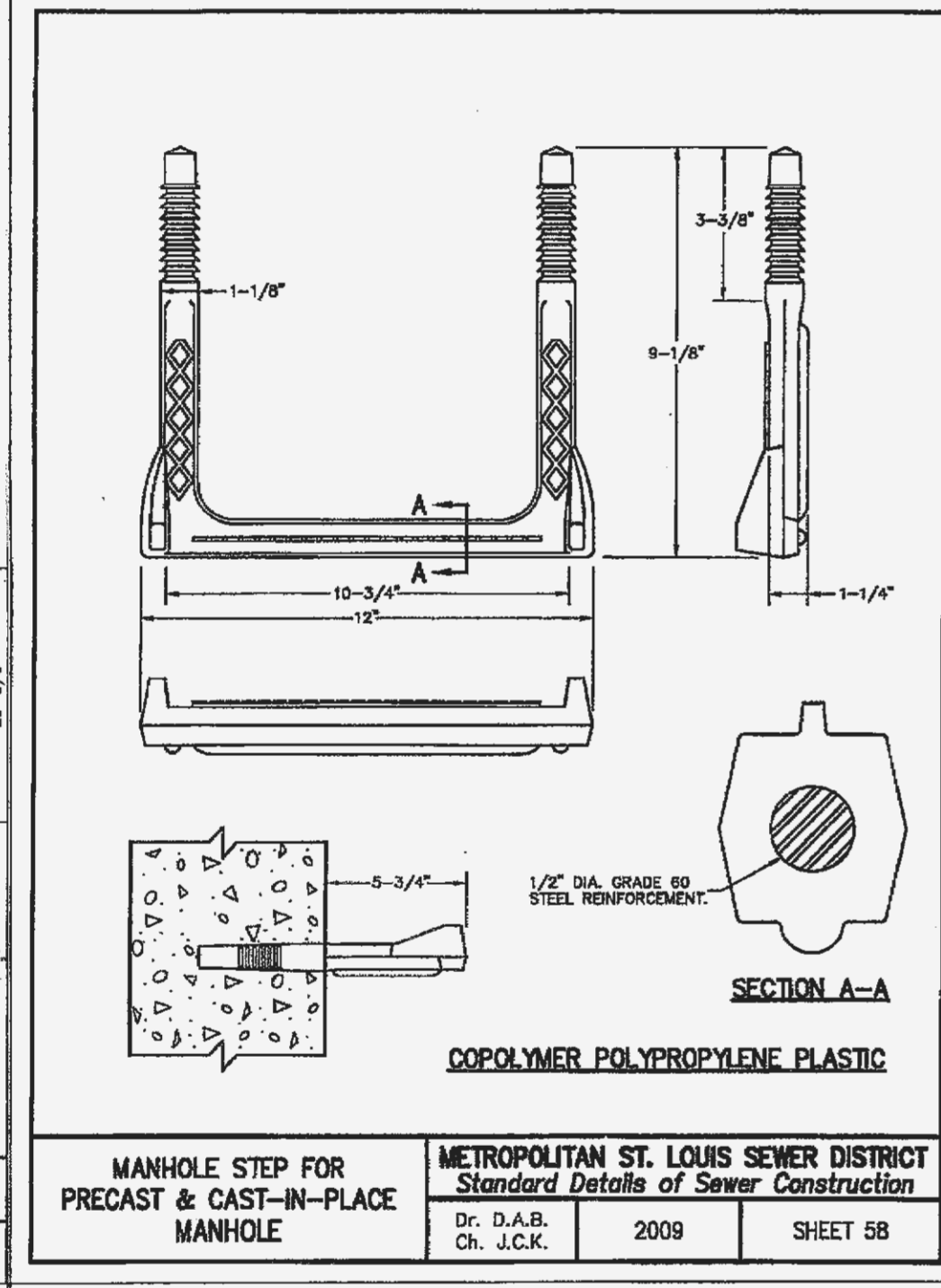
Dr. J.G./SAM Ch. J.C.K. 2009 SHEET 34



CAST IRON COVERS MANHOLES AND INLETS

METROPOLITAN ST. LOUIS SEWER DISTRICT
Standard Details of Sewer Construction

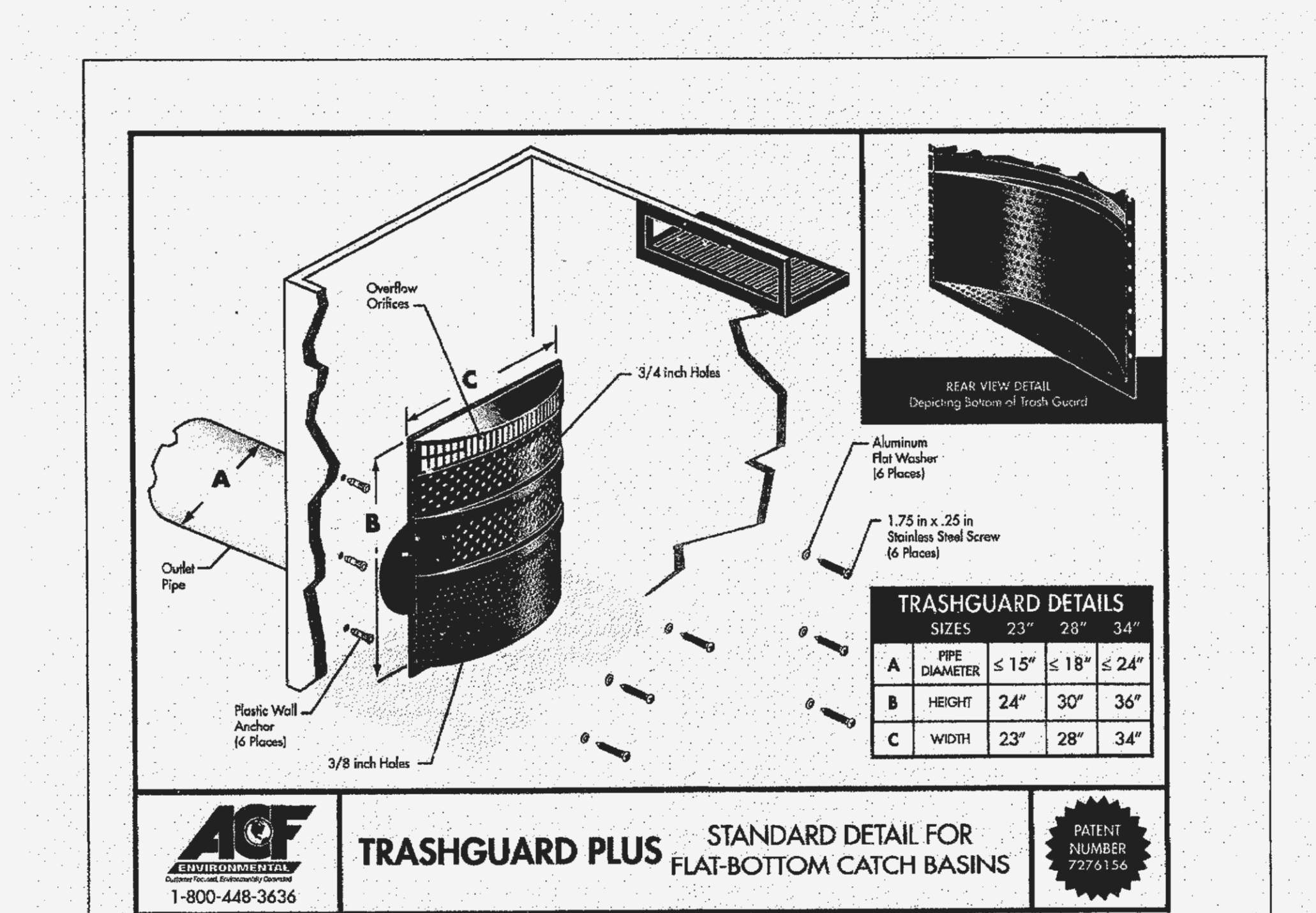
Dr. RGV/SAM Ch. J.C.K. 2000 SHEET 53



MANHOLE STEP FOR PRECAST & CAST-IN-PLACE MANHOLE

METROPOLITAN ST. LOUIS SEWER DISTRICT
Standard Details of Sewer Construction

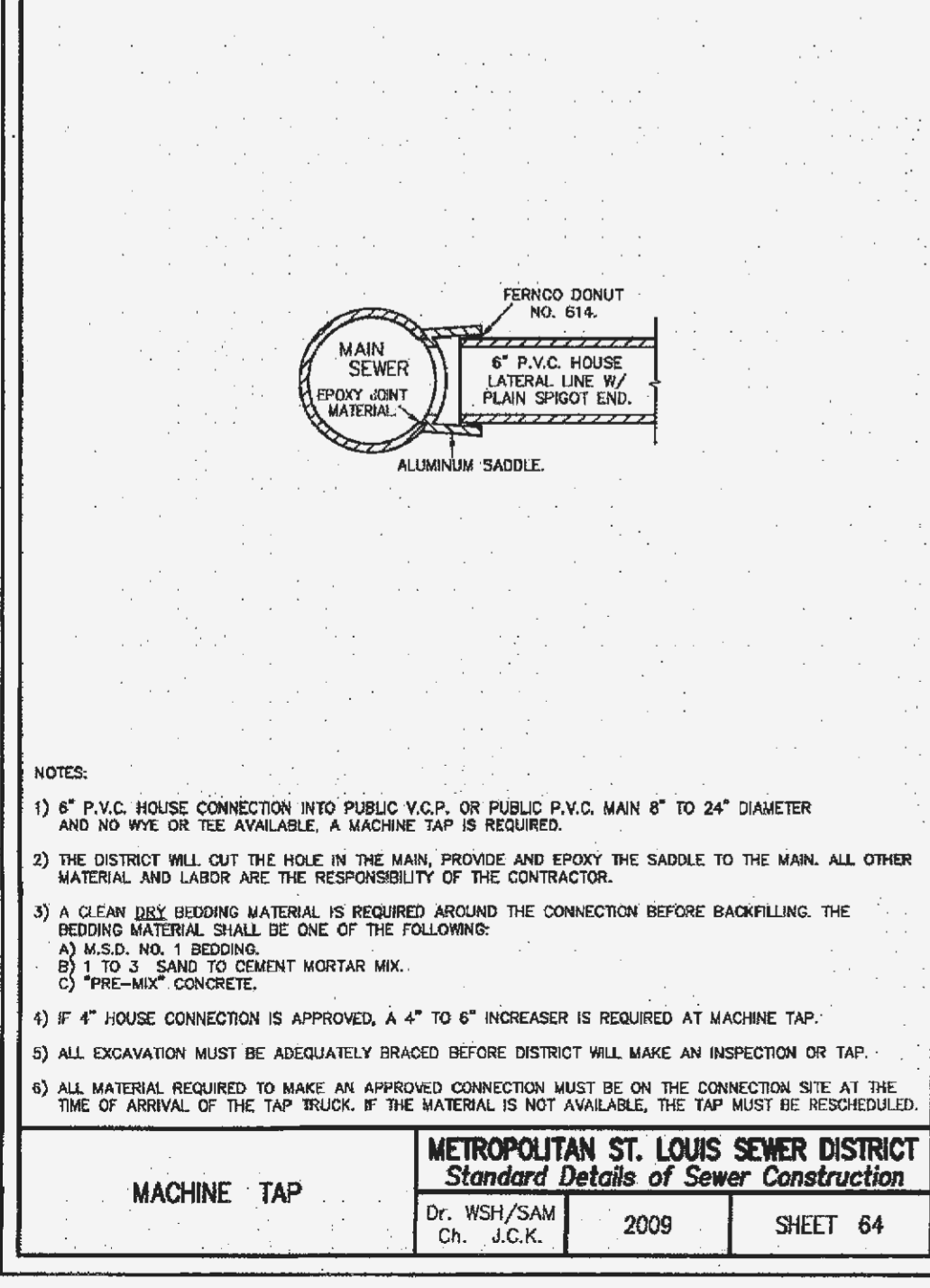
Dr. D.A.B./Ch. J.C.K. 2009 SHEET 58



TRASHGUARD PLUS STANDARD DETAIL FOR FLAT-BOTTOM CATCH BASINS

ACF ENVIRONMENTAL SOLUTIONS
1-800-448-3636

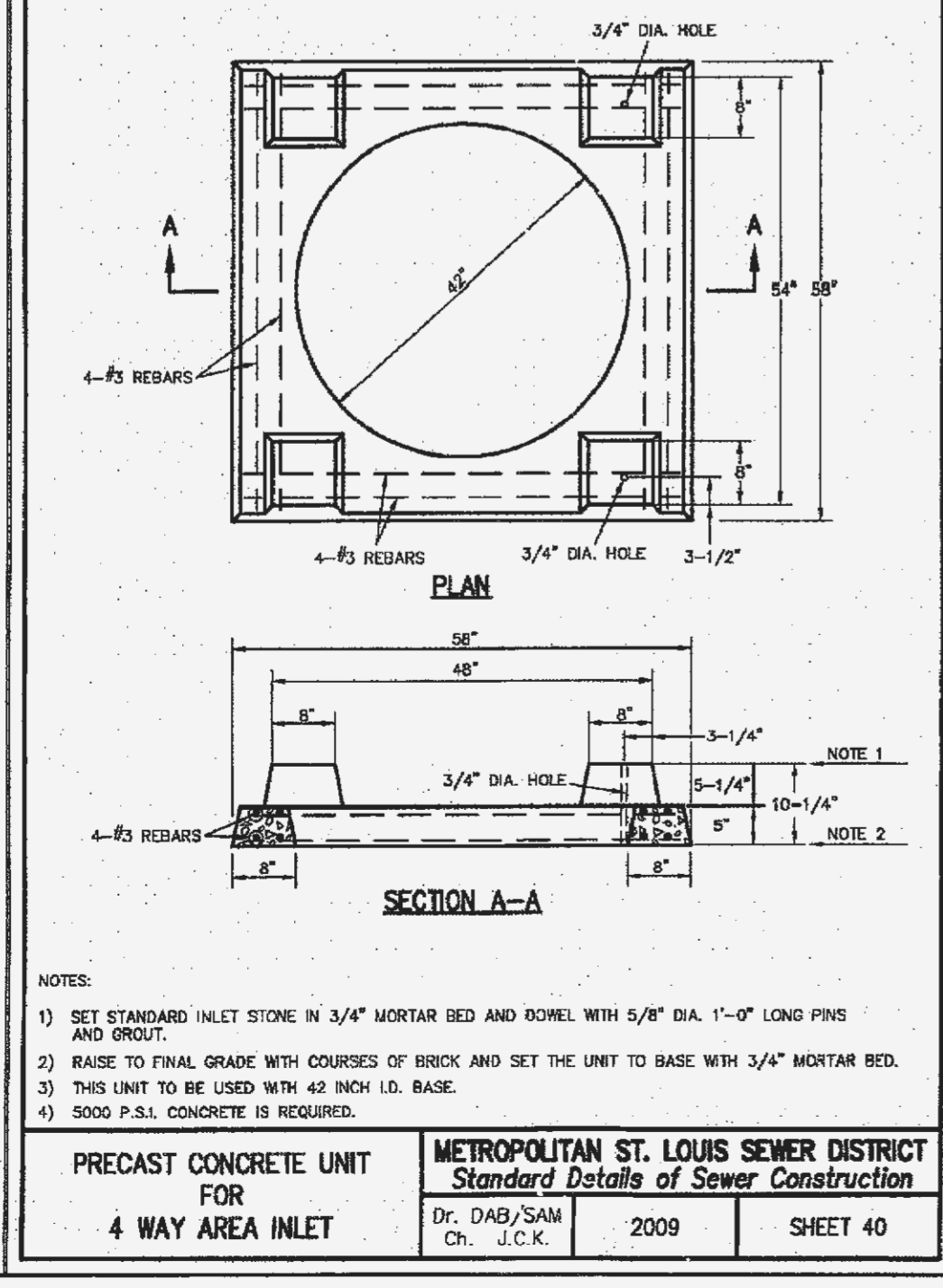
PATENT NUMBER 7276156



MACHINE TAP

METROPOLITAN ST. LOUIS SEWER DISTRICT
Standard Details of Sewer Construction

Dr. WSH/SAM Ch. J.C.K. 2009 SHEET 64



PRECAST CONCRETE UNIT FOR 4 WAY AREA INLET

METROPOLITAN ST. LOUIS SEWER DISTRICT
Standard Details of Sewer Construction

Dr. DAB/SAM Ch. J.C.K. 2009 SHEET 40

- NOTES:
- 1) 8" P.V.C. HOUSE CONNECTION INTO PUBLIC V.C.P. OR PUBLIC P.V.C. MAIN 8" TO 24" DIAMETER AND NO WYE OR TEE AVAILABLE. A MACHINE TAP IS REQUIRED.
 - 2) THE DISTRICT WILL CUT THE HOLE IN THE MAIN, PROVIDE AND EPOXY THE SADDLE TO THE MAIN. ALL OTHER MATERIAL AND LABOR ARE THE RESPONSIBILITY OF THE CONTRACTOR.
 - 3) A CLEAN JESS BEDDING MATERIAL IS REQUIRED AROUND THE CONNECTION BEFORE BACKFILLING. THE BEDDING MATERIAL SHALL BE ONE OF THE FOLLOWING:
 - A) M.S.D. NO. 1 BEDDING.
 - B) 1 TO 3 SAND TO CEMENT MORTAR MIX.
 - C) "PRE-MIX" CONCRETE.
 - 4) IF 4" HOUSE CONNECTION IS APPROVED, A 4" TO 6" INCREASER IS REQUIRED AT MACHINE TAP.
 - 5) ALL EXCAVATION MUST BE ADEQUATELY BRACED BEFORE DISTRICT WILL MAKE AN INSPECTION OR TAP.
 - 6) ALL MATERIAL REQUIRED TO MAKE AN APPROVED CONNECTION MUST BE ON THE CONNECTION SITE AT THE TIME OF ARRIVAL OF THE TAP TRUCK. IF THE MATERIAL IS NOT AVAILABLE, THE TAP MUST BE RESCHEDULED.

- NOTES:
- 1) SET STANDARD INLET STONE IN 3/4" MORTAR BED AND DOWEL WITH 5/8" DIA. 1'-0" LONG PINS AND GROUT.
 - 2) RAISE TO FINAL GRADE WITH COURSES OF BRICK AND SET THE UNIT TO BASE WITH 3/4" MORTAR BED.
 - 3) THIS UNIT TO BE USED WITH 42 INCH I.D. BASE.
 - 4) 5000 P.S.I. CONCRETE IS REQUIRED.

ENGINEER'S SEAL DOES NOT APPLY TO DETAILS ON THIS SHEET.

PROJECT TITLE:

PHOENIX METALS

ENGINEERING PLANNING SURVEYING
221 Point West Blvd.
St. Charles, MO 63301
636-928-5552
FAX 636-928-1718

DISCLAIMER OF RESPONSIBILITY
I hereby specify that the documents intended to be authorized by my seal are limited to this sheet, and I hereby disclaim any responsibility for all other drawings, specifications, estimates, reports or other documents or instruments relating to or intended to be used for any part or parts of the architectural or engineering project or work.

REVISIONS	
01/29/14	CITY COMMENTS
02/03/14	CITY COMMENTS
05/06/14	REVISE UTILITY LAYOUT
08/27/14	REVISE RAIN GARDENS
09/25/14	OWNER REVISIONS
11/20/14	WATER QUAL REVISIONS
12/12/14	CITY COMMENTS
01/28/15	OWNER REVISIONS
02/18/15	CITY/OWNER REVISIONS
04/21/15	CITY/OWNER REVISIONS

Developer / Owner:
MJSM, L.L.C.
2209 DROSTE ROAD
ST. CHARLES, MO 63301
636-949-0680

REFERENCE DETAILS

P+Z No.
#1407.05 & 1407.05.01
Approved May 2, 2013

City No.
#

Page No.
11 of 11

Issue Date: 09/06/2013