

**J. R. GRIMES**  
**CONSULTING ENGINEERS, INC.**  
 12300 OLD TESSON ROAD  
 SUITE 3000  
 ST. LOUIS, MO. 63128  
 PH. (314) 849-6100  
 PH. FAX (314) 849-6010

REV. NO.	REMARKS	PER DCSD COMMENTS	DATE
1			05-15-06

IMPROVEMENT PLANS FOR  
**PHOENIX WALK AT  
 WHINGHAVEN**

SHEET TITLE  
**EASEMENT PLAN**

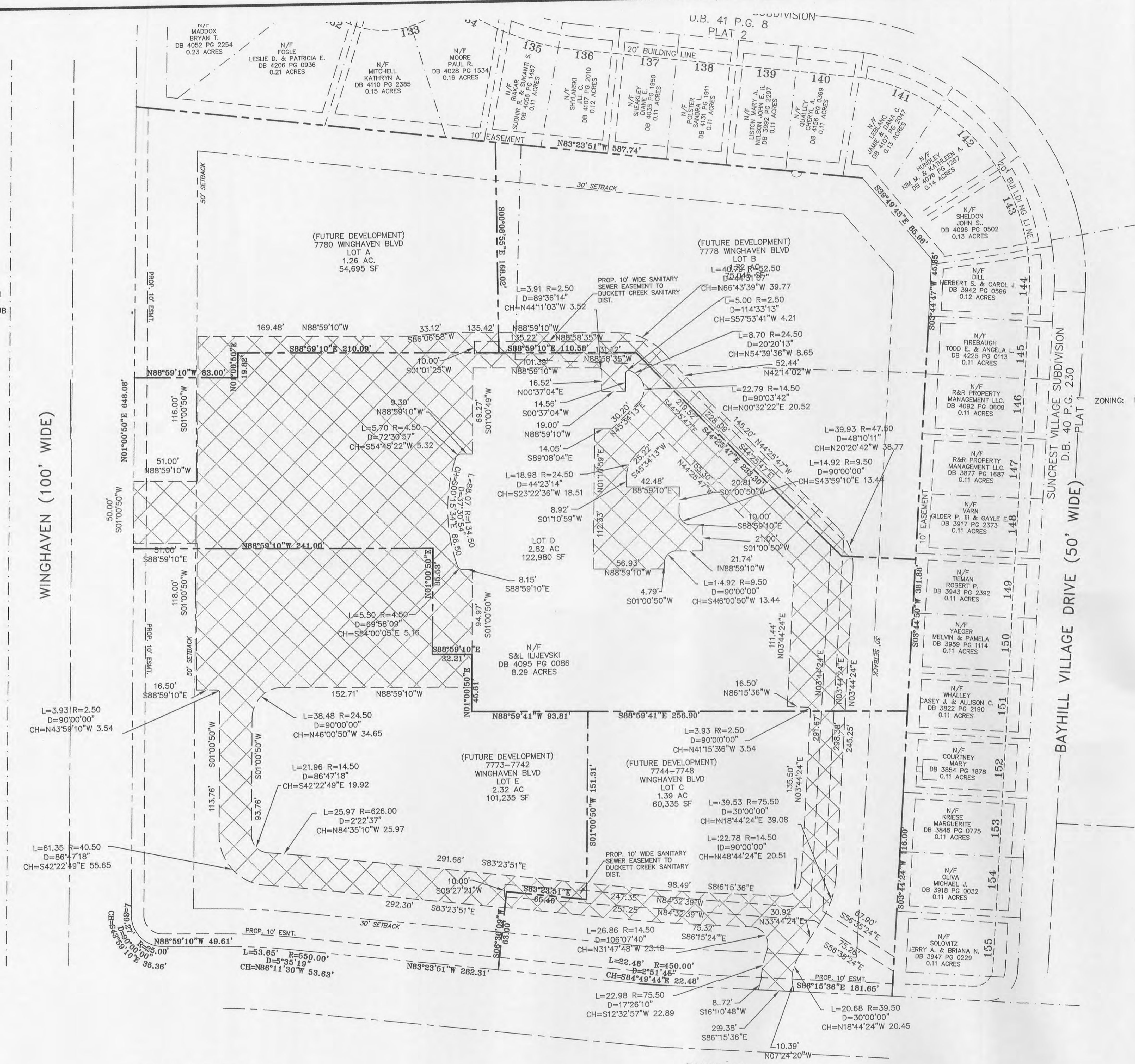
JOB NUMBER: 1482A  
 DRAWN BY: JSK  
 DATE: 05/17/06  
 CHECKED BY: LJM  
 DATE: 05/17/06  
 SHEET:

**C18.0**

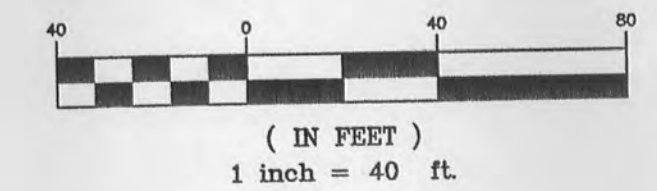
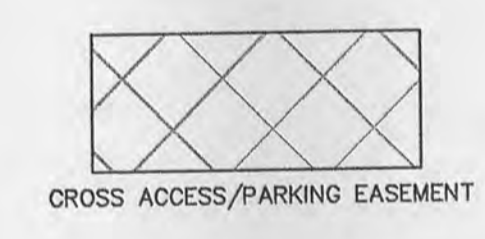
WINGHAVEN (100' WIDE)

BAYHILL VILLAGE DRIVE (50' WIDE)

PHOENIX PARKWAY (100' WIDE)



EASEMENTS TO BE  
 RECORDED BY RECORD PLAT



ZONING: R1  
 WINGHAVEN  
 COUNTRY CLUB

ZONING: HTCD

ZONING: R

PREPARED FOR:  
**PACE PROPERTIES**  
 CONTACT: RICK RANDALL  
 1401 South Brentwood Blvd, Suite 100  
 ST. LOUIS, MO 63144  
 PH: (314) 968-9898  
 FAX: (314) 968-5050

P&Z APPROVAL ON DEC 1, 2005  
 CITY OF O'FALLON FILE 9831.54.02