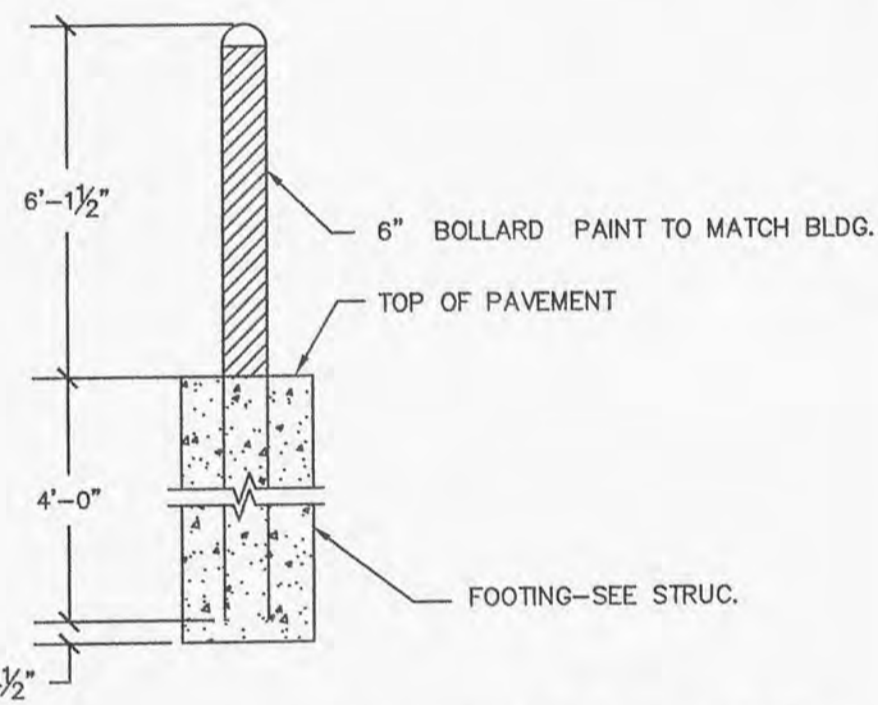
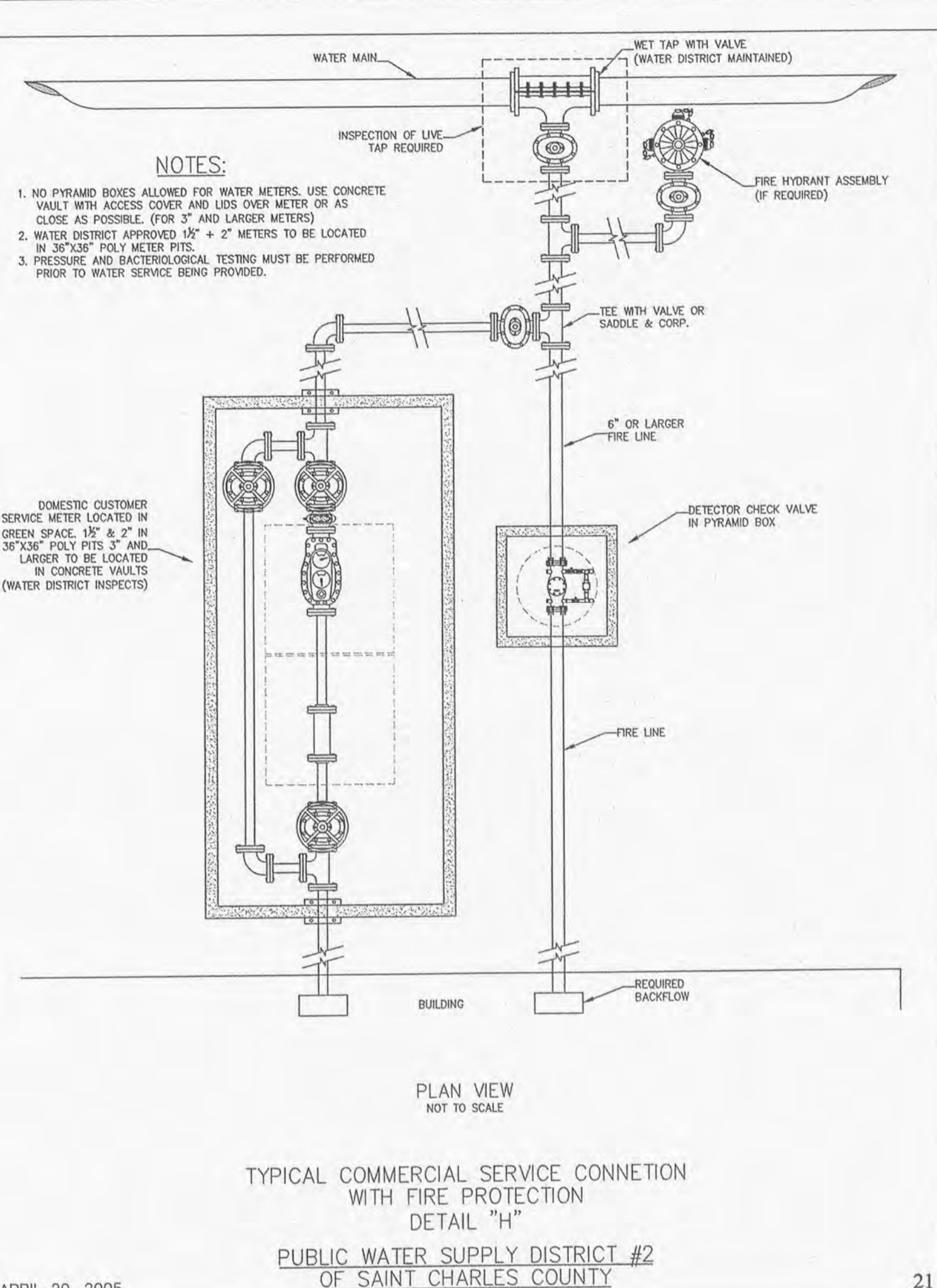


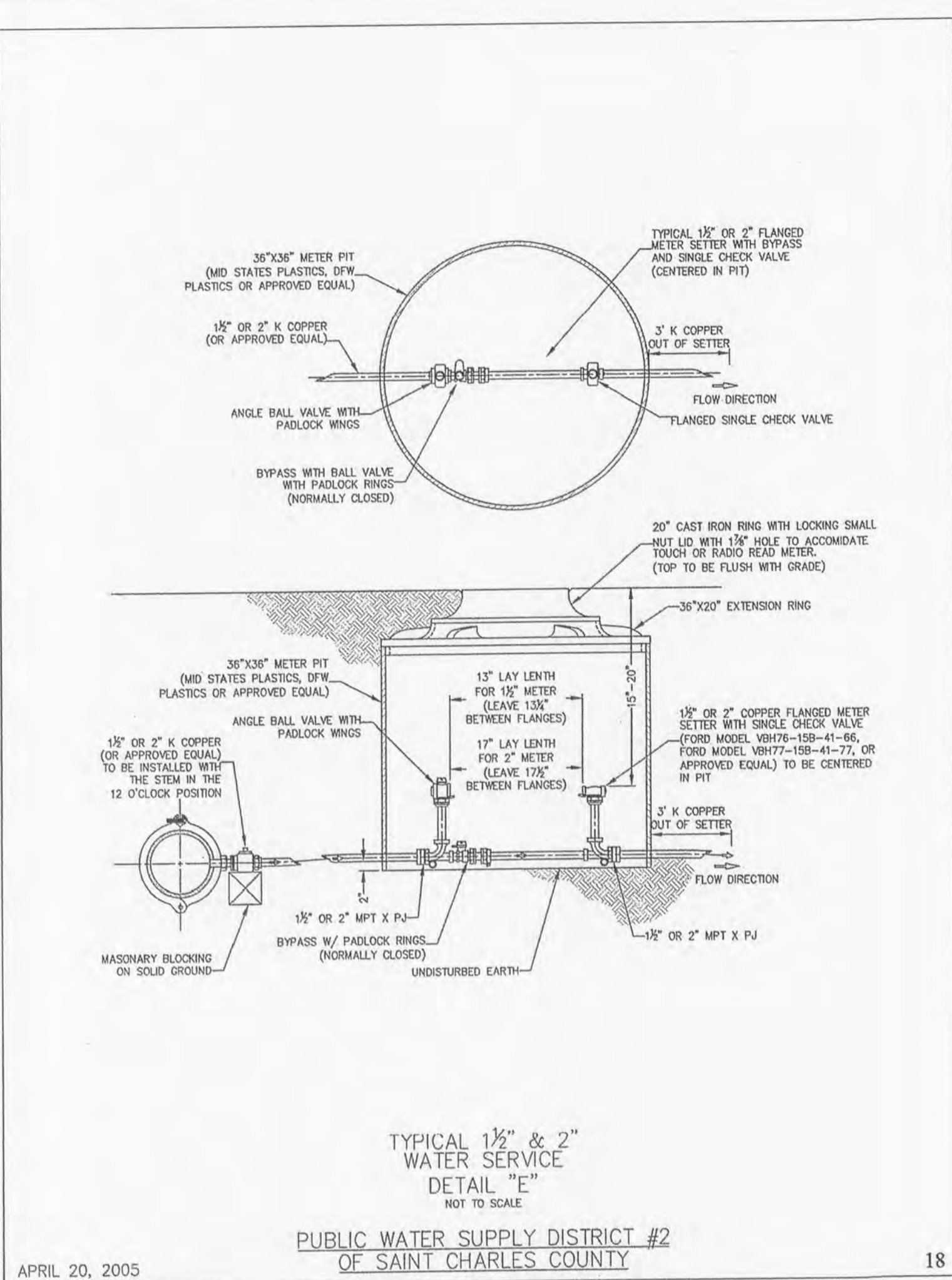
SIGHT-PROOF FENCE DETAIL
(MIN. 10' FROM RESIDENTIAL PROP. LINE)



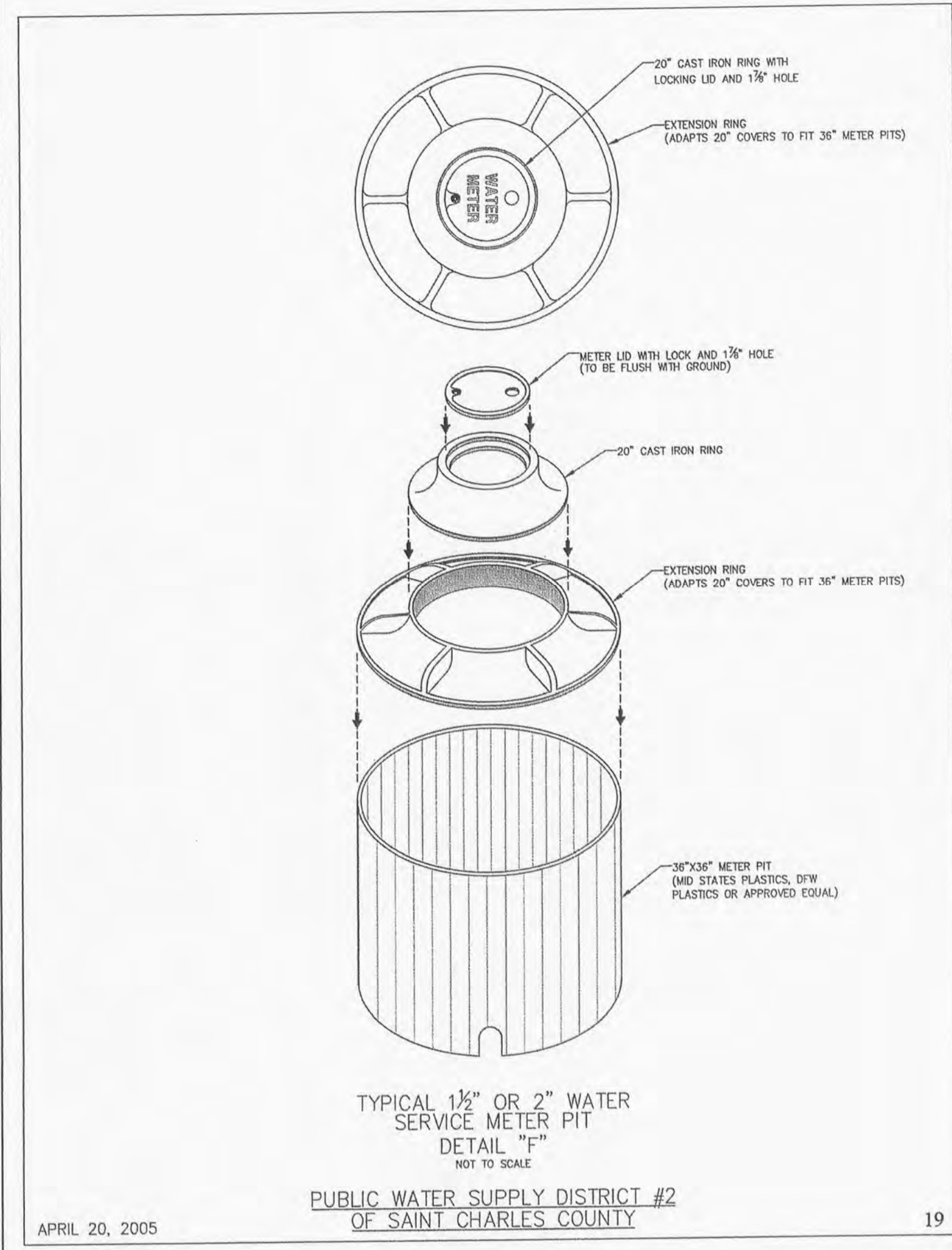
TRASH ENCLOSURE BOLLARD
SCALE: N.T.S.



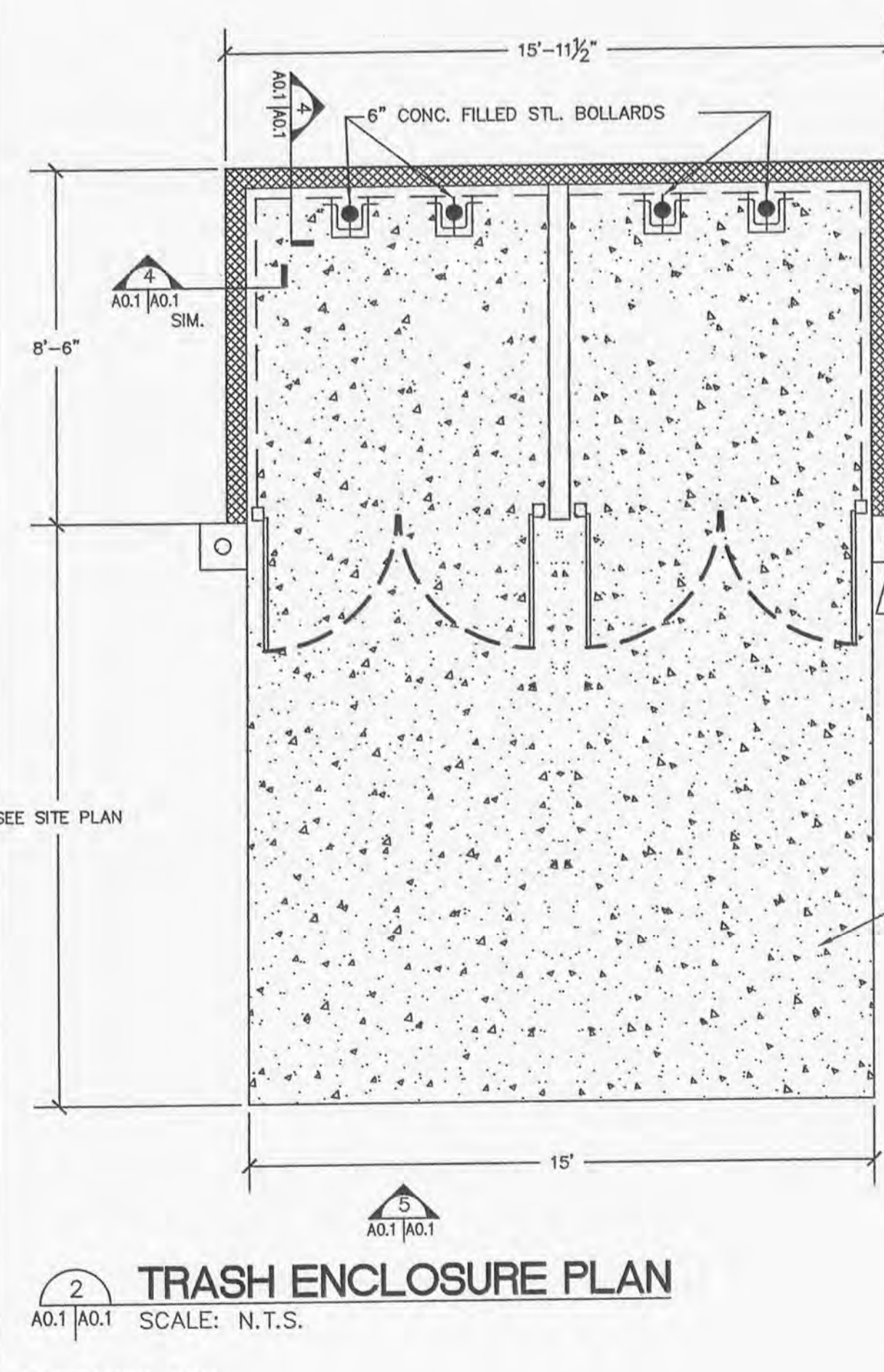
TYPICAL COMMERCIAL SERVICE CONNECTION WITH FIRE PROTECTION DETAIL 'H'
PUBLIC WATER SUPPLY DISTRICT #2 OF SAINT CHARLES COUNTY
APRIL 20, 2005



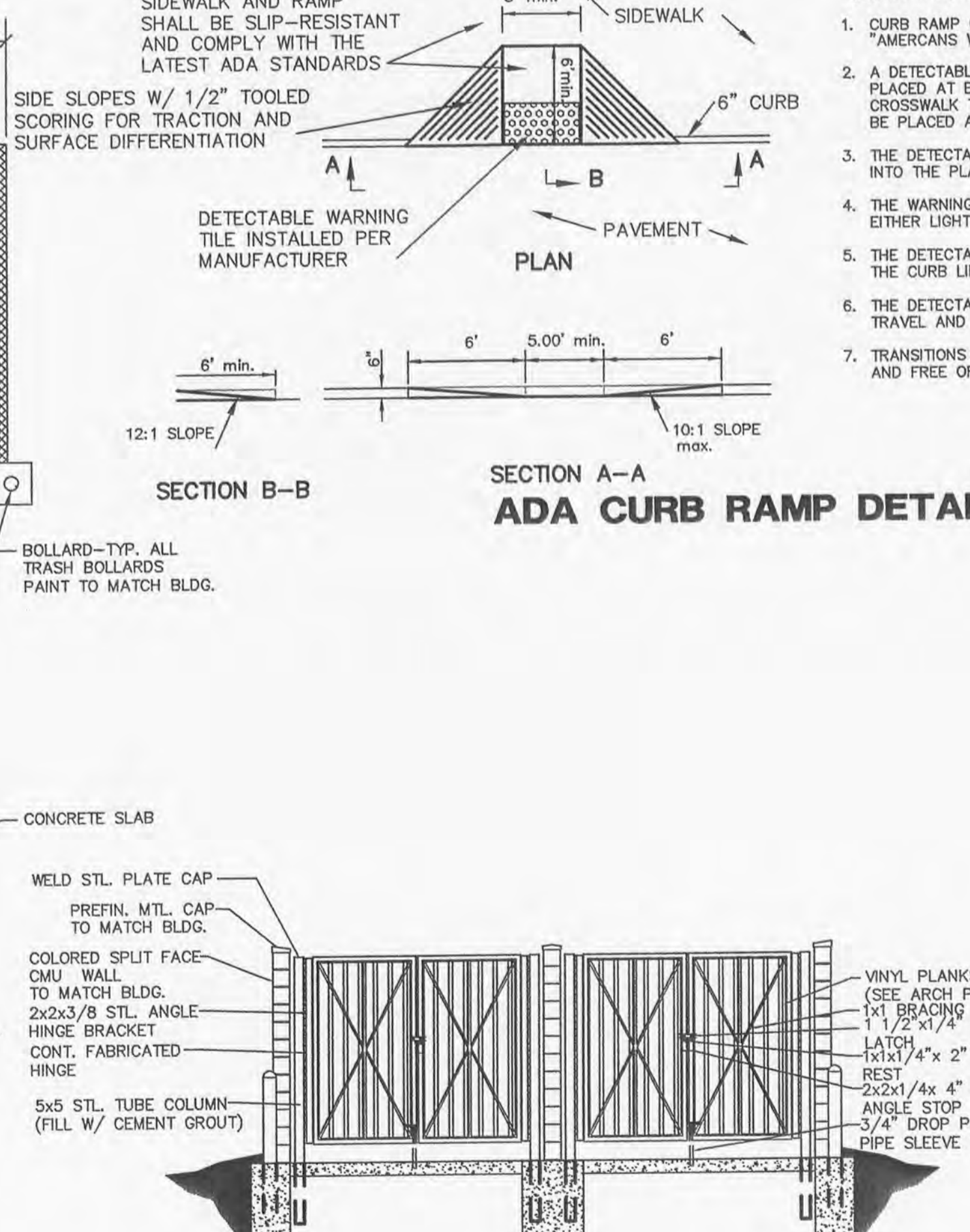
TYPICAL 1 1/2" & 2" WATER SERVICE DETAIL 'E'
PUBLIC WATER SUPPLY DISTRICT #2 OF SAINT CHARLES COUNTY
APRIL 20, 2005



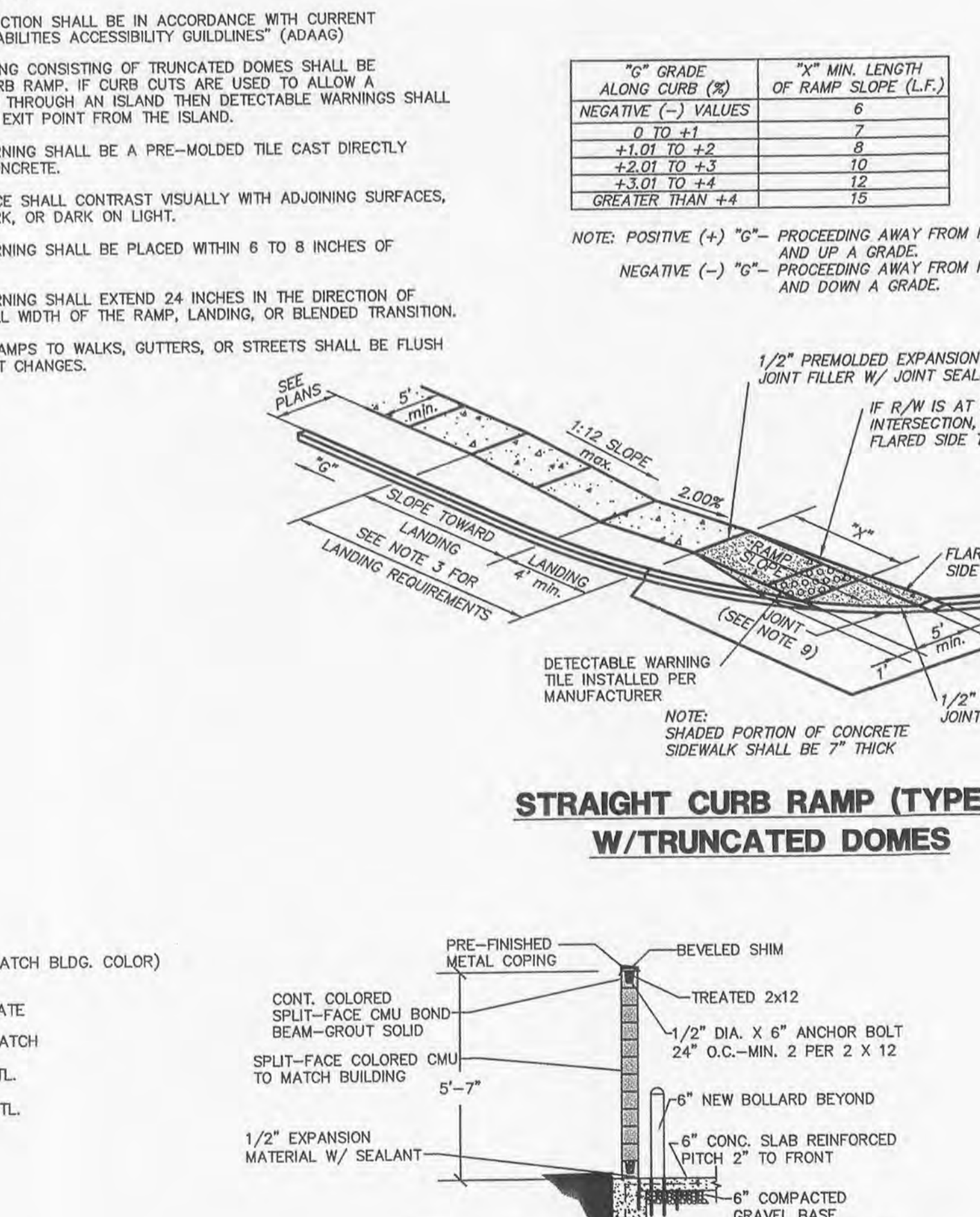
TYPICAL 1 1/2" OR 2" WATER SERVICE METER PIT DETAIL 'F'
PUBLIC WATER SUPPLY DISTRICT #2 OF SAINT CHARLES COUNTY
APRIL 20, 2005



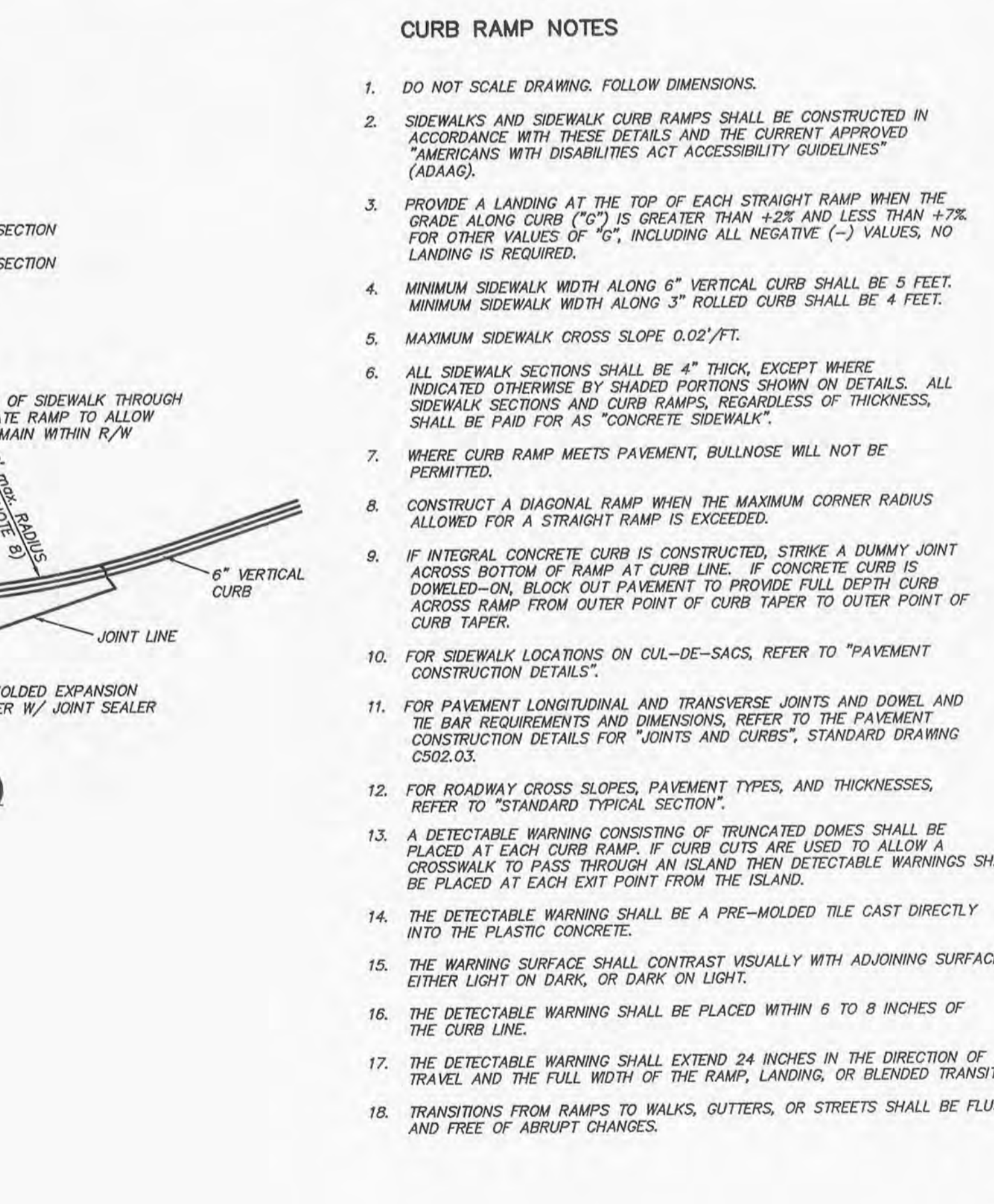
TRASH ENCLOSURE PLAN
SCALE: N.T.S.



ADA CURB RAMP DETAIL



STRAIGHT CURB RAMP (TYPE 2) W/TRUNCATED DOMES



TRASH ENCLOSURE GATE ELEVATION
SCALE: N.T.S.

CURB RAMP NOTES

1. CURB RAMP CONSTRUCTION SHALL BE IN ACCORDANCE WITH CURRENT "AMERICANS WITH DISABILITIES ACCESSIBILITY GUIDELINES" (ADAAG)
2. A DETECTABLE WARNING CONSISTING OF TRUNCATED DOMES SHALL BE PLACED AT EACH CURB RAMP. IF CURB CUTS ARE USED TO ALLOW A CROSSWALK TO PASS THROUGH AN ISLAND THEN DETECTABLE WARNINGS SHALL BE PLACED AT EACH EXIT POINT FROM THE ISLAND.
3. THE DETECTABLE WARNING SHALL BE A PRE-MOLDED TILE CAST DIRECTLY INTO THE PLASTIC CONCRETE.
4. THE WARNING SURFACE SHALL CONTRAST VISUALLY WITH ADJOINING SURFACES, EITHER LIGHT OR DARK, OR DARK ON LIGHT.
5. THE DETECTABLE WARNING SHALL BE PLACED WITHIN 6 TO 8 INCHES OF THE CURB LINE.
6. THE DETECTABLE WARNING SHALL EXTEND 24 INCHES IN THE DIRECTION OF TRAVEL AND THE FULL WIDTH OF THE RAMP, LANDING, OR BLENDED TRANSITION.
7. TRANSITIONS FROM RAMP TO WALKS, GUTTERS, OR STREETS SHALL BE FLUSH AND FREE OF ABRUPT CHANGES.

"G" GRADE ALONG CURB (%)	"X" MIN. LENGTH OF RAMP SLOPE (L.F.)
NEGATIVE (-) VALUES	6
0 TO +1	7
+1.01 TO +2	8
+2.01 TO +3	10
+3.01 TO +4	12
GREATER THAN +4	15

NOTE: POSITIVE (+) "G" - PROCEEDING AWAY FROM INTERSECTION AND UP A GRADE.
NEGATIVE (-) "G" - PROCEEDING AWAY FROM INTERSECTION AND DOWN A GRADE.

CURB RAMP NOTES

1. DO NOT SCALE DRAWING. FOLLOW DIMENSIONS.
2. SIDEWALKS AND SIDEWALK CURB RAMPS SHALL BE CONSTRUCTED IN ACCORDANCE WITH THESE DETAILS AND THE CURRENT APPROVED "AMERICANS WITH DISABILITIES ACT ACCESSIBILITY GUIDELINES" (ADAAG).
3. PROVIDE A LANDING AT THE TOP OF EACH STRAIGHT RAMP WHEN THE GRADE ALONG CURB ("G") IS GREATER THAN +2% AND LESS THAN +7%. FOR OTHER VALUES OF "G", INCLUDING ALL NEGATIVE (-) VALUES, NO LANDING IS REQUIRED.
4. MINIMUM SIDEWALK WIDTH ALONG 6" VERTICAL CURB SHALL BE 5 FEET. MINIMUM SIDEWALK WIDTH ALONG 3" ROLLED CURB SHALL BE 4 FEET.
5. MAXIMUM SIDEWALK CROSS SLOPE 0.02'/FT.
6. ALL SIDEWALK SECTIONS SHALL BE 4" THICK, EXCEPT WHERE INDICATED OTHERWISE BY SHADED PORTIONS SHOWN ON DETAILS. ALL SIDEWALK SECTIONS AND CURB RAMPS, REGARDLESS OF THICKNESS, SHALL BE PAID FOR AS "CONCRETE SIDEWALK".
7. WHERE CURB RAMP MEETS PAVEMENT, BULLNOSE WILL NOT BE PERMITTED.
8. CONSTRUCT A DIAGONAL RAMP WHEN THE MAXIMUM CORNER RADIUS ALLOWED FOR A STRAIGHT RAMP IS EXCEEDED.
9. IF INTEGRAL CONCRETE CURB IS CONSTRUCTED, STRIKE A DUMMY JOINT ACROSS BOTTOM OF RAMP AT CURB LINE. IF CONCRETE CURB IS DOWELED-ON, BLOCK OUT PAVEMENT TO PROVIDE FULL DEPTH CURB ACROSS RAMP FROM OUTER POINT OF CURB TAPER TO OUTER POINT OF CURB TAPER.
10. FOR SIDEWALK LOCATIONS ON CUL-DE-SACS, REFER TO "PAVEMENT CONSTRUCTION DETAILS".
11. FOR PAVEMENT LONGITUDINAL AND TRANSVERSE JOINTS AND DOWEL AND THE BAR REQUIREMENTS AND DIMENSIONS, REFER TO THE PAVEMENT CONSTRUCTION DETAILS FOR "JOINTS AND CURBS", STANDARD DRAWING C502.03.
12. FOR ROADWAY CROSS SLOPES, PAVEMENT TYPES, AND THICKNESSES, REFER TO "STANDARD TYPICAL SECTION".
13. A DETECTABLE WARNING CONSISTING OF TRUNCATED DOMES SHALL BE PLACED AT EACH CURB RAMP. IF CURB CUTS ARE USED TO ALLOW A CROSSWALK TO PASS THROUGH AN ISLAND THEN DETECTABLE WARNINGS SHALL BE PLACED AT EACH EXIT POINT FROM THE ISLAND.
14. THE DETECTABLE WARNING SHALL BE A PRE-MOLDED TILE CAST DIRECTLY INTO THE PLASTIC CONCRETE.
15. THE WARNING SURFACE SHALL CONTRAST VISUALLY WITH ADJOINING SURFACES, EITHER LIGHT OR DARK, OR DARK ON LIGHT.
16. THE DETECTABLE WARNING SHALL BE PLACED WITHIN 6 TO 8 INCHES OF THE CURB LINE.
17. THE DETECTABLE WARNING SHALL EXTEND 24 INCHES IN THE DIRECTION OF TRAVEL AND THE FULL WIDTH OF THE RAMP, LANDING, OR BLENDED TRANSITION.
18. TRANSITIONS FROM RAMP TO WALKS, GUTTERS, OR STREETS SHALL BE FLUSH AND FREE OF ABRUPT CHANGES.



J. R. GRIMES CONSULTING ENGINEERS, INC.
12300 OLD TESSON ROAD
ST. LOUIS, MO. 63128
PH. (314) 848-0100
FAX (314) 848-6010

REV. NO.	DATE	REMARKS
1	08-08-06	PER PHD/2 COMMENTS

IMPROVEMENT PLANS FOR PHOENIX WALK AT WHINGHAVEN

SITE DETAILS

JOB NUMBER:	1482A
DRAWN BY:	JSK
DATE:	05/17/06
CHECKED BY:	LJM
DATE:	05/17/06
SHEET:	

C8.0

P&Z APPROVAL ON DEC 1, 2005
CITY OF O'FALLON FILE 9831.54.02