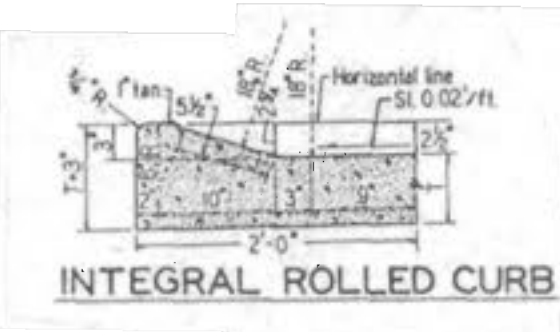
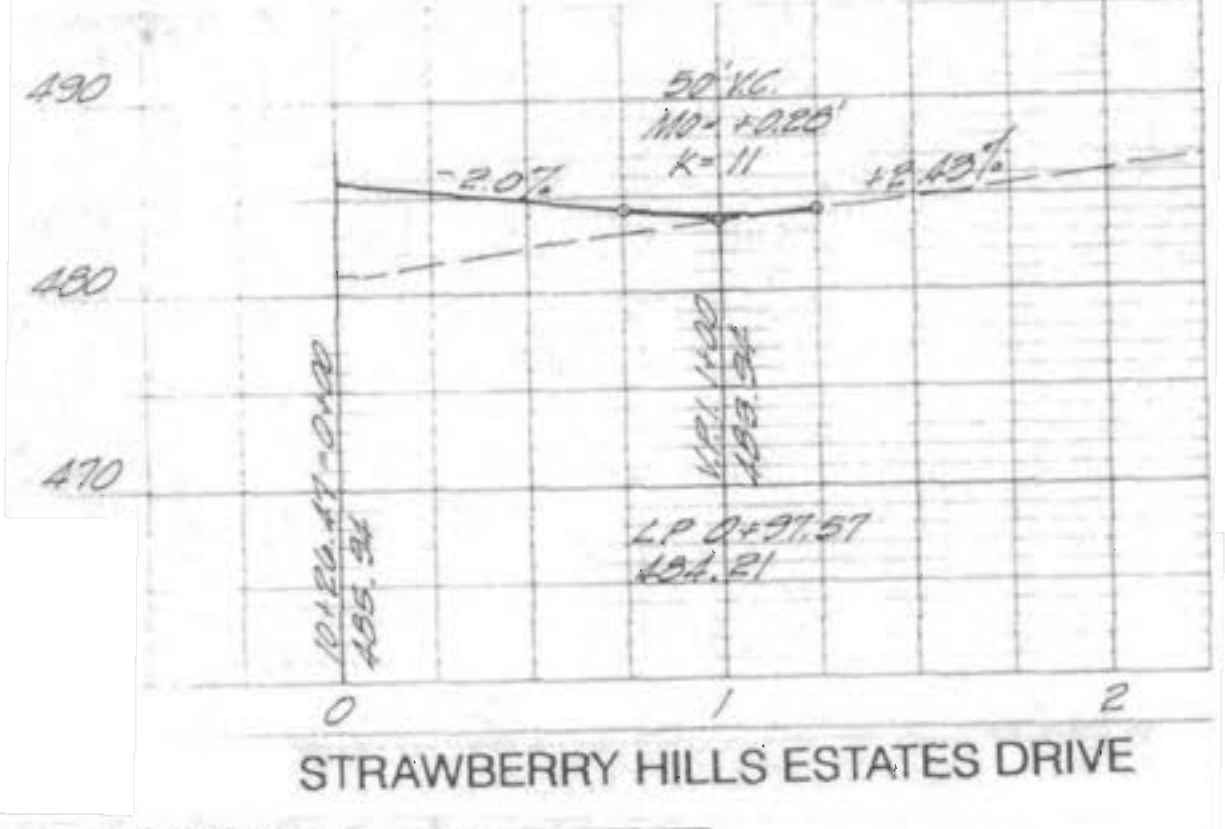
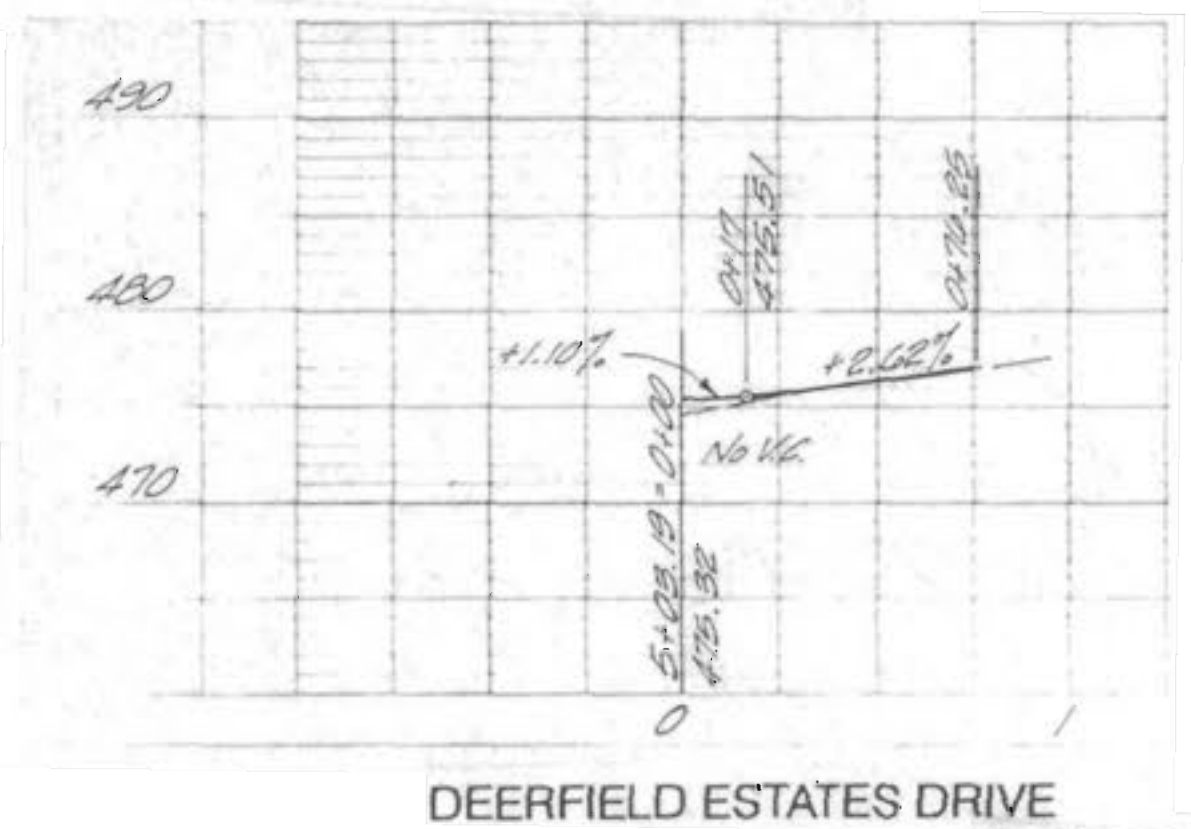
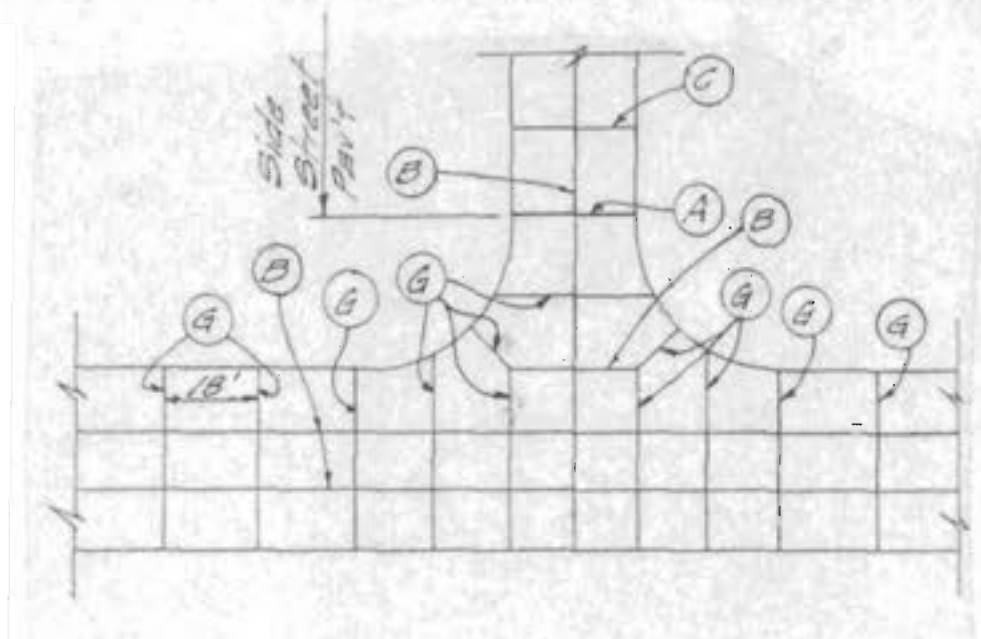
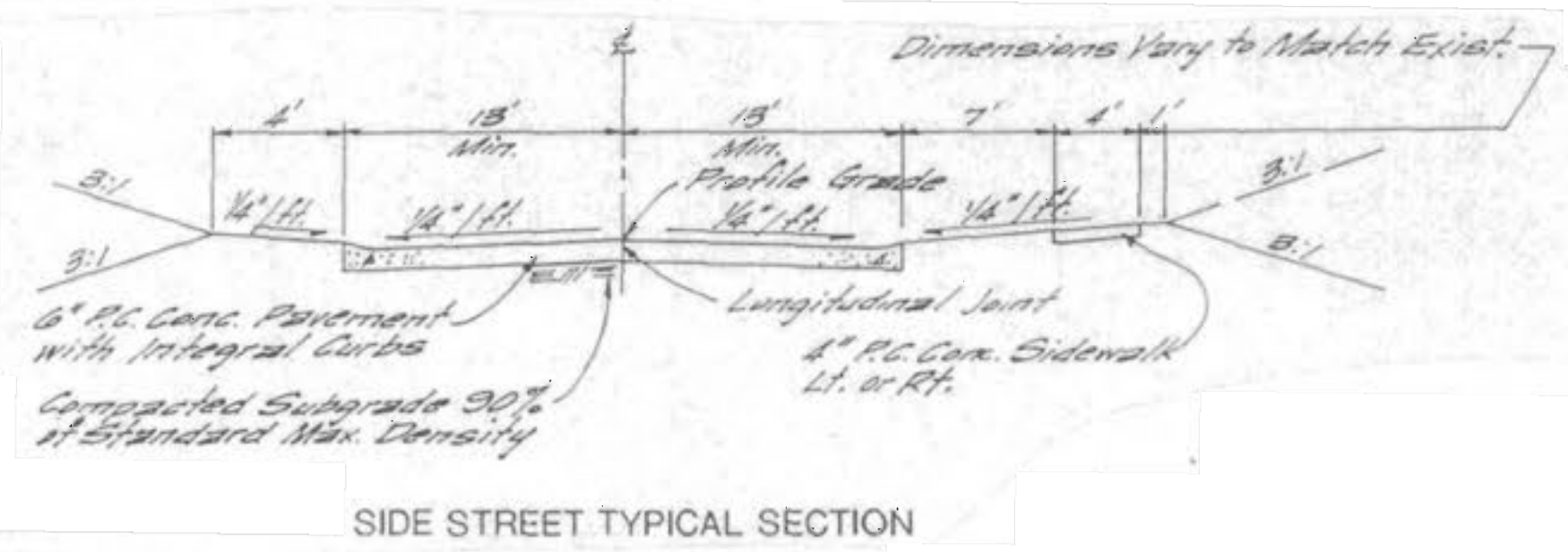
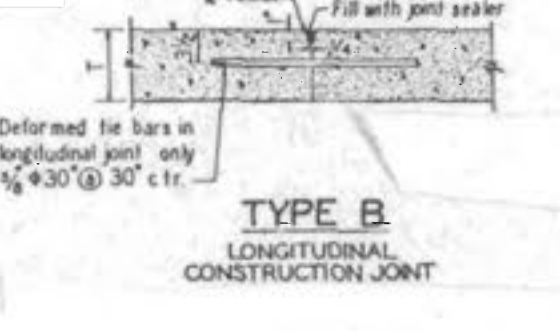
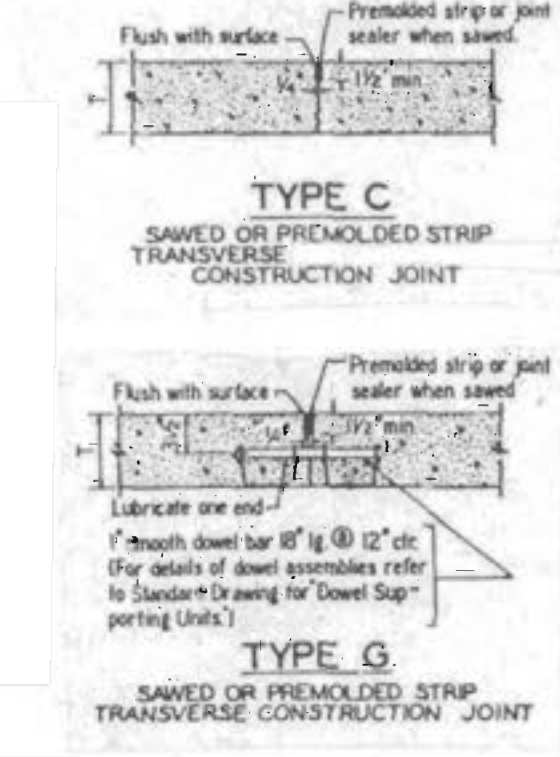
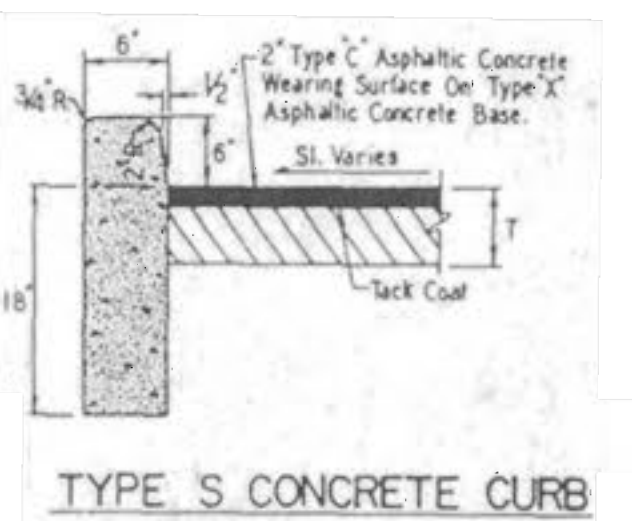
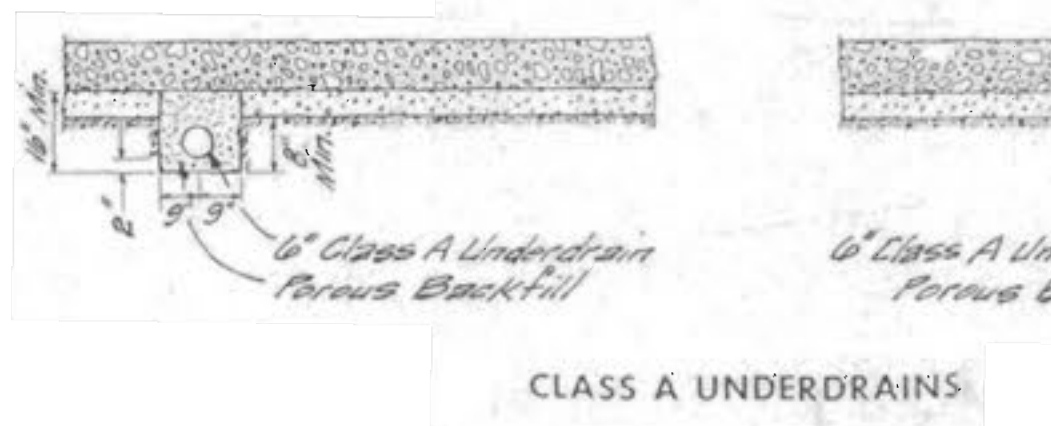
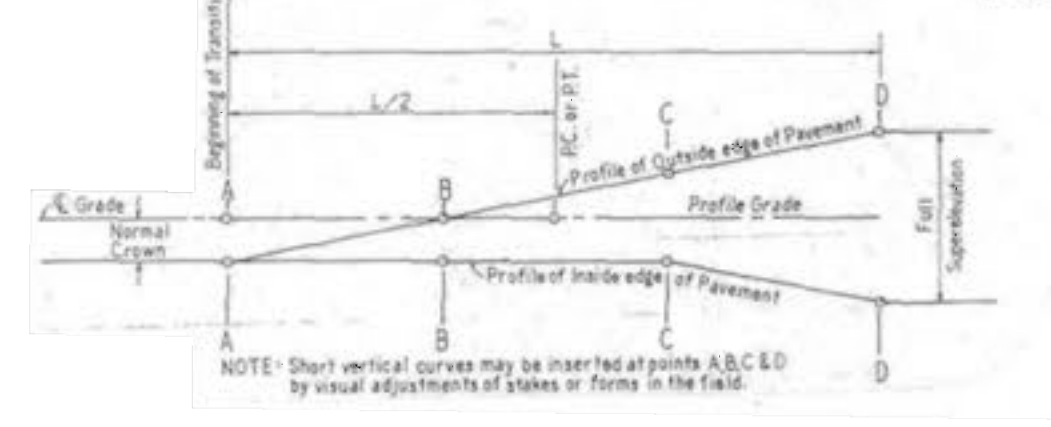
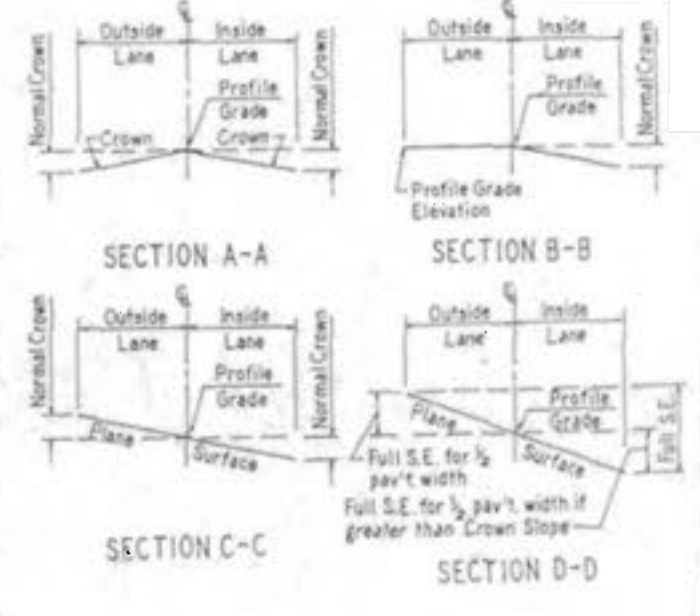


NOTE: 12 foot section back of curb can drain away from pavement if necessary to obtain more desirable slopes. (1/4" per ft.)

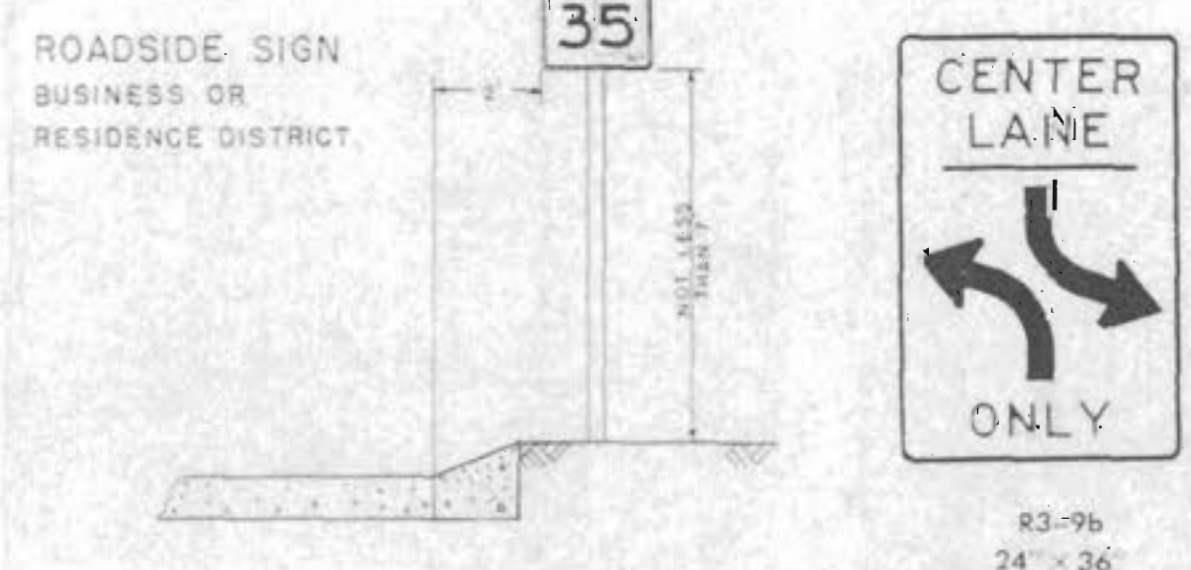
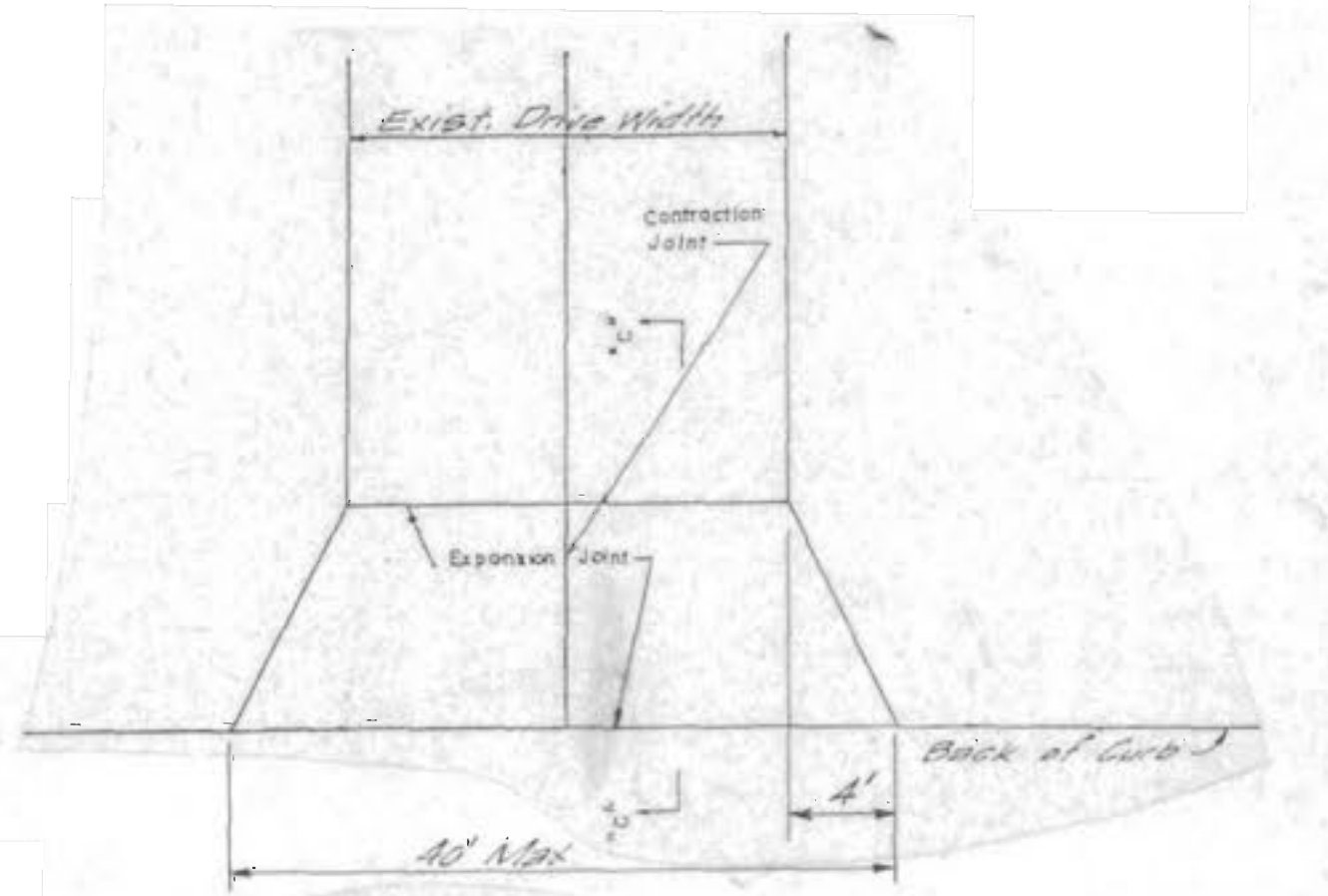


JOINT TYPE	JOINT AND BAR REQUIREMENTS	
Transverse	TYPE B / TYPE C on Side Streets	
Longitudinal	Within a poured section: TYPE B 5/8" deformed tie bars 30" lg. @ 30" center	At the edge between two poured sections: TYPE B 5/8" deformed tie bars 30" lg. @ 30" center

Design Speed (mph)	V=30M P.H. or Less				V=40 M.P.H.				V=50 M.P.H.			
	S.E.	L	L	L	S.E.	L	L	L	S.E.	L	L	L
0' 15"	22.818	NC	0	0	NC	0	0	0	NC	0	0	0
0' 30"	11.459	NC	0	0	NC	0	0	0	NC	0	0	0
0' 45"	7.639	NC	0	0	NC	0	0	0	NC	0	0	0
1' 00"	5.193	NC	0	0	NC	120	190	320	150	220	350	480
1' 15"	3.820	NC	100	150	0.270	120	190	320	150	220	350	480
1' 30"	2.865	NC	100	150	0.228	120	190	320	150	220	350	480
1' 45"	2.292	0.20	100	150	0.228	120	190	320	150	220	350	480
2' 00"	1.810	0.20	100	150	0.227	120	190	320	150	220	350	480
2' 15"	1.437	0.22	100	150	0.228	120	190	320	150	220	350	480
2' 30"	1.132	0.24	100	150	0.228	120	190	320	150	220	350	480
2' 45"	0.886	0.26	100	150	0.233	120	190	320	150	220	350	480
3' 00"	0.655	0.28	100	150	0.235	120	190	320	150	220	350	480
3' 15"	0.492	0.30	100	150	0.237	120	190	320	150	220	350	480
3' 30"	0.378	0.32	100	150	0.237	120	190	320	150	220	350	480
3' 45"	0.307	0.33	100	150	0.240	120	190	320	150	220	350	480
4' 00"	0.273	0.34	100	150	0.240	120	190	320	150	220	350	480
4' 15"	0.251	0.35	100	150	0.240	120	190	320	150	220	350	480
4' 30"	0.237	0.36	100	150	0.240	120	190	320	150	220	350	480
4' 45"	0.229	0.37	100	150	0.240	120	190	320	150	220	350	480
5' 00"	0.224	0.38	100	150	0.240	120	190	320	150	220	350	480
5' 15"	0.221	0.39	100	150	0.240	120	190	320	150	220	350	480
5' 30"	0.219	0.40	100	150	0.240	120	190	320	150	220	350	480
5' 45"	0.218	0.41	100	150	0.240	120	190	320	150	220	350	480
6' 00"	0.218	0.41	100	150	0.240	120	190	320	150	220	350	480



CONCRETE PAVEMENT DETAILS



DRIVEWAY DETAILS