

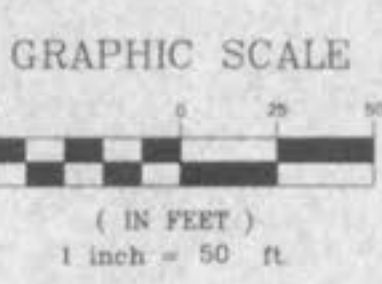
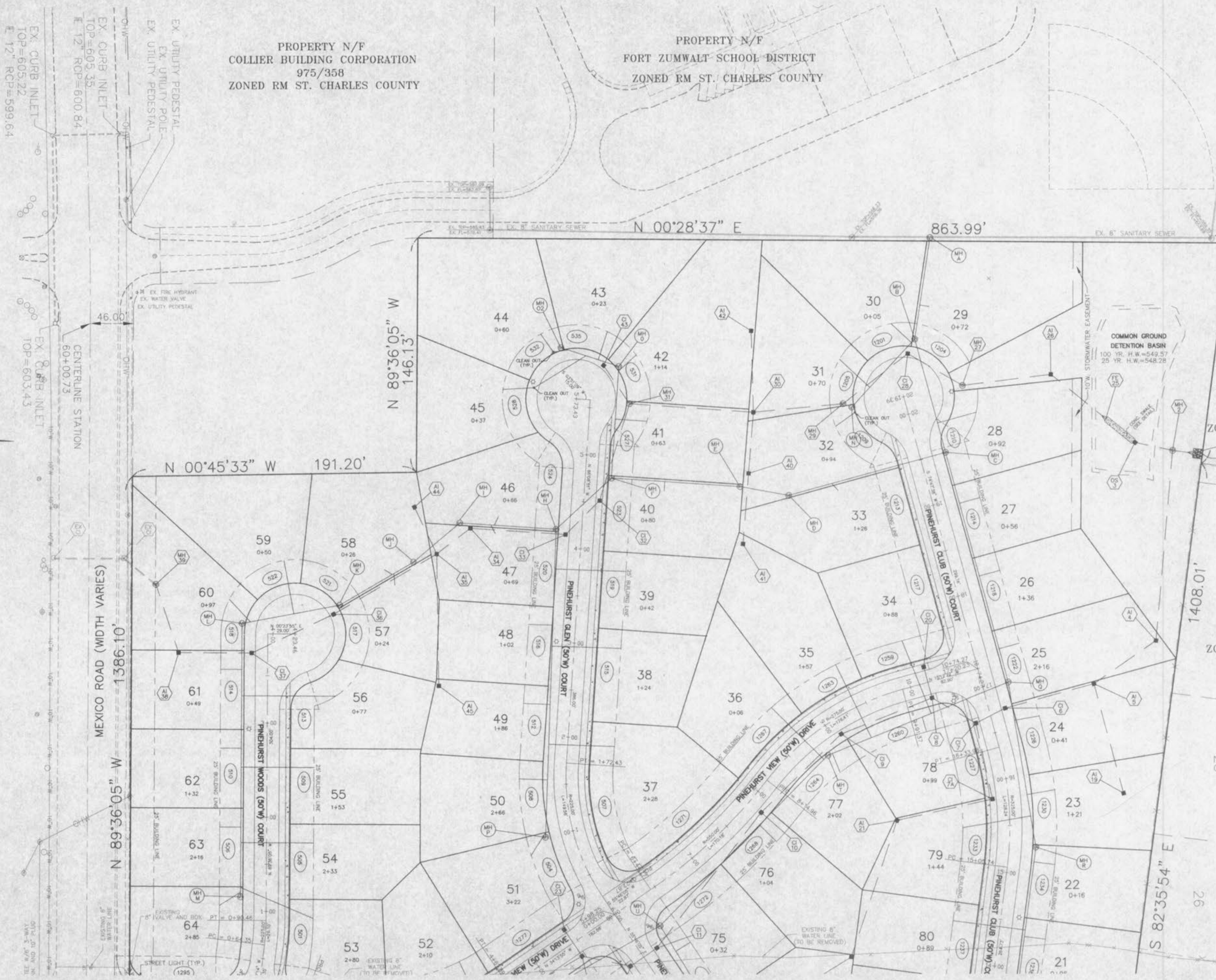
REV. 10-22-96
 REV. 11-1-96

PROPERTY N/F
 COLLIER BUILDING CORPORATION
 975/358
 ZONED RM ST. CHARLES COUNTY

PROPERTY N/F
 FORT ZUMWALT SCHOOL DISTRICT
 ZONED RM ST. CHARLES COUNTY

PROPERTY N/F
 GLEN EAGLE ASSOCIATES, L.L.C.
 PLAT BOOK 1677 PAGE 1120
 ZONED R-1B ST. CHARLES COUNTY

FORT ZUMWALT MEADOWS
 PLAT BOOK 6 PAGE 28
 ZONED R-1B ST. CHARLES COUNTY



C:\DWG\8115CON.dwg, Nov 14 09:25:39 1996, STATION 0